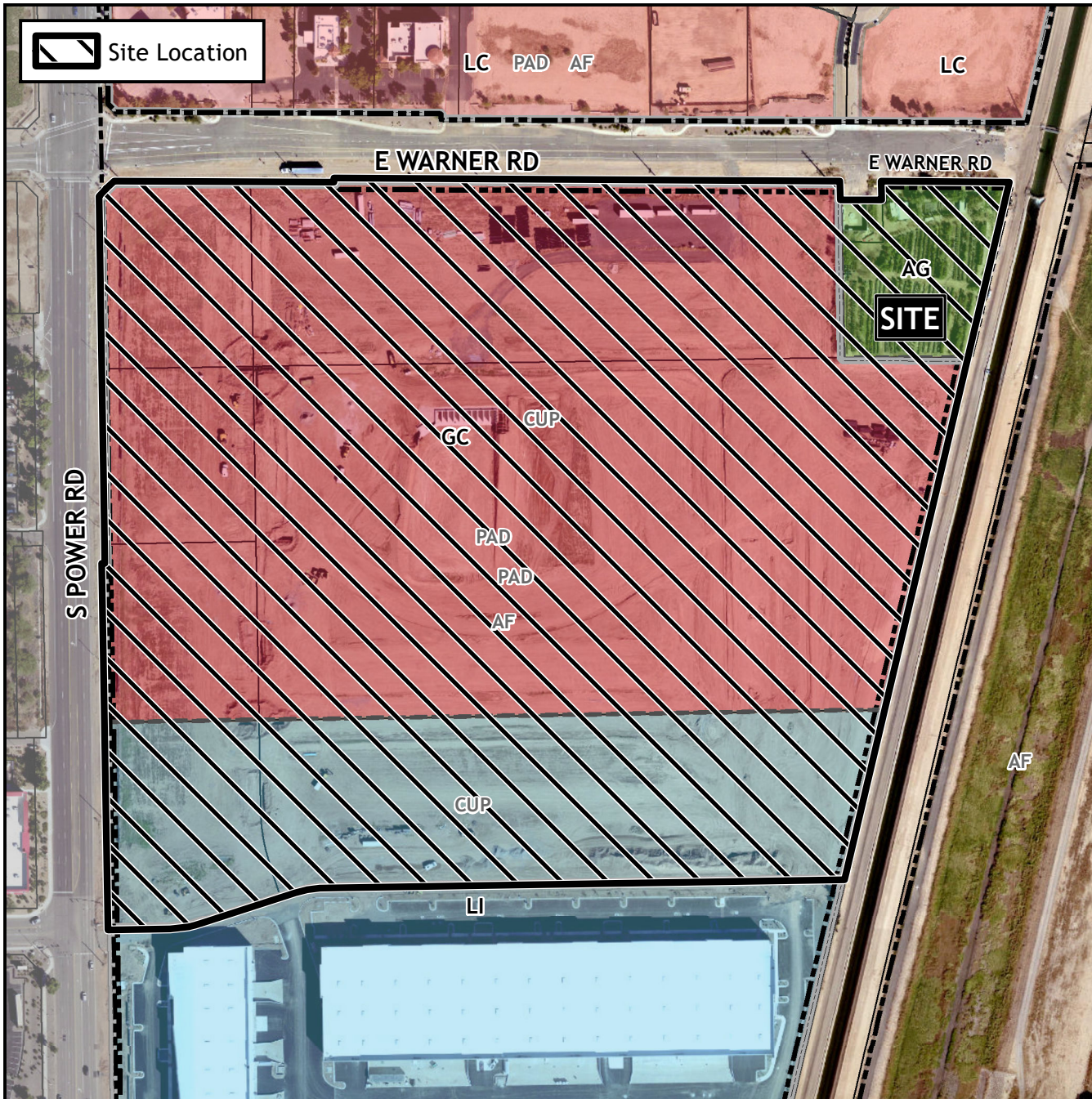


Planning and Zoning Vicinity Map: ZON22-01015



Case Details

CASE:

ZON22-01015

PRE-PLAT :

SITE / ADDRESS:

(District 6). Within the 4400 to 4600 blocks of South Power Road (east side) and within the 6800 to 7100 blocks of East Warner Road (south side). Located east of Power Road and south of Warner Road. (44± total acres).

REQUEST:

Rezone 1.6± acres from Agricultural (AG) to General Commercial with a Planned Area Development overlay (GC-PAD); modification of an existing Planned Area Development on the entire 44± acres and Site Plan Modification. This request will allow for a commercial development.

