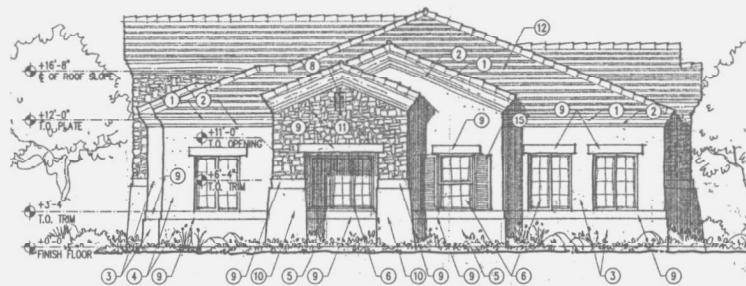


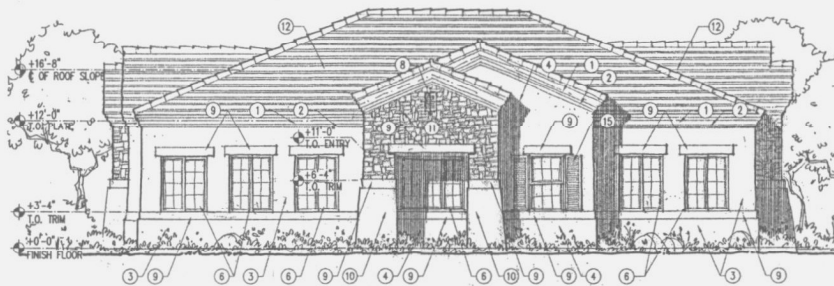
M1 FRONT ELEVATION  
3/16" = 1'-0"



F1 LEFT ELEVATION  
3/16" = 1'-0"



F11 REAR ELEVATION  
3/16" = 1'-0"



A1 REAR ELEVATION  
3/16" = 1'-0"

**KEYNOTES:**

- 1 EXTERIOR STUCCO SYSTEM OVER ROOF FORM FASCIA - PAINTED DUNN EDWARDS DE5266 "CRUSHED CASHEW"
- 2 EXTERIOR STUCCO SYSTEM TRIM - PAINTED DUNN EDWARDS DE6136 "TERACOTTA SAND"
- 3 EXTERIOR STUCCO SYSTEM - PAINTED DE5266 "CRUSHED CASHEW"
- 4 EXTERIOR STUCCO SYSTEM - PAINTED DUNN EDWARDS DE5298 "BUTTERSCOTCH SYRUP"
- 5 EXTERIOR STUCCO SYSTEM - PAINTED DUNN EDWARDS DE5502 "SERPENTINE"
- 6 PREFINISHED ALUMINUM WINDOW - KYNAR 500 FINISH TO MATCH DUNN EDWARDS DE4172 "CAMOFLAUGE"
- 7 METAL-CLAD WOOD DOORS - PAINTED DUNN EDWARDS DE4172 "CAMOFLAUGE"
- 8 PREFINISHED ALUMINUM GABLE VENT - KYNAR 500 FINISH TO MATCH DUNN EDWARDS DE4172 "CAMOFLAUGE"
- 9 EXTERIOR STUCCO SYSTEM TRIM - PAINTED DUNN EDWARDS DE5300 "BURMESE GOLD"
- 10 EXTERIOR STUCCO SYSTEM BASE - PAINTED DUNN EDWARDS DE4156 "CHERRY COLA"
- 11 CULTURED STONE VENEER SYSTEM - OWENS CORNING: OLD COUNTRY FIELDSTONE "RIVERA" (CSV-368117)
- 12 CONCRETE ROOF TILE - EAGLE: CAPSTRAND "SUNRISE BLEND" (#3645)
- 13 WALL MOUNTED LIGHT FIXTURE - SEE PHOTO/METRIC PLAN AND CUT SHEETS
- 14 CLEAR WINDOW & DOOR GLAZING
- 15 PREFINISHED ALUMINUM SHUTTERS - KYNAR 500 FINISH TO MATCH DUNN EDWARDS DE6132 "BIG STONE BEACH"

DISCLAIMER OF INSTRUMENTS OF SERVICE  
ALL REPORTS, PLANS, SPECIFICATIONS, CONTRACT PLANS, PERMITS, NOTES AND OTHER DOCUMENTS PREPARED BY DREAM CATCHERS PLANNING AND DESIGN LLC (DEDCAD) HEREBY REFERRED TO AS "INSTRUMENTS OF SERVICE" SHALL REMAIN THE PROPERTY OF THE ARCHITECT. THE ARCHITECT SHALL OBTAIN ALL COMMON LAW STATUTORY AND OTHER RIGHTS RESERVED, INCLUDING THE COPYRIGHT NOTICE, AND RETENTION OF TITLE BY THE ARCHITECT. EXPRESS NOTICE OF ASSIGNMENT FROM THE ARCHITECT IS FURNISHED, AND IS SUBJECT TO COMMON PROVISIONS. DREAM CATCHERS PLANNING AND DESIGN LLC, JANUARY 1, 2005

REVISIONS/SUBMISSIONS \_\_\_\_\_ DATE \_\_\_\_\_

**SOUTH GATE COMMERCE PARK**  
MESA, ARIZONA

**DREAM CATCHERS**  
PLANNING AND DESIGN LLC  
2454 E. SOUTHERN AVE., SUITE 110  
MESA, ARIZONA 85204  
4800-668-8011 S  
FAX 480-668-8032  
RANDOLPH LEE CARTER, ARCHITECT

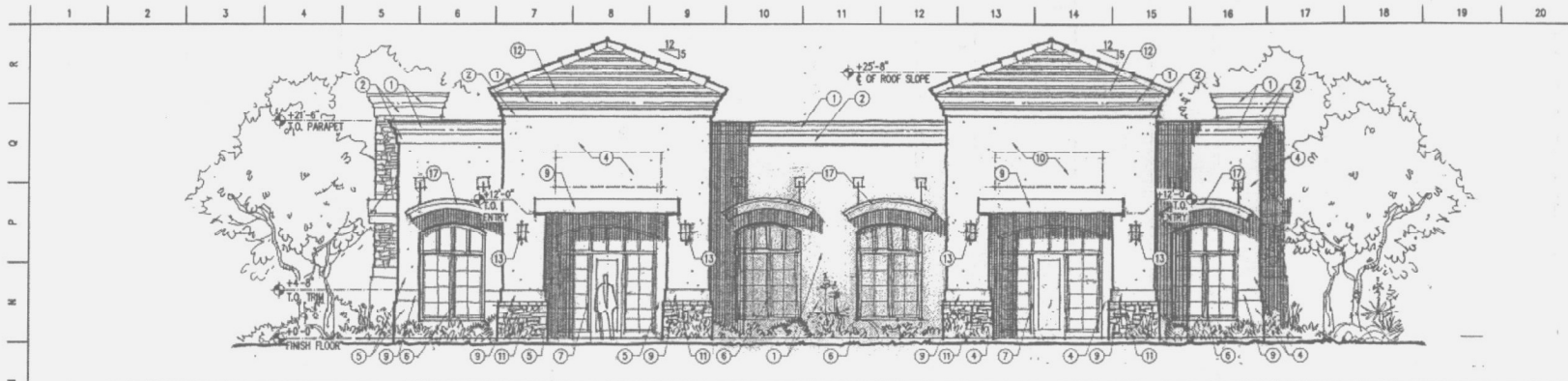
DRAWING TITLE:  
**BUILDING I - (BUILDING I SIMILAR)  
EXTERIOR ELEVATIONS**

DESIGNED BY: RLC PROJECT NO. 2005-15  
DRAWN BY: DED SCALE AS NOTED  
CHECKED BY: RLC DRAWING NO. **A201**  
DATE: 11 JUL 2005  
DRAW FILE: 2005-15 A201.dwg

APPROVED PLANS  
CITY COUNCIL

DATE: 9-19-05  
WITH STIPS: YES  NO

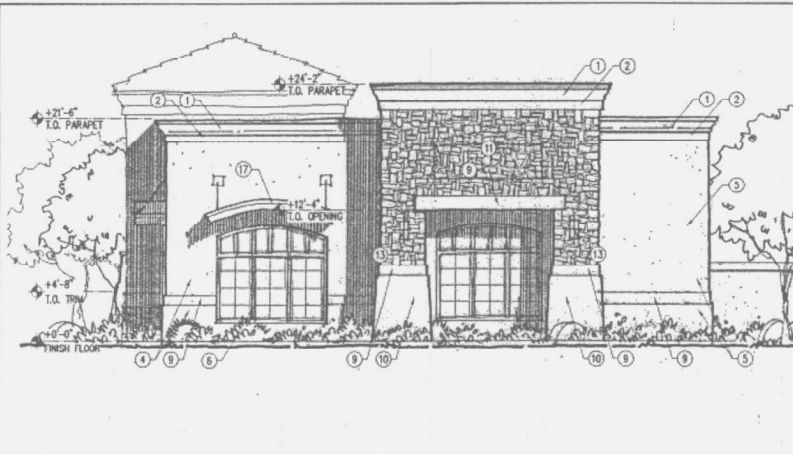
PROJECT NO. 2005-15  
SOUTH GATE COMMERCE PARK



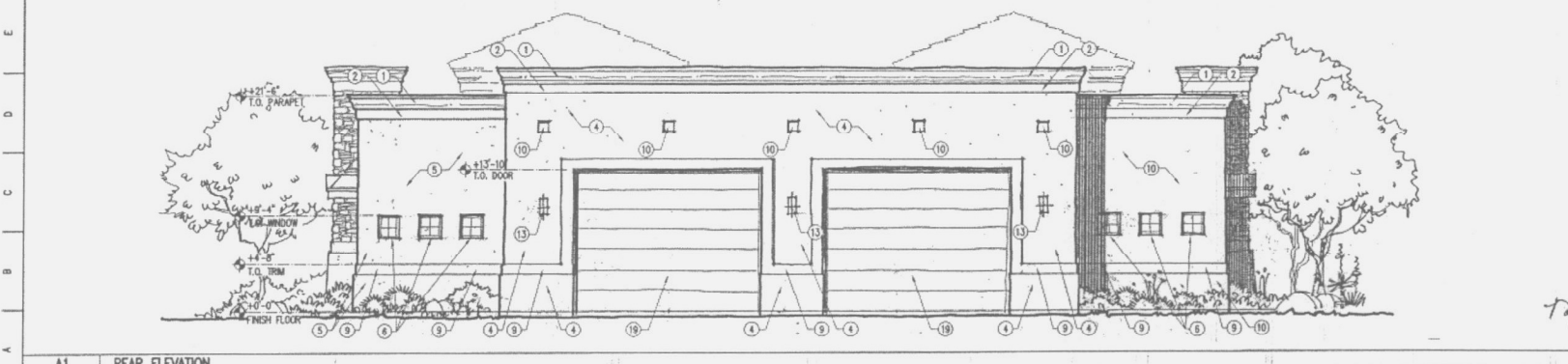
M1 FRONT ELEVATION  
3/16" = 1'-0"



F1 LEFT ELEVATION  
3/16" = 1'-0"



F11 RIGHT ELEVATION  
3/16" = 1'-0"



A1 REAR ELEVATION  
3/16" = 1'-0"

**KEYNOTES:**

- 1 EXTERIOR STUCCO SYSTEM OVER RIBBON FORM FASCIA - PAINTED DUNN EDWARDS DES288 "CRUSHED CASHEW"
- 2 EXTERIOR STUCCO SYSTEM TRIM - PAINTED DUNN EDWARDS DE8138 "TERACOTTA SAND"
- 3 EXTERIOR STUCCO SYSTEM - PAINTED DES288 "CRUSHED CASHEW"
- 4 EXTERIOR STUCCO SYSTEM - PAINTED DUNN EDWARDS DES298 "BUTTERSCOTCH STRIP"
- 5 EXTERIOR STUCCO SYSTEM - PAINTED DUNN EDWARDS DES502 "SERPENTINE"
- 6 PREFINISHED ALUMINUM WINDOW - KYNAR 500 FINISH TO MATCH DUNN EDWARDS DEAT72 "CAMOFLAUGE"
- 7 METAL-CLAD WOOD DOORS - PAINTED DUNN EDWARDS DEAT72 "CAMOFLAUGE"
- 8 PREFINISHED ALUMINUM GABLE VENT - KYNAR 500 FINISH TO MATCH DUNN EDWARDS DEAT72 "CAMOFLAUGE"
- 9 EXTERIOR STUCCO SYSTEM TRIM - PAINTED DUNN EDWARDS DES300 "BURMESE GOLD"
- 10 EXTERIOR STUCCO SYSTEM BASE - PAINTED DUNN EDWARDS DEA158 "CHERRY COLA"
- 11 CULTURED STONE VENEER SYSTEM - OWENS CORNING: OLD COUNTRY FIELDSTONE "RIVERA" (CSV-368117)
- 12 CONCRETE ROOF TILE - ENGLE: CAPSTRANO "SUNRISE BLEND" (#3645)
- 13 WALL MOUNTED LIGHT FIXTURE - SEE PHOTO-METRIC PLAN AND CUT SHEETS
- 14 CLEAR WINDOW & DOOR GLAZING
- 15 PREFINISHED ALUMINUM SHUTTERS - KYNAR 500 FINISH TO MATCH DUNN EDWARDS DE6132 "BIG STONE BEACH"
- 16 ATTACHED SIGNAGE LOCATION
- 17 PREFINISHED METAL AWNING - KYNAR 500 FINISH TO MATCH DUNN EDWARDS DES300 "BURMESE GOLD" OR DEAT72 "CAMOFLAUGE"
- 18 EXTERIOR STUCCO SYSTEM - PAINTED DUNN EDWARDS DE6136 "TERACOTTA SAND"
- 19 ROLL-UP STEEL DOOR - PAINTED DUNN EDWARDS DEAT72 "CAMOFLAUGE"

**DIMENSION OF INSTRUMENTS OF SERVICE**  
 ALL HEIGHTS, PLANS, DISTANCES, CORNER PLACES, ROAD MARKS, METERS AND OTHER DIMENSIONS AND INFORMATION PROVIDED BY THESE LOCATED PLANNERS AND ENGINEERS IS CORRECTED ACCORDING TO AN "INSTRUMENT" OF SERVICE WHICH SHALL BE THE PROPERTY OF THE ARCHITECT, AND SHALL NOT BE USED FOR ANY OTHER PROJECT WITHOUT THE WRITTEN CONSENT OF THE ARCHITECT. THE ARCHITECT SHALL BE RESPONSIBLE FOR ALL DIMENSIONS AND OTHER INFORMATION PROVIDED HEREON. NO CONTRACT SHALL BE ENTERED INTO OR REVISED UNLESS THE ARCHITECT HAS REVIEWED AND APPROVED THE SAME. THESE INSTRUMENTS OF SERVICE ARE THE PROPERTY OF THE ARCHITECT AND SHALL BE RETURNED TO THE ARCHITECT UPON COMPLETION OF THE PROJECT.

NO. \_\_\_\_\_ DATE \_\_\_\_\_

**SOUTH GATE COMMERCE PARK**  
 MESA, ARIZONA

**DREAM CATCHERS**  
 PLANNING AND DESIGN LLC  
 2454 E. SOUTHERN AVE., SUITE 110  
 MESA, ARIZONA 85204  
 480-668-8015  
 FAX 480-668-8052  
 www.dreamcatcherplanning.com

DRAWING TITLE:  
**BUILDING III - EXTERIOR ELEVATIONS**

DESIGNED BY: RLC PROJECT NO.: 2005-15  
 DRAWN BY: DED SCALE: AS NOTED  
 CHECKED BY: RLC  
 DATE: 11 JUL 2005  
 DWS FILE: 2005-15 A204.dwg

**A204**

APPROVED PLANS  
 CITY COUNCIL

DATE: 9-19-05  
 WITH STIPS: YES  NO

PROJECT NO. 2005-15  
 SOUTH GATE COMMERCE PARK