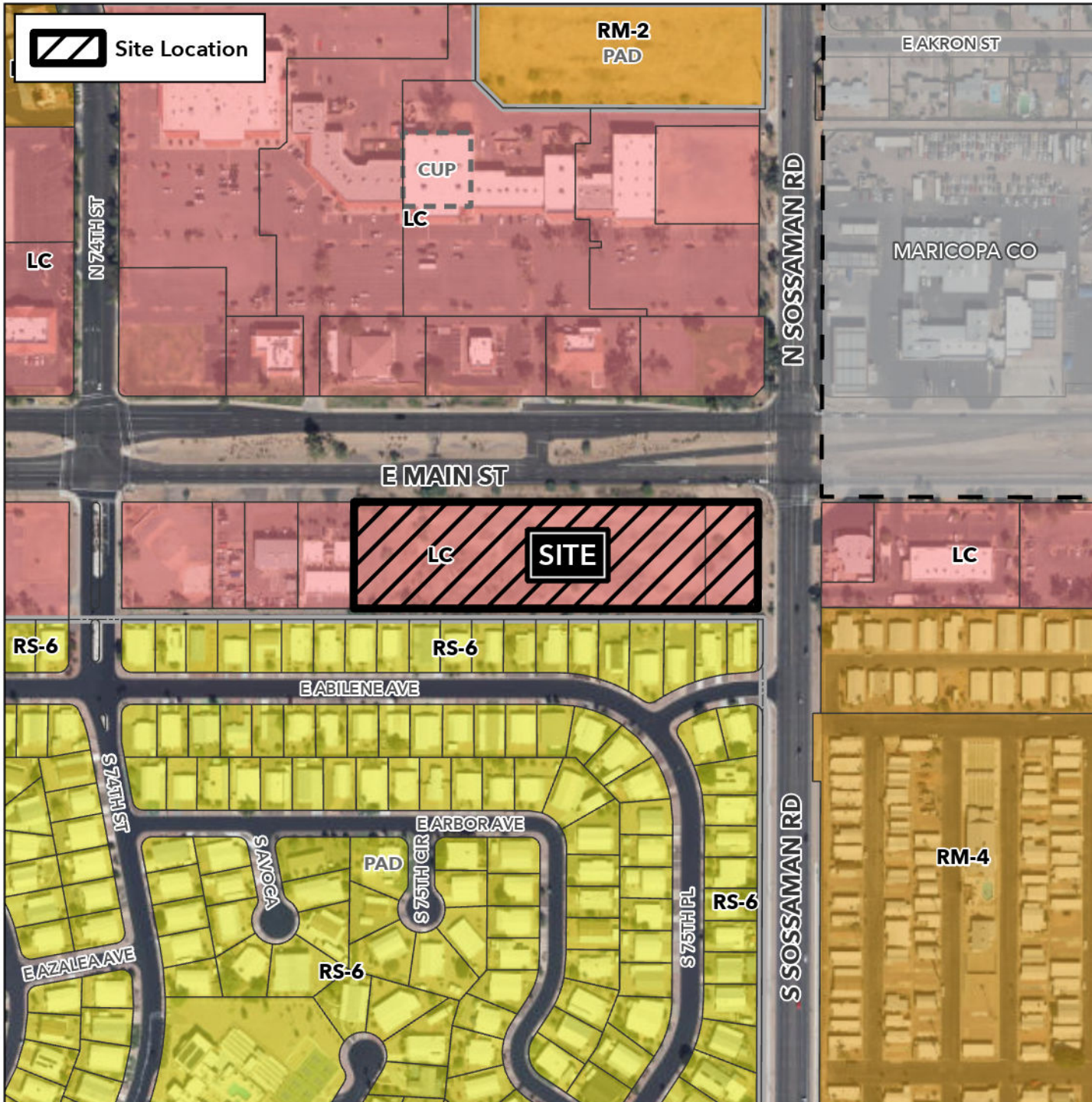


# Planning and Zoning Vicinity Map: ZON24-01020

## Case Details



Site Location



### Case:

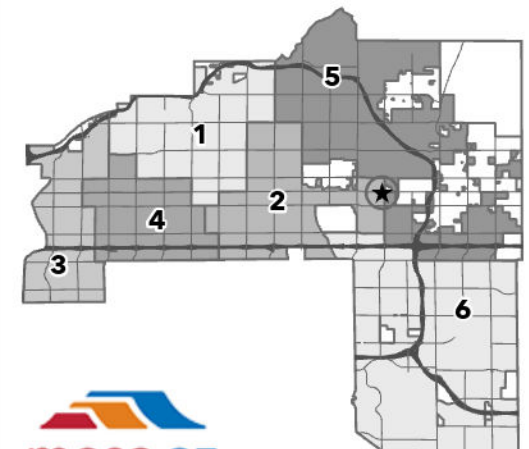
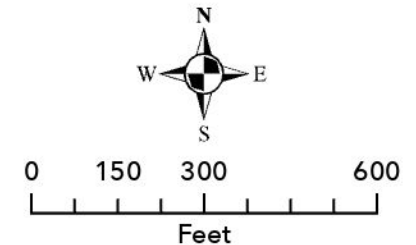
ZON24-01020

### Site / Address:

(District 2). 3.5± acres located at southwest corner of South Sossaman Road and East Main Street.

### Request:

Rezone from Limited Commercial (LC) to Multiple Residence-2 with a Planned Area Development Overlay (RM-2-PAD) and Site Plan Review for a 45-unit multiple residence development.



mesa·az