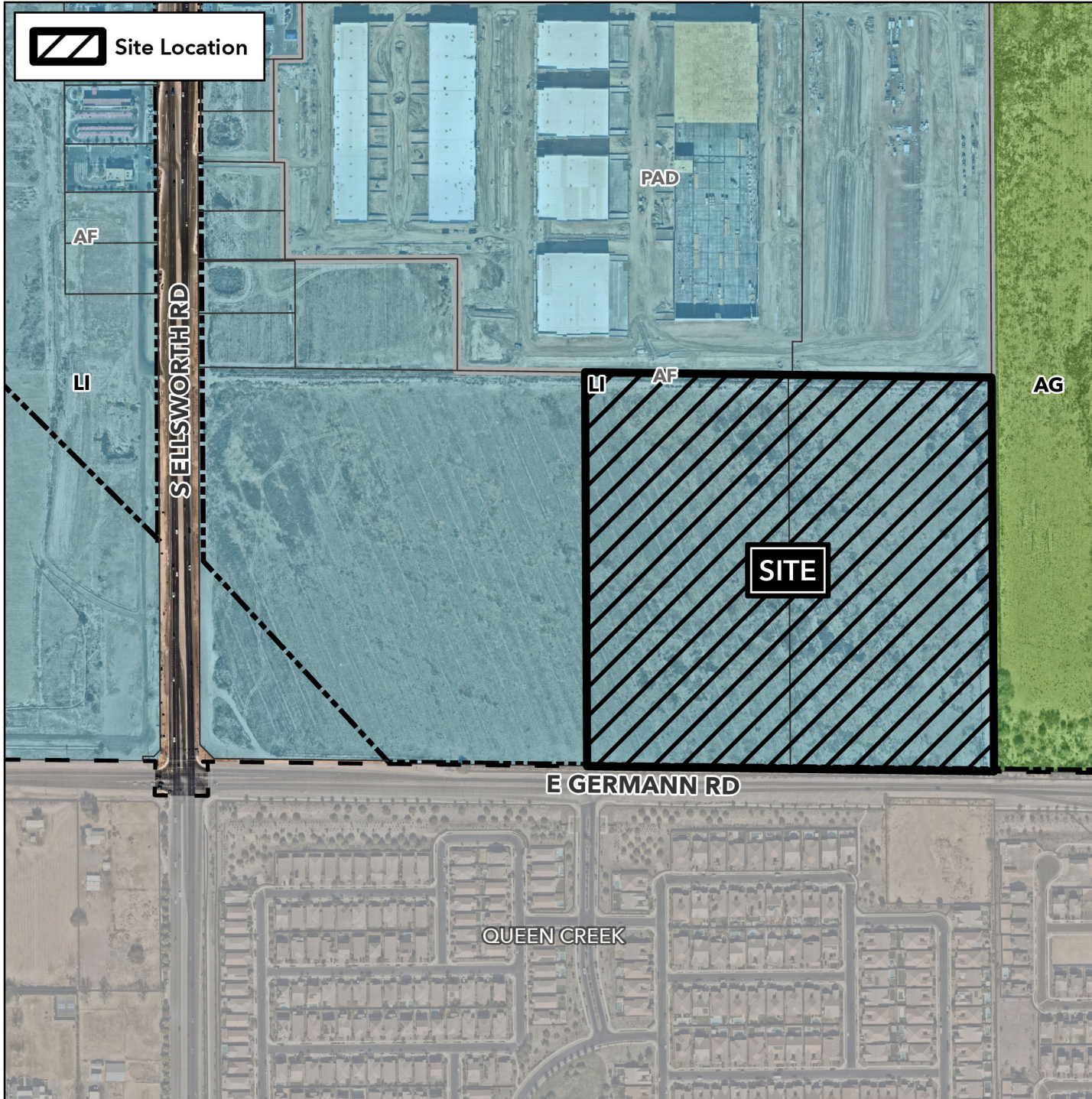


# Planning and Zoning Vicinity Map: ZON25-00529

## Case Details



Site Location



### Case:

ZON25-00529

### Site / Address:

(District 6). 38.8± acres located approximately 1,300± feet east of the northeast corner of South Ellsworth Road and East Germann Road.

### Request:

Site Plan Review for an approximately 663,992± square foot industrial park.

