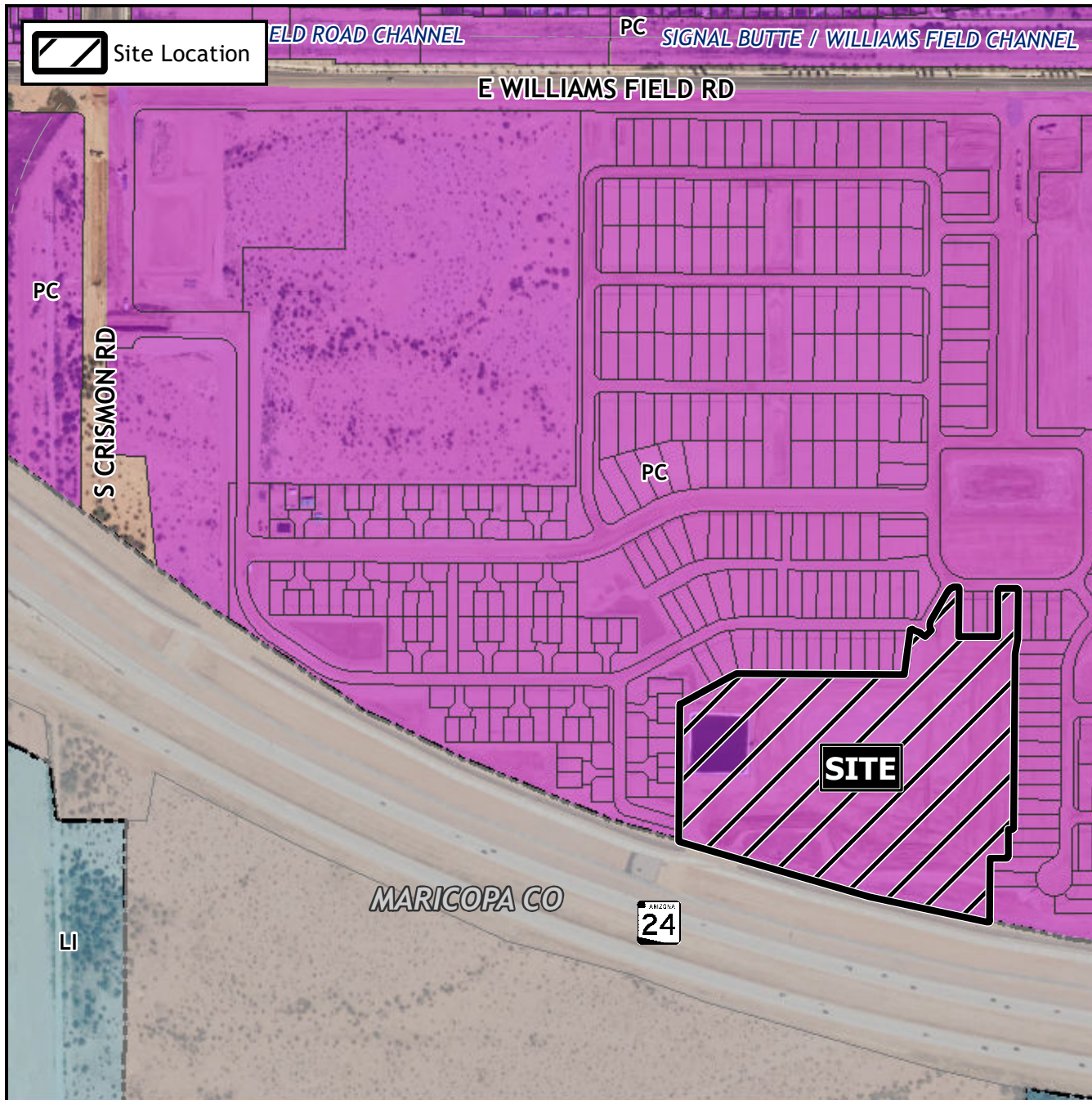


Final Plat Vicinity Map



Case Details

Project:

Fusion at Avalon Crossing Replat
SUB22-01184

Site/Address:

(District 6). Within the 10100 to 10600 blocks of East Williams Field Road (south side) and within the 6000 to 6400 block of South 222nd Street (west side). Located east of Crismon Road on the south side of Williams Field Road. (12.7± acres).

Description:

Shea Homes Limited Partnership,
Developer;
CVL Consultants, Surveyor.

