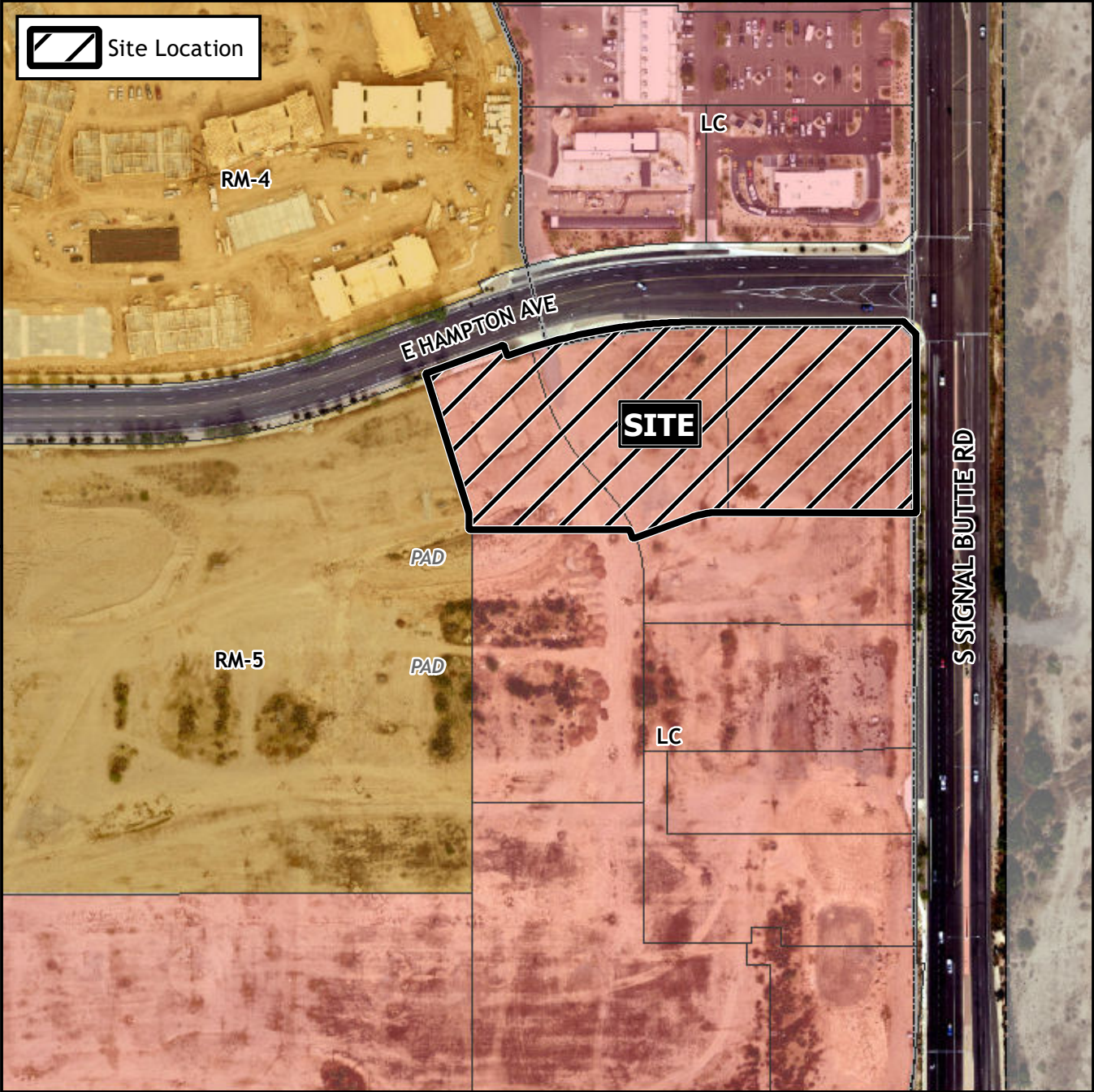


Final Plat Vicinity Map



Case Details

Project:

Mountain Vista Retail Lots 6 & 7 Replat
SUB22-00205

Site/Address:

District 5. Within the 10700 block of East Hampton Avenue (south side) and within the 1400 block of South Signal Butte Road (west side). Located south of Southern Avenue and north of the US 60 Superstition Freeway. (3.5± acres).

Description:

Justin Richard, Beck Consulting Engineers LLC., surveyor; Thompson Thrift Development Inc., developer.

