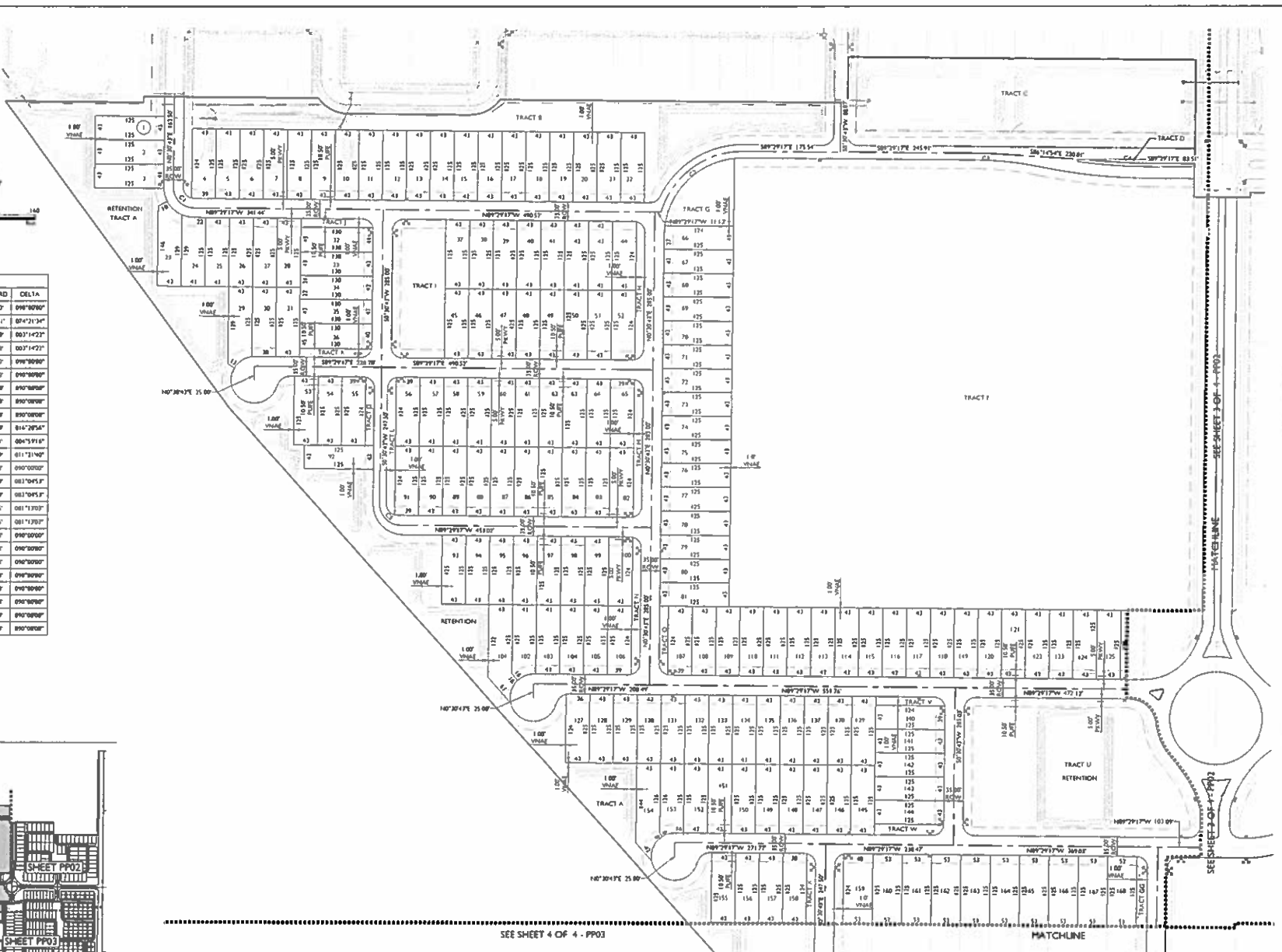
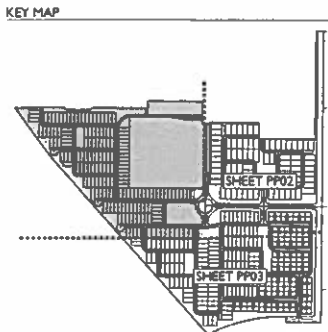


CURVE TABLE				
CURVE	LENGTH	RADIUS	CHORD	DELTA
C1	58.90'	37.50'	53.07'	090°00'00"
C2	197.27'	153.00'	183.71'	074°21'34"
C3	34.80'	612.00'	34.48'	007°14'22"
C4	56.20'	994.00'	56.20'	007°14'22"
C5	58.90'	37.50'	53.07'	090°00'00"
C6	58.90'	37.50'	53.07'	090°00'00"
C7	54.90'	35.00'	49.58'	090°00'00"
C8	58.90'	37.50'	53.07'	090°00'00"
C9	58.90'	37.50'	53.07'	090°00'00"
C10	57.02'	208.00'	56.88'	014°20'54"
C11	17.41'	308.00'	17.41'	004°59'16"
C12	39.66'	2000.00'	39.59'	011°31'40"
C13	58.90'	37.50'	53.07'	090°00'00"
C14	26.89'	580.00'	26.89'	003°04'51"
C15	26.89'	580.00'	26.89'	003°04'51"
C16	29.75'	1008.00'	29.75'	001°13'02"
C17	29.75'	1008.00'	29.75'	001°13'02"
C18	58.90'	37.50'	53.07'	090°00'00"
C19	58.90'	37.50'	53.07'	090°00'00"
C20	58.90'	37.50'	53.07'	090°00'00"
C21	58.90'	37.50'	53.07'	090°00'00"
C22	58.90'	37.50'	53.07'	090°00'00"
C23	58.90'	37.50'	53.07'	090°00'00"
C24	58.90'	37.50'	53.07'	090°00'00"
C25	58.90'	37.50'	53.07'	090°00'00"



SEE SHEET 4 OF 4 - PP03

MATCHLINE

SEE SHEET 3 OF 4 - PP03



CADENCE AT GATEWAY
PHASE 2 & 3 - DU2
PRELIMINARY PLAT - DU2

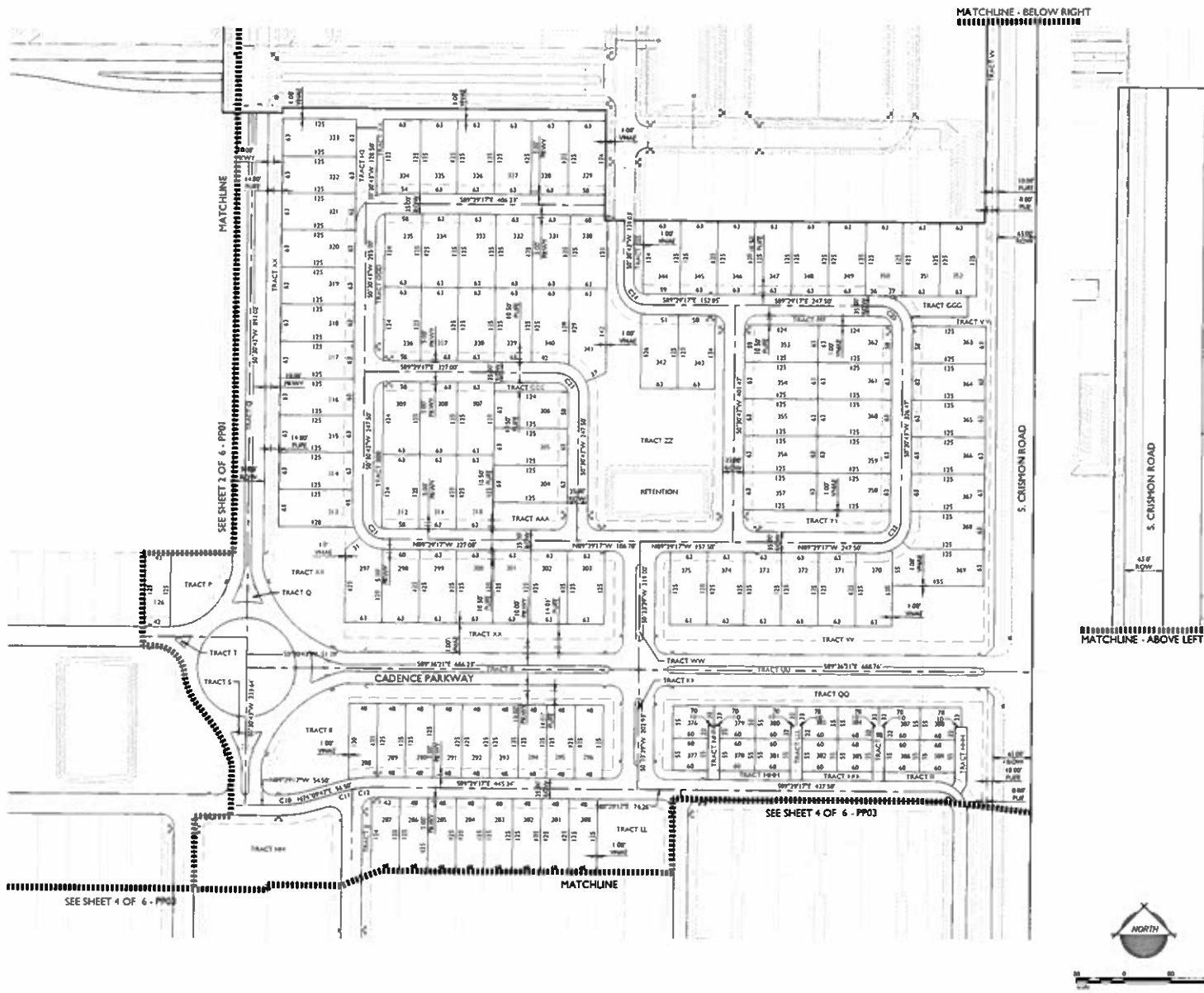
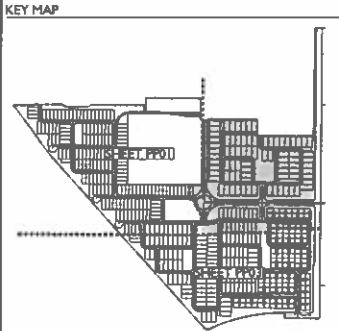
DATE: 10/13/18	BY: [Signature]
SCALE: 1"=200'	REVISION: [Signature]
PROJECT: [Signature]	DESIGNER: [Signature]
CHECKED: [Signature]	DATE: [Signature]



18-106
PP01
Sheet No
2
of 6

1865 S. Woodport Ave, Suite 101
Mesa, AZ 85209
T: 480-933-2550 F: 480-933-2758
www.epsengineering.com

CURVE TABLE			
CURVE	LENGTH	RADIUS	CHORD DELTA
C1	58.90'	37.50'	53.87' 090°00'00"
C2	197.27'	153.80'	183.74' 024°12'34"
C3	39.60'	413.00'	39.60' 081°14'31"
C4	58.30'	394.00'	58.20' 081°14'31"
C5	58.90'	37.50'	53.87' 090°00'00"
C6	58.90'	37.50'	53.87' 090°00'00"
C7	54.90'	35.80'	49.58' 090°00'00"
C8	58.90'	37.50'	53.87' 090°00'00"
C9	58.90'	37.50'	53.87' 090°00'00"
C10	57.87'	308.00'	56.80' 046°39'54"
C11	17.41'	308.00'	17.41' 004°59'16"
C12	39.60'	308.00'	39.59' 041°51'40"
C13	58.90'	37.50'	53.87' 090°00'00"
C14	36.89'	508.00'	36.89' 003°04'51"
C15	36.89'	508.00'	36.89' 003°04'51"
C16	29.75'	1400.00'	29.75' 001°11'30.2"
C17	29.75'	1400.00'	29.75' 001°11'30.2"
C18	58.90'	37.50'	53.87' 090°00'00"
C19	58.90'	37.50'	53.87' 090°00'00"
C20	58.90'	37.50'	53.87' 090°00'00"
C21	58.90'	37.50'	53.87' 090°00'00"
C22	58.90'	37.50'	53.87' 090°00'00"
C23	58.90'	37.50'	53.87' 090°00'00"
C24	58.90'	37.50'	53.87' 090°00'00"
C25	58.90'	37.50'	53.87' 090°00'00"



2043 S. University Ave., Suite 101
 Mesa, AZ 85210
 480.943.2210
 www.epsgroup.com

EPS GROUP

**CADENCE AT GATEWAY
 PHASE 2 & 3 - DU2**
 PDA 02

PRELIMINARY PLAT - DU2

Project: _____
 Revision: _____

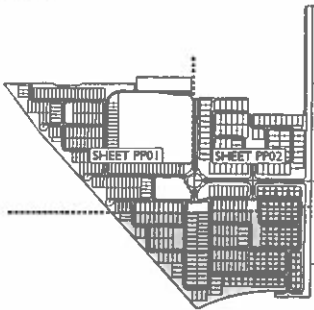
DATE: 2018-11-15 PREPARED BY: JACOB BERTAL
 DATE: 2018-11-20 DRAWN BY: JACOB BERTAL
 DATE: 2018-11-20 CHECKED BY: JACOB BERTAL

Engineer: _____
 Designer: _____

18-106
 PP02
 Sheet No.
 3
 of 6

CURVE	LENGTH	RADIUS	CHORD	DELTA
C1	58.90'	37.50'	53.03'	89°00'00"
C2	197.37'	152.00'	181.71'	60°41'13"
C3	34.68'	612.00'	34.60'	80°11'43"
C4	54.38'	994.00'	54.38'	80°11'43"
C5	58.90'	37.50'	53.03'	89°00'00"
C6	58.90'	37.50'	53.03'	89°00'00"
C7	54.90'	35.80'	49.50'	89°00'00"
C8	58.90'	37.50'	53.03'	89°00'00"
C9	58.90'	37.50'	53.03'	89°00'00"
C10	57.00'	200.80'	54.80'	81°30'54"
C11	17.41'	200.80'	17.41'	81°30'54"
C12	39.64'	200.80'	39.59'	81°12'18"
C13	58.90'	37.50'	53.03'	89°00'00"
C14	26.89'	500.00'	26.89'	89°05'45"
C15	26.89'	500.00'	26.89'	89°05'45"
C16	29.75'	1400.00'	29.75'	88°11'20"
C17	29.75'	1400.00'	29.75'	88°11'20"
C18	58.90'	37.50'	53.03'	89°00'00"
C19	58.90'	37.50'	53.03'	89°00'00"
C20	58.90'	37.50'	53.03'	89°00'00"
C21	58.90'	37.50'	53.03'	89°00'00"
C22	58.90'	37.50'	53.03'	89°00'00"
C23	58.90'	37.50'	53.03'	89°00'00"
C24	58.90'	37.50'	53.03'	89°00'00"
C25	58.90'	37.50'	53.03'	89°00'00"

KEY MAP



1008 S. Woodward Ave. Suite 101
 Mesa, AZ 85209
 T: 480.933.2246 | F: 480.933.2248
 www.epsgroup.com

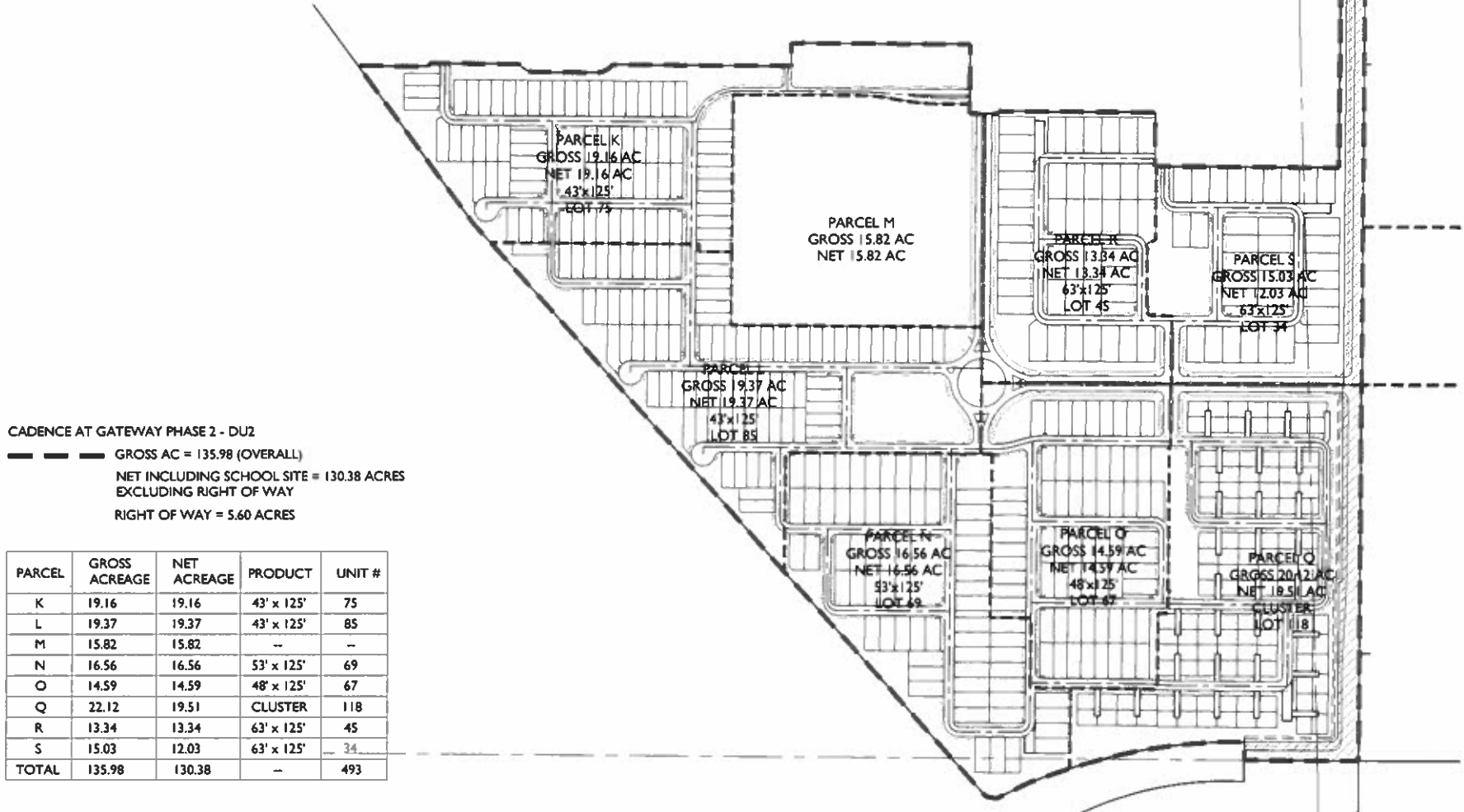
EPS GROUP

CADENCE AT GATEWAY
PHASE 2 & 3 - DUZ
 PRELIMINARY PLAT - DUZ

Project: _____
 Drawn by: _____
 Checked by: _____

DATE: 2018.05.15
 DRAWN BY: J. W. BROWN
 CHECKED BY: J. W. BROWN

18-106
 PP03
 Sheet No.
 4
 of 6



CADENCE AT GATEWAY PHASE 2 - DU2

- - - - - GROSS AC = 135.98 (OVERALL)
 NET INCLUDING SCHOOL SITE = 130.38 ACRES
 EXCLUDING RIGHT OF WAY
 RIGHT OF WAY = 5.60 ACRES

PARCEL	GROSS ACREAGE	NET ACREAGE	PRODUCT	UNIT #
K	19.16	19.16	43' x 125'	75
L	19.37	19.37	43' x 125'	85
M	15.82	15.82	--	--
N	16.56	16.56	53' x 125'	69
O	14.59	14.59	48' x 125'	67
Q	22.12	19.51	CLUSTER	118
R	13.34	13.34	63' x 125'	45
S	15.03	12.03	63' x 125'	34
TOTAL	135.98	130.38	--	493