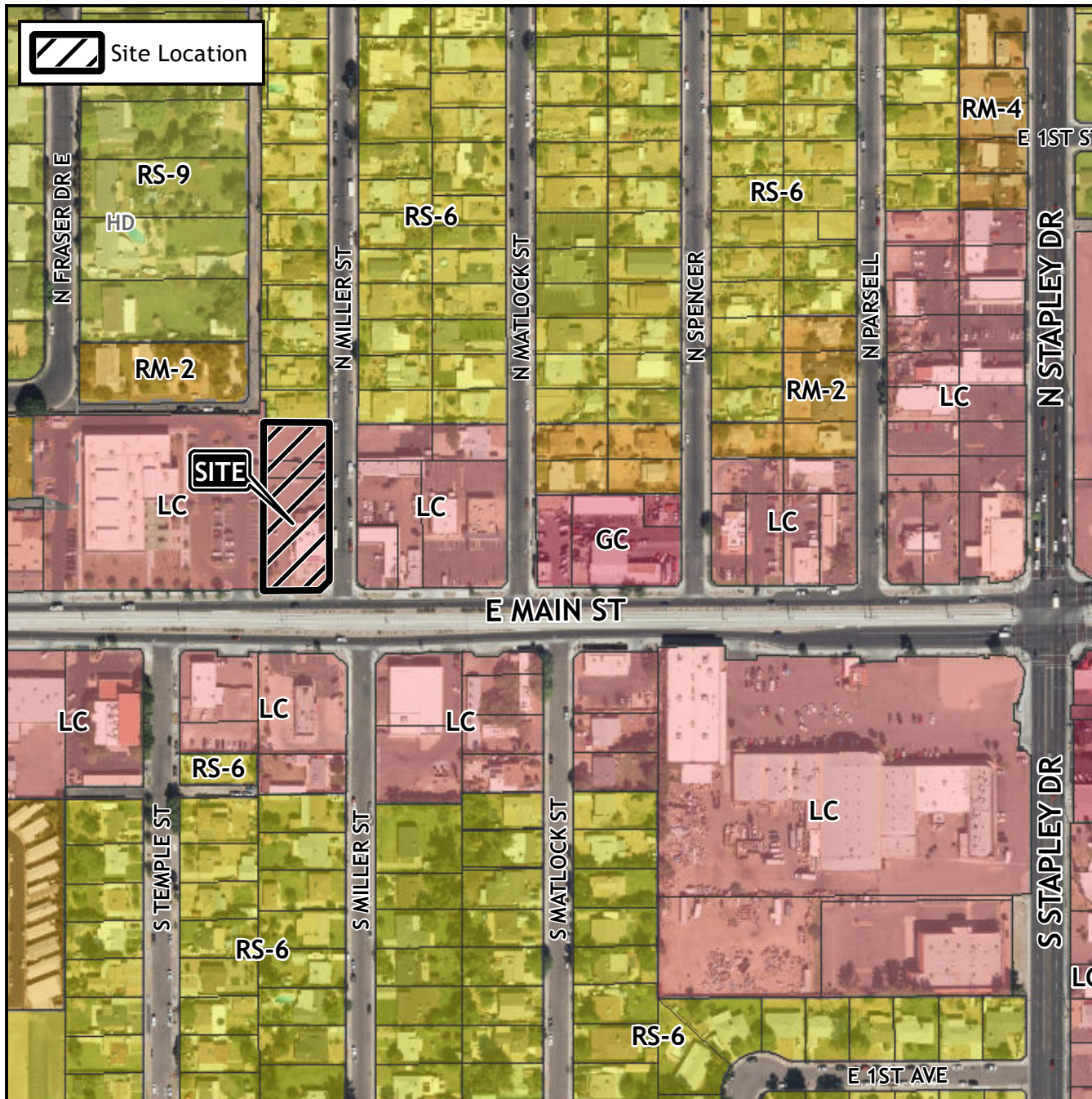


Board of Adjustment Vicinity Map: BOA23-01028



Case Details

Case:

BOA23-01028

Site / Address:

(District 4). 1002 East Main Street.
Located west of Stapley Drive on the
north side of Main Street.

Request:

Requesting a Substantial Conformance
Improvement Permit (SCIP) to deviate
from certain development standards for
a restaurant in the Limited Commercial
(LC) District.

