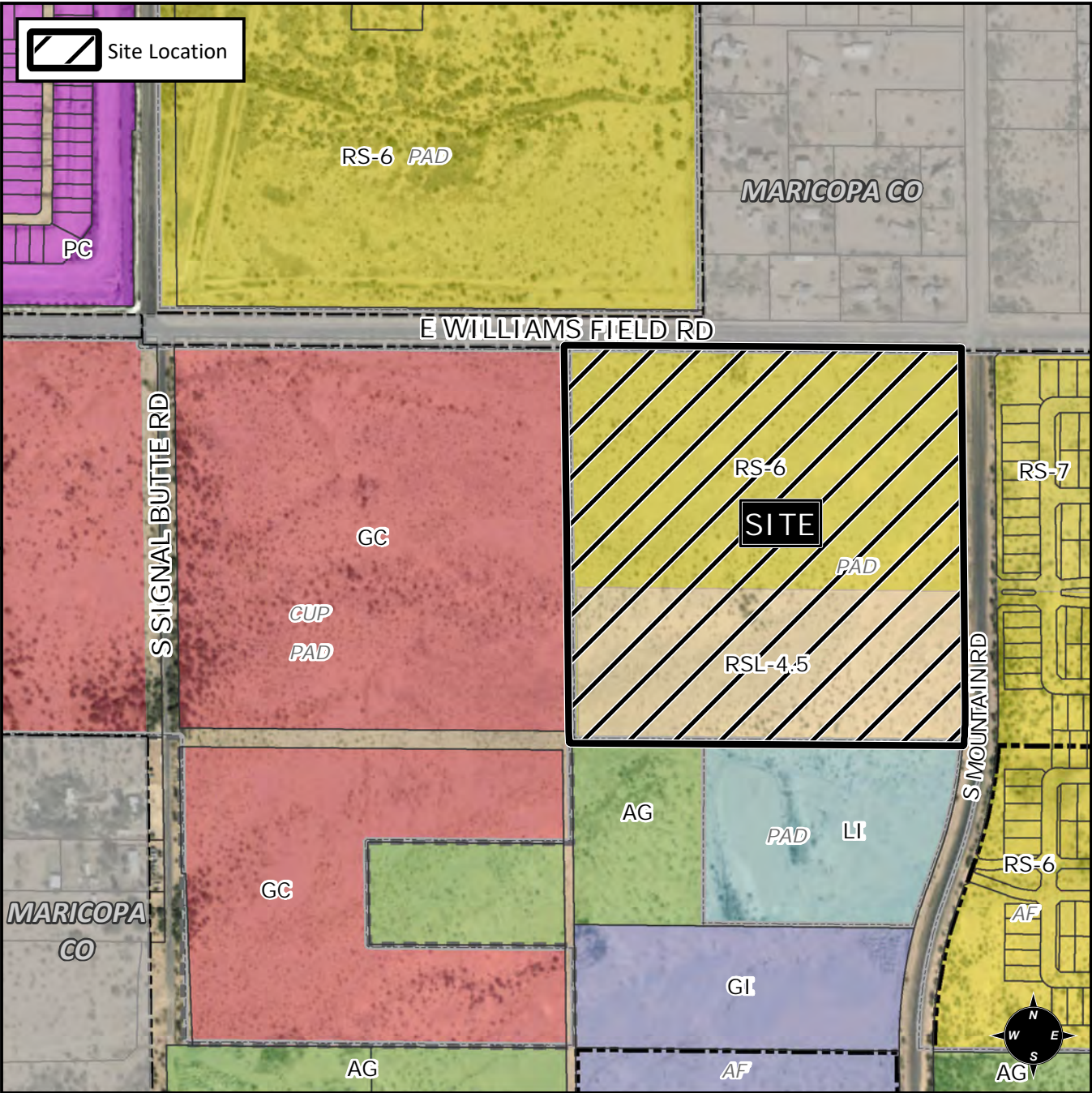


## Final Plat Vicinity Map



## Case Details

Project:

## Tapestry at Destination

Site/Address:

District 6. Within the 11000 to 11200 blocks of East Williams Field Road (south side) and within the 6000 to 6200 blocks of South Mountain Road (west side). (38.2± acres).

Description:

Rescal	Destination	Gateway 145, LLC,
Developer.	Raymond	Munoz, EPS Group,
Surveyor.		

