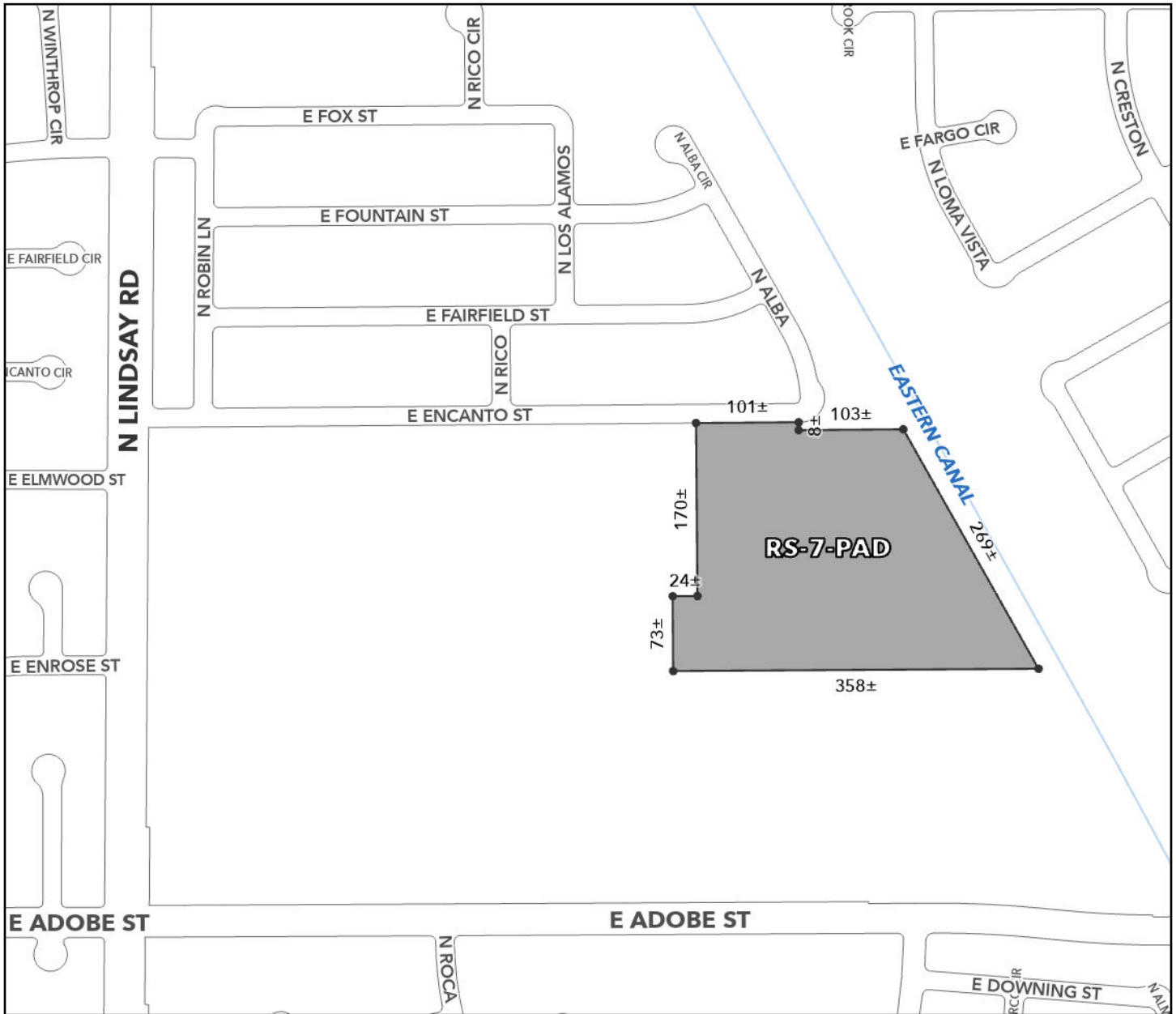




OFFICIAL SUPPLEMENTARY ZONING MAP AMENDING THE CITY OF MESA ZONING MAP



CASE: ZON24-00891

ACREAGE: 11.25±

REQUEST: Rezone from Single Residence-9 (RS-9) to Single Residence-7 with a Planned Area Development Overlay (RS-7-PAD) for a single residence subdivision.

ORDINANCE: 5929

Please be advised that the attached zoning changes were approved by the Mesa City Council on February 24, 2025 by Ordinance # 5929. If you have any questions concerning these changes, contact the City of Mesa Planning Division at 480-644-2385.

ATTEST: _____ DATE: _____
MAYOR CITY CLERK