



**PLANT SCHEDULE**

EXISTING VEGETATION	SIZE / REMARKS	QTY	MATURE TREE CANOPY SIZE
EXISTING TREE (VARIOUS SPECIES)	PRESERVE IN PLACE	PER PLAN	PER PLAN
EXISTING SHRUB, ACCENT + G. COVER	PRESERVE IN PLACE	PER PLAN	PER PLAN
TREES	SIZE / REMARKS	QTY	
CHAMAEROPS HUMILIS MEDITERRANEAN FAN PALM	24" BOX, min. of 3 TRUNKS, MATCHED	7	6' DIA.
EUCALYPTUS PAPUANA GHOST GUM	24" BOX, STANDARD TRUNK, MATCHED	6	15' DIA.
NERIUM SPP. 'RED' RED OLEANDER TREE	25 GAL., STANDARD TRUNK, MATCHED	15	10' DIA.
PHOENIX DACTYLIFERA DATE PALM	15' HT. TO BASE, DIAMOND CUT, MATCHED	3	18' DIA.
PROSOPIS SEEDLESS HYB 'AZT' SEEDLESS HYBRID MESQUITE	24" / 36" BOX, LOW BREAK, MATCHED	2 / 1	20' DIA.
QUERCUS VIRGINIANA 'CATHEDRAL' LIVE OAK	24" / 36" BOX, STANDARD TRUNK, MATCHED	3 / 2	20' DIA.
ULMUS PARVIFOLIA 'TRUE GREEN' ELM	24" / 36" BOX, STANDARD TRUNK, MATCHED	20 / 4	20' DIA.
ACCENTS	SIZE	QTY	
HESPERALOE PARVIFLORA RED YUCCA	5 GAL	20	
MUHLENBERGIA RIGENS DEER GRASS	5 GAL	138	
SHRUBS			
BOUGAINVILLEA 'LA JOLLA' LA JOLLA BOUGAINVILLEA	15 GAL	4	
CALLISTEMON CITRINUS 'LITTLE JOHN' LITTLE JOHN BOTTLEBRUSH	5 GAL	16	
EREMOPHILA GLABRA 'WINTER BLAZE' EREMOPHILA	5 GAL	9	
LEUCOPHYLLUM LAEVIGATUM CHIHUAHUAN SAGE	5 GAL	95	
LEUCOPHYLLUM LANGMANIAE 'RIO BRAVO' SAGE	5 GAL	89	
NERIUM OLEANDER 'P. PINK' PETITE PINK OLEANDER	5 GAL	102	
OLEA EUROPAEA 'LIL OLLIE' DWARF OLIVE	5 GAL	12	
TECOMA STANS 'GOLD STAR' YELLOW BELLS	5 GAL	8	
GROUND COVER			
LANTANA 'NEW GOLD' 'NEW GOLD' LANTANA	1 GAL	140	
LANTANA 'DALLAS RED' DALLAS RED LANTANA	1 GAL	16	
INERT MATERIALS			
D.G. DECOMPOSED GRANITE 'PAINTED DESERT' (ROCK PROS USA)	1/2" SCREENED, 2" MIN DEPTH	PER PLAN	

**PRELIMINARY LANDSCAPE PLAN**

SCALE: 1" = 30'-0"

COPYRIGHT © 2025 BY YOUNG | DESIGN | GROUP, LLC. NO ALTERATIONS TO THESE PLANS ARE ALLOWED OTHER THAN AUTHORIZED YOUNG | DESIGN | GROUP EMPLOYEES. THIS DOCUMENT IS THE SOLE PROPERTY OF YOUNG | DESIGN | GROUP, LLC.

Young | design | group  
 Landscape Architecture  
 + Land Planning  
 7234 east shoeman lane  
 suite 8  
 scottsdale, arizona 85251  
 tel. 480.257.3312



**LIVAWAY SUITES**  
 BANNER GATEWAY DR. + GREENFIELD RD.  
 MESA | AZ | 85206

DATE: 01/17/25  
 JOB NO: 2431  
 DRAWN BY: JMY / KH  
 CHECKED BY: JMY  
 REVISIONS: DATE:  
 CITY: 02/19/25  
 SUBMITTED FOR:

PRELIMINARY REVIEW

SHEET NO.  
**LC.1**  
 4 OF 4

TRACKING NUMBERS: ZON25-00047

# LIVAWAY SUITES

BANNER GATEWAY DR. + GREENFIELD RD. | MESA | AZ | 85206

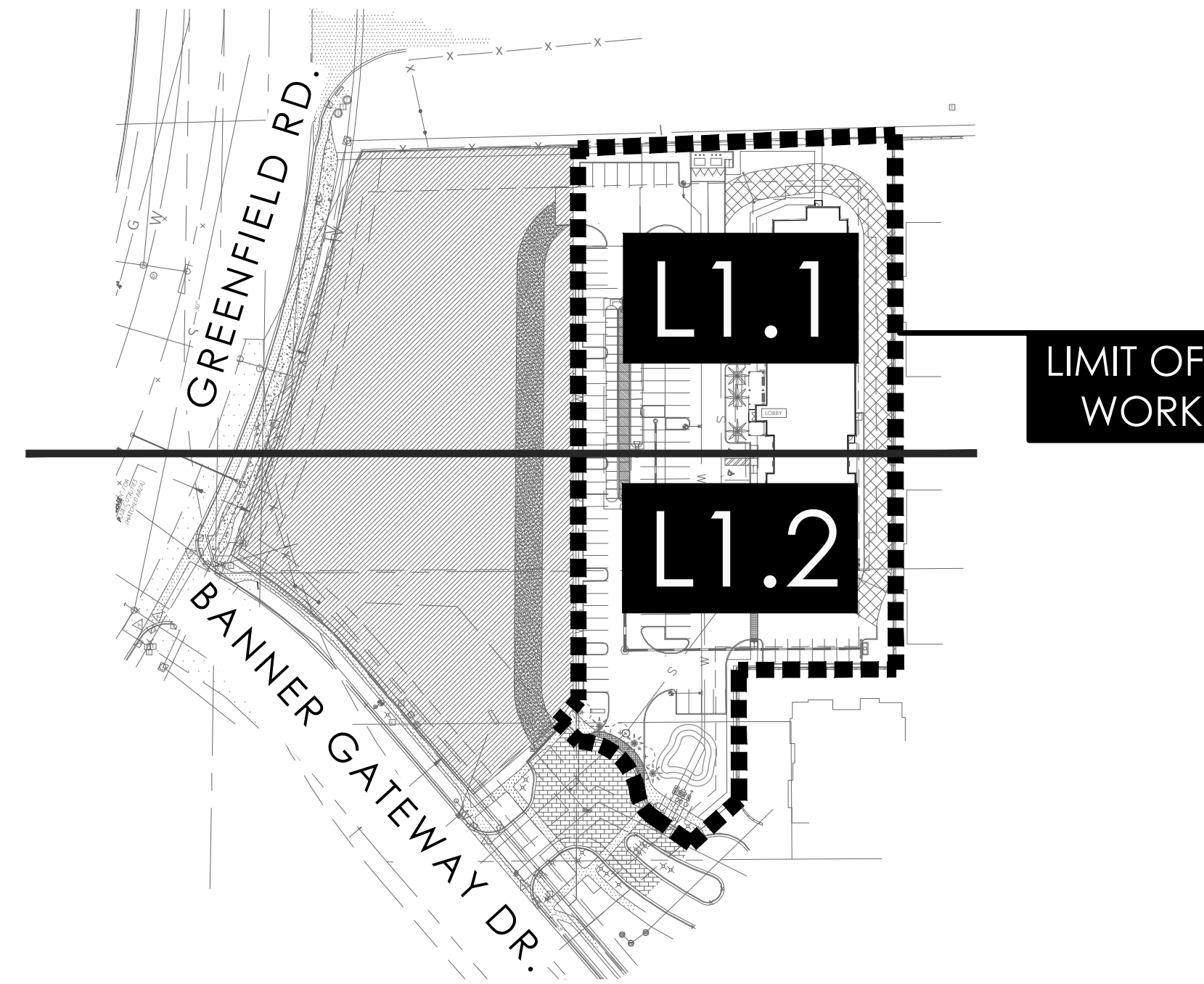
## PRELIMINARY LANDSCAPE PLAN

### GENERAL NOTES

- ALL PLANTING AREAS ARE TO HAVE DECOMPOSED GRANITE TOP DRESSING. ALL GRANITE IS TO BE 2" DEPTH, COLOR AS SPECIFIED, TYP.
- NO PLANT SUBSTITUTIONS ALLOWED UNLESS APPROVED IN WRITING BY LANDSCAPE ARCHITECT AND CONFORMING TO LOCAL AGENCY'S APPROVED PLANT LIST.
- LANDSCAPE ARCHITECT IS TO APPROVE ALL PLANT MATERIAL PRIOR TO DELIVERY TO SITE. ONE WEEK MINIMUM NOTICE.
- LANDSCAPE ARCHITECT TO INSPECT TREES PRIOR TO PURCHASE.
- LANDSCAPE CONTRACTOR IS RESPONSIBLE TO VERIFY ALL CONDITIONS ON SITE PRIOR TO PROJECT START-UP.
- REFER TO PLANTING DETAILS. BACKFILL: NATIVE SOILS FREE OF CONTAMINATION AND ROCKS OVER 3 INCHES IN DIAMETER.
- COMPLETE ALL TRENCHING, LANDSCAPE GRADING, BERMING AND SWALES PRIOR TO START OF PLANTING.
- LANDSCAPE CONTRACTOR IS RESPONSIBLE TO REPAIR ANY DAMAGES MADE TO EXISTING LANDSCAPING, UNDERGROUND UTILITIES, IRRIGATION LINES, ELECTRICAL LINES, ETC., AT HIS EXPENSE.
- ANY PLANT MATERIAL NOT SHOWN TO REMAIN ON PLAN IS TO BE REMOVED.
- ADJUST ALL NEW LANDSCAPING AS NECESSARY TO ACCOMMODATE EXISTING LANDSCAPE TO REMAIN.
- CONTRACTOR IS TO VERIFY LOCATIONS OF ALL UNDERGROUND UTILITIES PRIOR TO ANY SITE WORK BEING EXECUTED.
- QUANTITIES ON PLAN ARE PROVIDED FOR BIDDING PURPOSES ONLY. LANDSCAPE CONTRACTOR IS RESPONSIBLE TO VERIFY ALL QUANTITIES PRIOR TO CONSTRUCTION.
- ALL AREAS DISTURBED DURING CONSTRUCTION ARE TO BE FINE GRADED AND TREATED TO BLEND EVENLY WITH ALL NEW AREAS.
- LANDSCAPE ARCHITECT / OWNERS REPRESENTATIVE RESERVES THE RIGHT TO REJECT ANY PLANT MATERIAL THAT IS DETERMINED TO NOT SATISFY THE DESIGN INTENT OF THE LANDSCAPE PLAN ON SIZE, SHAPE, APPEARANCE, HEALTH, OR IMPROPER CARE.
- NOTE: SURFACE-FERTILIZE PLANTS AS PART OF COMMON-AREA MAINTENANCE CONTRACT.
- APPLY A SOLUTION OF "SUPERTHRIVE" COMBINED WITH LIQUID CHELATED IRON SUPPLEMENT AS PLANT IS BEING WATERED IN AT THE FOLLOWING RATES:
  - BASIC MIX: 1/4 TSP. (TEASPOON) SUPERTHRIVE AND 1 TSP. IRON SUPPLEMENT PER GAL. OF WATER.
  - TREES: APPLY 4 GALLONS OF BASIC MIX.
  - SHRUBS AND SUCCULENTS 1 GAL. AND 5 GAL.: APPLY 1 GALLON OF BASIC MIX.
  - SHRUBS AND SUCCULENTS 15 GAL.: APPLY 2 GALLONS OF BASIC MIX.
- REMOVE NURSERY PROVIDED STAKING AND TAPING FROM ALL PLANTS, IF APPLICABLE. STAKE NURSERY GROWN TREES AS DETAILED.
- WATER SUPPLY MUST BE OPERATIONAL PRIOR TO PLANT INSTALLATION.
- PRUNE DEAD OR DAMAGED BRANCHES AFTER PLANTING. PRUNE TREES OF LIVING BRANCHES, ONLY IF DIRECTED BY THE LANDSCAPE ARCHITECT OR OWNER, AFTER PLANTING.
- BEFORE PLANTING, STAKE OR FLAG THE LOCATION OF ALL PLANTS OR PLACE CONTAINERS UP TO 15 GAL. AT LOCATIONS SHOWN ON PLAN AND ARRANGE TO HAVE THE LANDSCAPE ARCHITECT REVIEW AND APPROVE THE LOCATIONS. LANDSCAPE ARCHITECT MAY REVISE LOCATIONS ONCE BEFORE PLANTING.
- REMOVE ALL WEED GROWTH FROM AREAS TO BE LANDSCAPED. IF WEED CONTROL IS NEEDED, USE CAREFULLY APPLIED CONTACT HERBICIDE, "ROUND-UP" OR EQUAL. APPLY BY HAND SPRAYER TO AVOID DAMAGE TO NEW PLANTS.
- ALL BOULDERS ARE TO BE GRANITE "SURFACE SELECT", SIZE PER PLAN. ALL BOULDERS ARE TO BE BURIED 1/3 IN SOIL.
- ALL SWALE CHANNELS ARE TO HAVE 6" - 8" FRACTURED GRANITE OR OTHER APPROVED STONE MATERIAL INSTALLED TO PREVENT EROSION.
- ALL DOWNSPOUTS / SCUPPERS ARE TO HAVE 3x3", 3" - 6" FRACTURED GRANITE OR OTHER APPROVED STONE MATERIAL INSTALLED TO PREVENT EROSION.
- ALL BERM CONTOUR INTERVALS ARE AT 1'-0", SLOPES NOT TO EXCEED 4:1.
- ALL TURF IS TO BE "MID-IRON" HYBRID VARIETY.
- ALL HEADER IS TO BE CAST IN PLACE CONCRETE. COLOR TO BE SELECTED.
- CONTRACTOR IS RESPONSIBLE TO COORDINATE HEADER INSTALLATION WITH GRADING CONTRACTOR. ANY LOCATIONS WHERE RIP-RAP SWALES ARE ADJACENT TO TURF AREAS, HEADER IS TO HAVE A DRAINAGE OUTLET (TURN-DOWN) FOR THE WIDTH OF THE RIP RAP AREA, TYP.
- CONTRACTOR TO ENSURE THAT SLEEVE FOR IRRIGATION GOES UNDER EVERY DRIVEWAY (INCLUDING Z-LOTS).
- ALL LANDSCAPING AND STRUCTURES CONSTRUCTED FROM THIS PLAN HAVE BEEN DESIGNED WITHIN STANDARD CITY REQUIREMENTS AND SHALL BE THE RESPONSIBILITY OF THE DEVELOPER / HOA TO MAKE NECESSARY REPAIRS DUE TO VANDALISM / THEFT / OR NEGLIGENCE. DEVELOPER / HOA DOES NOT HOLD (YOUNG DESIGN GROUP, LLC) RESPONSIBLE FOR ANY DAMAGES INCURRED AS SUCH.
- JUTE NETTING TO BE INSTALLED ON ALL SLOPES GREATER THAN 4:1 WITH 100% LIVE PLANT COVER.
- WARRANTY ALL PLANT MATERIAL TO BE IN HEALTHY GROWTH FOR THE PERIODS OF: TREES: 365 DAYS SHRUBS, VINES AND GROUNDCOVERS: 90 DAYS, STARTING AT DATE OF FINAL ACCEPTANCE, REPLACE MATERIAL NOT SHOWING HEALTHY GROWTH WITHIN 10 WORKING DAYS OF NOTIFICATION BY OWNER.
- YDG DOES NOT WARRANT AVAILABILITY OF SPECIES OR SIZES OF PLANTS LISTED. "AVAILABLE" SHALL MEAN AVAILABLE IN A WHOLESALE NURSERY IN ARIZONA OR CALIFORNIA. NOTIFY OWNER AND YDG OF NON-AVAILABILITY FOR ISSUANCE OF SUBSTITUTION BY YDG.
- CITY APPROVAL OF THESE PLANS SHALL SIGNIFY AND CONFIRM OWNER'S CAREFUL REVIEW AND APPROVAL OF THESE PLANS, INCLUDING PLANT SPECIES AND SIZES LISTED. OWNER SHALL OBTAIN UNIT PLANT COSTS, INSTALLED & GUARANTEED.
- TYPICAL MINIMUM SETBACKS FROM EDGE OF WALKS, DRIVES AND BUILDINGS: TREES: 6 FT.; SHRUBS: 3 FT.; GROUNDCOVER: 2 FT. (UNLESS NOTED OTHERWISE IN GEOTECH / SOILS REPORT WHICH SHALL GOVERN IN LIEU OF SETBACKS RECOMMENDED HEREIN / CONTRACTOR TO ADJUST OR ELIMINATE PLANTS TO COMPLY WITH GEOTECH RECOMMENDATIONS AS NEEDED)
- AREAS IN SIGHT TRIANGLES SHALL HAVE NO OBSTRUCTION GREATER THAN 2 FT. HT. AND TREES SHALL HAVE CANOPY HIGHER THAN 7 FT. AT TIME OF PLANTING.
- NOTE THAT NURSERY-GROWN TREES MUST HAVE TRUNK DIAMETER IN PROPORTION TO HEIGHT, AND THAT CONTRACTOR MUST INSPECT EACH TREE FOR ROOT-BINDING AND OTHER GROWTH DEFECTS, AND REMOVE DEFECTIVE PLANTS FROM THE SITE.
- TREES TO MEET LOCAL JURISDICTIONS ZONING SIZE REQUIREMENTS AT THE TIME OF PLANTING. TREES THAT DO NOT MEET MIN. REQUIREMENTS SHALL BE REPLACED IN KIND WITH TREE THAT MEETS REQUIREMENTS.
- ANY DISTURBED AREAS AREAS NOT INITIALLY BUILT UPON WILL NEED A COUNTY / CITY APPROVED DUST CONTROL MATERIAL INSTALLED.
- TREES THAT ARE PLANTED AS 24" BOX MUST HAVE 2" CALIPER AFTER FIRST YEAR OF GROWTH.

### GRADING GENERAL NOTES

- THESE PLANS ARE NOT A REFERENCE FOR ANY TYPE OF SITE DRAINAGE INCLUDING STORMWATER RUNOFF FROM BUILDING ROOFS OR DOWNSPOUTS AND LANDSCAPE AREAS ADJACENT TO BUILDINGS. SEE CIVIL / ARCHITECTURAL PLANS FOR MORE INFORMATION.
- CONTRACTOR SHALL FINISH GRADE TO MAINTAIN POSITIVE DRAINAGE AWAY FROM ALL STRUCTURES AND MAINTAIN AND / OR CREATE DRAINAGE SPECIFIED ON THE PROJECT CIVIL ENGINEERS CONSTRUCTION DOCUMENTS. CONTRACTOR SHALL KEEP DRAINAGE WAYS AND NATURAL FLOW CHANNELS SPECIFIED FREE FROM OBSTRUCTIONS THAT MAY IMPAIR FLOW.
- CONTRACTOR IS REQUIRED TO REMOVE ANY SPOILS EXCAVATED FOR IRRIGATION, UNDERGROUND UTILITIES, ETC., THAT MAY AFFECT DRAINAGE AS DESIGNED BY CIVIL ENGINEER.
- AESTHETIC FINISH GRADING SHALL BE BY THE DIRECTION OF THE LANDSCAPE ARCHITECT. ALL GRADING SHALL BE APPROVED BY OWNERS AUTHORIZED REPRESENTATIVE PRIOR TO PLANTING.
- FINISH GRADE OF ALL PLANTING AREAS (DG) IS TO BE 1" BELOW ADJACENT HARDSCAPE UNLESS OTHERWISE NOTED.
- CONTRACTOR IS TO REFERENCE GEOTECH / SOILS REPORT FOR ADDITIONAL INFORMATION REGARDING DRAINAGE AND / OR SOILS CONDITIONS THAT MAY AFFECT CONSTRUCTION OF LANDSCAPE IMPROVEMENTS.
- CONTRACTOR IS TO REFERENCE GEOTECH / SOILS REPORT FOR ANY RECOMMENDATIONS OR REQUIREMENTS FOR LOCATIONS OF PLANT MATERIALS OR IRRIGATION COMPONENTS IN RELATION TO BUILDINGS OR STRUCTURES. RECOMMENDATIONS IN GEOTECH / SOILS REPORT SHALL SUPERCEDE ANY INFORMATION AS WRITTEN IN THESE PLANS.
- CONTRACTOR SHALL NOTIFY OWNER'S REPRESENTATIVE IF ANY CONDITIONS IN FIELD DEViate OR CONFLICT WITH CIVIL ENGINEER'S SITE GRADING PLANS.



OVERALL SITE PLAN

NOT TO SCALE

### CITY OF MESA NOTES

- REQUIRED TREES SHALL BE A MINIMUM SIZE AS SPECIFIED IN THE ARIZONA NURSERY ASSOCIATION "RECOMMENDED TREE SPECIFICATIONS" LATEST EDITION 11-33-2(B)
- ALL LANDSCAPE MATERIAL INSTALLED SHALL BE MAINTAINED BY OWNER / LESSEE IN ACCORDANCE WITH THE APPROVED LANDSCAPE PLAN. 11-33-2(I)
- UPON COMPLETION OF LANDSCAPE IMPROVEMENTS, MAINTENANCE CONTRACTOR IS TO PROVIDE A "NATURAL" MAINTENANCE PROGRAM TO ALL NORTH AND WEST PERIMETER LANDSCAPE AREAS INCLUDING LANDSCAPE BUFFER AREAS. ALL INTERIOR COURTYARD AND MAIN DRIVE AND FRONTAGE LANDSCAPE AREAS ARE TO BE MAINTAINED IN A "FORMAL" MANNER. ALL AREAS ARE TO BE MAINTAINED IN ACCORDANCE WITH THE BEST MANAGEMENT PRACTICES OF THE LANDSCAPE INDUSTRY. 11-33-2(I)4
- ALL TREES AND SHRUBS LOCATED IN THE LINE-OF-SIGHT WILL BE MAINTAINED FOR A CLEAR AREA BETWEEN 3'-7" AND SHOW LINE OF SIGHT ON LANDSCAPE PLAN.
- REQUIRED LANDSCAPE AREAS SHALL BE FREE FROM ENCROACHMENT BY AND USE, STRUCTURE, VEHICLE OR FEATURE NOT A PART OF THE LANDSCAPING DESIGN. 11-33-2(A)
- BACKFLOW PREVENTERS 2" OR LARGER SHALL BE SCREENED WITH LANDSCAPE MATERIAL LOCATED WITHIN A 6' RADIUS OF THE BACKFLOW PREVENTERS. ALL BACKFLOW PREVENTERS LESS THAN 2" SHALL BE PLACED IN A WIRE MESH BASKET AND PAINTED GREEN. (THE POLICE DEPARTMENT'S CRIME PREVENTION DIVISION HAS REQUESTED THE CHANGE TO GREEN TO DISCOURAGE THEFT.) [PAGE 30]

### MISC. NOTES

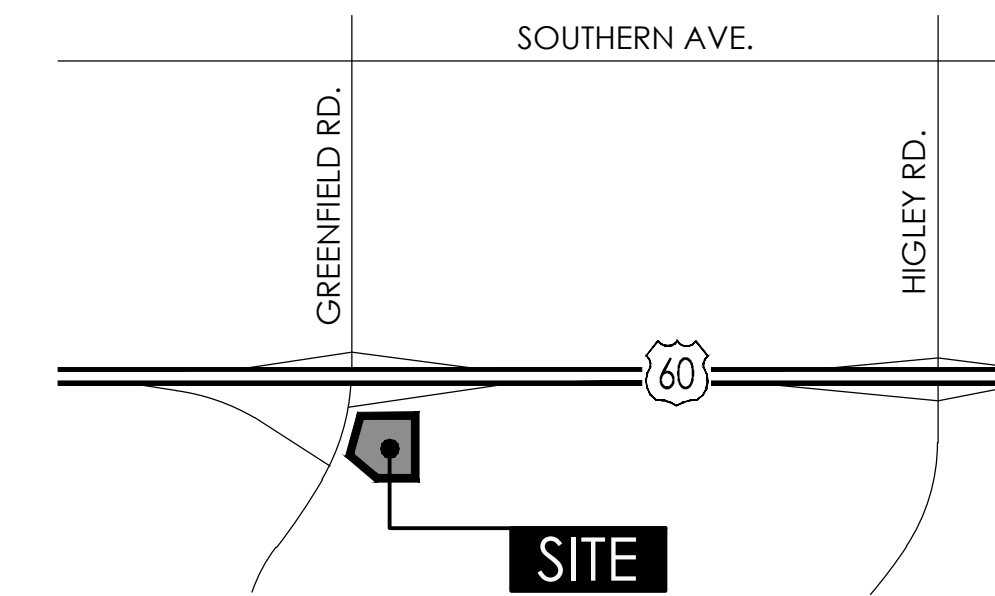
- A MINIMUM OF 3' CLEARANCE SHALL BE MAINTAINED AROUND ALL FIRE HYDRANTS WHERE NOTHING WILL BE PLANTED OR WILL GROW.
- TRANSFORMERS SHALL HAVE MINIMUM CLEAR ZONES PER UTILITY COMPANY REQUIREMENTS WHERE NO OBSTRUCTIONS SHALL BE PLACED INCLUDING PLANT MATERIAL.

### MAINTENANCE NOTES

UPON COMPLETION OF LANDSCAPE IMPROVEMENTS, MAINTENANCE CONTRACTOR IS TO PROVIDE A "NATURAL" MAINTENANCE PROGRAM TO ALL PERIMETER LANDSCAPE AREAS INCLUDING STREET FRONTAGES AND FOUNDATION PLANTERS. ALL INTERIOR COURTYARD LANDSCAPE AREAS ARE TO BE MAINTAINED IN A "FORMAL" MANNER. ALL AREAS ARE TO BE MAINTAINED IN ACCORDANCE WITH THE BEST MANAGEMENT PRACTICES OF THE LANDSCAPE INDUSTRY.

### VICINITY MAP

NOT TO SCALE



### PROJECT TEAM

**DEVELOPER:**  
WEST 77 PARTNERS  
3300 N. TRIUMPH BLVD, SUITE G70  
LEHI, UT 84043  
PH: (484) 797-0627  
CONTACT: MATT HOOK  
matt@west77partners.com

**ARCHITECT:**  
BRR ARCHITECTURE, INC  
PH: (913) 262-9095  
CONTACT: RYAN ROSCHE  
ryan.rosche@brrarch.com

**CIVIL ENGINEER:**  
KBELL ENGINEERING  
1355 NORTH 86TH PL.  
MESA, AZ 85207  
PH: (602) 980-8246  
CONTACT: KELLY BELL  
kbell@kbelleng.com

**LANDSCAPE ARCHITECT:**  
YOUNG DESIGN GROUP  
7234 EAST SHOEMAN LN.  
SUITE # 8  
SCOTTSDALE, AZ 85251  
PH: (480) 257-3312  
CONTACT: JOE YOUNG  
jyoung@youngdg.com

### SHEET INDEX

1	L0.1	COVER SHEET + NOTES
2	L0.2	CITY OF MESA LANDSCAPE CALCULATIONS
3-4	L1.1-L1.2	PRELIMINARY LANDSCAPE PLAN

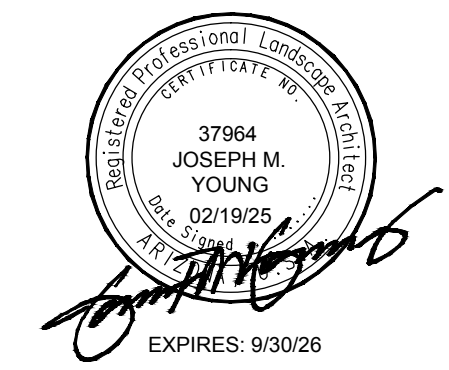
### SITE DATA

NET SITE AREA \_\_\_\_\_ (+/-) 102.892 S.F.  
(+/-) 2.36 AC.

### APPROVAL:

ZONING: CONCEPTUAL USES

Young | design | group  
Landscape Architecture  
+ Land Planning  
7234 east shoeman lane  
suite 8  
scottsdale, arizona 85251  
tel. 480.257.3312



**LIVAWAY SUITES**  
 BANNER GATEWAY DR. + GREENFIELD RD.  
 MESA | AZ | 85206

DATE:	01/17/25
JOB NO:	2431
DRAWN BY:	JMY / KH
CHECKED BY:	JMY
REVISIONS:	DATE:
CITY	02/19/25
SUBMITTED FOR:	

PRELIMINARY REVIEW

SHEET NO.  
**L0.1**  
1 OF 4

TRACKING NUMBERS: ZON25-00047

COPYRIGHT ©2025 BY YOUNG | DESIGN | GROUP, LLC. NO ALTERATIONS TO THESE PLANS ARE ALLOWED OTHER THAN AUTHORIZED YOUNG | DESIGN | GROUP EMPLOYEES. THIS DOCUMENT IS THE SOLE PROPERTY OF YOUNG | DESIGN | GROUP, LLC.

TOTAL LANDSCAPE AREA PROVIDED ON SITE \_\_\_\_\_ 19,909 S.F.  
(NOT INCLUDING FIRE LANE)

TABLE 11-33-2-E: VEGETATION CREDIT TABLE

TYPE OF PLANTING MATERIAL	CREDIT IN SQUARE FEET	QTY PROVIDED	** QTY EXISTING	TOTAL SQ. FT.
EVERGREEN TREE (AT LEAST 25' TALL AT MATURITY) <sup>1</sup>	100	45	10	5,500 S.F.
SHADE TREE	50	-	-	0 S.F.
ORNAMENTAL TREE	25	15	-	375 S.F.
LARGE SHRUB (MORE THAN 8' TALL AT MATURITY)	50	-	-	-
MEDIUM SHRUB (AT LEAST 4-8' TALL AT MATURITY)	25	298	5	7,575 S.F.
SMALL SHRUB (LESS THAN 4' TALL AT MATURITY)	10	37	-	370 S.F.
COLUMNAR DECIDUOUS OR EVERGREEN TREE	25	3	2	125 S.F.
COLUMNAR EVERGREEN SHRUB (LESS THAN 8' TALL AT MATURITY)	10	-	-	0 S.F.
EVERGREEN GROUNDCOVER	25	156	3	3,975 S.F.
PERENNIAL PLANT AND GROUNDCOVER, BULB / TUBER AND ORNAMENTAL GRASS <sup>2</sup>	5	-	-	0 S.F.
1. DWARF TREES OR TREE VARIETIES WITH A MATURE WIDTH OF LESS THAN 10' SHALL COUNT AS 25 SQUARE FEET				
2. LARGE ORNAMENTAL GRASS, OVER 4' AT MATURITY, SHALL COUNT AS 10 SQUARE FEET				

\*\* EXISTING LANDSCAPE MATERIAL WAS INSTALLED WITH PREVIOUS PHASE IMPROVEMENTS AT PROJECT ENTRANCE

GRAND TOTAL S.F. LANDSCAPE COVERAGE PROVIDED 19,500 S.F.  
98 %

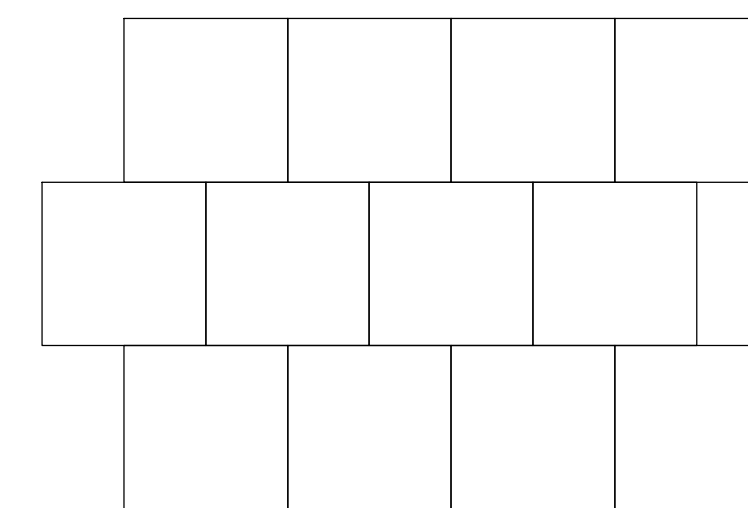
COVERAGE REQUIRED (75%) 14,932 S.F.

CITY OF MESA LANDSCAPE REQUIREMENTS :

PERIMETER LANDSCAPING (NON-SINGLE RESIDENCE USE ADJACENT TO NON-SINGLE RESIDENCE)	REQUIRED / PROVIDED
3 TREE PER 100 LINEAL FEET • 50% OF TREES TO BE 24" BOX • 20 SHRUBS PER 100 LINEAL FEET (5 GALLON MINIMUM SIZE)	<b>872 LINEAR FEET OF PERIMETER / 27 TREES REQ'D / 174 SHRUBS REQ'D</b> • 13 TREES AT 24" BOX / 3 36" BOX / 12 EXISTING MATURE TREES • 212 SHRUBS PROVIDED (5 GALLON MINIMUM SIZE)
PARKING LOT LANDSCAPE	REQUIRED / PROVIDED
1 TREE PER STANDARD PARKING ISLAND (8x15) • 10% OF TREES TO BE 36" BOX • 90% OF TREES TO BE 24" BOX • 3 SHRUBS PER TREE (5 GALLON MINIMUM SIZE)	<b>26 STANDARD PARKING ISLANDS / 26 TREES REQ'D / 78 SHRUBS REQ'D</b> • 6 TREES AT 36" BOX PROVIDED (23%) • 20 TREES AT 24" BOX PROVIDED (77%) • 90 SHRUBS PROVIDED (5 GALLON MINIMUM SIZE)
FOUNDATION BASE LANDSCAPE	REQUIRED / PROVIDED
1 TREE PER 50 LINEAL FEET OF EXTERIOR BLDG. WALL • 10% OF TREES TO BE 36" BOX • 90% OF TREES TO BE 24" BOX • 3 SHRUBS PER TREE (5 GALLON MINIMUM SIZE)	<b>(+/-) 327 LINEAR FEET / 7 TREES REQ'D / 35 SHRUBS REQ'D</b> • 1 TREE AT 36" BOX PROVIDED / PALM (10%) • 15 TREES AT 24" BOX (25 GALLON) PROVIDED (21.4%) • 170 SHRUBS PROVIDED (5 GALLON MINIMUM SIZE)

'TREES ARE COOL' SHADE INITIATIVE CALCULATIONS

TOTAL CANOPY COVERAGE (TREES AS LISTED IN PLANT SCHEDULE)	PERCENTAGE OF SITE COVERAGE
(+/-) 13,646 S.F. (NEW TREES)	TOTAL SITE AREA = (+/-) 102,892 S.F. SHADE COVERAGE OF TOTAL SITE AREA = (+/-) 16.3%
(+/-) 3,108 S.F. (EXISTING TREES TO REMAIN)	



6"x6" STACKED BOND PATTERN  
80 MM THICKNESS FOR ALL AREAS

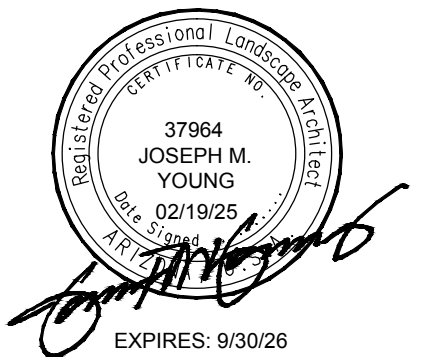


BELGARD PAVERS COLORS 'DESERT BLEND'

1 CONCRETE PAVERS (AT CROSSWALKS)

N.T.S.

Young | design | group  
Landscape Architecture  
+ Land Planning  
7234 east shoeman lane  
suite 8  
scottsdale, arizona 85251  
tel. 480.257.3312



LIVAWAY SUITES  
BANNER GATEWAY DR. + GREENFIELD RD.  
MESA | AZ | 85206

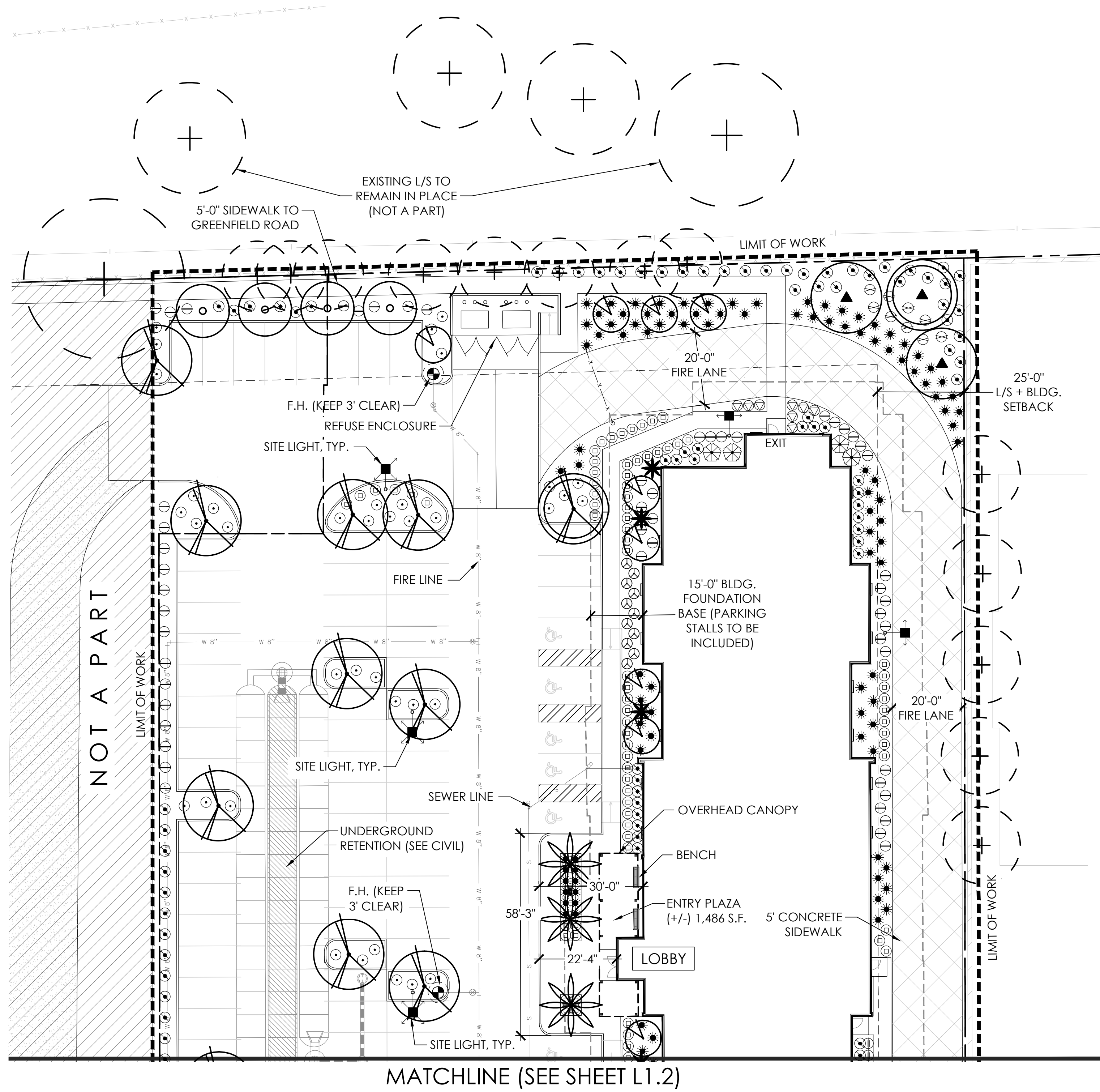
DATE: 01/17/25  
JOB NO: 2431  
DRAWN BY: JMY / KH  
CHECKED BY: JMY  
REVISIONS: DATE:  
CITY 02/19/25  
SUBMITTED FOR:

PRELIMINARY  
REVIEW

SHEET NO.  
**L0.2**  
2 OF 4

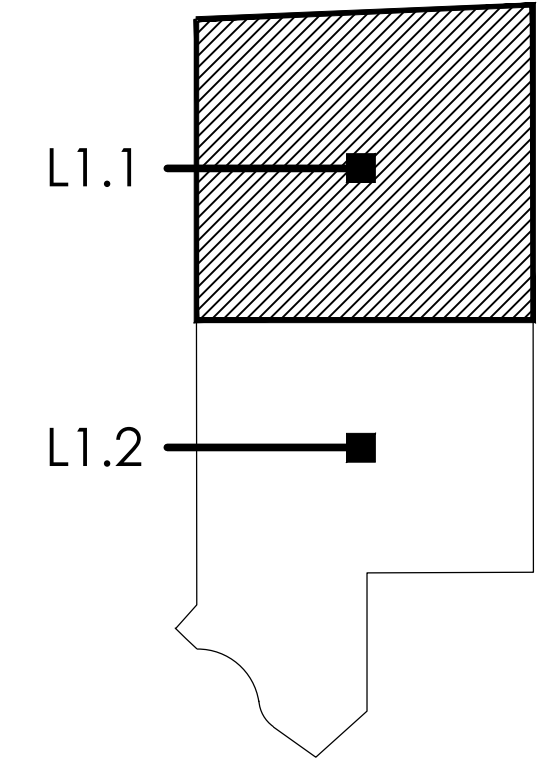
TRACKING NUMBERS: ZON25-00047

COPYRIGHT © 2025 BY YOUNG | DESIGN | GROUP, LLC. NO ALTERATIONS TO THESE PLANS ARE ALLOWED OTHER THAN AUTHORIZED YOUNG | DESIGN | GROUP EMPLOYEES. THIS DOCUMENT IS THE SOLE PROPERTY OF YOUNG | DESIGN | GROUP, LLC.



# PRELIMINARY LANDSCAPE PLAN

SCALE: 1" = 20'-0"



SHEET KEY NOT TO SCALE

## PLANT SCHEDULE

EXISTING VEGETATION	SIZE / REMARKS	QTY	MATURE TREE CANOPY SIZE	
EXISTING TREE (VARIOUS SPECIES)	PRESERVE IN PLACE	PER PLAN	PER PLAN	
EXISTING SHRUB, ACCENT + G.COVER	PRESERVE IN PLACE	PER PLAN	PER PLAN	
TREES		SIZE / REMARKS	QTY	MATURE TREE CANOPY SIZE
CHAMAEROPS HUMILIS MEDITERRANEAN FAN PALM	24" BOX, min. of 3 TRUNKS, MATCHED	7	6' DIA.	
EUCALYPTUS PAPUANA GHOST GUM	24" BOX, STANDARD TRUNK, MATCHED	6	15' DIA.	
NERIUM SPP. 'RED' RED OLEANDER TREE	25 GAL., STANDARD TRUNK, MATCHED	15	10' DIA.	
PHOENIX DACTYLIFERA DATE PALM	15' HT. TO BASE, DIAMOND CUT, MATCHED	3	18' DIA.	
PROSOPIS SEEDLESS HYB 'AZT' SEEDLESS HYBRID MESQUITE	24" / 36" BOX, LOW BREAK, MATCHED	2 / 1	20' DIA.	
QUERCUS VIRGINIANA 'CATHEDRAL' LIVE OAK	24" / 36" BOX, STANDARD TRUNK, MATCHED	3 / 2	20' DIA.	
ULMUS PARVIFOLIA 'TRUE GREEN' ELM	24" / 36" BOX, STANDARD TRUNK, MATCHED	20 / 4	20' DIA.	
ACCENTS		SIZE	QTY	
HESPERALOE PARVIFLORA RED YUCCA	5 GAL	20		
MUHLENBERGIA RIGENS DEER GRASS	5 GAL	138		
SHRUBS		SIZE	QTY	
BOUGAINVILLEA 'LAJOLLA' LA JOLLA BOUGAINVILLEA	15 GAL	4		
CALLISTEMON CITRINUS 'LITTLE JOHN' LITTLE JOHN BOTTLEBRUSH	5 GAL	16		
EREMOPHILA GLABRA 'WINTER BLAZE' EREMOPHILA	5 GAL	9		
LEUCOPHYLLUM LAEVIGATUM CHIHUAHUAN SAGE	5 GAL	95		
LEUCOPHYLLUM LANGMANIAE 'RIO BRAVO' SAGE	5 GAL	89		
NERIUM OLEANDER 'P. PINK' PETITE PINK OLEANDER	5 GAL	102		
OLEA EUROPAEA 'LIL OLLIE' DWARF OLIVE	5 GAL	12		
TECOMA STANS 'GOLD STAR' YELLOW BELLS	5 GAL	8		
GROUNDCOVER		SIZE	QTY	
LANTANA 'NEW GOLD' 'NEW GOLD' LANTANA	1 GAL	140		
LANTANA 'DALLAS RED' 'DALLAS RED' LANTANA	1 GAL	16		
INERT MATERIALS		SIZE	QTY	
D.G. DECOMPOSED GRANITE 'PAINTED DESERT' (ROCK PROS USA)	1/2" SCREENED, 2" MIN DEPTH	PER PLAN		

Young | design | group  
 Landscape Architecture  
 + Land Planning  
 7234 east shoeman lane  
 suite 8  
 scottsdale, arizona 85251  
 tel. 480.257.3312



**LIVAWAY SUITES**  
 BANNER GATEWAY DR. + GREENFIELD RD.  
 MESA | AZ | 85206

DATE: 01/17/25  
 JOB NO: 2431  
 DRAWN BY: JMY / KH  
 CHECKED BY: JMY  
 REVISIONS: DATE:  
 CITY: 02/19/25  
 SUBMITTED FOR:

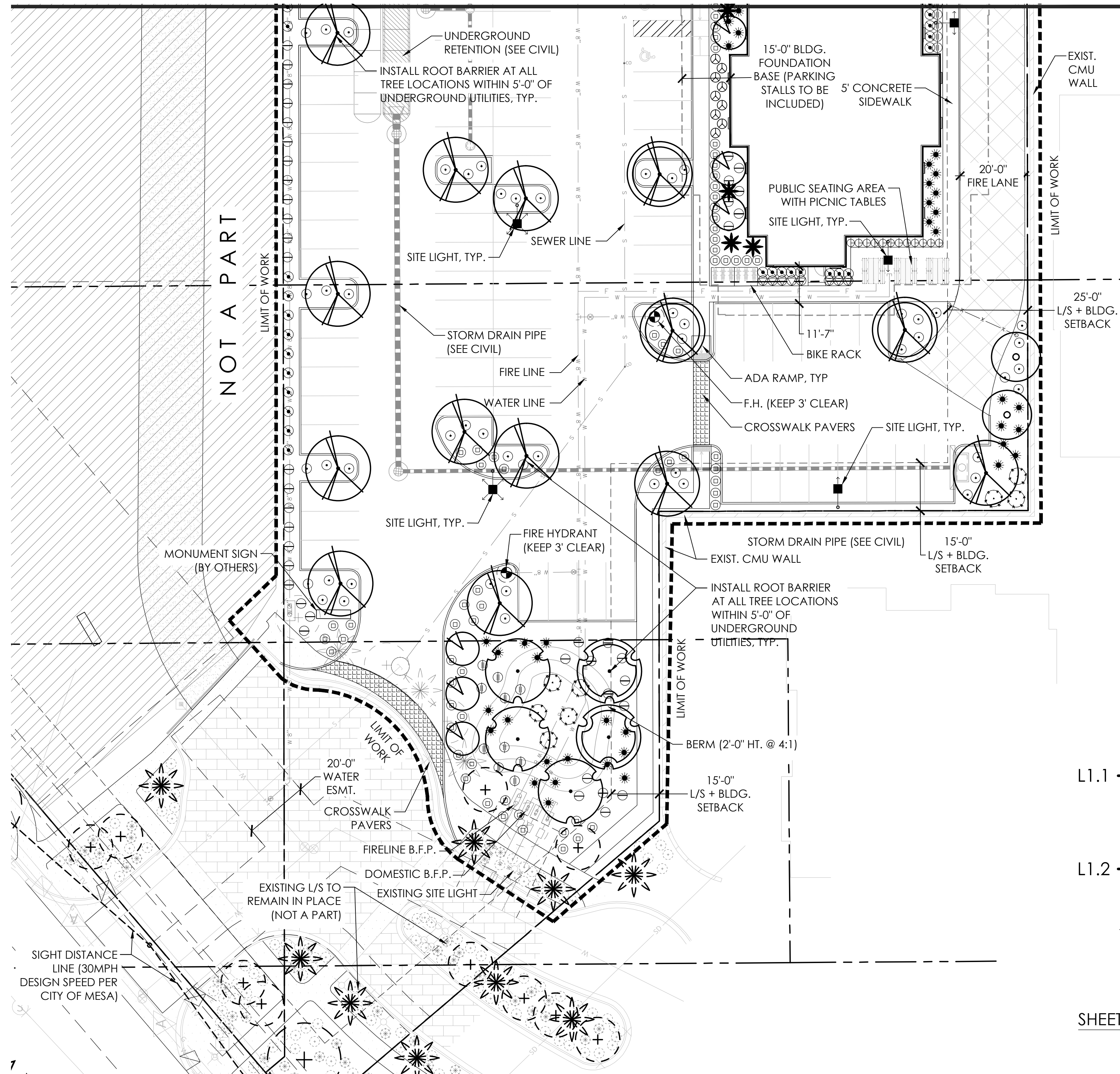
PRELIMINARY REVIEW

SHEET NO.  
**L1.1**  
 3 OF 4

TRACKING NUMBERS: ZON25-00047

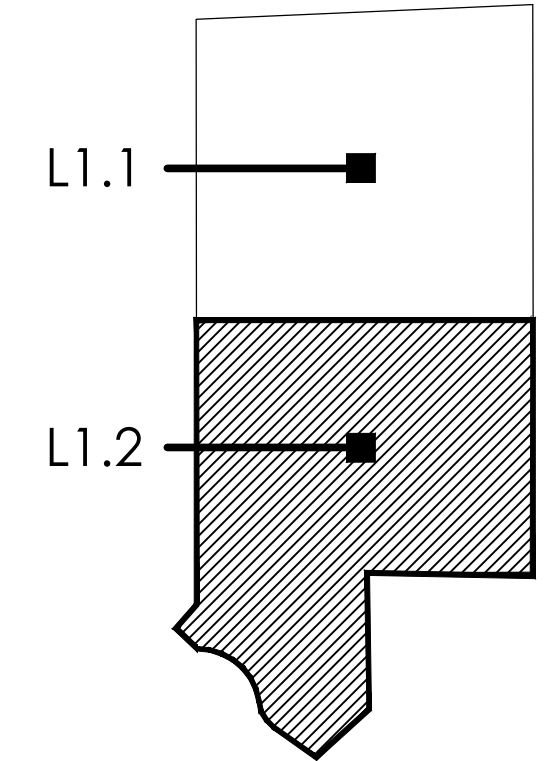
COPYRIGHT © 2025 BY YOUNG | DESIGN | GROUP, LLC. NO ALTERATIONS TO THESE PLANS ARE ALLOWED OTHER THAN AUTHORIZED YOUNG | DESIGN | GROUP EMPLOYEES. THIS DOCUMENT IS THE SOLE PROPERTY OF YOUNG | DESIGN | GROUP, LLC.

MATCHLINE (SEE SHEET L1.1)



**PLANT SCHEDULE**

EXISTING VEGETATION	SIZE / REMARKS	QTY	MATURE TREE CANOPY SIZE
EXISTING TREE (VARIOUS SPECIES)	PRESERVE IN PLACE	PER PLAN	PER PLAN
EXISTING SHRUB, ACCENT + G.COVER	PRESERVE IN PLACE	PER PLAN	PER PLAN
TREES	SIZE / REMARKS	QTY	
CHAMAEROPS HUMILIS MEDITERRANEAN FAN PALM	24" BOX, min. of 3 TRUNKS, MATCHED	7	6' DIA.
EUCALYPTUS PAPUANA GHOST GUM	24" BOX, STANDARD TRUNK, MATCHED	6	15' DIA.
NERIUM SPP. 'RED' RED OLEANDER TREE	25 GAL., STANDARD TRUNK, MATCHED	15	10' DIA.
PHOENIX DACTYLIFERA DATE PALM	15' HT. TO BASE, DIAMOND CUT, MATCHED	3	18' DIA.
PROSOPIS SEEDLESS HYB 'AZT' SEEDLESS HYBRID MESQUITE	24" / 36" BOX, LOW BREAK, MATCHED	2 / 1	20' DIA.
QUERCUS VIRGINIANA 'CATHEDRAL' LIVE OAK	24" / 36" BOX, STANDARD TRUNK, MATCHED	3 / 2	20' DIA.
ULMUS PARVIFOLIA 'TRUE GREEN' ELM	24" / 36" BOX, STANDARD TRUNK, MATCHED	20 / 4	20' DIA.
ACCENTS	SIZE	QTY	
HESPERALOE PARVIFLORA RED YUCCA	5 GAL	20	
MUHLENBERGIA RIGENS DEER GRASS	5 GAL	138	
SHRUBS			
BOUGAINVILLEA 'LAJOLLA' LA JOLLA BOUGAINVILLEA	15 GAL	4	
CALLISTEMON CITRINUS 'LITTLE JOHN' LITTLE JOHN BOTTLEBRUSH	5 GAL	16	
EREMOPHILA GLABRA 'WINTER BLAZE' EREMOPHILA	5 GAL	9	
LEUCOPHYLLUM LAEVIGATUM CHIHUAHUAN SAGE	5 GAL	95	
LEUCOPHYLLUM LANGMANIAE 'RIO BRAVO' SAGE	5 GAL	89	
NERIUM OLEANDER 'P. PINK' PETITE PINK OLEANDER	5 GAL	102	
OLEA EUROPAEA 'LIL OLLIE' DWARF OLIVE	5 GAL	12	
TECOMA STANS 'GOLD STAR' YELLOW BELLS	5 GAL	8	
GROUNDCOVER			
LANTANA 'NEW GOLD' 'NEW GOLD' LANTANA	1 GAL	140	
LANTANA 'DALLAS RED' DALLAS RED LANTANA	1 GAL	16	
INERT MATERIALS			
D.G. DECOMPOSED GRANITE 'PAINTED DESERT' (ROCK PROS USA)	1/2" SCREENED, 2" MIN DEPTH	PER PLAN	

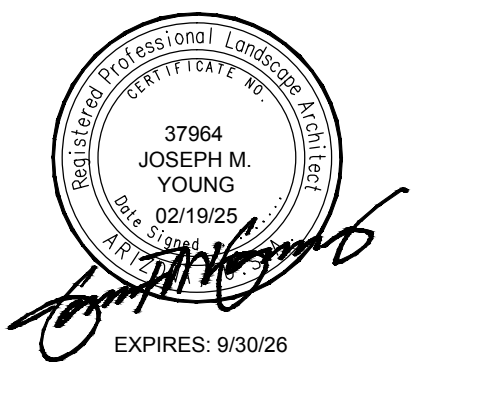


SHEET KEY NOT TO SCALE

**PRELIMINARY LANDSCAPE PLAN**

SCALE: 1" = 20'-0"

Young | design | group  
 Landscape Architecture  
 + Land Planning  
 7234 east shoeman lane  
 suite 8  
 scottsdale, arizona 85251  
 tel. 480.257.3312



**LIVAWAY SUITES**  
 BANNER GATEWAY DR. + GREENFIELD RD.  
 MESA | AZ | 85206

DATE:	01/17/25
JOB NO.:	2431
DRAWN BY:	JMY / KH
CHECKED BY:	JMY
REVISIONS:	DATE:
CITY	02/19/25
SUBMITTED FOR:	

PRELIMINARY REVIEW

SHEET NO.  
**L1.2**  
4 OF 4

TRACKING NUMBERS: ZON25-00047