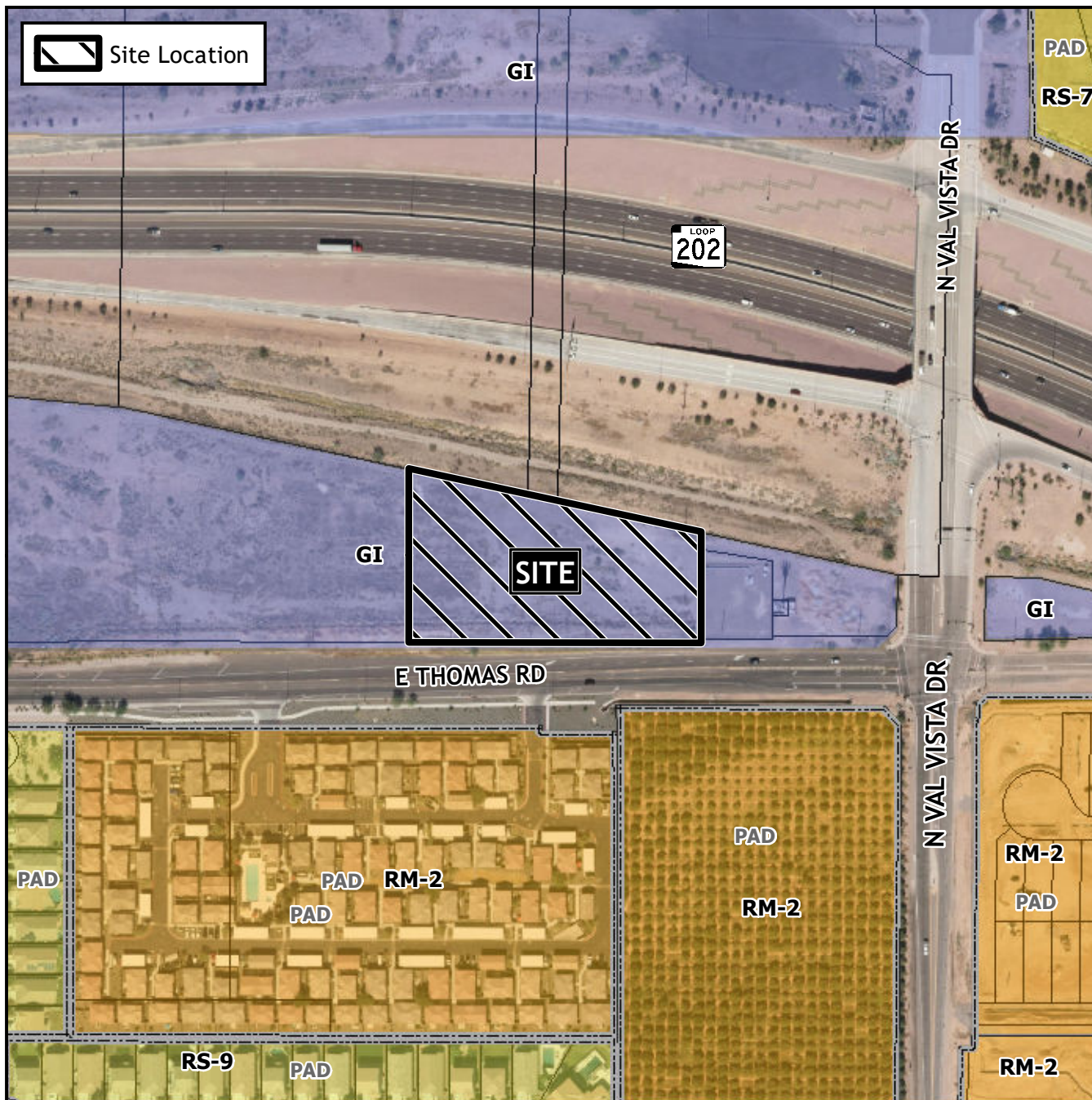


## Design Review Vicinity Map: DRB23-00694



## Case Details

### Case:

DRB23-00694

### Site / Address:

(District 1). Within the 3400 to 3500 blocks of East Thomas Road (north side). Located west of Val Vista Road on the north side of Thomas Road. (2± acres).

### Request:

Design Review for an industrial development.

