

CITY COUNCIL STUDY SESSION | October 24, 2024



**CLIMATE**  
**ACTION PLAN**

For a Sustainable Community

CITY OF MESA

Scott Bouchie, Energy and Sustainability Director  
 Laura Hyneman, Deputy Director, Environmental & Sustainability  
 Stephen Addison, Urban Forest Program Manager



## Stephen Addison

- Master's in Public Administration, University of Arizona
- ISA Certified Arborist & Tree Risk Assessment Qualification
- Hoping to pursue the Municipal Arborist Credential



# Understanding Mesa

Mesa's Tree Board:



## Meeting the Community:



**MESA CHAMBER**  
IMPROVE • PROMOTE • ADVOCATE



treesmatter.org  
planting a resilient future



Arizona Sustainability Alliance



The Nature Conservancy  
Arizona

## Collaborations with Regional Partners:

**ASU** Rob and Melani Walton Sustainability Solutions Service  
Arizona State University



American Forests™



## Strengths

- Collaborative & well-supported tree planting initiative
- Engaged contractor partnerships
- Urban heat mitigation efforts
- Data-driven urban forestry management

## Vulnerabilities

- Long term funding for residents' trees
- Hesitant to embrace desert plants
- Water management challenges
- Public perception and Inconsistent practices

## Opportunities

- Mesa Climate Action Plan funding
- Federal, state, and private funding/grants
- Partnerships, regional collaborations, and cross-training initiatives, student engagement and industry advancement
- Strategic approach
- Exceed canopy goals
- Enhance community engagement

## Constraints

- Environmental issues
- External influences: including HOA regulations, out of state landscape architects, and financial incentives

Objective 1.4		Key Performance Indicators (KPI)
Grow a healthy, resilient, and inclusive urban forest to cool our community.	15% Tree Canopy by 2050	
	Leadership and Governance	Funding per capita
	Mobilize the Community	Number of Projects worked in prioritized census tracts (below 15% canopy, high heat vulnerability)
	Innovative Urban Forestry Practices	Number of trees planted by Mesa
	Diverse Urban Forestry Workforce	Number of Arborists city wide

## Mesa Electric Shade Tree Program:

- Workshop, 9/21
  - Total Registered: 111
  - Total Attendance: 56
- Distribution
  - Total Participants: 56
  - Trees Distributed: 104
- Notes:
  - Natives were unpopular among participants, 2:1 ratio
  - Parking lot distribution was hot, over 105F by 9am

## Mesa Neighborhood Shade Tree Program, Reed Park:

- Workshop, 10/19
  - Total Registered: 160
  - Total Attendance: 77
- Notes:
  - Neighborhood Rep led to strong outreach efforts
    - 400 doorhangers distributed by a group of neighbors
  - Older adults who can care for trees but can not plant trees are asking for planting support



# Trees Are Cool Presents: Get Answers, Get Planting!

We are hosting tree workshops across Mesa on the first Friday of every month.

Join us to learn where to find trees for your home, chat with an arborist, participate in a tree activity, and learn about the Park Ranger Program.

This is a free event and registration is not required.



CITY OF MESA CLIMATE ACTION PLAN: FOR A SUSTAINABLE COMMUNITY

7

[MESAAZ.GOV/CLIMATEACTION](https://mesaaz.gov/climateaction)





## Tree Stewards Program

- A 3-year program
- Arizona Sustainability Alliance and American Forests led program, specific to Mesa
- First Cohort started on Oct 12th
- First Cohort Highlights:
  - Approx 15 individuals
  - Free training about urban forestry, tree care, and maintenance
  - Cohort will plan and plant 100 trees in the City of Mesa
  - Participants receive a certificate from the State (AZDFFM)



# Heritage Park Tree Planting

- Leveraged a community business partner
- Arizona Sustainability Alliance project managed the event
- Parks led the installation of the tree infrastructure to ensure planting success
- Highlights:
  - 50+ community business partner volunteers
  - 60 new, desert native and/or adapted trees
  - Before the event, 4% canopy cover and 16 existing trees
  - Due to the donation, this project was completed at half the cost



# What are we doing with data?

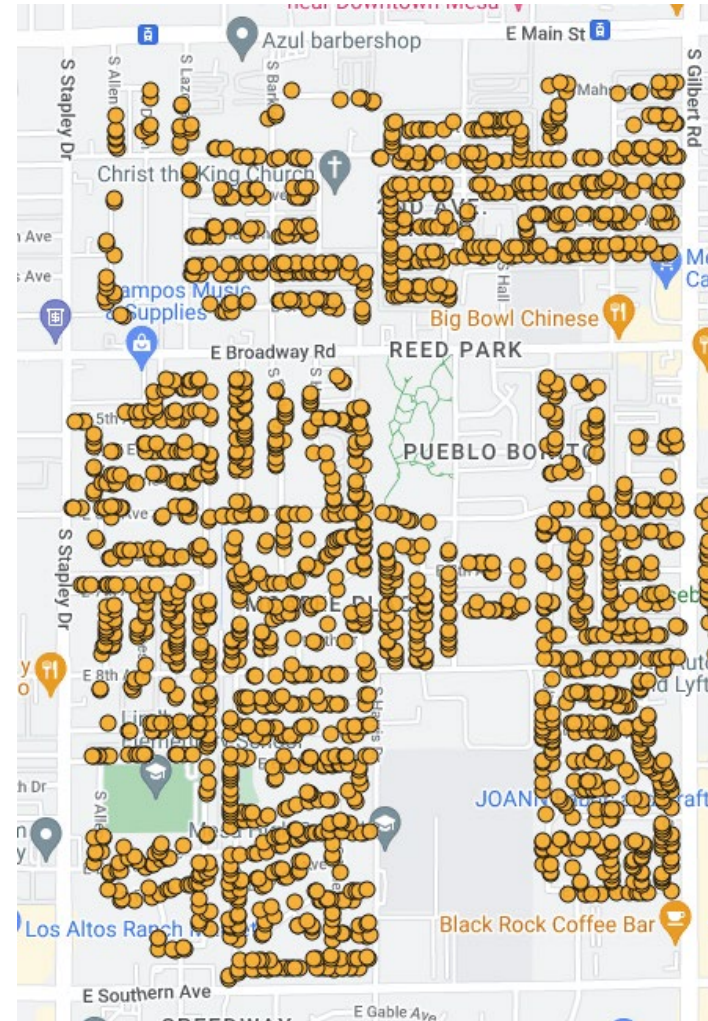
- Collecting forecasted canopy data in proposed developments (Planning)
- Cool Routes to Parks (Parks)
  - A park-by-park study by Parks department of incorporating shaded walkways and trees into and around our parks
- Developing tree planting plans alongside this research and data
- A Case Study to understand “what does 15% canopy cover look like?”

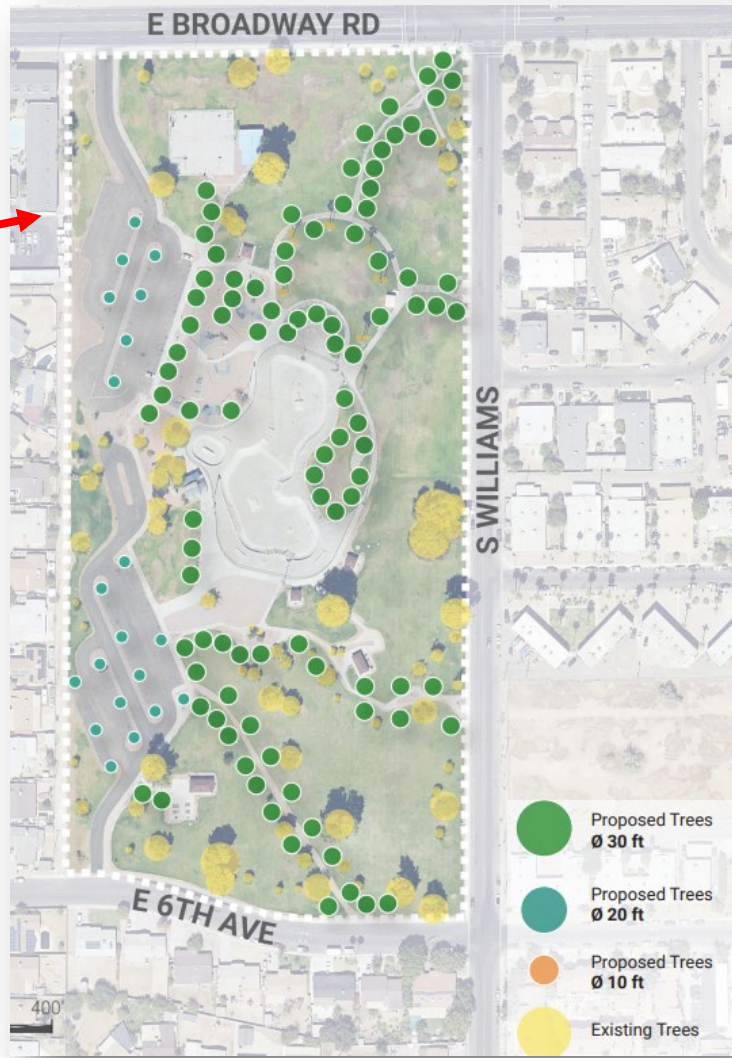


**Reed Park**  
**9.3% Tree Canopy Cover (American Forests)**  
**Public Trees**



**Vacant sites within Census Tract**  
**1,878 vacant sites at single family homes, identified by arborist**





**Parcel Area: 821,920 SF**  
**Building Footprint: 750 SF**  
**Existing Shade Area: 6%**  
**Recommended Shade Area: 123,288 SF**  
**(15%)**  
**Achieve 15%: Add new 120 trees**  
**Cost estimate 2024: \$90,000**

# Questions?



CITY OF MESA CLIMATE ACTION PLAN: FOR A SUSTAINABLE COMMUNITY