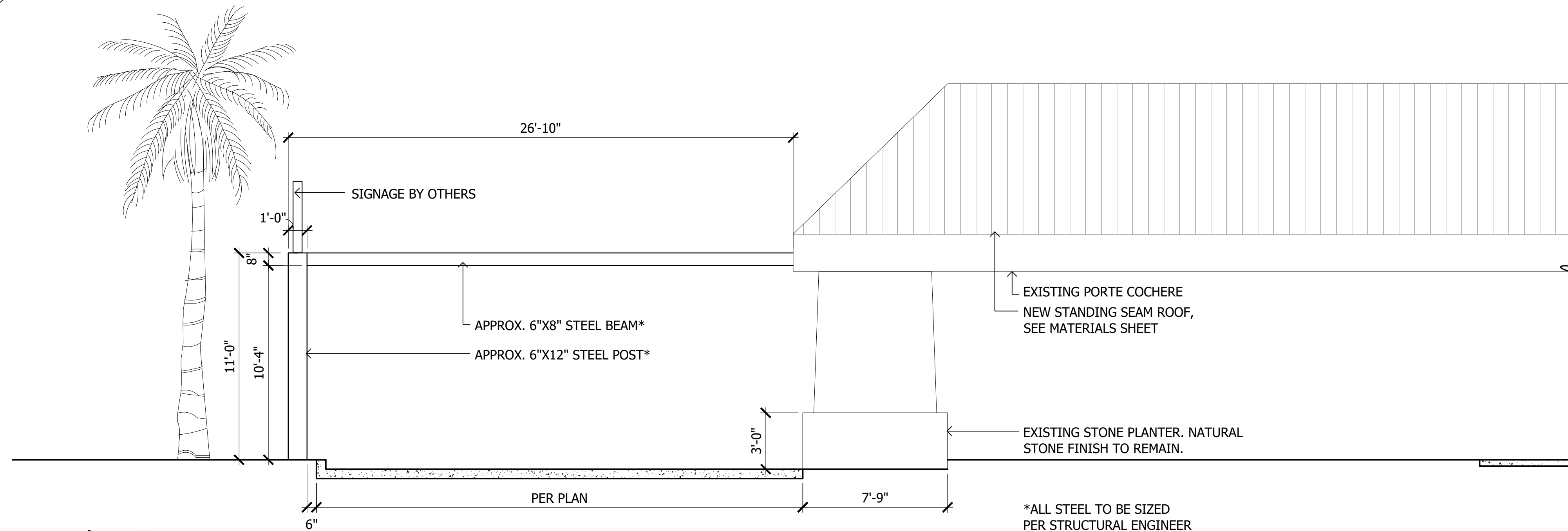


1 North Elevation (From Main Street)
SCALE: 1/4"=1'-0"

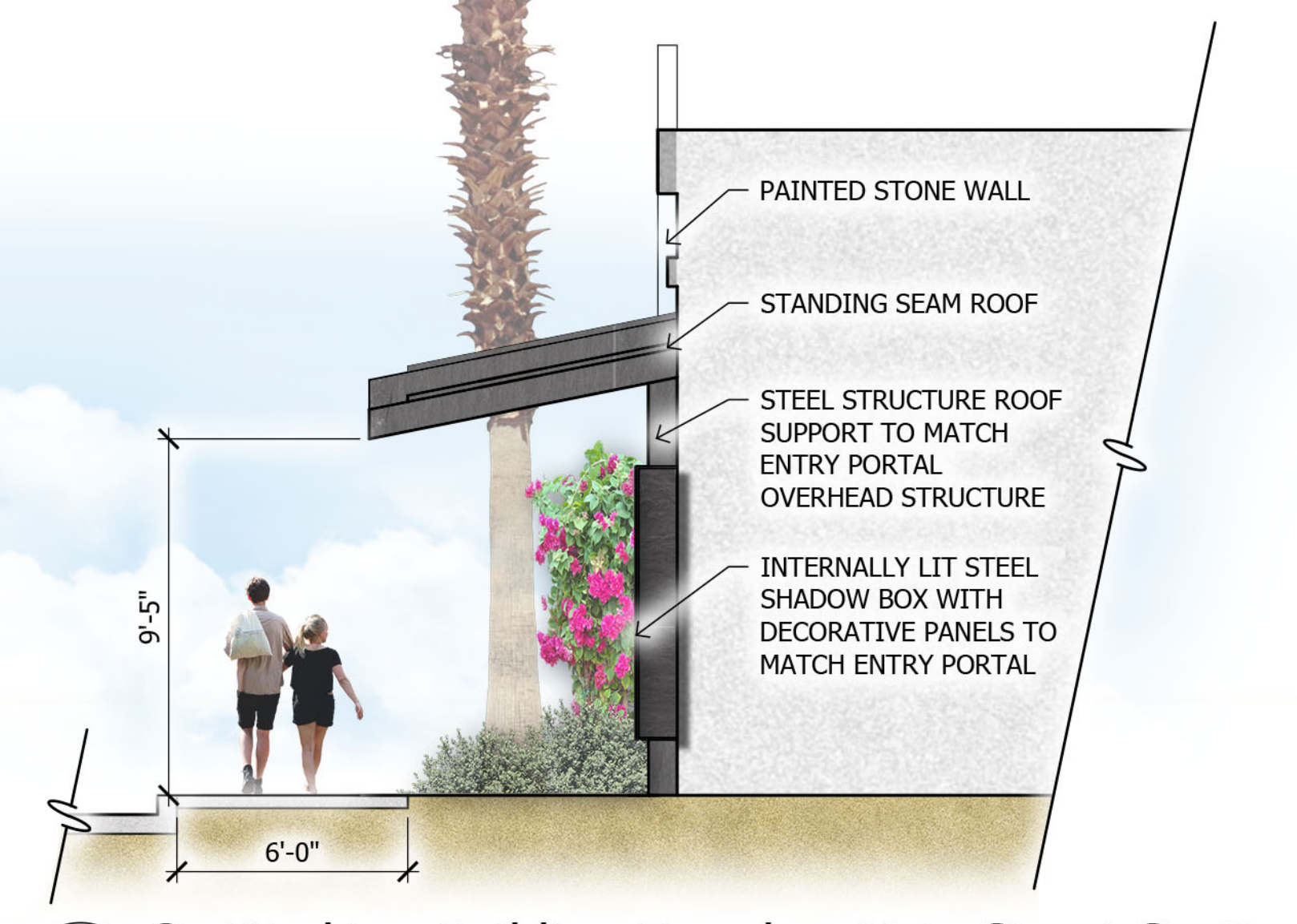


2 East Elevation
SCALE: 1/4"=1'-0"

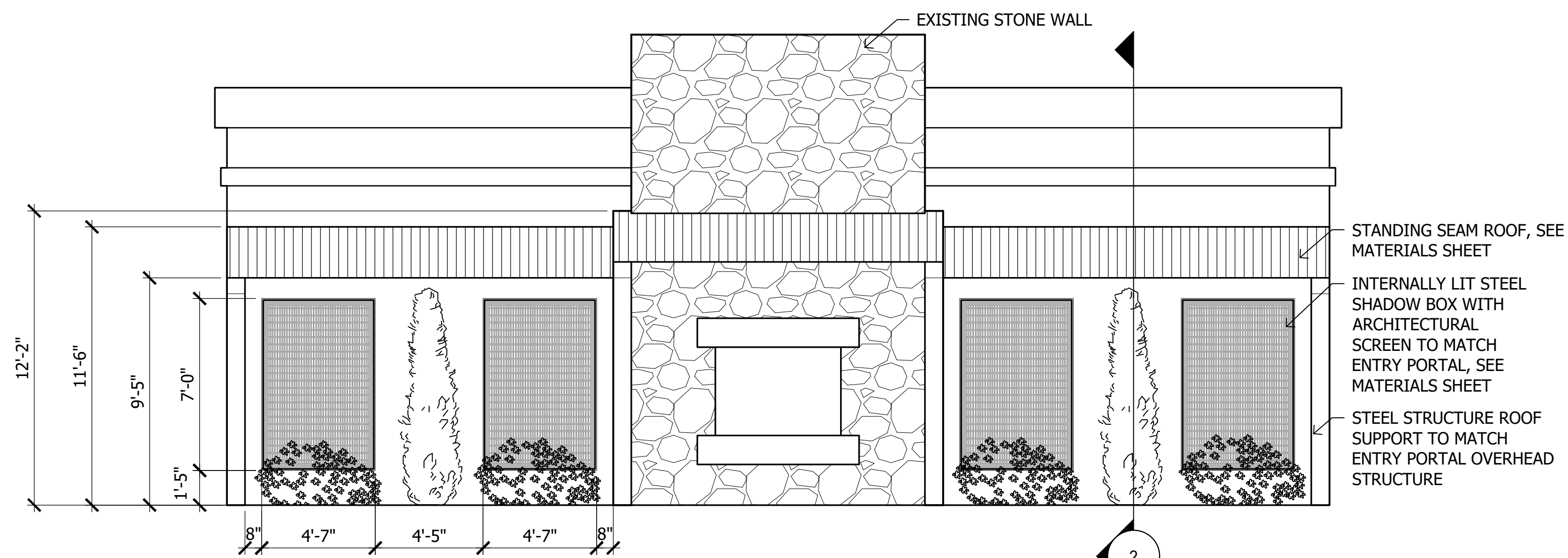




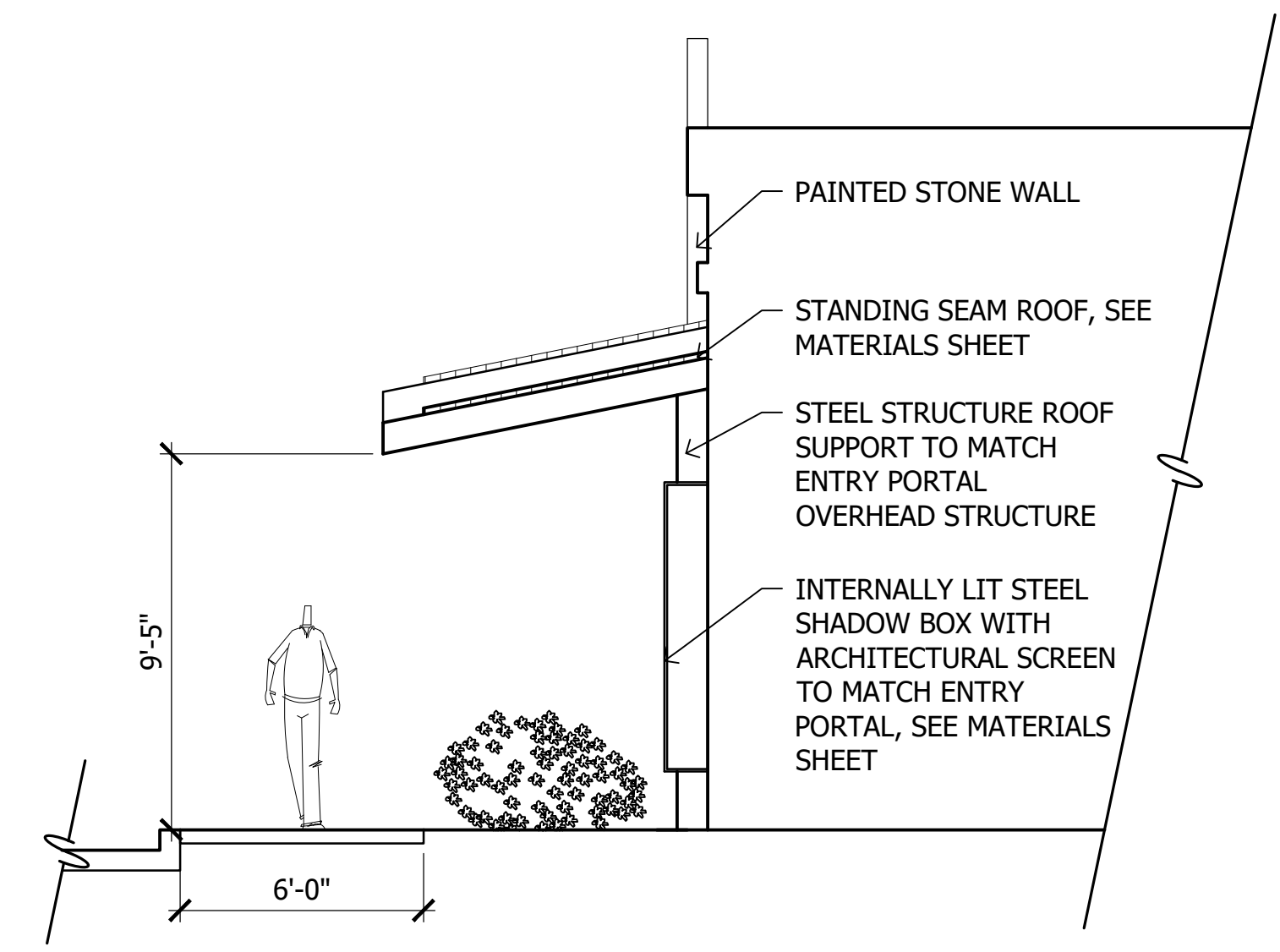
1 Co-Working Building Facade - Main Street Elevation
SCALE: 1/4"=1'-0"



2 Co-Working Building Facade - Main Street Section
SCALE: 1/4"=1'-0"



1 Co-Working Building Facade - Main Street Elevation
SCALE: 1/4"=1'-0"



2 Co-Working Building Facade - Main Street Section
SCALE: 1/4"=1'-0"

VIVO

LIVING



Existing



Proposed

Brand color palette



VIVO

LIVING



Existing



Proposed

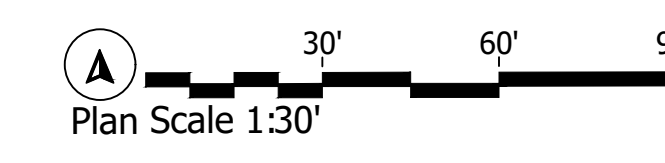
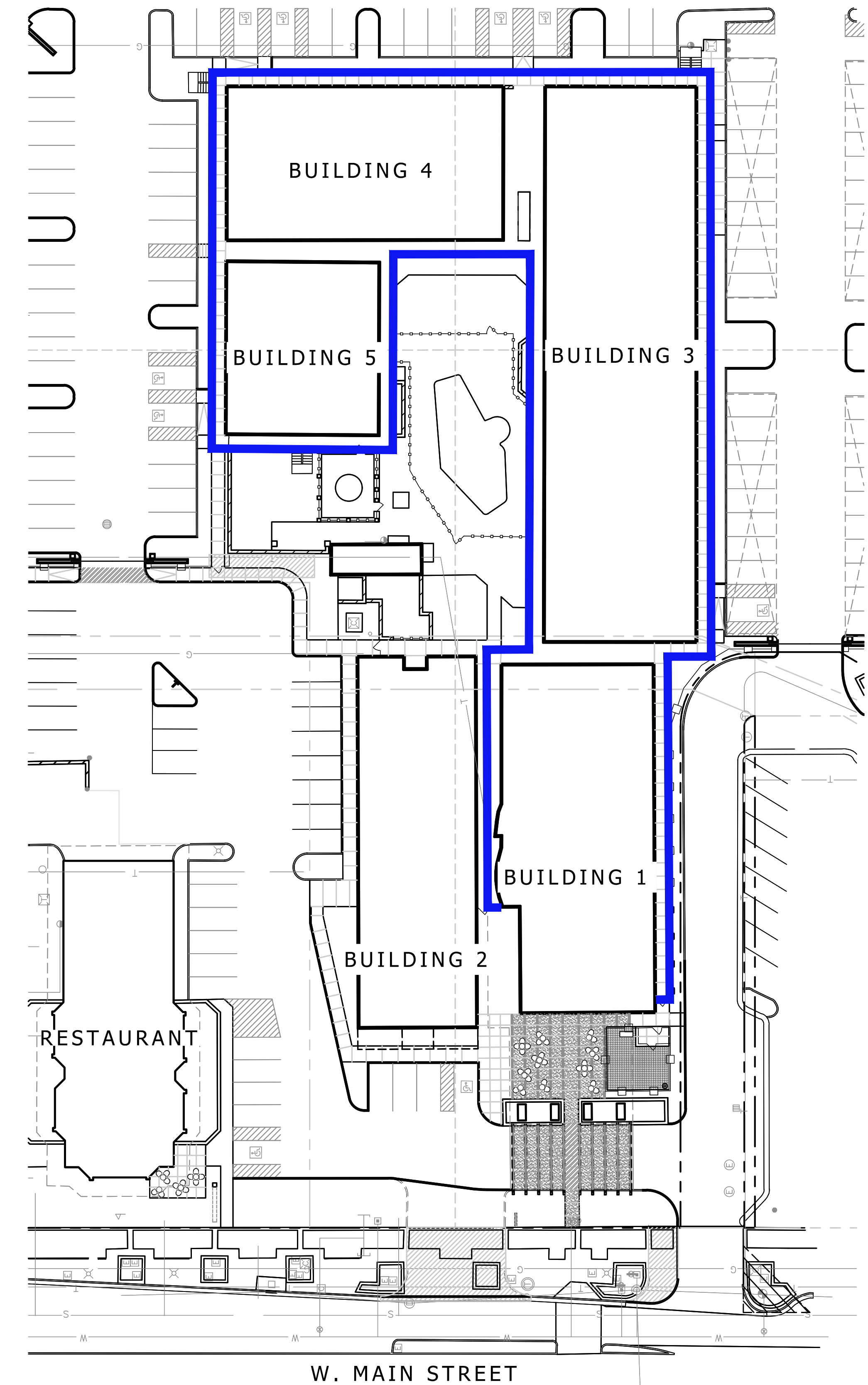
Brand color palette



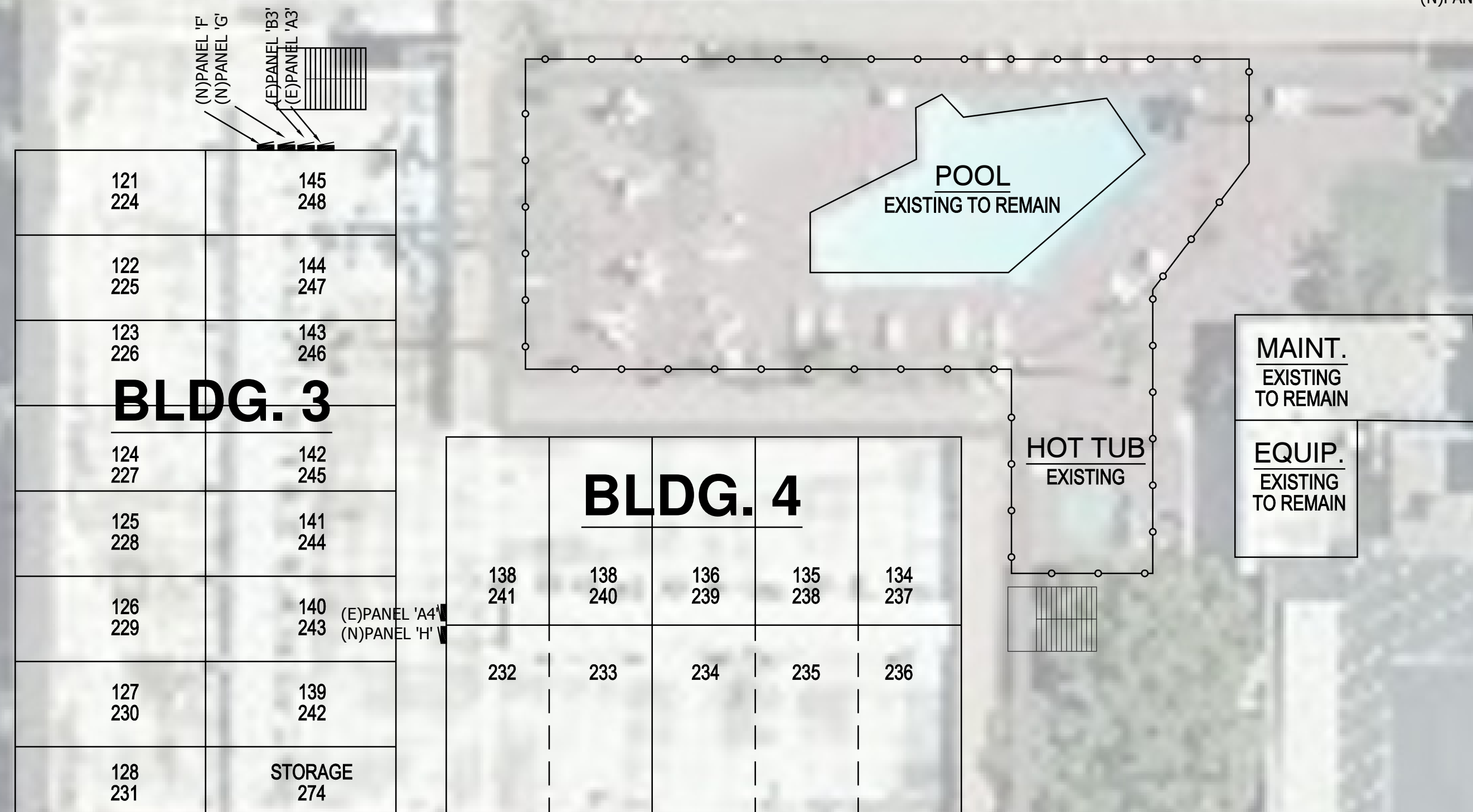
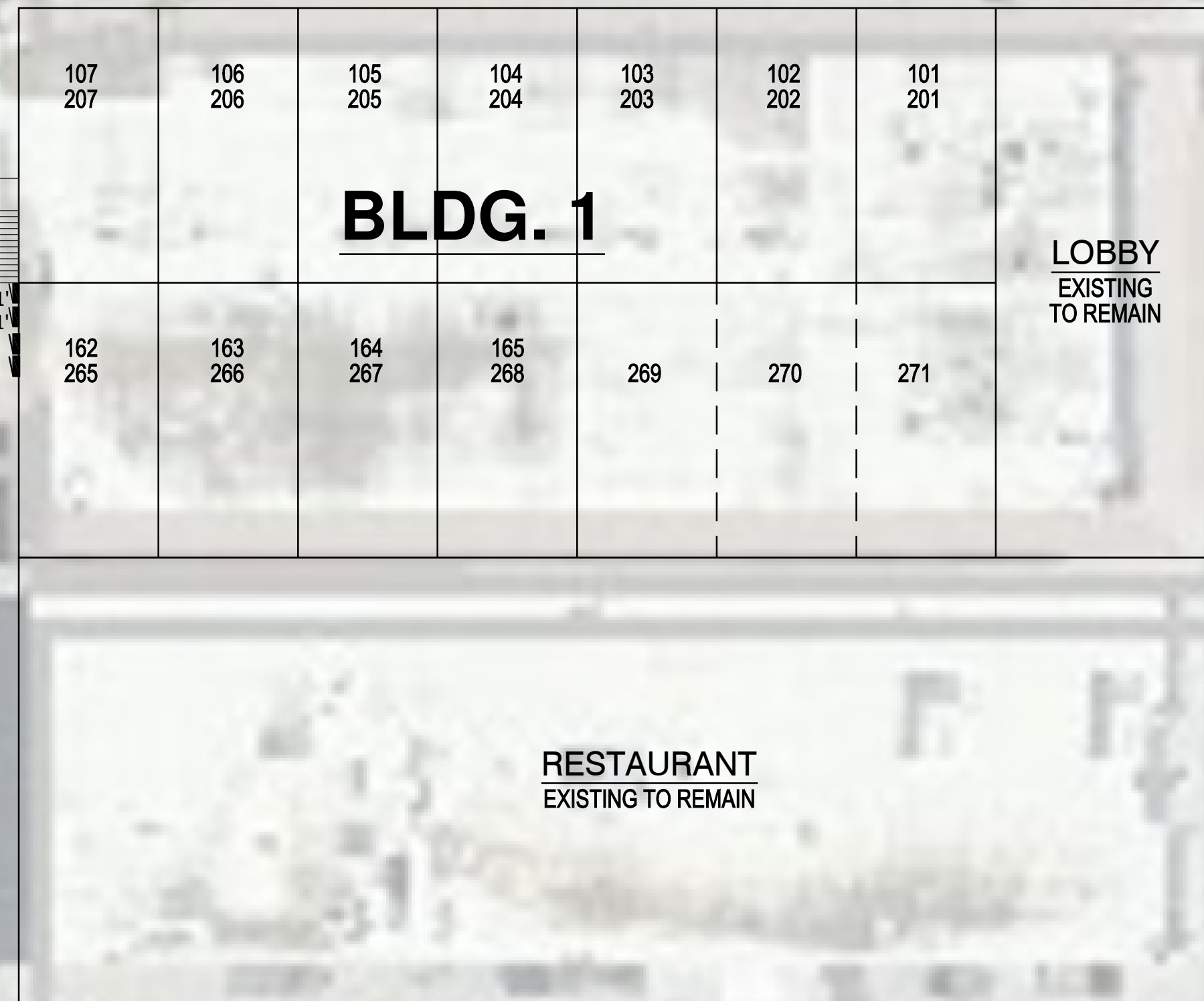
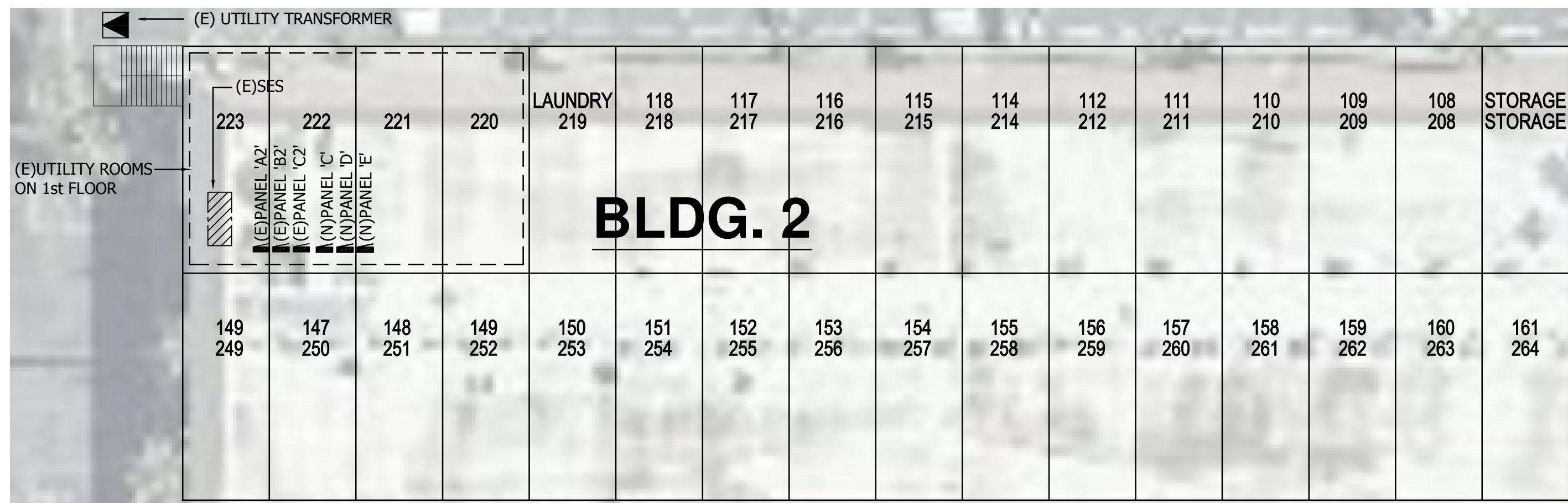


ARCHITECTURAL SCREEN MATERIAL PLACED ON EXISTING 2ND STORY HANDRAILS ON THE RESIDENTIAL BUILDINGS. FINAL PAINT COLOR TO BE COORDINATED WITH ARCHITECTURAL COLOR PALETTE. SCREEN MATERIAL WILL MATCH MATERIALS USED AT ENTRY AND ON BUILDING 2.

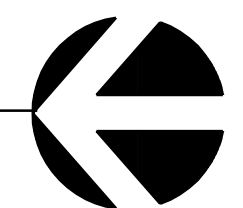
1 Concept Handrail Illustration
SCALE: NTS



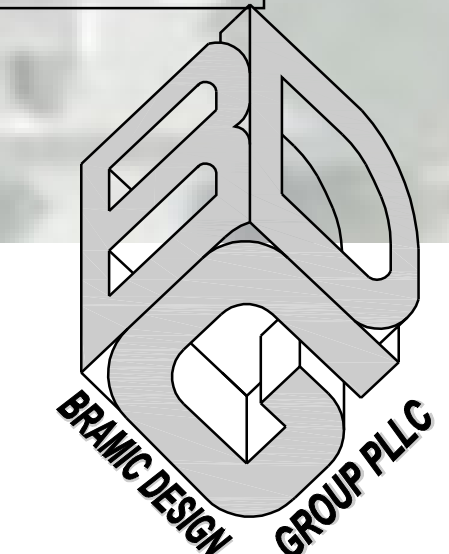
SYMBOL	DESCRIPTION	QUANTITY
	EXISTING HANDRAIL LOCATIONS	1,159 LF



1 SITE ELECTRICAL PLAN
SCALE: 3/32"=1'-0"



PMT20-10760 - APPROVED

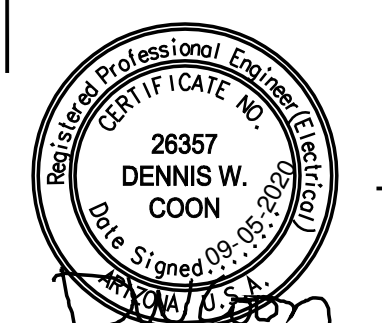


9516 E. VENTASO CIRCLE
TUCSON, AZ 85715
PHONE: (520) 401-9183

PROJECT: 20-580
DATE: 9/5/2020
DRAWN: IYP/DWC
CHECKED: DWC

ENGINEERED DESIGN GROUP
EDG-WEST, INC.
CONSULTING ELECTRICAL ENGINEERS
954 N. ALVERNON WAY, TUCSON, AZ 85711
PH: (520) 881-8896 FAX: (520) 881-5647
Web Site: www.edg-cc.com #20w-086

THESE PLANS ARE THE SOLE POSSESSION OF ENGINEERED DESIGN GROUP, INC. AND ARE COPYRIGHTED ©. THEY ARE NOT TO BE REPRODUCED WITHOUT THE EXPRESSED WRITTEN PERMISSION OF EDG WEST, INC.
THIS DRAWING IS PRELIMINARY. NOT FOR CONSTRUCTION UNLESS SEALED AND SIGNED BY A REGISTERED ENGINEER.



COPYRIGHT, BRAMIC DESIGN GROUP, PLLC
DO NOT SCALE DRAWING

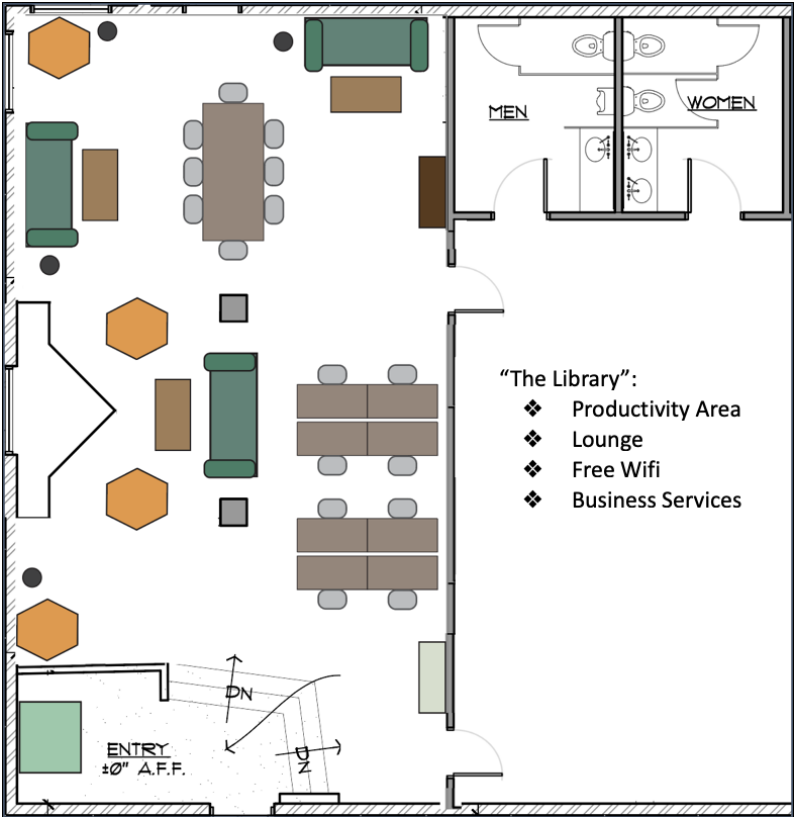
Remodeling for
Vivo Mesa Hotel Rooms
250 W. Main Street
Mesa, Arizona 85201

SITE ELECTRICAL PLAN

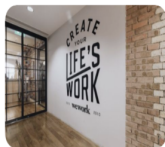
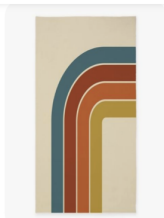
SHEET: **E2.0**

W MAIN ST

Proposed Co-Working Area



- "The Library":**
- ❖ Productivity Area
 - ❖ Lounge
 - ❖ Free Wifi
 - ❖ Business Services



Proposed Game Room & Lounge Area



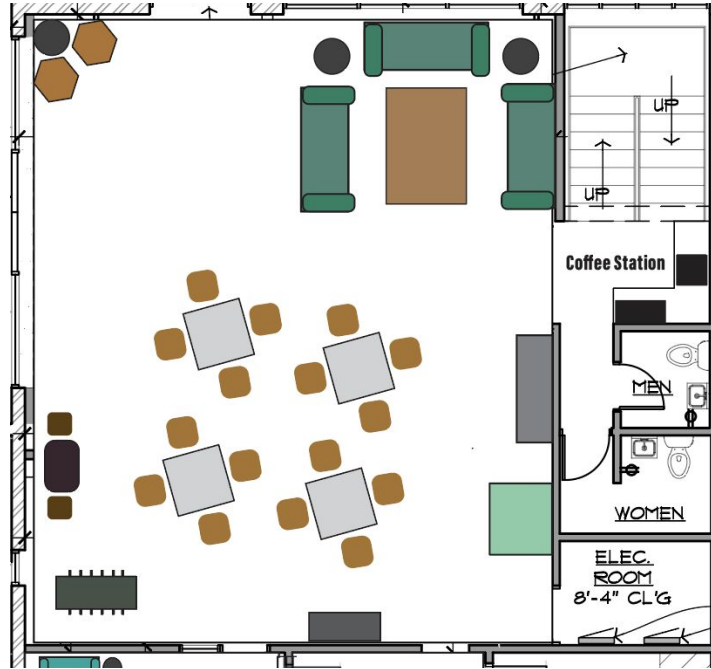
Seating for guests and residents



Vintage Arcade Game



Foosball Table

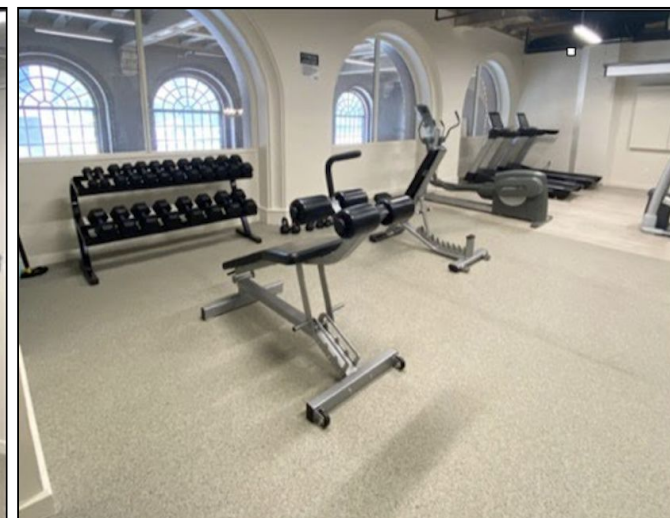


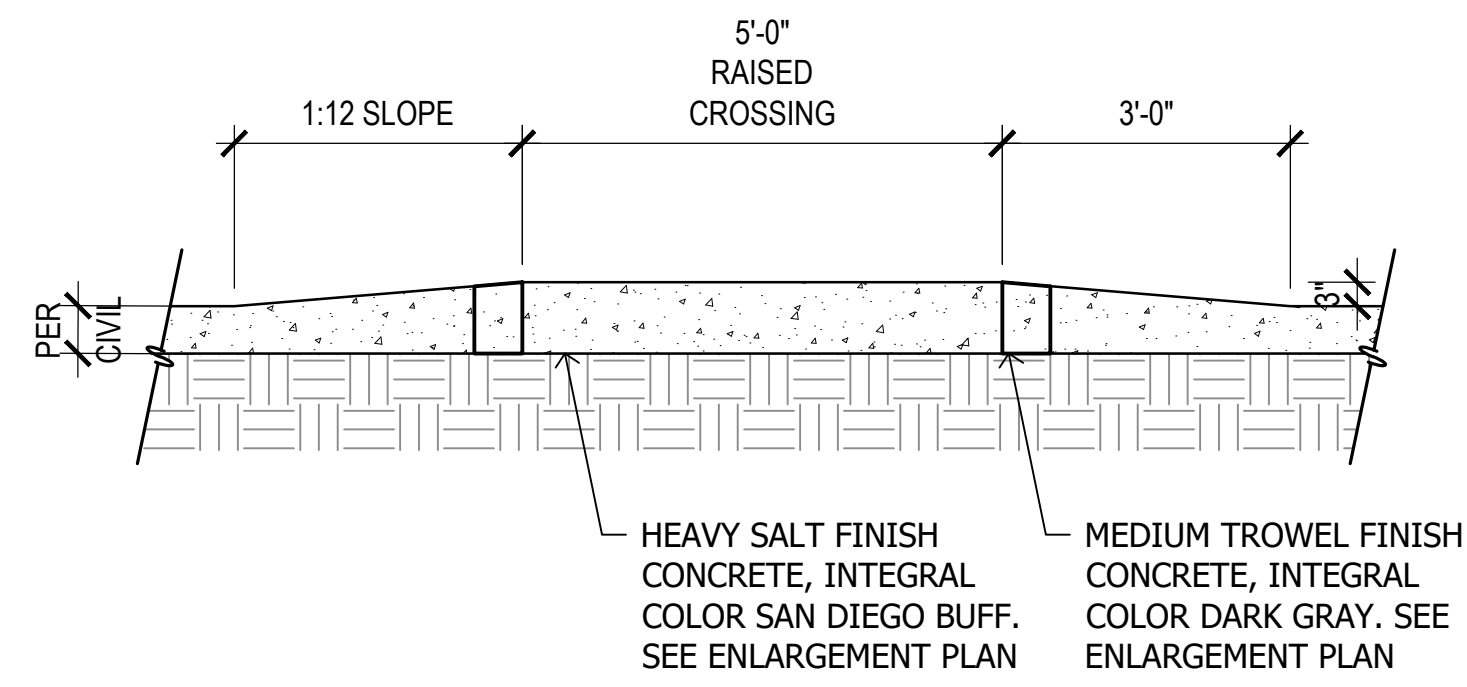
Coffee Station Inspiration

Fitness center layout

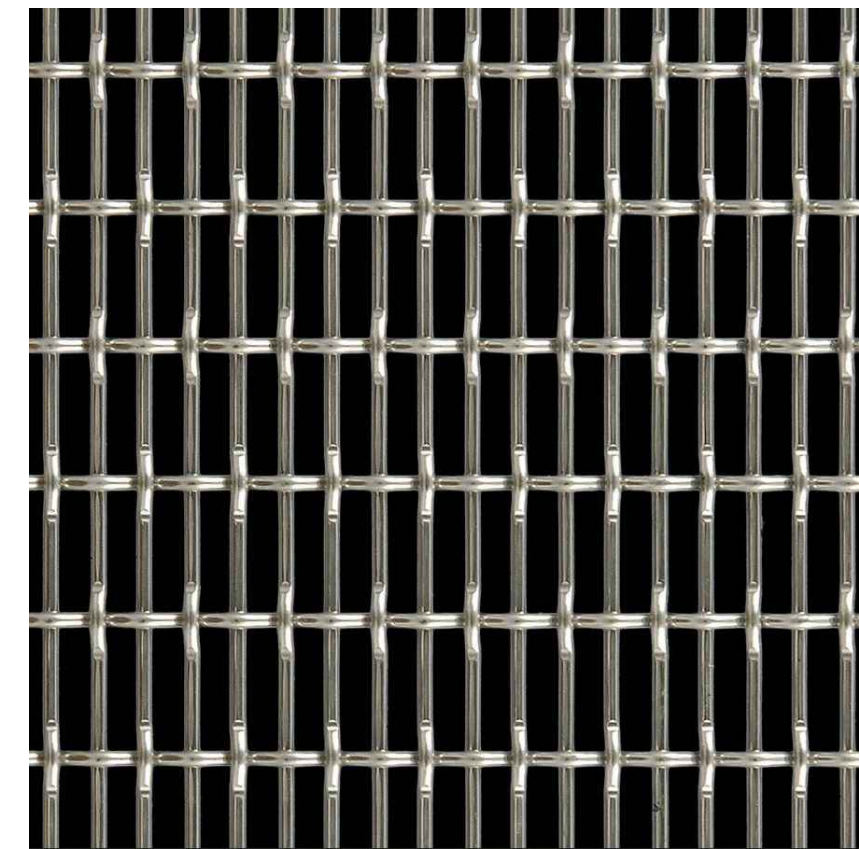


Example photos from Vivo Ogden





1 Pedestrian Walkway Section
SCALE: 1/2"=1'-0"



- NOTES*:
- MANU: MCNICHOLS
 - MATERIAL: PAINTED STEEL
 - COLOR: TBD BASED ON BUILDING & ACCENT COLORS
 - PATTERN OPENNESS: 58%

*FINAL SIZE/PATTERN DENSITY OF STEEL PANEL TO BE DETERMINED BASED ON STRUCTURAL ENGINEERING REQUIREMENTS

*PANEL TO MEET ADA & APPLICABLE ARCHITECTURE REQUIREMENTS FOR LIFE SAFETY

*SEE ENTRY ELEVATIONS, WALL DETAILS, AND CO-WORKING BUILDING FACADE SHEETS FOR APPLICATION

2 Architectural Screen
SCALE: NTS

- NOTES:
- MANU: DAVIS COLORS
 - DARKER BAND, MEDIUM TROWEL FINISH
 - SEE ENTRY ENLARGEMENT SHEET

Dark Gray (Carbon)
*8084

- NOTES:
- MANU: DAVIS COLORS
 - HEAVY SALT FINISH
 - SEE ENTRY ENLARGEMENT SHEET

San Diego Buff 5237

3 Porte Cochere & Drive Entry Paving
SCALE: NTA



4 Synthetic Lawn
SCALE: NTA



5 Standing Seam Roof
SCALE: NTS



6 Dogi-Pot
SCALE: NTS



- NOTES:
- PRODUCT NAME: AASON STEEL GARDEN BENCH
 - MANU: RED BARREL STUDIO
 - MATERIAL: STEEL
 - COLOR: BLACK
 - OVERALL DIMENSIONS: 32.5" H x 50.5" W x 25" D
 - SEAT DIMENSIONS: 17" H x 50.5" W x 16.5" D
 - OVERALL PRODUCT WEIGHT: 28.5 lb.

7 Dog Park Bench
SCALE: NTS



8 Parking Canopy
SCALE: NTS



- NOTES:
- PRODUCT NAME: POLYTEC 42 GALLON SQUARE DARK BLUE WASTE CONTAINER WITH DOME LID
 - MANU: COMMERCIAL ZONE
 - MATERIAL: POLYETHYLENE
 - COLOR: BLUE
 - OVERALL DIMENSIONS: 41.75" H x 18.5" W x 18.5" D
 - CAPACITY: 42 GAL

9 Trash Can
SCALE: NTS



- NOTES:
- PRODUCT NAME: 5 PIECE METAL OUTDOOR DINING SET WITH WOOD-LIKE DINING TABLE
 - MANU: PHI VILLA
 - MATERIAL: TABLE - PREMIUM PVC, FRAME - POWDER COATED MATERIAL, CHAIR - METAL STEEL
 - COLOR: TABLE TOP - BROWN, TABLE FRAME AND CHAIRS - BLACK
 - DIMENSIONS: TABLE - L 37" x W 37" x H 28", 1.57" UMBRELLA HOLE; CHAIRS - L 25.2" x W 22.8" x H 35", SEAT HEIGHT - 17"

10 Patio Dining Table and Chairs with Umbrella Option (Outdoor Dining & Porte Cochere)
SCALE: NTS

- NOTES:
- PRODUCT NAME: OUTDOOR/INDOOR SEAT CUSHION 2-PC SET
 - MANU: SONOMA GOODS FOR LIFE
 - COVER MATERIAL: PRINTED POLYESTER
 - FILL MATERIAL: BONDED POLYESTER INSERT
 - COLOR: GRAY
 - DIMENSIONS: 20" W x 18" D x 3" THICK



- NOTES:
- PRODUCT NAME: MEGAN 9' MARKET UMBRELLA
 - MANU: ARLMONT & CO.
 - CANOPY MATERIAL: POLYESTER
 - POLE MATERIAL: POWDER-COATED ALUMINUM
 - COLOR: NAVY BLUE
 - OPEN UMBRELLA: 9' W x 9' D
 - POLE HEIGHT: 7'9 19/32"
 - POLE DIAMETER: 1.5"



- NOTES:
- PRODUCT NAME: ASHMORE RESIN FREE-STANDING UMBRELLA BASE
 - MANU: LARK MANOR
 - MATERIAL: RESIN
 - COLOR: BLACK/GREY
 - DIMENSIONS: 2 5/8" H x 1' 7 3/8" W x 1' 7 3/8" D
 - BASE DIAMETER: 1' 7 3/8"

