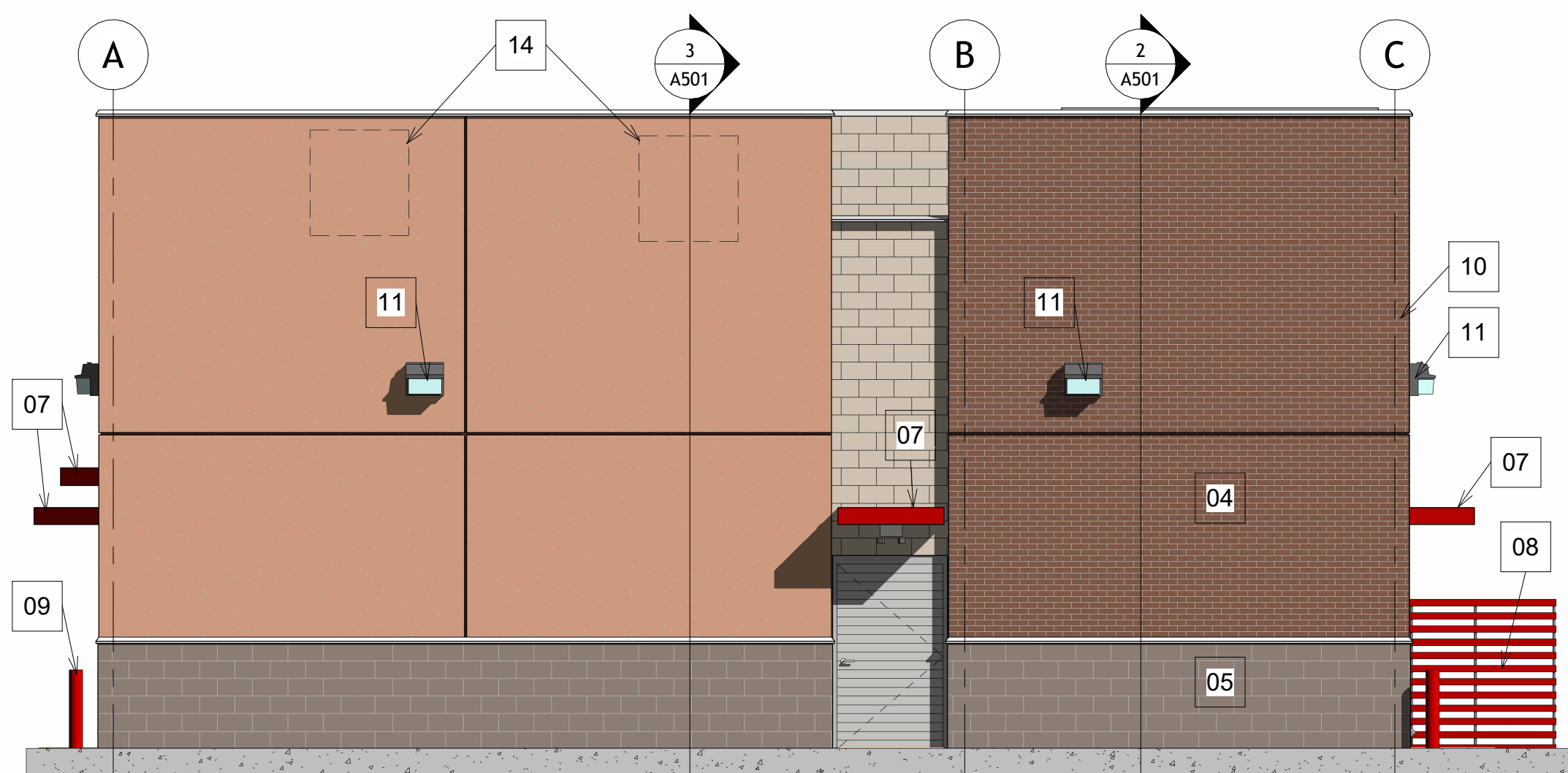
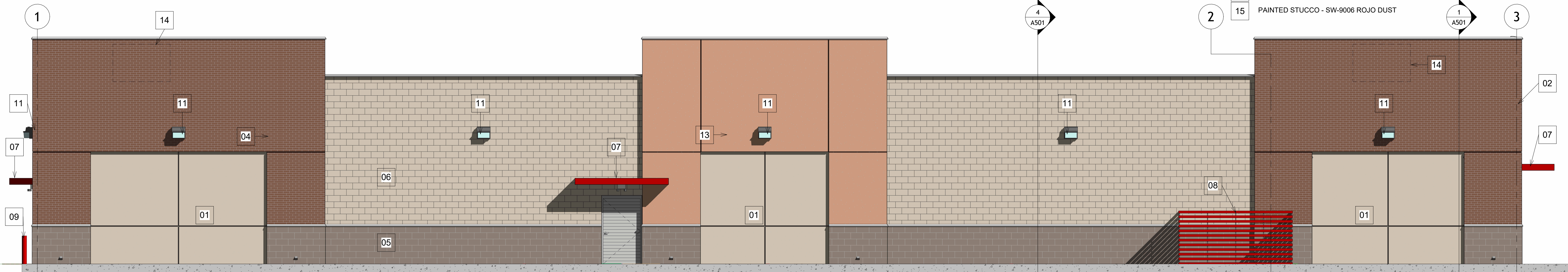


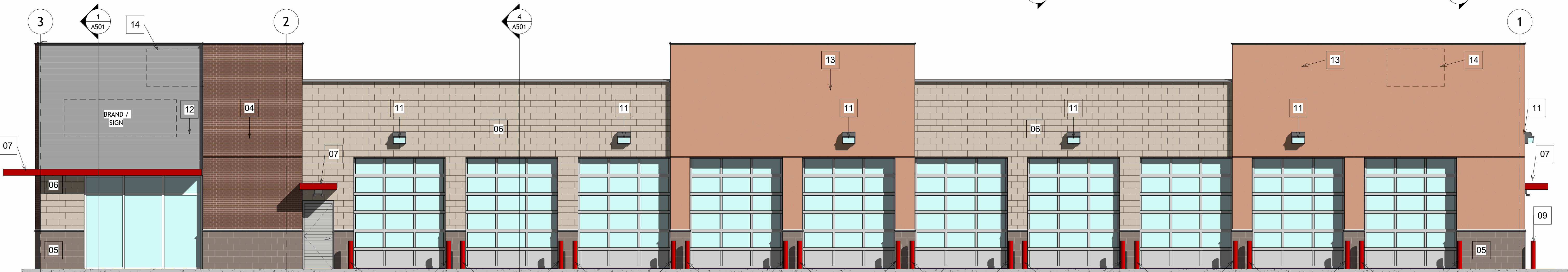
1 South Architectural Building Elevation
3/16" = 1'-0"



2 North Architectural Building Elevation
3/16" = 1'-0"



4 West Architectural Building Elevation
3/16" = 1'-0"



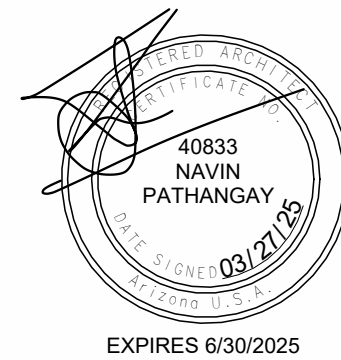
3 East Architectural Building Elevation
3/16" = 1'-0"

LEGEND - FINISHES / SURFACES					
LEGEND	DESCRIPTION	N	S	E	W
		1,176.5 s.f.	1,183.4 s.f.	3,514.6 s.f.	3,525.5 s.f.
	METAL (SIGN)	0 SF 0%	482.2 SF 40.7%	233.3 SF 6.6%	0 SF 0%
	BRICK - VENEER	345.8 SF 29.3%	260.9 SF 22.0%	209.2 SF 5.9%	909.8 SF 25.8%
	CMU, SPLITFACE, SW-9173	55.9 SF 4.7%	57.6 SF 4.8%	716.8 SF 20.3%	1,140.4 SF 32.3%
	CMU, SPLITFACE, SW-7025	182.0 SF 15.4%	93.0 SF 7.8%	177.1 SF 5.0%	424.4 SF 12.0%
	PAINTED STUCCO	550.3 SF 46.7%	0 SF 0%	228.6 SF 6.5%	996.5 SF 28.2%

NOTES:
- OPENINGS, GLAZING AND DOORS AREAS ARE NOT INCLUDED AS PART OF FINISHES.

KEYNOTES - ELEVATIONS

- 01 PAINTED STUCCO - SW9173 SHITAKE OR SIMILAR
- 02 PAINTED STUCCO - SW7025 BACKDROP OR SIMILAR
- 03 PAINTED STUCCO - SHERWIN WILLIAMS: CUSTOM BRAND COLOR
- 04 WALL PANEL - BRICK
- 05 CONCRETE MASONRY UNIT (CMU) - SPLITFACE, COLOR SW7025 OR SIMILAR
- 06 CONCRETE MASONRY UNIT (CMU) - SPLITFACE, COLOR SW9173 OR SIMILAR
- 07 AWNING
- 08 METAL SCREEN
- 09 BOLLARD
- 10 DOWNSPOUT (INSIDE WALL)
- 11 LIGHTING FIXTURE
- 12 METAL PANEL - BRAND AND LOGO PER OWNER
- 13 PAINTED STUCCO - SW-0039 MELLOW MAUVE
- 14 HVAC UNITS PROJECTION
- 15 PAINTED STUCCO - SW-9006 ROJO DUST



Consultant ID

Sun Devil Auto
Mesa, AZ 85208

Revision

Project Number

2025.05

Date

Issue Date

Drawn By

RM

Reviewed By

NP

Sheet Title

Colored
Elevations

A402

Scale

As indicated



2 3D View 2



1 3D View 1



- GENERAL NOTES - FINISHES & MATERIALS**
- COLOR PALETTE CONSISTENCY**
THE PROPOSED BUILDING'S EXTERIOR COLORS ARE SELECTED TO HARMONIZE WITH THE PREDOMINANT HUES OF NEIGHBORING STRUCTURES. THIS APPROACH ALIGNS WITH THE CITY OF MESA'S RECOMMENDATION THAT "EXTERIOR BUILDING COLORS SHOULD BE COMPATIBLE WITH THE SURROUNDING NEIGHBORHOOD SETTING AND SHOULD BE IN KEEPING WITH THE GEOGRAPHIC AND CLIMATIC CONDITIONS SPECIFIC TO MESA."
 - USE OF EARTH TONES AND ACCENTS**
IN ACCORDANCE WITH MESA'S GUIDELINES, THE DESIGN INCORPORATES EARTH TONE COLORS TRADITIONALLY USED IN THE DESERT SOUTHWEST. DEEP, RICH ACCENT COLORS ARE UTILIZED SPARINGLY TO ENHANCE ARCHITECTURAL DETAILS, AVOIDING THE USE OF PALE OR OVERLY BRIGHT PALETTES.
 - MATERIAL AND FINISH SELECTION**
EXTERIOR MATERIALS AND FINISHES ARE CHOSEN FOR THEIR DURABILITY IN EXTREME HEAT AND HIGH SUN EXPOSURE, AS ADVISED BY THE CITY'S STANDARDS. THIS ENSURES LONGEVITY AND MAINTAINS AESTHETIC CONSISTENCY WITH EXISTING BUILDINGS.
 - ARCHITECTURAL DETAILING AND COLOR TRANSITIONS**
CHANGES IN COLOR ON THE BUILDING FACADE ARE ACCOMPANIED BY CHANGES IN PLANE OR SEPARATED BY ARCHITECTURAL ELEMENTS, SUCH AS ENHANCED DETAILS OR FACADE ELEMENTS, TO CREATE VISUAL INTEREST AND COMPLY WITH MESA'S DESIGN RECOMMENDATIONS.
 - VISUAL IMPACT AND NEIGHBORHOOD CHARACTER**
THE PROPOSED BUILDING'S COLOR SCHEME AND MATERIALS WERE SELECTED TO INTEGRATE SEAMLESSLY WITH THE EXISTING ENVIRONMENT, PRESERVING THE AREA'S CHARACTER AND ADHERING TO THE CITY'S EMPHASIS ON COMPATIBILITY WITH THE SURROUNDING NEIGHBORHOOD SETTING.



1 3D View 3



Consultant ID

Sun Devil Auto

Mesa, AZ 85208

Revision

Project Number

2025.05

Date

Issue Date

Drawn By

RM

Reviewed By

NP

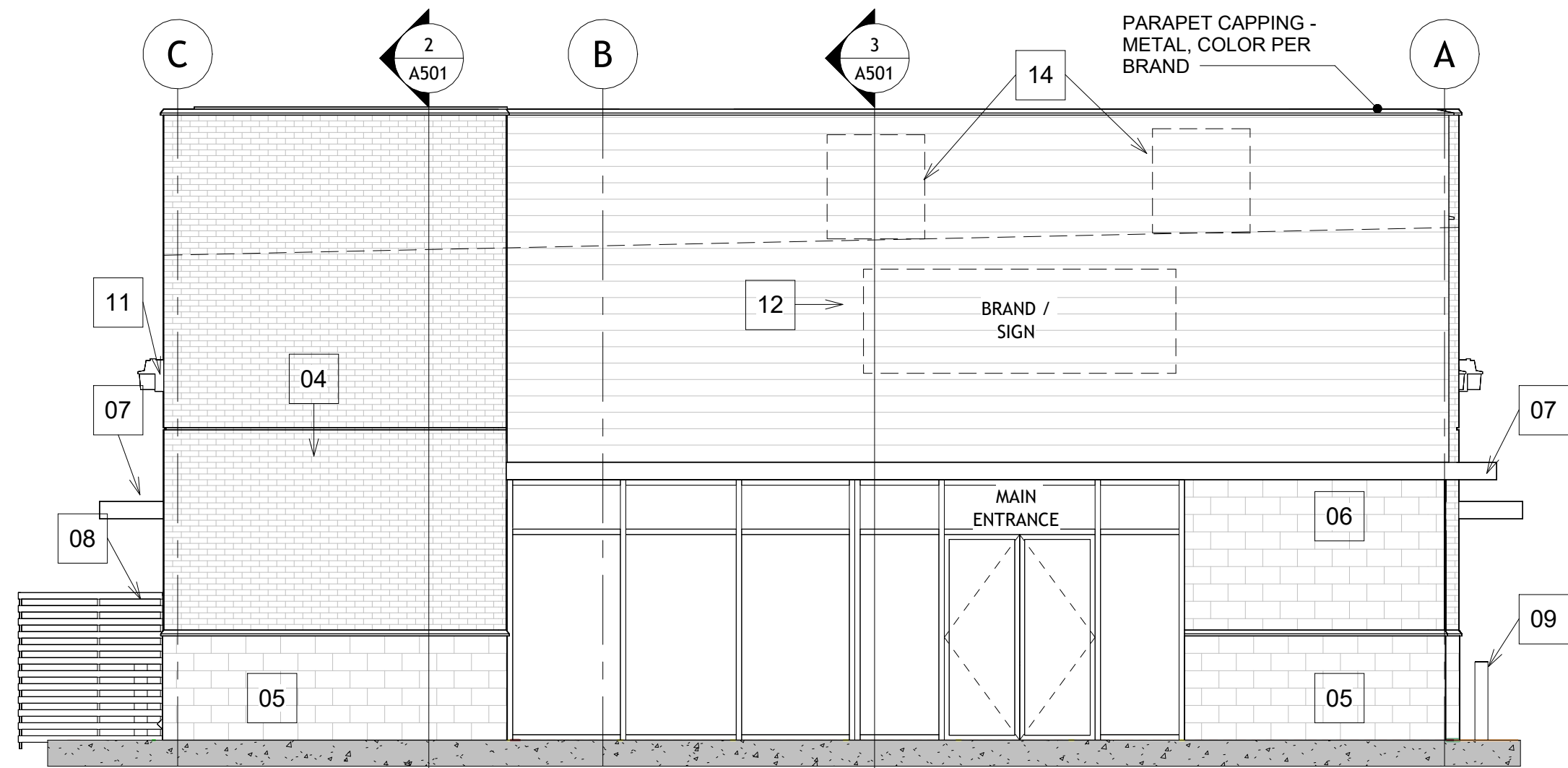
Sheet Title

Context Plan

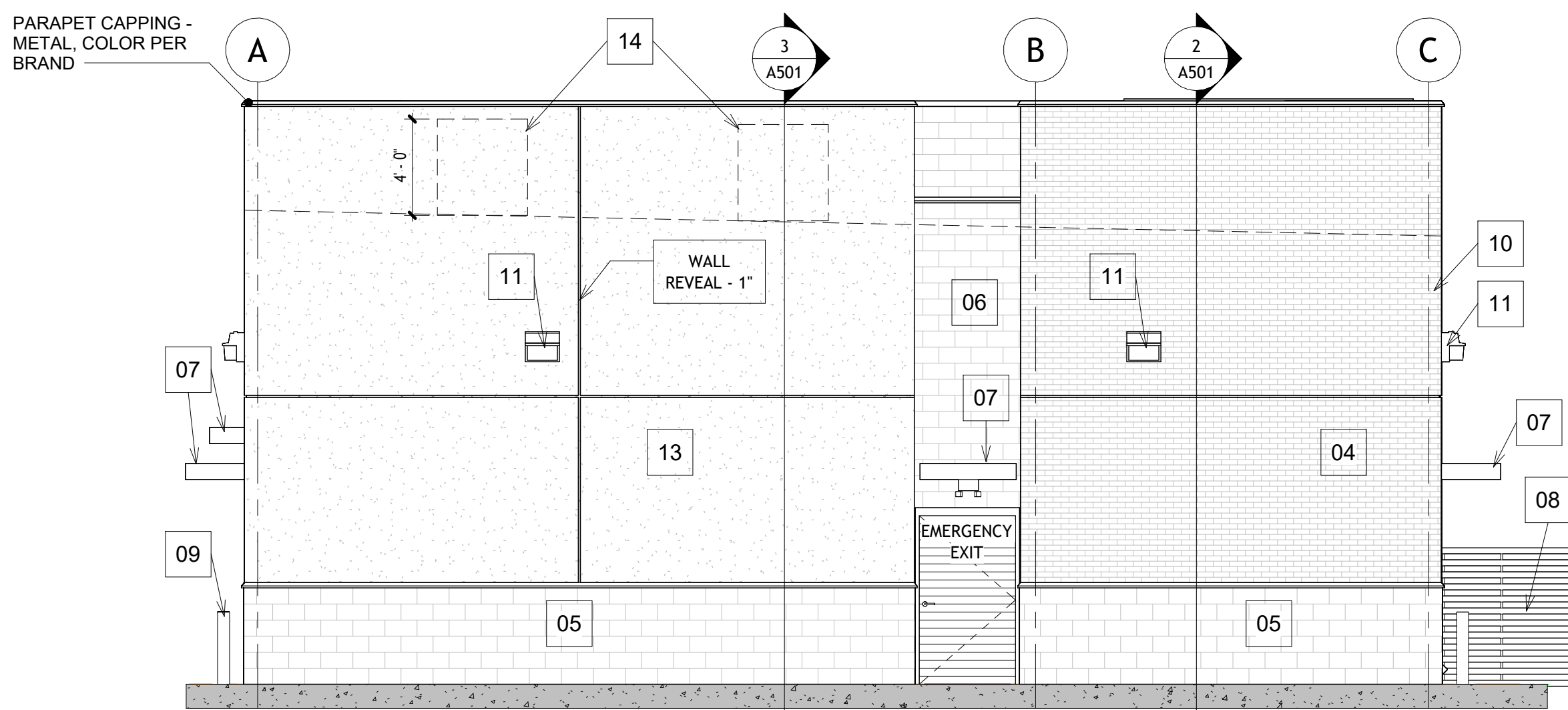
A002

Scale

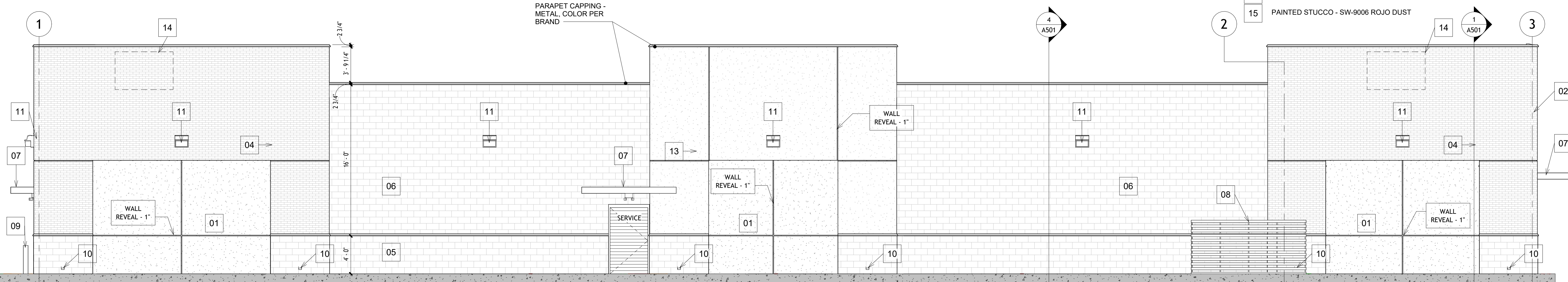
1/4" = 1'-0"



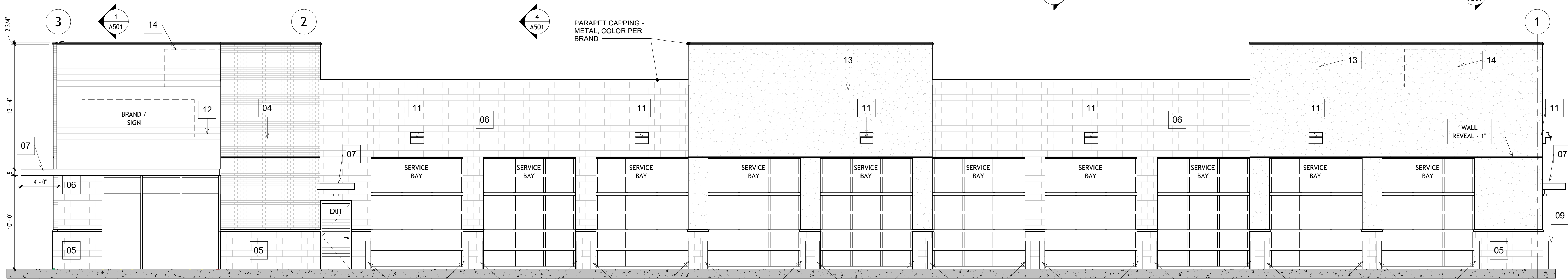
1 South Architectural Building Elevation
3/16" = 1'-0"



4 North Architectural Building Elevation
3/16" = 1'-0"



3 West Architectural Building Elevation
3/16" = 1'-0"



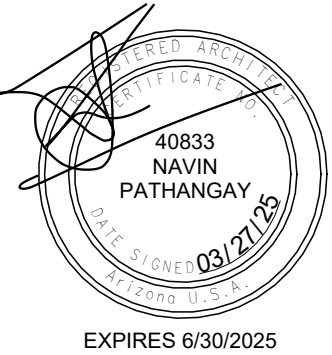
2 East Architectural Building Elevation
3/16" = 1'-0"

GENERAL NOTES - ELEVATIONS

- A EXTERIOR SEALANT SHALL MATCH COLOR OF CMU
- B INSTALL CONTROL JOINTS PER MFR RECOMMENDATIONS.
- C ALL SIGNAGE WILL BE PERMITTED SEPARATELY.
- D COORDINATE ANY REQUIRED KNOX BOXES WITH SHJ/FIRE MARSHALL FOR TYPE AND LOCATION.
- E PRIME ALL CMU BEFORE PAINTING OR INSULATION OF OTHER FINISHES WITH LOXON BLOCK SURFACE LX01 SERIES, (50-100 SQ FT/GAL)
- F ALL EXTERIOR METALWORK, NOT GALVANIZED, SHALL BE PRIMED AND PAINTED WITH 2 COATS OF EXTERIOR ENAMEL PAINT. (LINTELS, BOLLARDS, ETC.)
- G GC SHALL VERIFY LOCAL JURISDICTION AND WIND SPEED REQUIREMENTS TO DETERMINE IF HURRICANE RATED HIGH IMPACT STOREFRONT OR SIGNAGE IS REQUIRED. FURNISH AS REQUIRED.

KEYNOTES - ELEVATIONS

- 01 PAINTED STUCCO - SW9173 SHITAKE OR SIMILAR
- 02 PAINTED STUCCO - SW7025 BACKDROP OR SIMILAR
- 03 PAINTED STUCCO - SHERWIN WILLIAMS: CUSTOM BRAND COLOR
- 04 WALL PANEL - BRICK
- 05 CONCRETE MASONRY UNIT (CMU) - SPLITFACE, COLOR SW7025 OR SIMILAR
- 06 CONCRETE MASONRY UNIT (CMU) - SPLITFACE, COLOR SW9173 OR SIMILAR
- 07 AWNING
- 08 METAL SCREEN
- 09 BOLLARD
- 10 DOWNSPOUT (INSIDE WALL)
- 11 LIGHTING FIXTURE
- 12 METAL PANEL - BRAND AND LOGO PER OWNER
- 13 PAINTED STUCCO - SW-0039 MELLOW MAUVE
- 14 HVAC UNITS PROJECTION
- 15 PAINTED STUCCO - SW-9006 ROJO DUST



Consultant ID

Sun Devil Auto

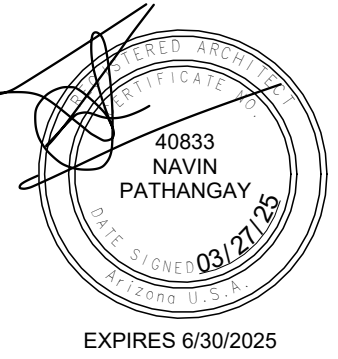
Mesa, AZ 85208

Revision

Project Number
2025.05
Date
Issue Date
Drawn By
RM
Reviewed By
NP
Sheet Title
Elevations

A401

Scale
As indicated



Consultant ID

Sun Devil Auto

Mesa, AZ 85208

Revision

Project Number

2025.05

Date

Issue Date

Drawn By

RM

Reviewed By

NP

Sheet Title

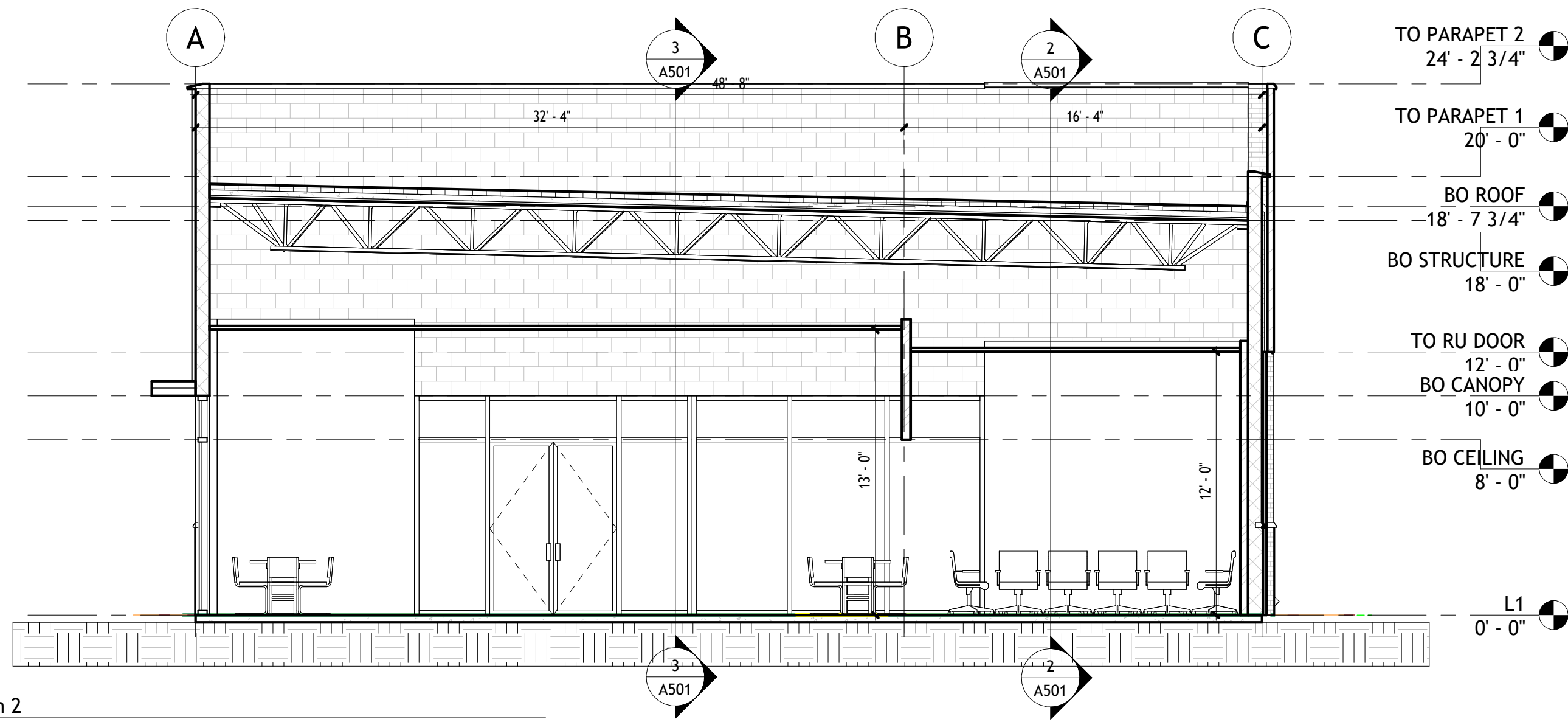
Sections

A501

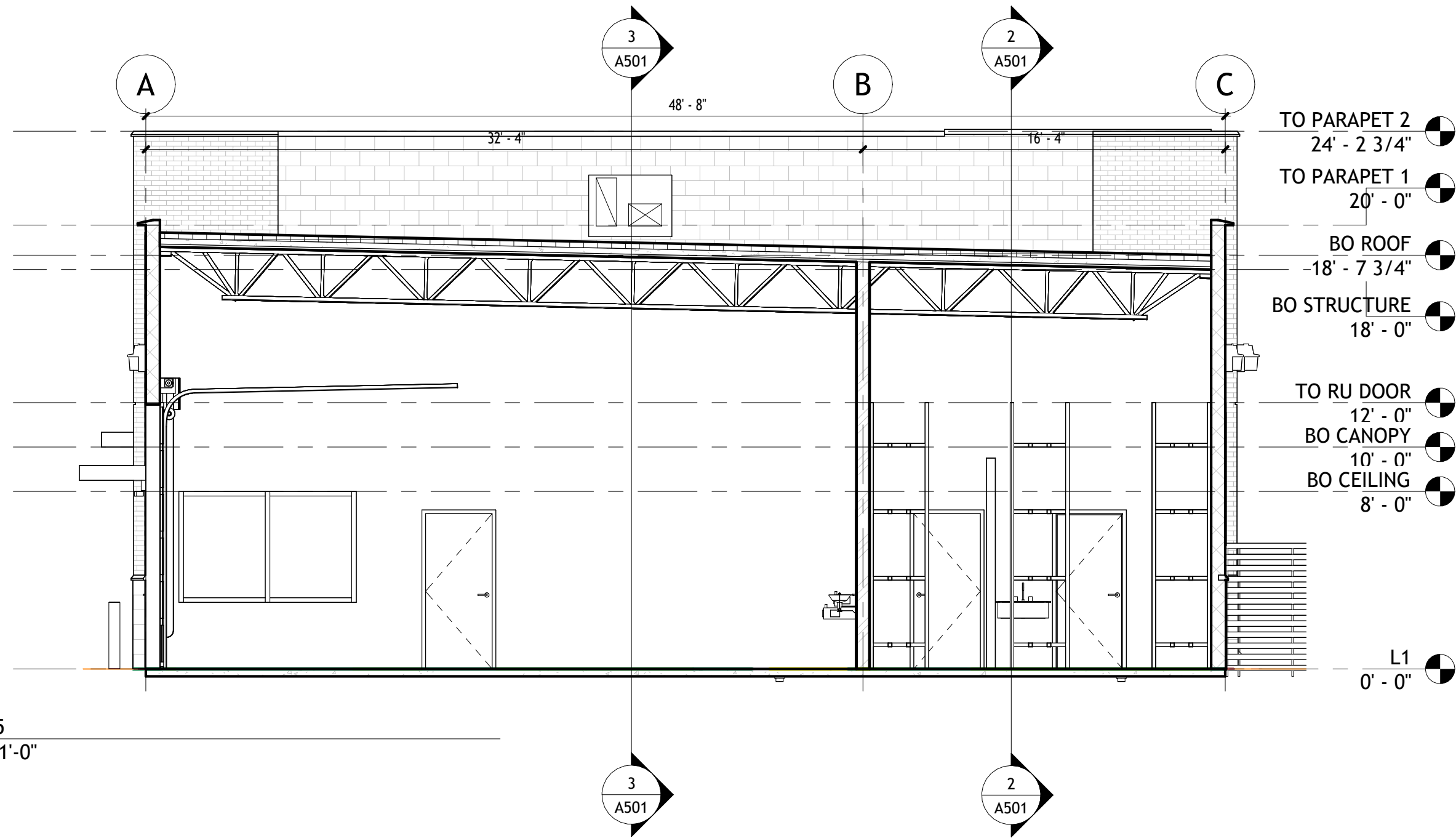
Scale

3/16" = 1'-0"

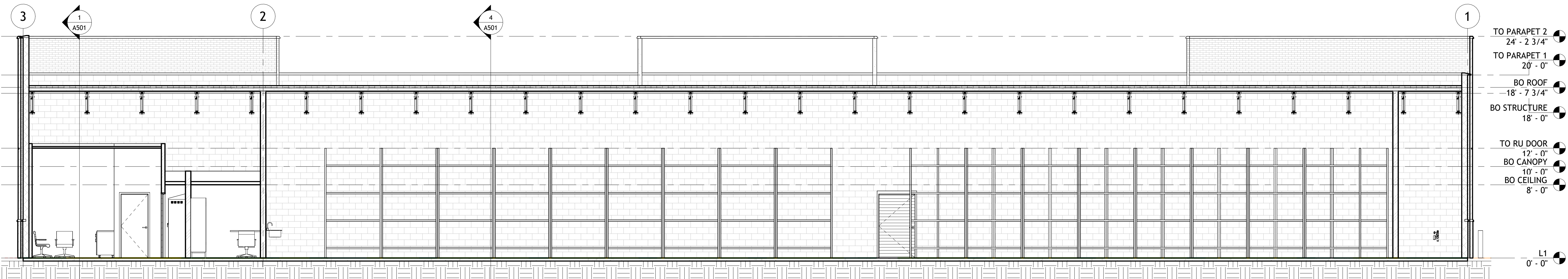
7/25/2025 3:17:39 PM



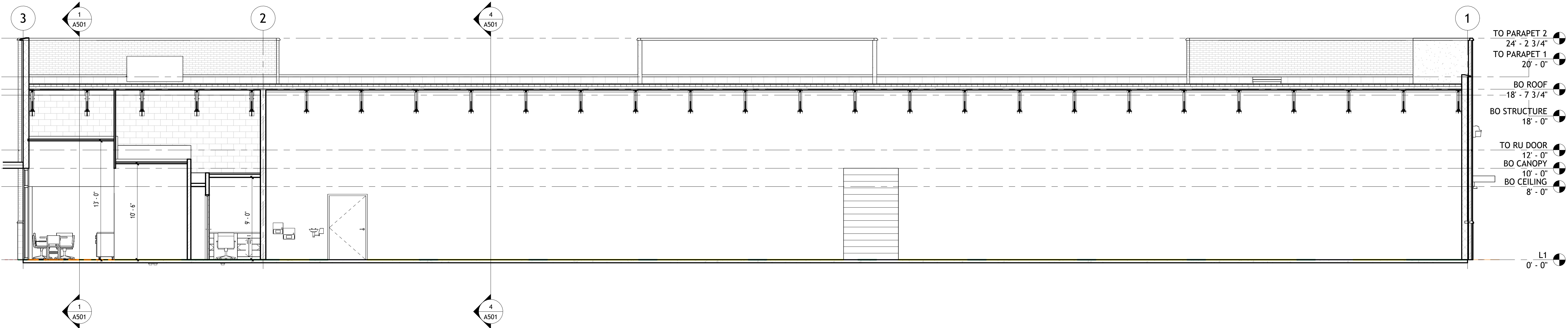
1 Section 2
3/16" = 1'-0"



4 Section 5
3/16" = 1'-0"



2 Section 3
3/16" = 1'-0"



3 Section 4
3/16" = 1'-0"