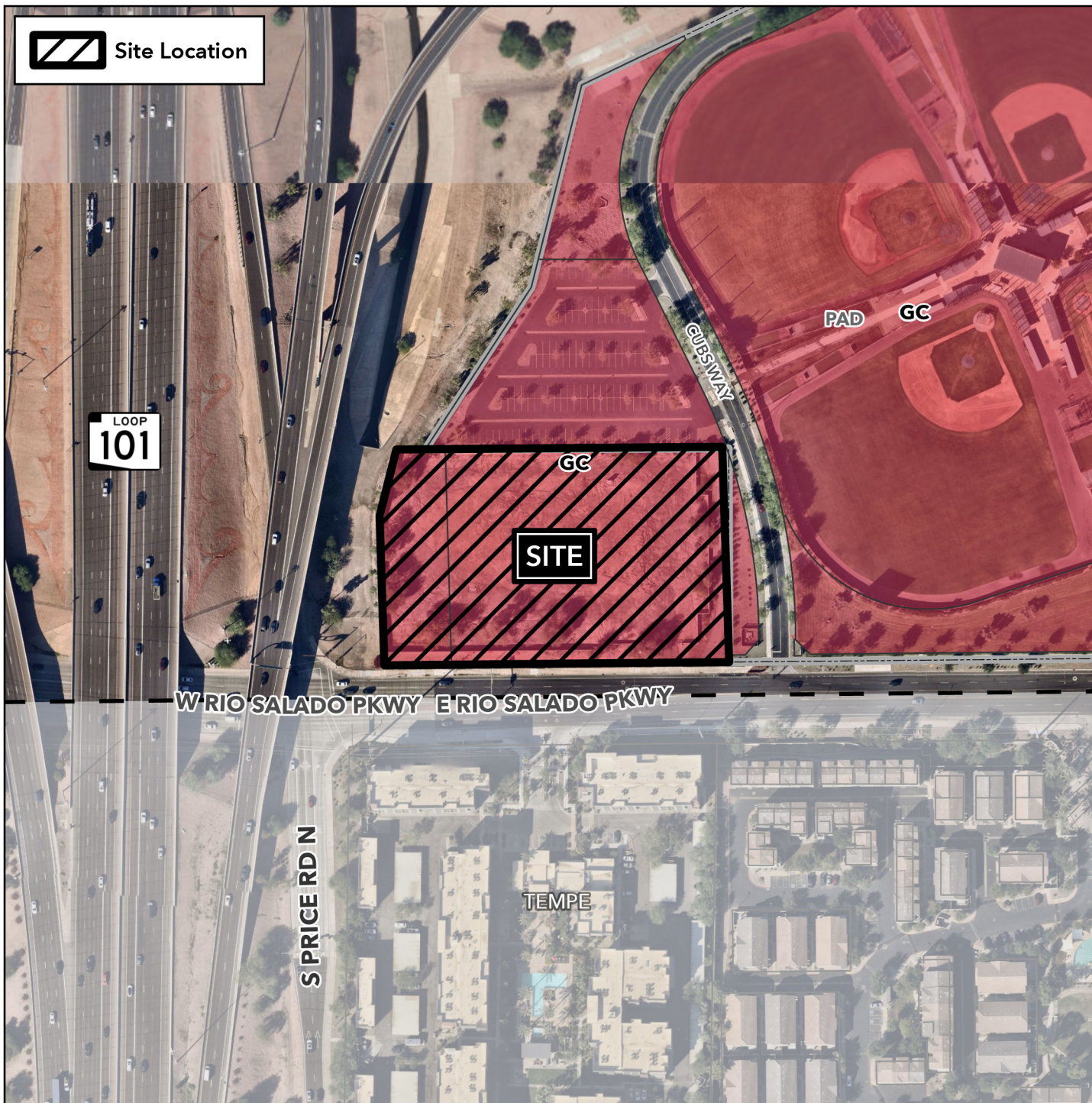


# Design Review Vicinity Map: DRB25-00936

## Case Details



Site Location



### Case:

DRB25-00936

### Site / Address:

(District 3) 3.2± acres located at the northeast corner of North Price Road and West Rio Salado Parkway.

### Request:

Design Review to allow for an approximately 54,725 square foot Hotel and 36-unit Multiple Residence.

