

EXTERIOR ELEVATION KEYNOTES

- 1 FIRE RISER / FIRE DEPARTMENT CONNECTION
- 2 KNOX BOX PER CITY OF MESA REQUIREMENTS
- 3 ALUMINUM FRAME WINDOW SYSTEM WITH 1" OFFSET INSULATED GLAZING
- 4 ROOF DRAIN AND OVERFLOW DRAIN LEADERS
- 5 LED WALL PACK
- 6 3'-0"x7'-0" HOLLOW METAL DOOR
- 7 14'-0"x14'-0" OVERHEAD COILING DOOR
- 8 12'-0"x12'-0" OVERHEAD COILING DOOR
- 9 PAINTED METAL PARAPET CAP
- 10 DASHED LINE INDICATES LINE OF ROOF BEYOND
- 11 DASHED LINE INDICATES FULLY SCREENED MECHANICAL UNIT
- 12 ENTRY CANOPY
- 13 HOSE BIBB
- 14 4" DIAMETER x 6'-0" CONCRETE FILLED PIPE BOLLARD- PAINT SAFETY YELLOW
- 15 3/8" REVEAL

EXTERIOR FINISHES & MATERIALS SCHEDULE

PAINT	
P-1	BEHR "BLACK"
P-2	BEHR #134-2 "CHIC GRAY"
P-3	BEHR #100-4 "POLAR BEAR"
P-4	BEHR #134-3 "GREIGE"
P-5	BEHR #133-7 "INTELLECTUAL"
P-6	BEHR #114-6 "ANCESTRAL"

MASONRY	
CMU-1	8"x8"x16" SMOOTH FACE CMU STANDARD GRAY
CMU-2	12"x8"x16" SMOOTH FACE CMU STANDARD GRAY
CMU-3	8"x8"x16" SPLIT FACE CMU STANDARD GRAY
CMU-4	12"x8"x16" SPLIT FACE CMU STANDARD GRAY

GLASS	
GL-1	1" INSULATED GLAZING UNIT VITRO SOLARBAN 90 (2) CLEAR + CLEAR MULLION FINISH: ARCADIA SYSTEMS- DARK BRONZE FINISH AB7

STUCCO / EIFS	
STUC-1	7/8" STUCCO OVER CMU
STUC-2	7/8" STUCCO OVER METAL STUD FRAMING

METAL	
MTL-1	ALUMINUM COMPOSITE PANEL: DARK BRONZE

ELEVATION MATERIAL PERCENTAGES

SOUTH (FRONT):

RUNNING BOND CMU:	
CMU-1/P-4	451.6 SF
CMU-2/P-4	12.4 SF
SMOOTH FACE CMU TOTAL:	464.0 SF 12%
STACK BOND CMU:	
CMU-1/P-2	582.47 SF
CMU-2/P-2	1.53 SF
STACK BOND TOTAL:	584.0 SF 4%
SPLIT FACE CMU:	
CMU-3/P-6	64.01 SF
CMU-3/P-5	68.27 SF
CMU-4/P-6	11.83 SF
CMU-4/P-5	10.5 SF
SPLIT FACE CMU TOTAL:	154.61 SF 4%
MISCELLANEOUS:	
GL-1	816.58 SF 22%
MTL-1	507.05 SF 14%
P-1	119.73 SF 3%
STUC-1/P-3	1,008.46 SF 28%
TOTAL:	3,640 SF

EAST (LEFT):

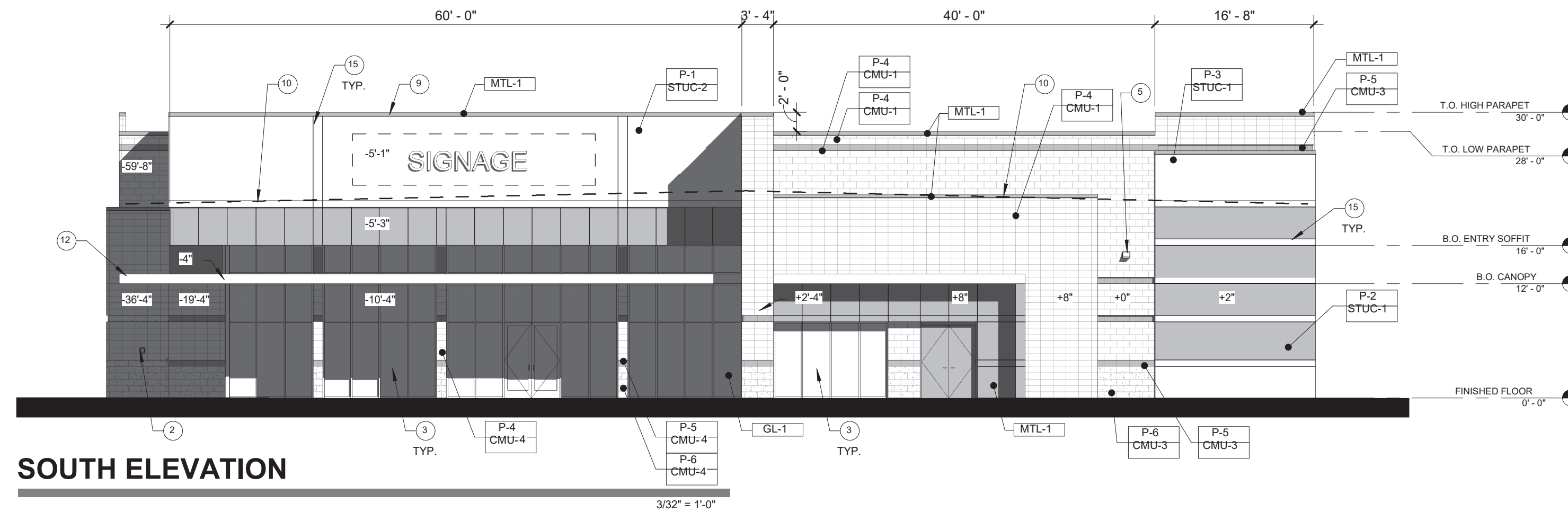
RUNNING BOND CMU:	
CMU-1/P-4	2,267.51 SF
CMU-2/P-4	12.4 SF
SMOOTH FACE CMU TOTAL:	2,279.91 SF 39%
STACK BOND CMU:	
CMU-1/P-2	2,120 SF
CMU-2/P-2	1.53 SF
STACK BOND TOTAL:	2,121.53 SF 36%
SPLIT FACE CMU:	
CMU-3/P-6	339.2 SF
CMU-3/P-5	377.91 SF
SPLIT FACE CMU TOTAL:	717.11 SF 12%
MISCELLANEOUS:	
GL-1	0 SF 0%
MTL-1	0 SF 0%
P-1	87.96 SF 2%
STUC-1/P-3	671.84 SF 11%
TOTAL:	5,813.64 SF

NORTH (REAR):

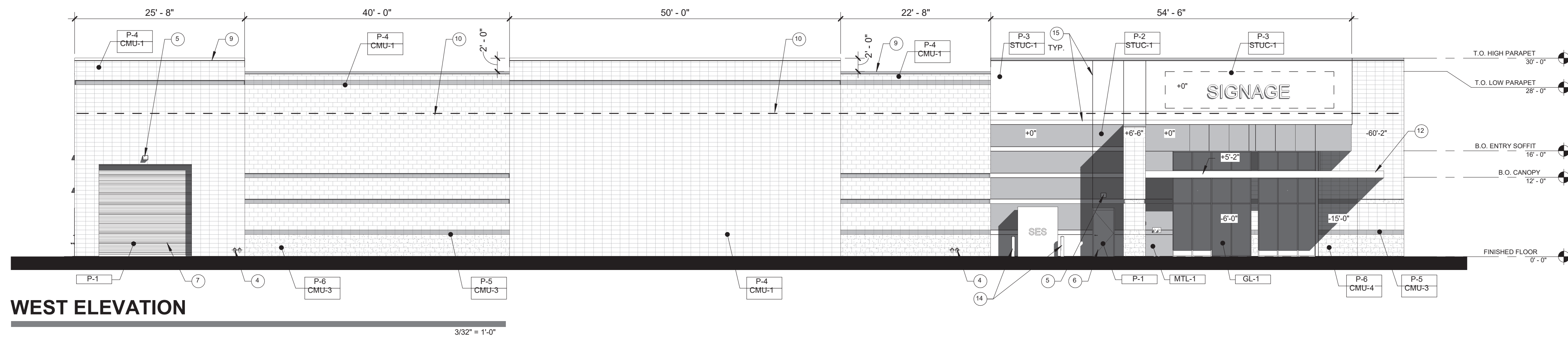
RUNNING BOND CMU:	
CMU-1/P-4	1,112.59 SF
CMU-2/P-4	12.4 SF
SMOOTH FACE CMU TOTAL:	1,125.0 SF 38%
STACK BOND CMU:	
CMU-1/P-2	1,88.54 SF
CMU-2/P-2	1.53 SF
STACK BOND TOTAL:	1,900.5 SF 26%
SPLIT FACE CMU:	
CMU-3/P-6	130.61 SF
CMU-3/P-5	188.97 SF
SPLIT FACE CMU TOTAL:	319.58 SF 7%
MISCELLANEOUS:	
GL-1	0 SF 0%
MTL-1	0 SF 0%
P-1	434.31 SF 10%
STUC-1/P-3	0 SF 0%
TOTAL:	4,273.99 SF

WEST (RIGHT):

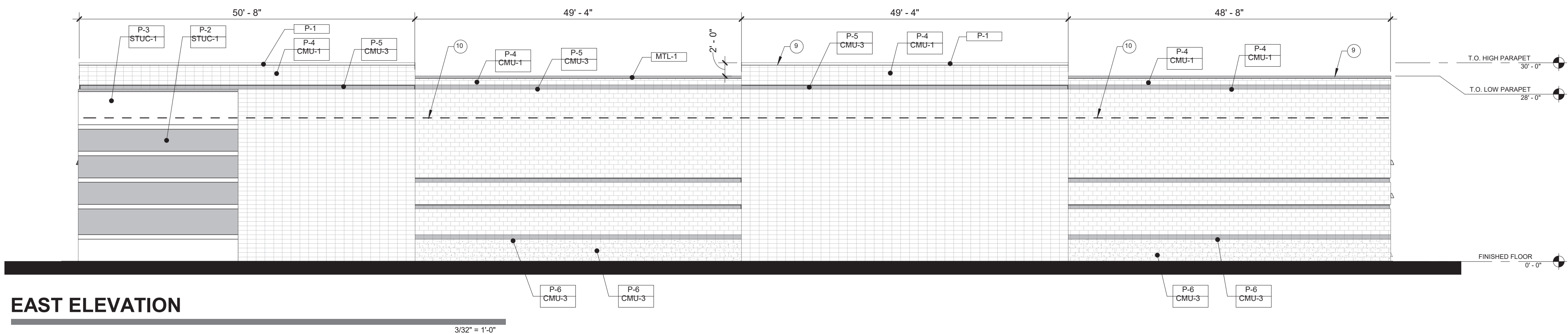
RUNNING BOND CMU:	
CMU-1/P-4	1,978.45 SF
CMU-2/P-4	12.4 SF
SMOOTH FACE CMU TOTAL:	1,990.85 SF 33%
STACK BOND CMU:	
CMU-1/P-2	1,551.98 SF
CMU-2/P-2	1.53 SF
STACK BOND TOTAL:	1,553.51 SF 26%
SPLIT FACE CMU:	
CMU-3/P-6	353.29 SF
CMU-3/P-5	286.84 SF
SPLIT FACE CMU TOTAL:	640.13 SF 8%
MISCELLANEOUS:	
GL-1	0 SF 0%
MTL-1	0 SF 0%
P-1	63.5 SF 1%
STUC-1/P-3	1,152.67 SF 24%
TOTAL:	4,755.78 SF



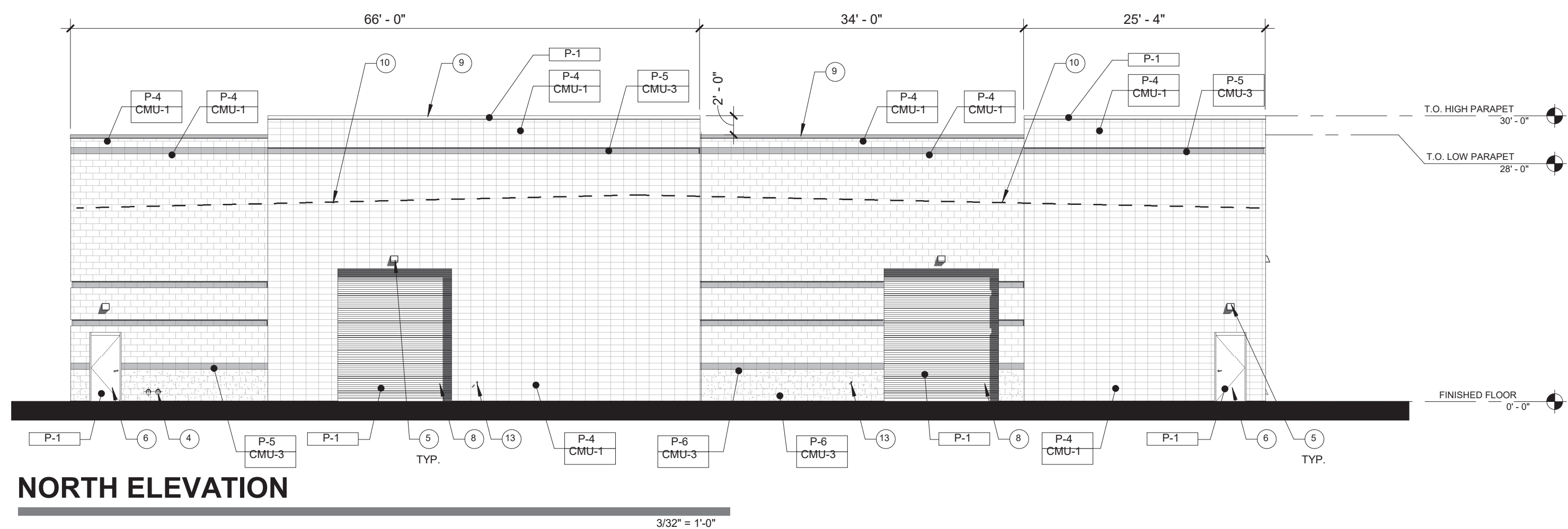
SOUTH ELEVATION



WEST ELEVATION



EAST ELEVATION



NORTH ELEVATION

EXTERIOR ELEVATION KEYNOTES

- 1 FIRE RISER / FIRE DEPARTMENT CONNECTION
- 2 KNOX BOX PER CITY OF MESA REQUIREMENTS
- 3 ALUMINUM FRAME WINDOW SYSTEM WITH 1" OFFSET INSULATED GLAZING
- 4 ROOF DRAIN AND OVERFLOW DRAIN LEADERS
- 5 LED WALL PACK
- 6 3'-0"x7'-0" HOLLOW METAL DOOR
- 7 14'-0"x14'-0" OVERHEAD COILING DOOR
- 8 12'-0"x12'-0" OVERHEAD COILING DOOR
- 9 PAINTED METAL PARAPET CAP
- 10 DASHED LINE INDICATES LINE OF ROOF BEYOND
- 11 DASHED LINE INDICATES FULLY SCREENED MECHANICAL UNIT
- 12 ENTRY CANOPY
- 13 HOSE BIBB
- 14 4" DIAMETER x 6'-0" CONCRETE FILLED PIPE BOLLARD- PAINT SAFETY YELLOW
- 15 3/8" REVEAL

EXTERIOR FINISHES & MATERIALS SCHEDULE

PAINT	
P-1	BEHR "BLACK"
P-2	BEHR #134-2 "CHIC GRAY"
P-3	BEHR #100-4 "POLAR BEAR"
P-4	BEHR #134-3 "GREIGE"
P-5	BEHR #133-7 "INTELLECTUAL"
P-6	BEHR #114-6 "ANCESTRAL"

MASONRY	
CMU-1	8"x8"x16" SMOOTH FACE CMU STANDARD GRAY
CMU-2	12"x8"x16" SMOOTH FACE CMU STANDARD GRAY
CMU-3	8"x8"x16" SPLIT FACE CMU STANDARD GRAY
CMU-4	12"x8"x16" SPLIT FACE CMU STANDARD GRAY

GLASS	
GL-1	1" INSULATED GLAZING UNIT VITRO SOLARBAN 90 (2) CLEAR + CLEAR MULLION FINISH: ARCADIA SYSTEMS- DARK BRONZE FINISH AB7

STUCCO / EIFS	
STUC-1	7/8" STUCCO OVER CMU
STUC-2	7/8" STUCCO OVER METAL STUD FRAMING

METAL	
MTL-1	ALUMINUM COMPOSITE PANEL: DARK BRONZE

ELEVATION MATERIAL PERCENTAGES

SOUTH (FRONT):

RUNNING BOND CMU:	
CMU-1/P-4	2,267.51 SF
CMU-2/P-4	2,267.51 SF
SMOOTH FACE CMU TOTAL:	4,535.02 SF 39%
STACK BOND CMU:	
CMU-1/P-2	582.47 SF
CMU-2/P-2	582.47 SF
STACK BOND TOTAL:	1,164.94 SF 10%
SPLIT FACE CMU:	
CMU-3/P-6	64.01 SF
CMU-3/P-5	68.27 SF
CMU-4/P-6	11.83 SF
CMU-4/P-5	10.50 SF
SPLIT FACE CMU TOTAL:	154.61 SF 1%
MISCELLANEOUS:	
GL-1	816.58 SF 7%
MTL-1	507.05 SF 4%
P-1	119.73 SF 1%
STUC-1/P-3	1,008.46 SF 9%
TOTAL:	3,640 SF 31%

EAST (LEFT):

RUNNING BOND CMU:	
CMU-1/P-4	2,267.51 SF
SMOOTH FACE CMU TOTAL:	2,267.51 SF 39%
STACK BOND CMU:	
CMU-1/P-2	2,120 SF
STACK BOND TOTAL:	2,120 SF 18%
SPLIT FACE CMU:	
CMU-3/P-6	339.2 SF
CMU-3/P-5	377.91 SF
SPLIT FACE CMU TOTAL:	717.11 SF 6%
MISCELLANEOUS:	
GL-1	0 SF 0%
MTL-1	0 SF 0%
P-1	87.96 SF 0%
STUC-1/P-3	621.84 SF 5%
TOTAL:	5,813.64 SF 50%

WEST (RIGHT):

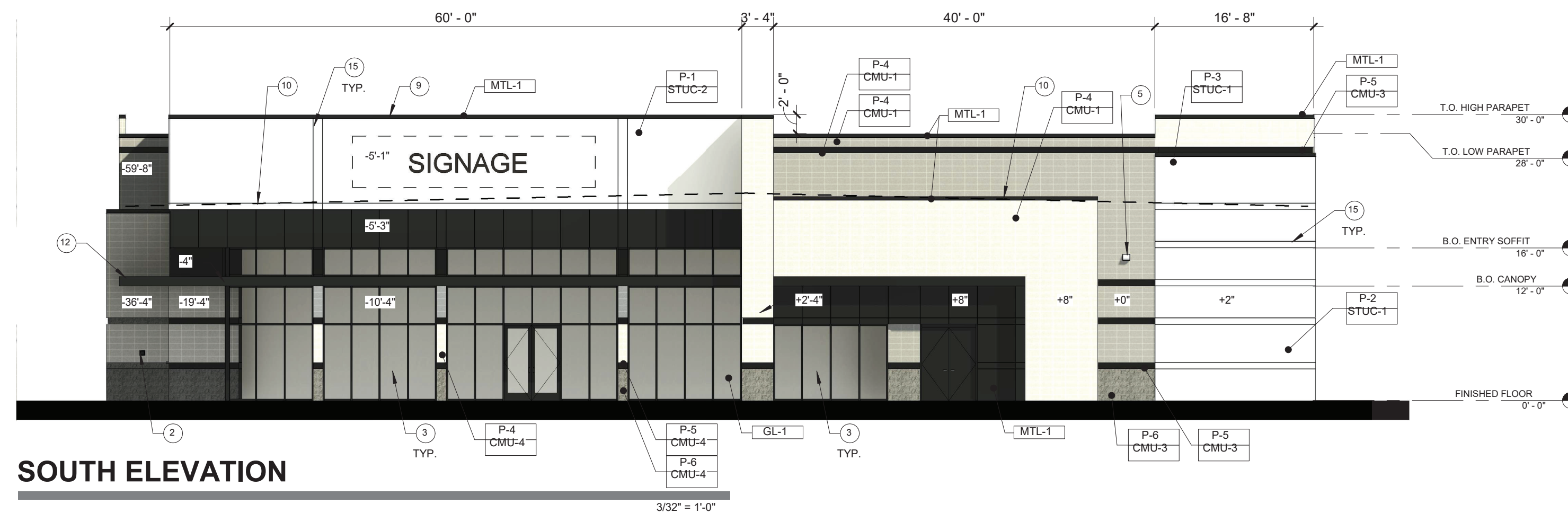
RUNNING BOND CMU:	
CMU-1/P-4	1,978.45 SF
SMOOTH FACE CMU TOTAL:	1,978.45 SF 33%
STACK BOND CMU:	
CMU-1/P-2	1,551.98 SF
STACK BOND TOTAL:	1,551.98 SF 26%
SPLIT FACE CMU:	
CMU-3/P-6	353.29 SF
CMU-3/P-5	286.84 SF
SPLIT FACE CMU TOTAL:	640.13 SF 11%
MISCELLANEOUS:	
GL-1	0 SF 0%
MTL-1	0 SF 0%
P-1	63.5 SF 0%
STUC-1/P-3	1,152.67 SF 20%
TOTAL:	4,755.78 SF 41%

NORTH (REAR):

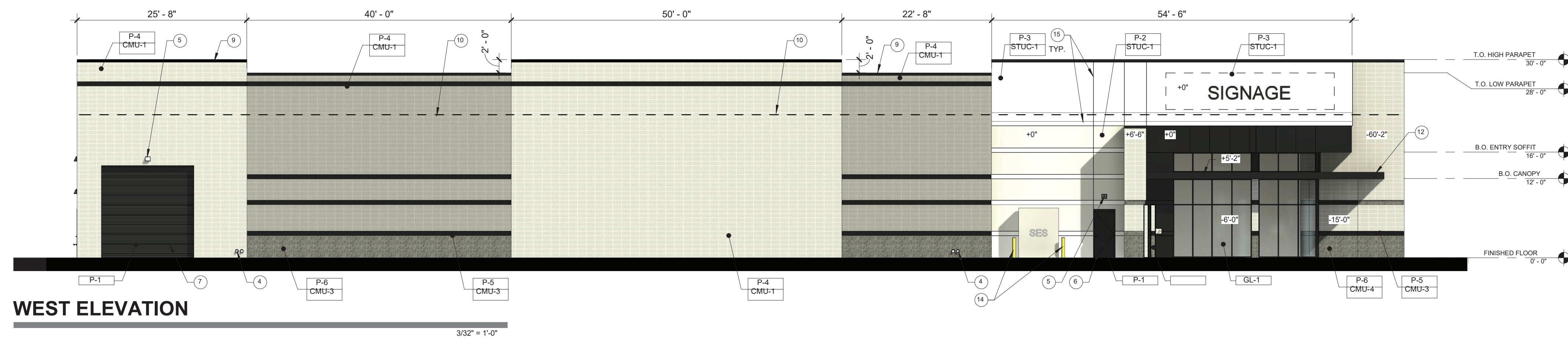
RUNNING BOND CMU:	
CMU-1/P-4	1,112.59 SF
SMOOTH FACE CMU TOTAL:	1,112.59 SF 38%
STACK BOND CMU:	
CMU-1/P-2	1,88.54 SF
STACK BOND TOTAL:	1,88.54 SF 6%
SPLIT FACE CMU:	
CMU-3/P-6	130.61 SF
CMU-3/P-5	188.97 SF
SPLIT FACE CMU TOTAL:	319.58 SF 10%
MISCELLANEOUS:	
GL-1	0 SF 0%
MTL-1	0 SF 0%
P-1	434.31 SF 12%
STUC-1/P-3	0 SF 0%
TOTAL:	4,273.99 SF 36%

SOUTH (FRONT):

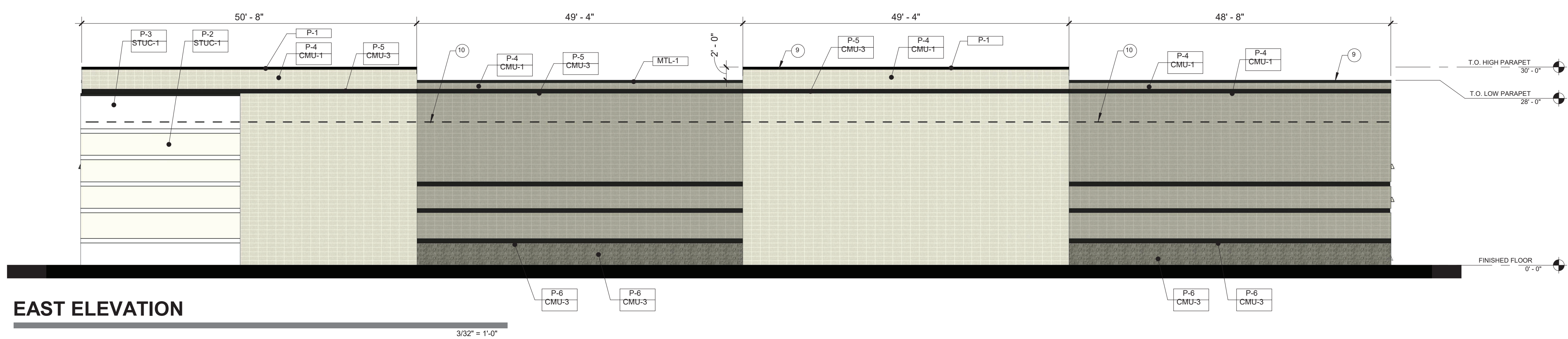
RUNNING BOND CMU:	
CMU-1/P-4	1,978.45 SF
SMOOTH FACE CMU TOTAL:	1,978.45 SF 33%
STACK BOND CMU:	
CMU-1/P-2	1,551.98 SF
STACK BOND TOTAL:	1,551.98 SF 26%
SPLIT FACE CMU:	
CMU-3/P-6	353.29 SF
CMU-3/P-5	286.84 SF
SPLIT FACE CMU TOTAL:	640.13 SF 11%
MISCELLANEOUS:	
GL-1	0 SF 0%
MTL-1	0 SF 0%
P-1	63.5 SF 0%
STUC-1/P-3	1,152.67 SF 20%
TOTAL:	4,755.78 SF 41%



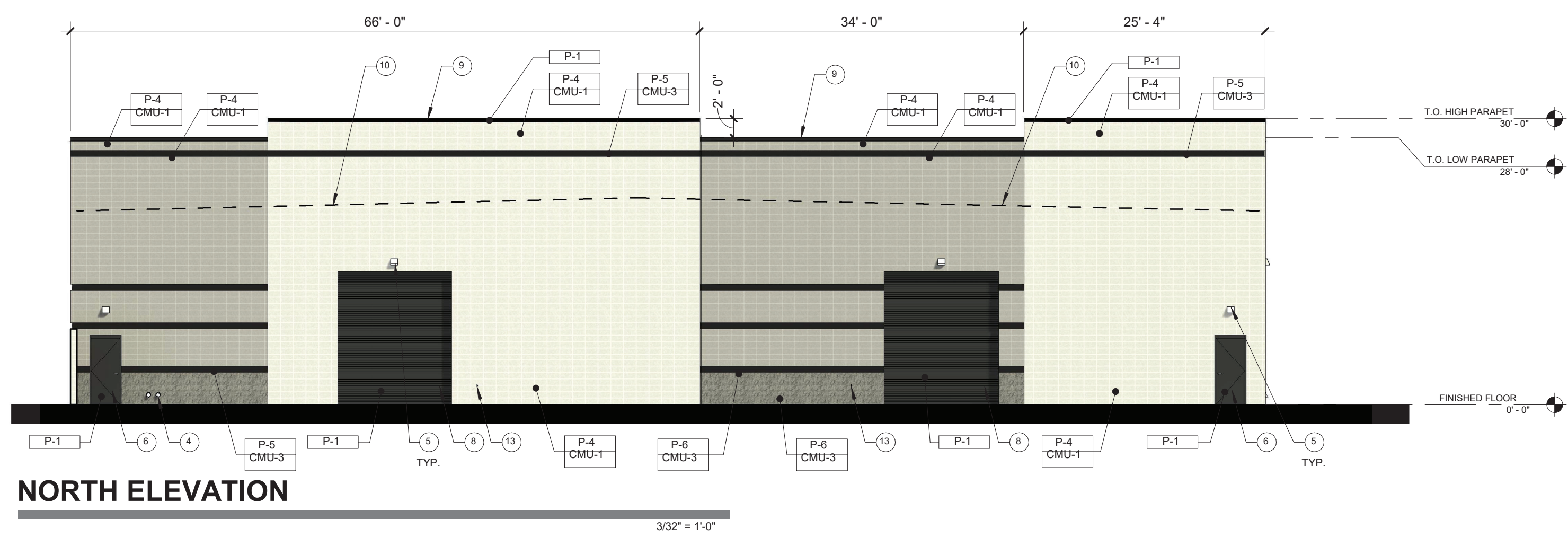
SOUTH ELEVATION



WEST ELEVATION



EAST ELEVATION



NORTH ELEVATION



1 CONCEPTUAL BUILDING PERSPECTIVE SW