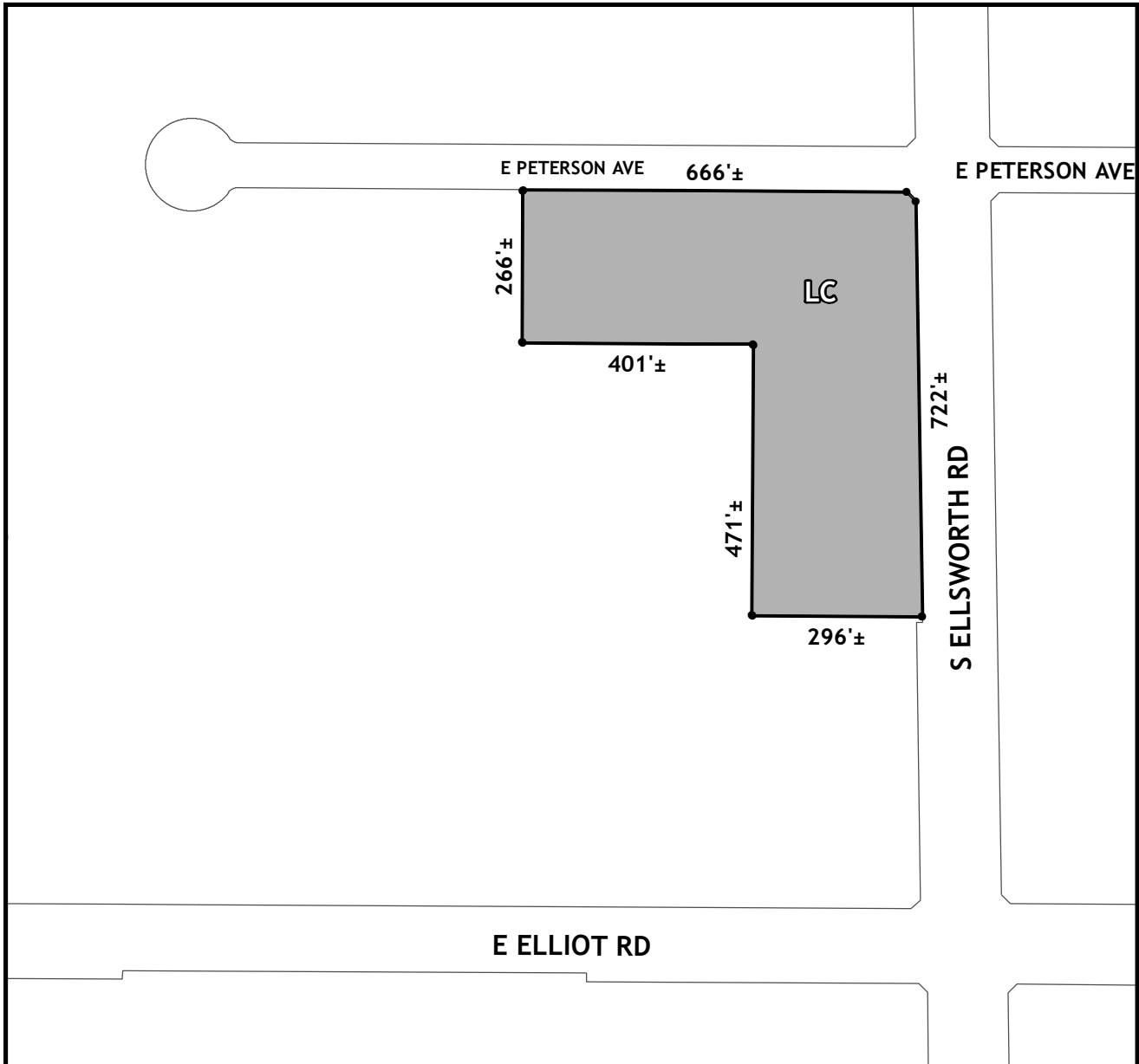




# OFFICIAL SUPPLEMENTARY ZONING MAP AMENDING THE CITY OF MESA ZONING MAP



**CASE:** ZON23-00174  
**ACREAGE:** 7.5±  
**REQUEST:** Rezone from Planned Employment Park with two Planned Area Development overlays (PEP-PAD-PAD) and Limited Commercial with two Planned Area Development overlays (LC-PAD-PAD) to Limited Commercial (LC) and Site Plan Review.  
**ORDINANCE:** 5855

Please be advised that the attached zoning changes were approved by the Mesa City Council on May 20, 2024 by Ordinance # 5855. If you have any questions concerning these changes, contact the City of Mesa Planning Division at 480-644-2385.

\_\_\_\_\_ ATTEST: \_\_\_\_\_ DATE: \_\_\_\_\_  
 MAYOR CITY CLERK