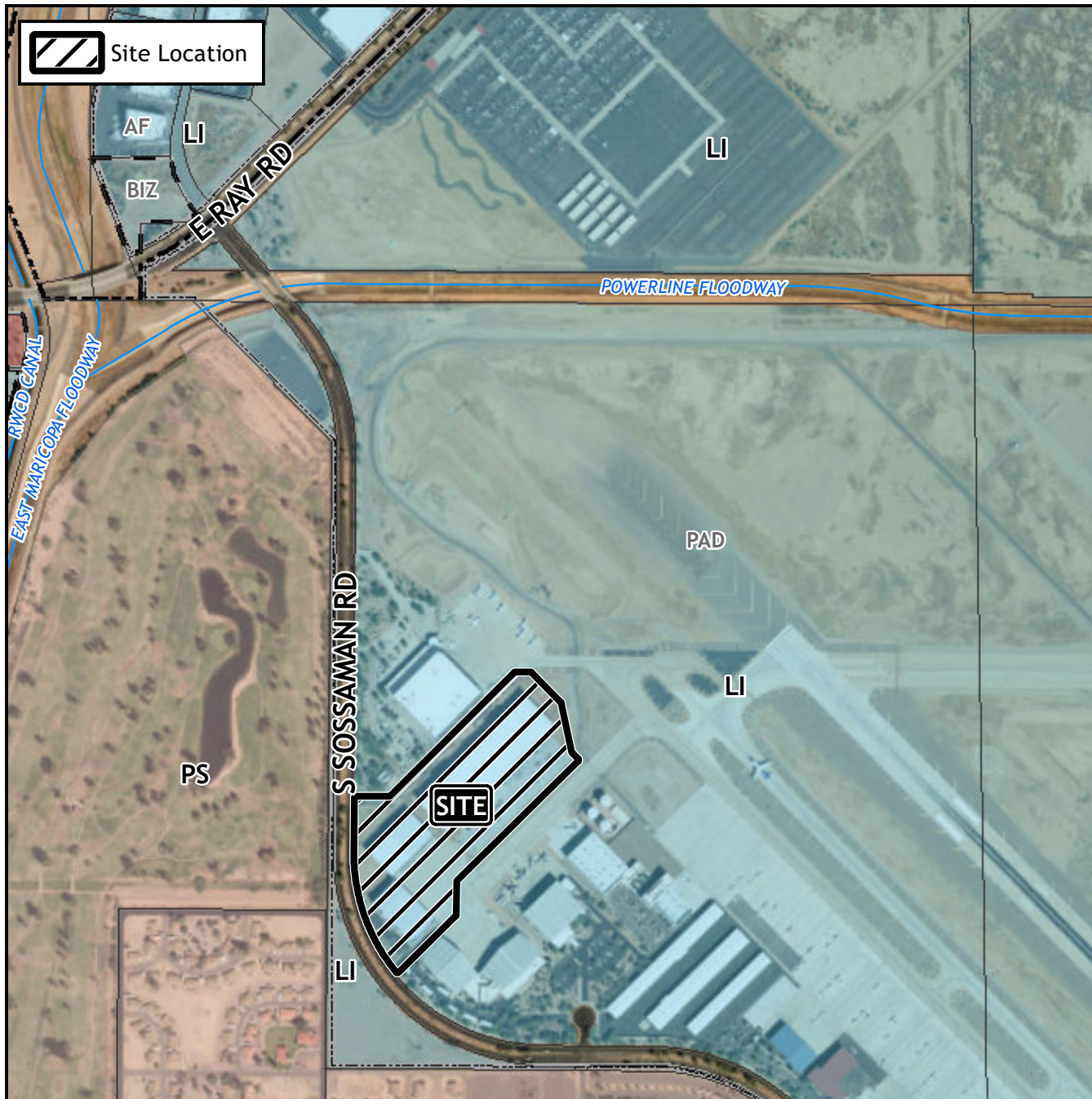


Board of Adjustment Vicinity Map: BOA24-00239



Case Details

Case:

BOA24-00239

Site / Address:

(District 6). 5559 South Sossaman Road, Hanger 107. Located south of Ray Road on the east side of Sossaman Road.

Request:

Requesting a Special Use Permit for a parking reduction for a manufacturing use in the Light Industrial with a Planned Area Development overlay (LI-PAD) District.

