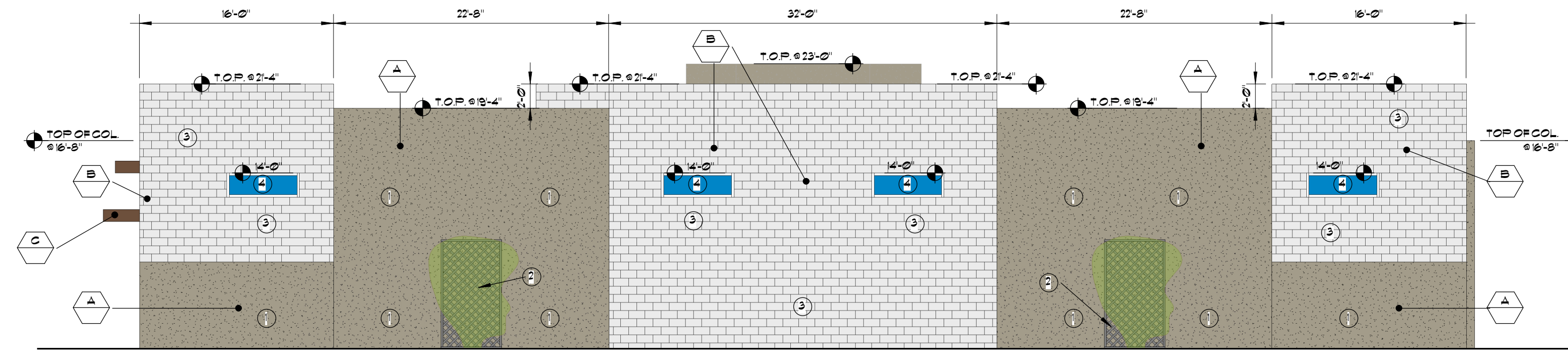
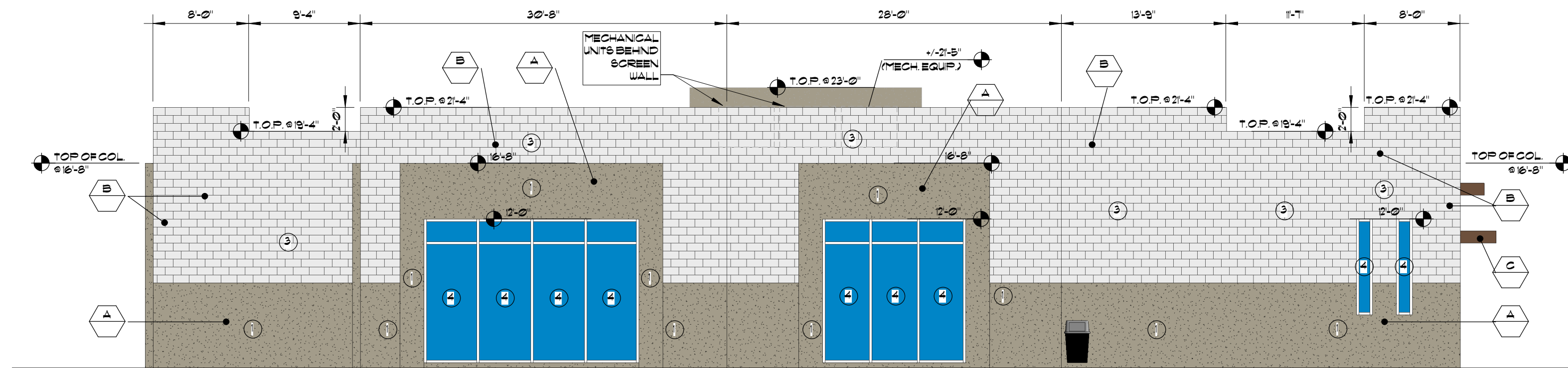


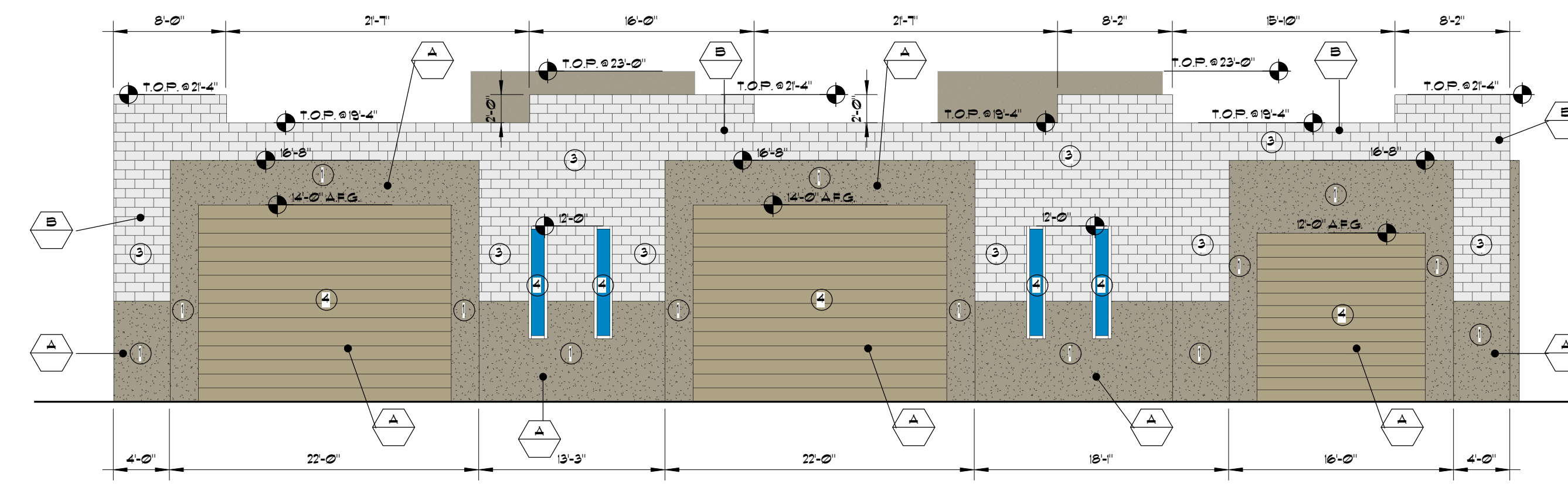
**EAST ELEVATION**  
1  
1/8" = 1'-0"



**NORTH ELEVATION**  
2  
1/8" = 1'-0"



**SOUTH ELEVATION**  
3  
1/8" = 1'-0"



**WEST ELEVATION**  
4  
1/8" = 1'-0"

**MATERIAL SQ. FOOTAGE**

- EAST ELEVATION:** 2,138 SQ. FT.
1. STUCCO: 1,058 SQ. FT. (49.0%)
  2. METAL: 78 SQ. FT. (3.7%)
  3. CMU/SPLIT-FACE BLOCK: 692 SQ. FT. (32.7%)
  4. DOORS/WINDOWS: 310 SQ. FT. (14.6%)

- NORTH ELEVATION:** 2,287 SQ. FT.
1. STUCCO: 1,035 SQ. FT. (45.2%)
  2. METAL TRELLIS: 90 SQ. FT. (3.9%)
  3. CMU/SPLIT-FACE BLOCK: 1,120 SQ. FT. (48.8%)
  4. DOORS/WINDOWS: 482 SQ. FT. (21.1%)

- SOUTH ELEVATION:** 2,345 SQ. FT.
1. STUCCO: 787 SQ. FT. (33.6%)
  2. METAL: 0 SQ. FT. (0%)
  3. CMU/SPLIT-FACE BLOCK: 1,608 SQ. FT. (68.8%)
  4. DOORS/WINDOWS: 350 SQ. FT. (16.6%)

- WEST ELEVATION:** 2,021 SQ. FT.
1. STUCCO: 650 SQ. FT. (32.1%)
  2. METAL TRELLIS: 0 SQ. FT. (0%)
  3. CMU/SPLIT-FACE BLOCK: 710 SQ. FT. (34.8%)
  4. DOORS/WINDOWS: 661 SQ. FT. (33.1%)

FINISH SCHEDULE			
TAG	NAME	NUMBER	MANUFACTURER
A	TEXTURAL SAND (MAN BUILDING COLOR)	608284	SHERMAN-WILLIAMS
B	SPYGLASS CMU		
C	BRONZE ANODIZED		
D	--		
E	--		
F	--		
G	--		
H	--		



**GLEN SCOTT LLC**  
1762 S. ATWOOD, MESA, AZ

CHAVEZ & ASSOCIATES RETAINS ALL RIGHTS OF OWNERSHIP TO THIS DESIGN INCLUDING, BUT NOT LIMITED TO, THE RIGHT TO REPRODUCE OR TO REPRODUCE THIS DESIGN AND/OR DESIGN DOCUMENTS IN WHOLE OR IN PART IN ANY MANNER LEGAL OR ILLEGAL WITHOUT THE WRITTEN CONSENT OF CHAVEZ & ASSOCIATES. THESE DOCUMENTS ARE INTENDED TO BE USED ONLY FOR THE PROJECT AND SITE SPECIFICALLY IDENTIFIED HEREIN. ANY OTHER USE OF THESE DOCUMENTS WITHOUT THE WRITTEN CONSENT OF CHAVEZ & ASSOCIATES IS STRICTLY PROHIBITED.

EDWARD D. CHAVEZ  
AIA ARCHITECT  
602.982.9600

**CHAVEZ & ASSOCIATES**  
ARCHITECTURE • DEVELOPMENT • COMMERCIAL • RESIDENTIAL • INTERIOR DESIGN

4720 EAST CHOLLA STREET PHOENIX, ARIZONA  
602.982.9711 / 982.8600 / EMAIL: ECHAVEZ@ECHAVEZ.NET  
SINCE 1972

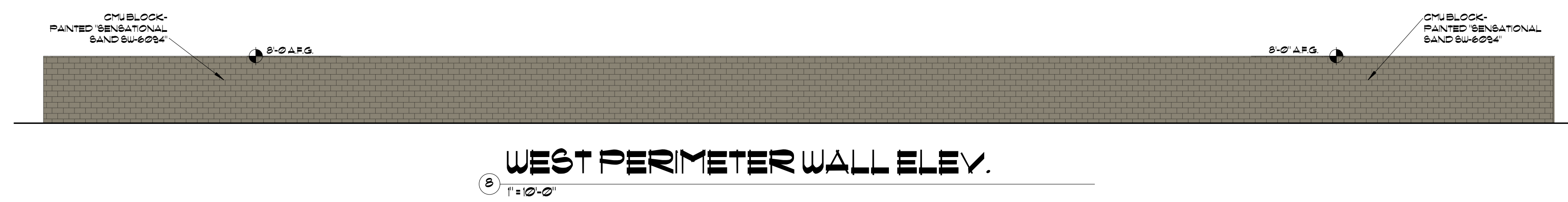
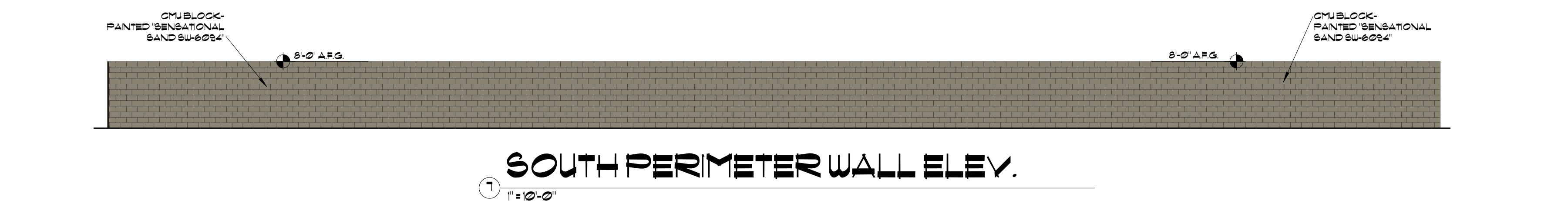
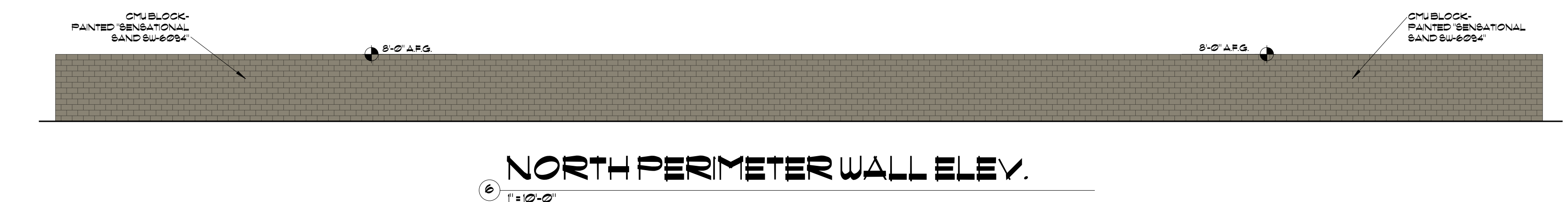
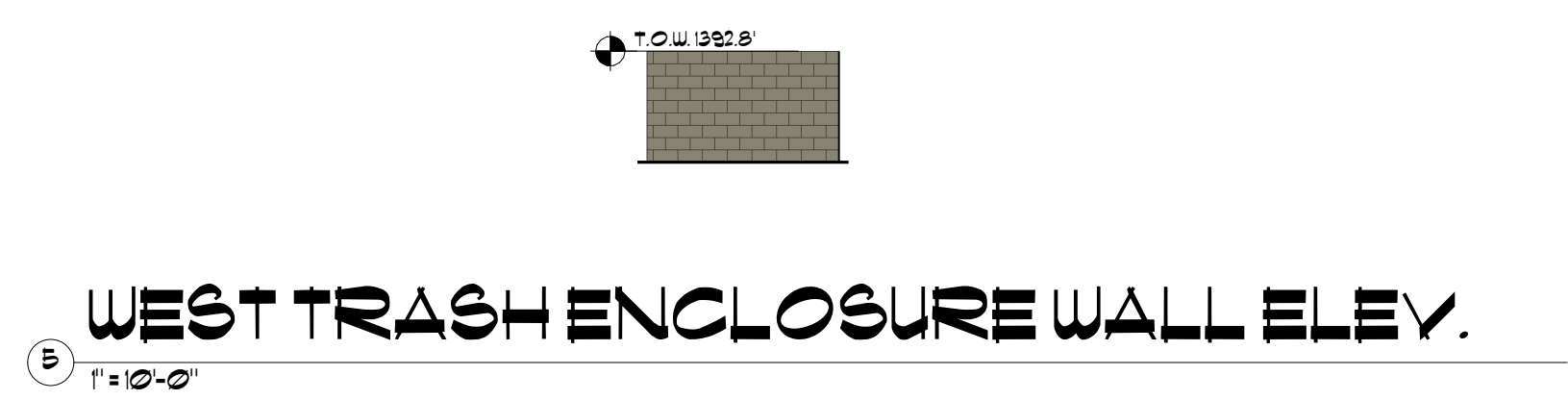
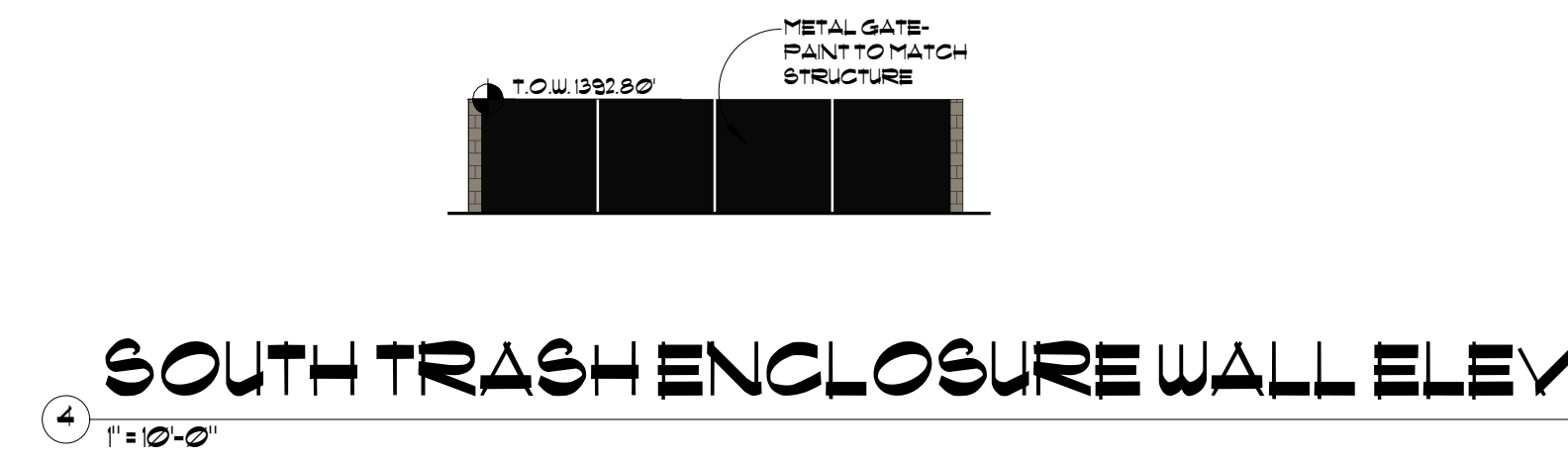
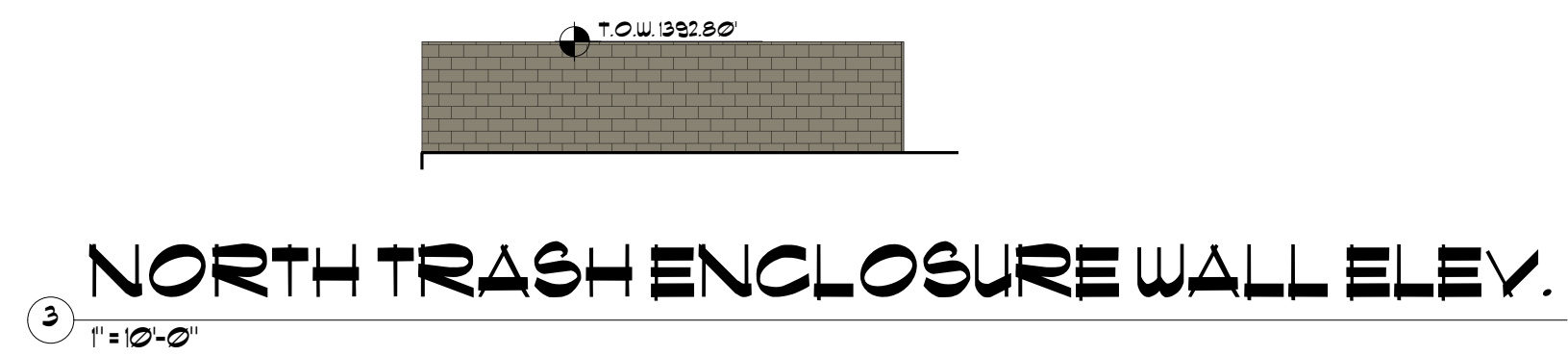
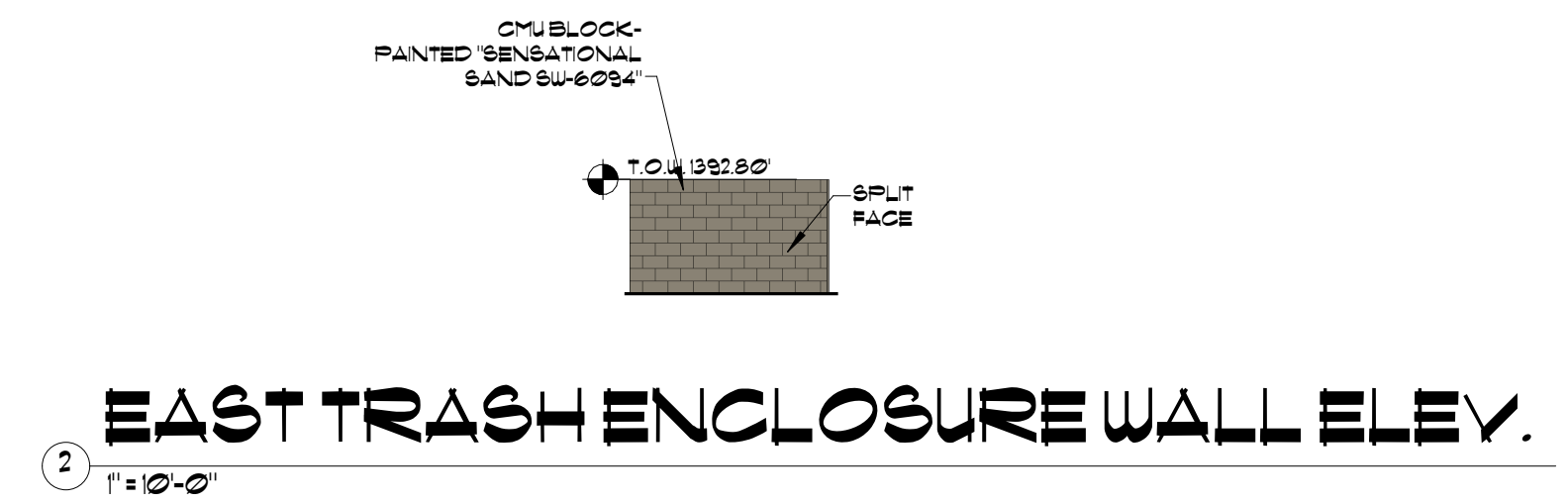
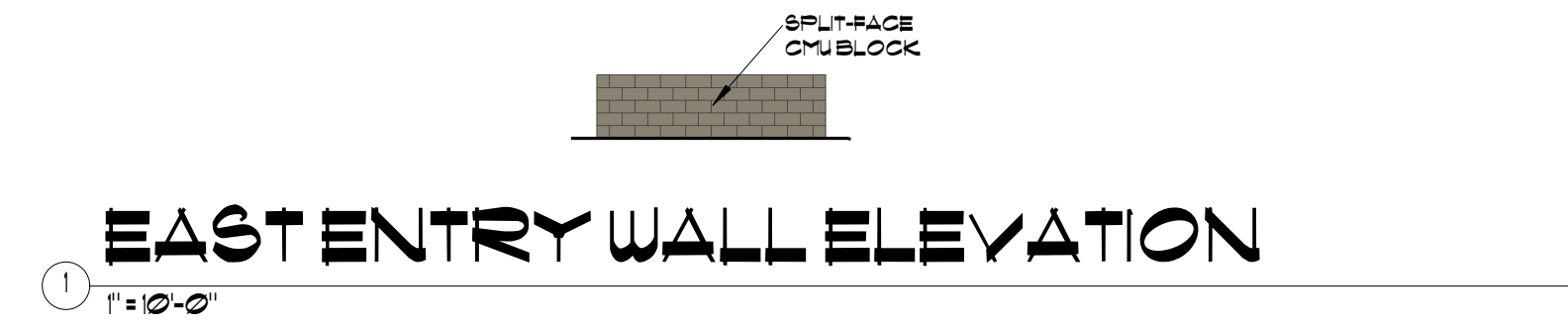
DATE	BY	REVISIONS

JOB NUMBER: --

SHEET DESCRIPTION:  
EXTERIOR ELEVATIONS

DATE: JANUARY 23, 2025





**GLEN SCOTT LLC**  
1762 S. ATWOOD, MESA, AZ

CHAVEZ ASSOCIATES RETAINS ALL RIGHTS OF OWNERSHIP TO THIS DESIGN INCLUDING, BUT NOT LIMITED TO, THE RIGHT TO REUSE, REPRODUCE, OR OTHERWISE DISSEMINATE ANY PART OF THIS DESIGN AND/OR DESIGN DOCUMENTS IN ANY MANNER WITHOUT THE WRITTEN CONSENT OF CHAVEZ ASSOCIATES. THESE DOCUMENTS ARE LIMITED TO THE ORIGINAL SITE FOR WHICH THEY WERE PREPARED AND ARE NOT TO BE REPRODUCED OR TRANSMITTED IN ANY FORM OR BY ANY MEANS, ELECTRONIC OR MECHANICAL, INCLUDING PHOTOCOPYING, RECORDING, OR BY ANY INFORMATION STORAGE AND RETRIEVAL SYSTEM. THESE DOCUMENTS ARE VALID ONLY IF THE SIGNATURE OF THE ARCHITECT IS PRESENT.

EDWARD D. CHAVEZ  
AIA ARCHITECT  
(602) 952-9600

**CHAVEZ • AIA**

ARCHITECTURE • DEVELOPMENT • COMMERCIAL • RESIDENTIAL • INTERIOR DESIGN  
4720 EAST CHOLLA STREET PHOENIX, ARIZONA  
602-483-9711 / 992-8600 / EMAIL: ECHAVEZ@ECHAVEZ.NET  
SINCE 1972

DATE	REVISION

JOB NUMBER: --

SHEET DESCRIPTION: SITE ELEVATIONS

DATE: JANUARY 23, 2025

