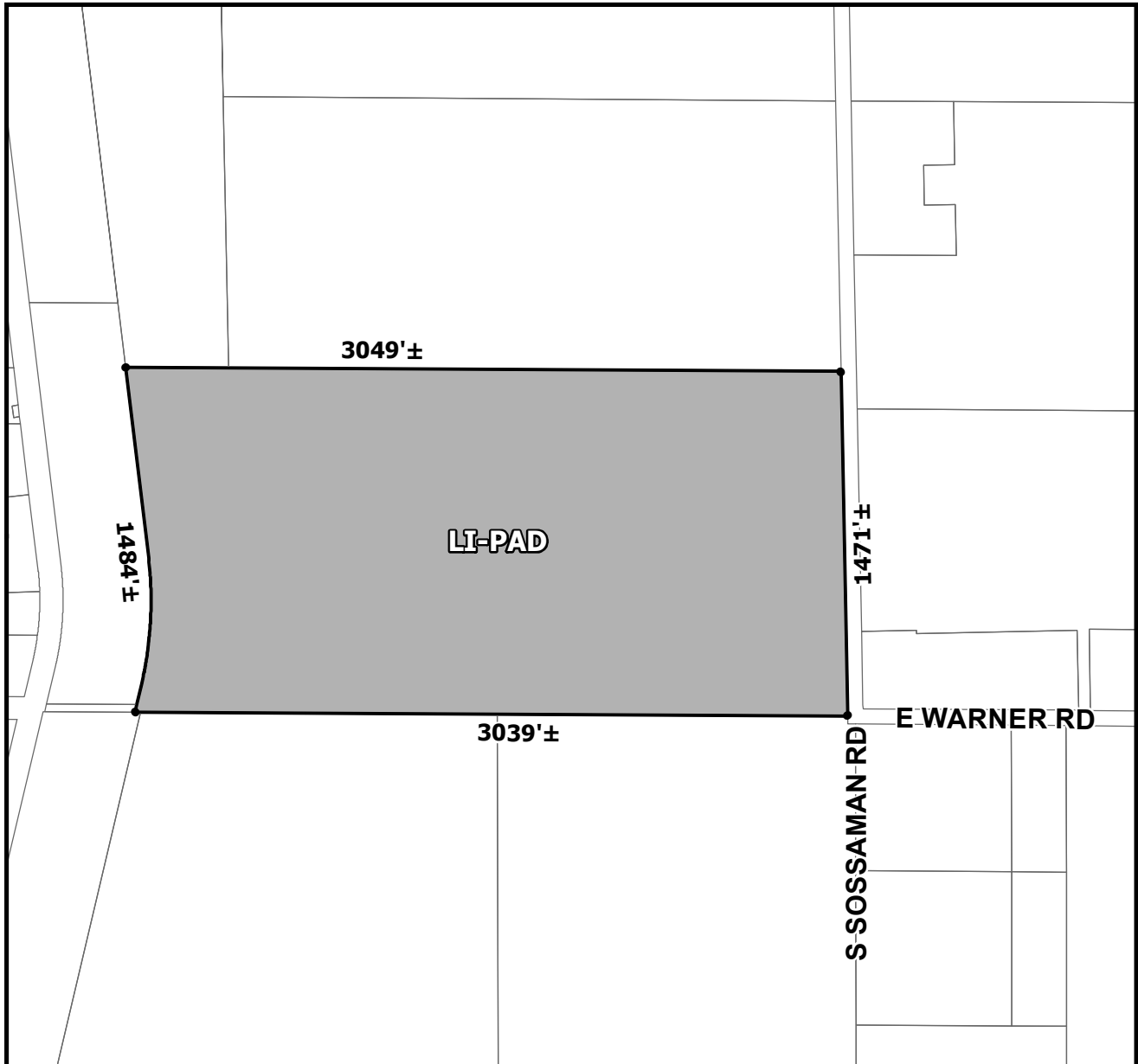




OFFICIAL SUPPLEMENTARY ZONING MAP AMENDING THE CITY OF MESA ZONING MAP



CASE: ZON21-00798
ACREAGE: 101.1±
REQUEST: REZONE FROM AGRICULTURE (AG) TO LIGHT INDUSTRIAL WITH A PLANNED AREA DEVELOPMENT OVERLAY (LI-PAD) AND SITE PLAN REVIEW. THIS REQUEST WILL ALLOW FOR AN INDUSTRIAL DEVELOPMENT.
ORDINANCE: _____

Please be advised that the attached zoning changes were approved by the Mesa City Council on _____, 2021 by Ordinance # _____. If you have any questions concerning these changes, contact the City of Mesa Planning Division at 480-644-2385.

_____ **ATTEST:** _____ **DATE:** _____
MAYOR **CITY CLERK**