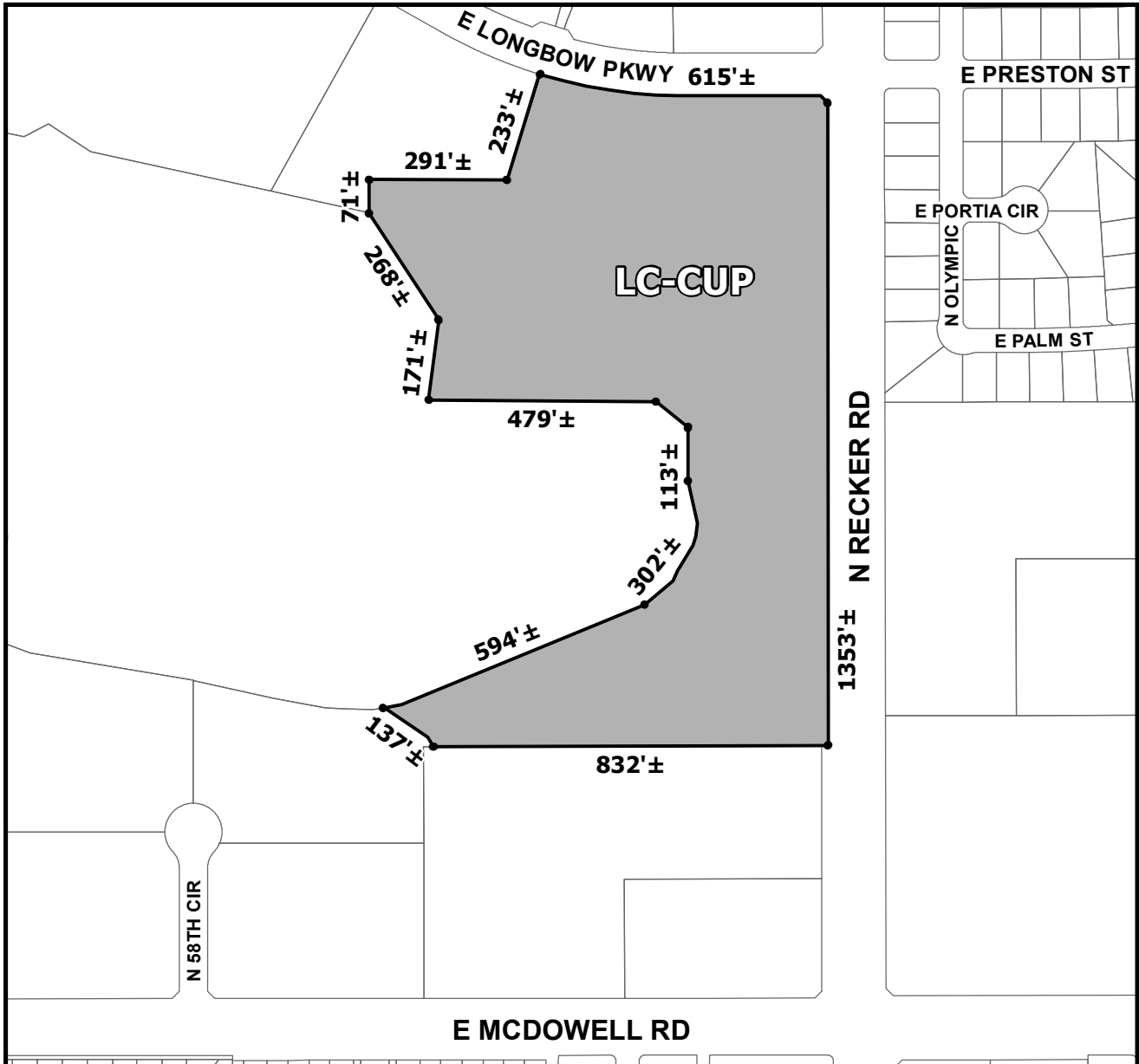




**OFFICIAL SUPPLEMENTARY ZONING MAP
AMENDING THE CITY OF MESA ZONING MAP**



CASE: ZON21-00731
ACREAGE: 20±
REQUEST: MODIFICATION OF THE LONGBOW PARK PLANNED AREA DEVELOPMENT OVERLAY (LONGBOW PARK PAD); REZONE FROM LIGHT INDUSTRIAL (LI) TO LIMITED COMMERCIAL (LC), COUNCIL USE PERMIT (CUP) AND SITE PLAN REVIEW.

ORDINANCE: _____

Please be advised that the attached zoning changes were approved by the Mesa City Council on _____, 2022 by Ordinance # _____. If you have any questions concerning these changes, contact the City of Mesa Planning Division at 480-644-2385.

MAYOR

ATTEST: CITY CLERK

DATE: