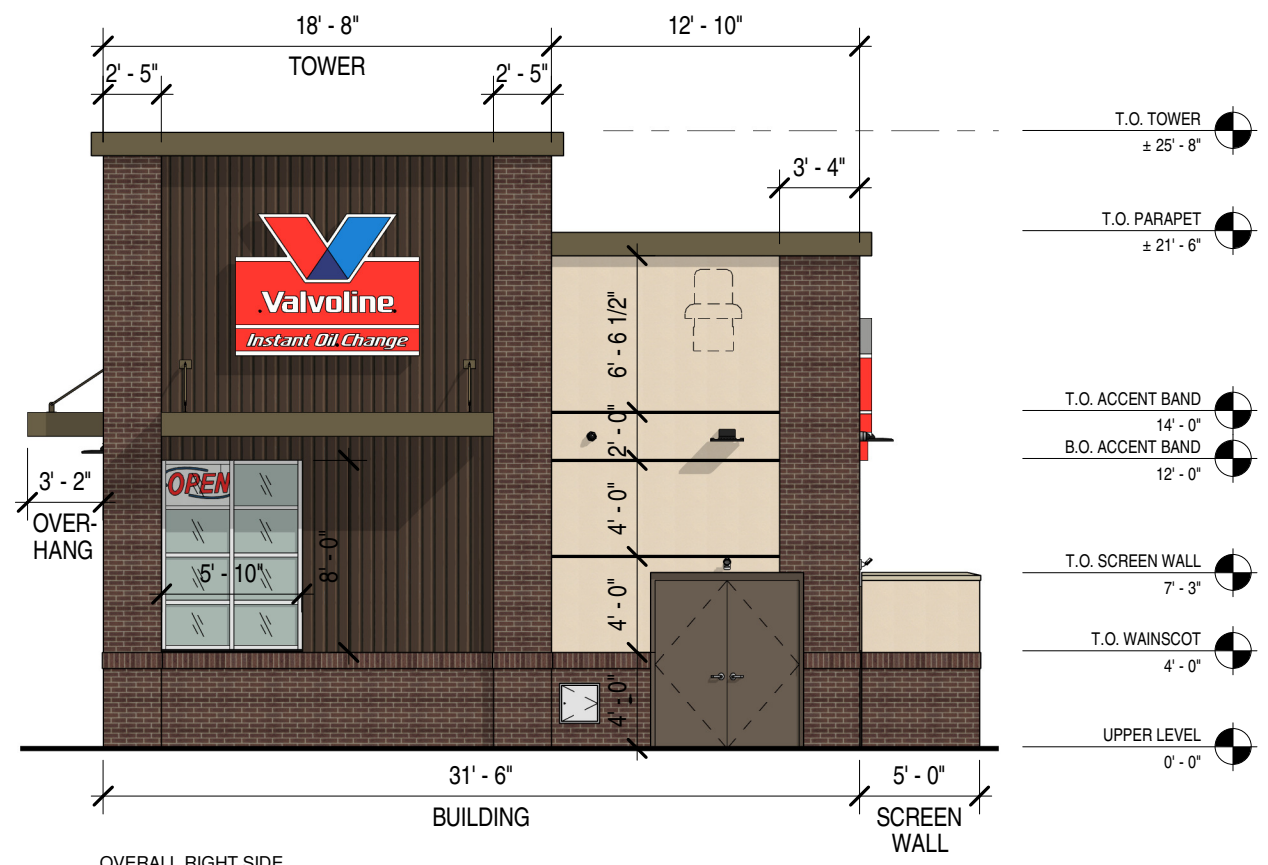


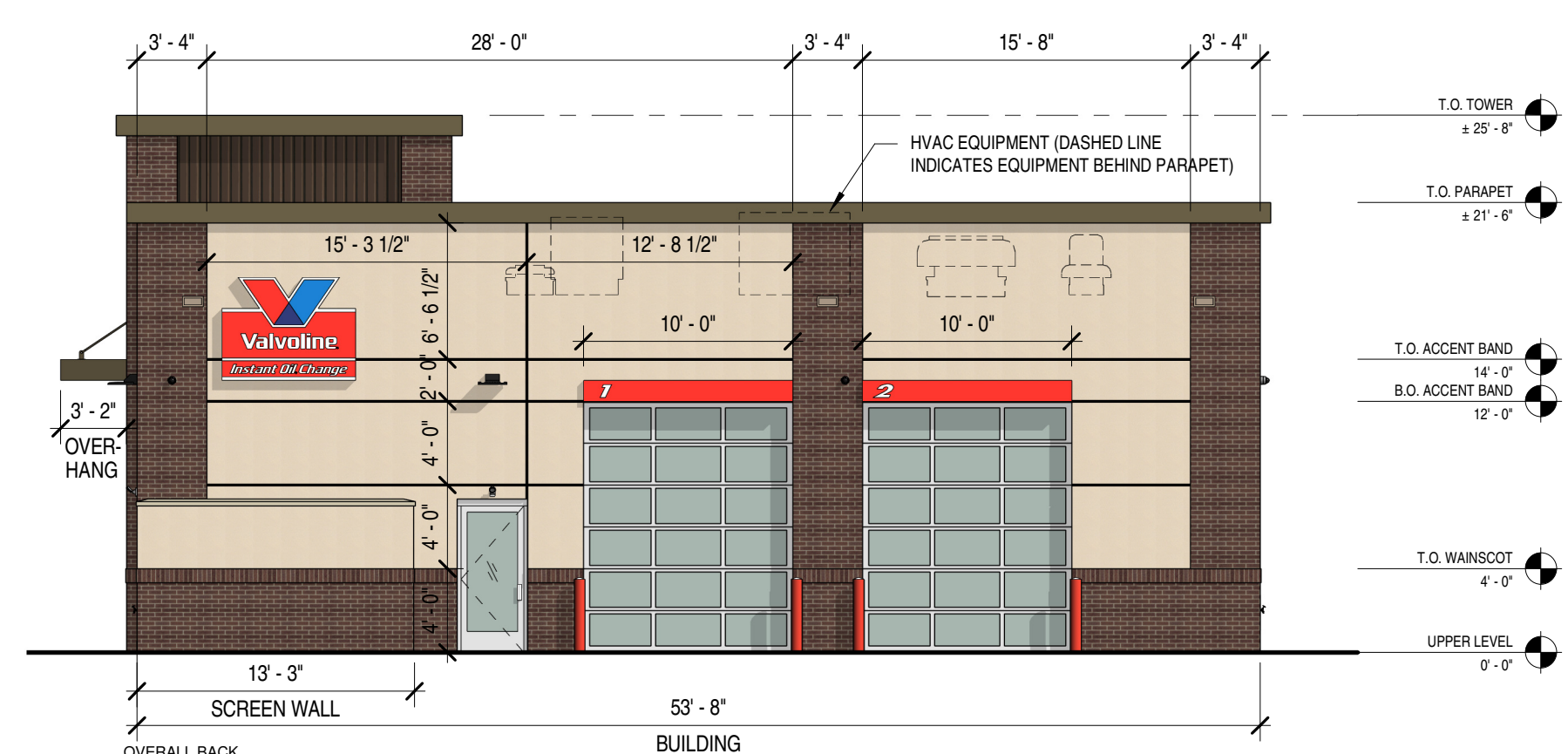
ISSUE RECORD
ISSUANCE #1
ISSUANCE #2
ISSUANCE #3
DATE
02/13/2024
03/05/2024
04/11/2024

**VALVOLINE INSTANT OIL CHANGE**  
**1330 SOSSAMAN ROAD**  
**MESA, AZ 85209**



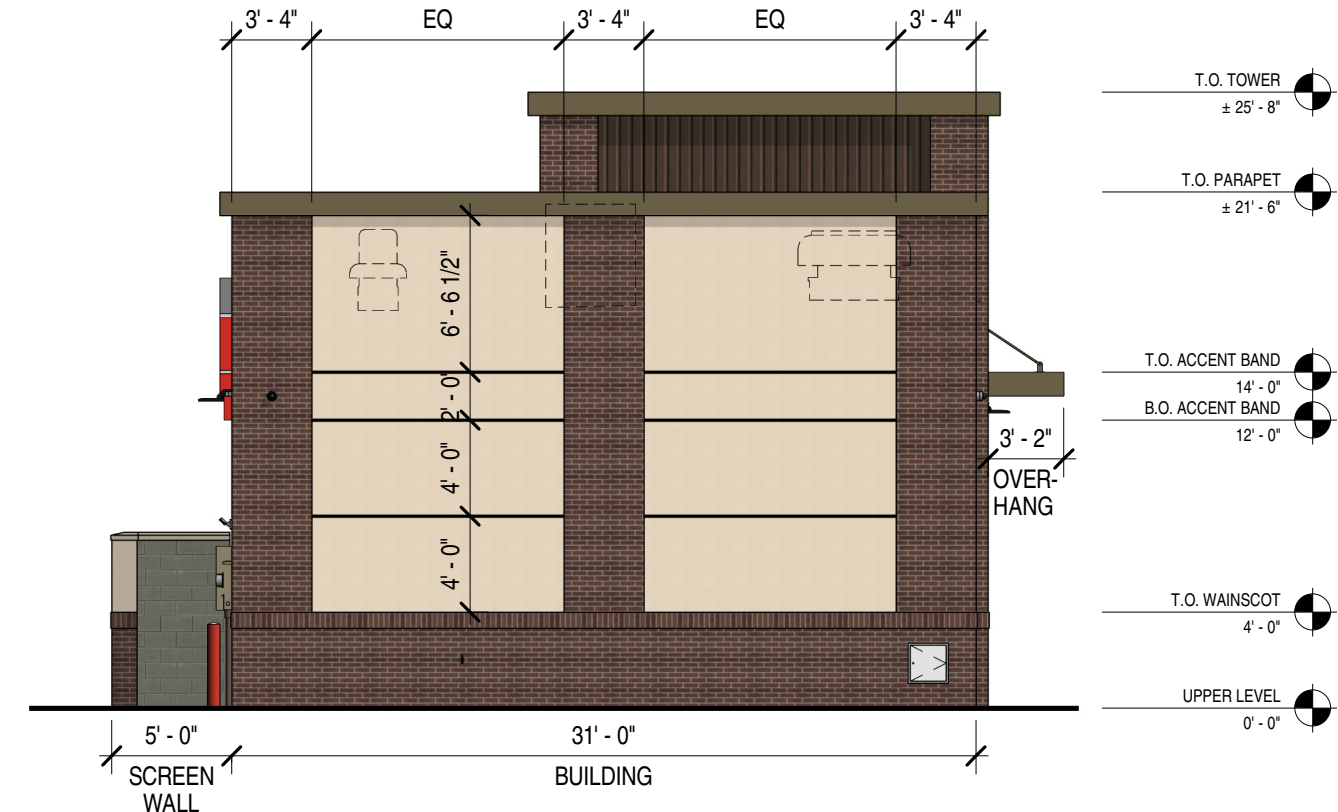
2 OVERALL RIGHT SIDE EXTERIOR ELEVATION (RIGHT)  
 Scale: 1/8" = 1'-0"

FINISH MATERIAL	AREA OF MATERIAL	PERCENTAGE OF TOTAL FACADE
BRICK MASONRY	253.6	32.3%
EIFS	164.1	20.9%
METAL WALL PANELS	225.5	28.7%
GLAZING - STOREFRONT & OVERHEAD DOORS	46.8	6.0%
MISC. - CANOPY, TRIM, AND DOORS & ACCESS PANELS	95.6	12.2%
TOTAL	785.6	100.0%



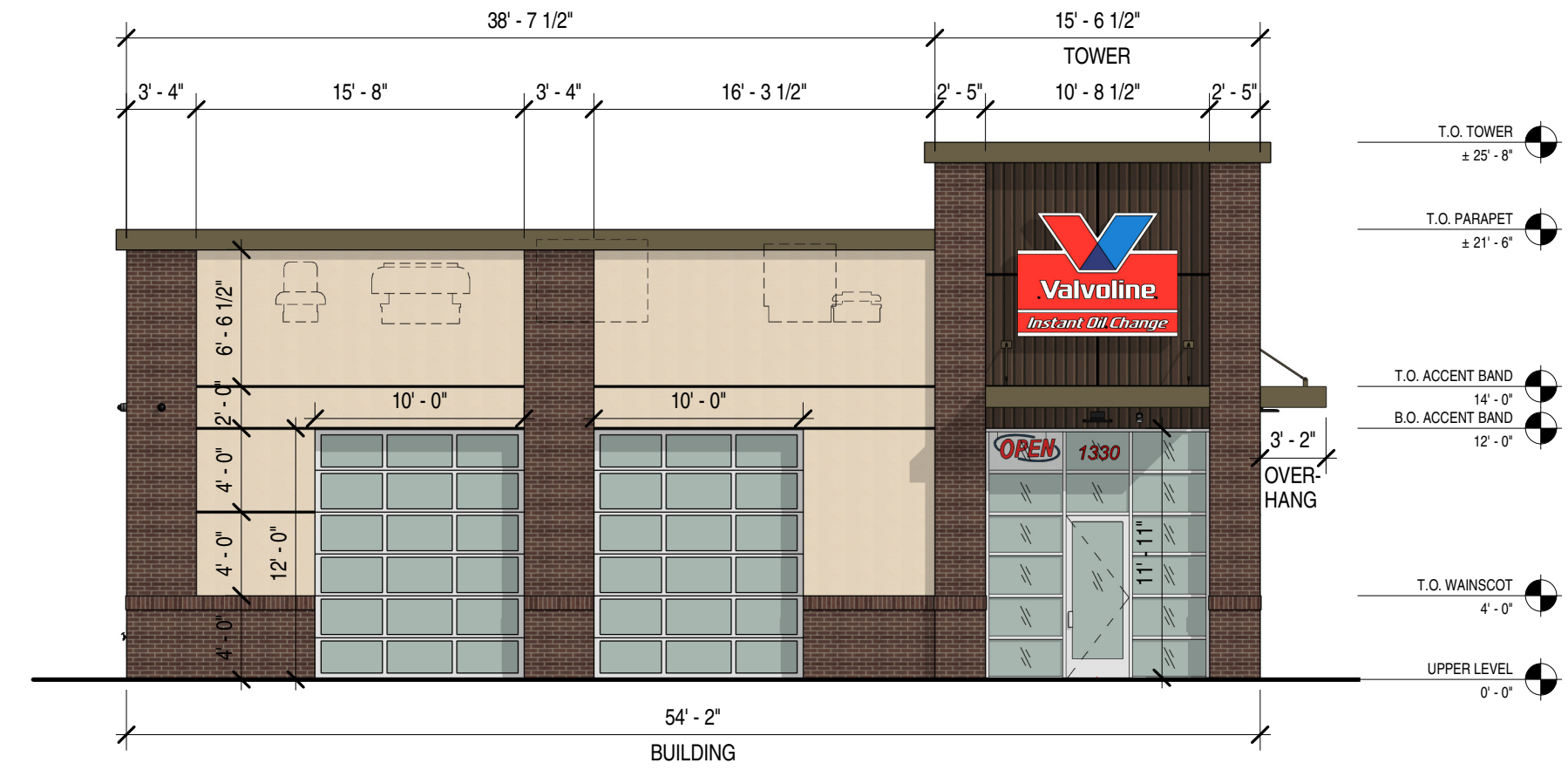
1 OVERALL BACK EXTERIOR ELEVATION  
 Scale: 1/8" = 1'-0"

FINISH MATERIAL	AREA OF MATERIAL	PERCENTAGE OF TOTAL FACADE
BRICK MASONRY	738.9	45.0%
EIFS	608.2	37.0%
METAL WALL PANELS	34.2	2.1%
GLAZING - STOREFRONT & OVERHEAD DOORS	262.3	16.0%
MISC. - CANOPY, TRIM, AND DOORS & ACCESS PANELS	0.0	0.0%
TOTAL	1643.6	100.0%



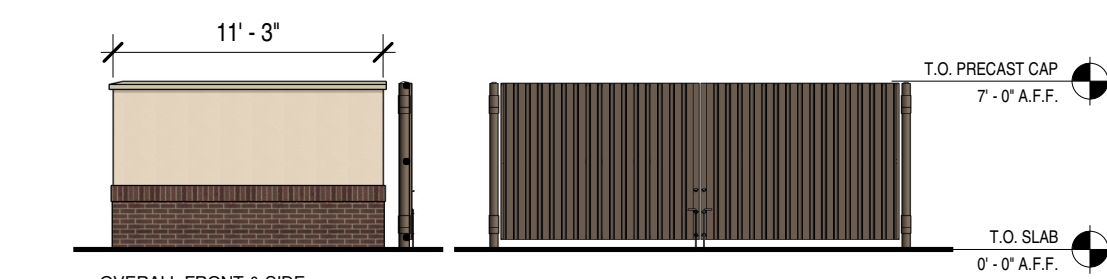
4 OVERALL LEFT SIDE EXTERIOR ELEVATION (LEFT)  
 Scale: 1/8" = 1'-0"

FINISH MATERIAL	AREA OF MATERIAL	PERCENTAGE OF TOTAL FACADE
BRICK MASONRY	314.8	43.2%
EIFS	347.0	47.7%
METAL WALL PANELS	44.2	6.1%
GLAZING - STOREFRONT & OVERHEAD DOORS	0.0	0.0%
MISC. - CANOPY, TRIM, AND DOORS & ACCESS PANELS	22.0	3.0%
TOTAL	728.0	100.0%



3 OVERALL FRONT EXTERIOR ELEVATION  
 Scale: 1/8" = 1'-0"

FINISH MATERIAL	AREA OF MATERIAL	PERCENTAGE OF TOTAL FACADE
BRICK MASONRY	304.0	24.7%
EIFS	369.2	30.0%
METAL WALL PANELS	125.1	10.2%
GLAZING - STOREFRONT & OVERHEAD DOORS	368.5	29.9%
MISC. - CANOPY, TRIM, AND DOORS & ACCESS PANELS	64.2	5.2%
TOTAL	1231.0	100.0%



5 OVERALL FRONT & SIDE TRASH ENCLOSURE ELEVATIONS  
 Scale: 1/8" = 1'-0"

EXTERIOR FINISHES - BRICK / EIFS			
EXTERIOR INSULATED FINISH SYSTEM:	DRYVIT (SANDBLE FINE) COLOR: E.I.F.S. 1 = #113 AMARILLO WHITE	METAL CANOPY:	AWNEX CANOPY SYSTEM - COLOR TO MATCH PAC-CLAD "MEDIUM BRONZE"
FACE BRICK: (WAINSCOT)	BELDEN - "MODULAR MIDLAND BLEND"	COPING, SOFFIT & TRIM:	PAC-CLAD SNAP EDGE EXTENDED FASCIA (12-1/2") AND VENTED SOFFIT AND TRIM COLOR TO MATCH PAC-CLAD "MEDIUM BRONZE"
PRECAST CAP:	CUSTOM CAST STONE - "LIGHT BUFF"	ROOF SCUPPERS & DOWNSPOUTS:	DIMENSIONAL METALS, INC. - "BEIGE"
MORTAR:	LEHIGH STANDARD KIT - "BEIGE"	METAL WALL PANELS:	METAL SALES MANUFACTURING "IMAGE II" 7/8" CORRUGATED WALL PANELS COLOR: "MEDIUM BRONZE (H4)"
MASONRY SEALER:	ALL MASONRY SURFACES SHALL BE TREATED w/ SEALER.	STOREFRONT SYSTEM:	2x4 1/2" KAWNEER TRIFAB VG 451T SERIES CLEAR ANODIZED ALUMINUM STOREFRONT SYSTEM w/ 1" INSULATED GLAZING.
		H.M. DOORS & FRAMES:	FIELD PAINT W/ SHERWIN-WILLIAMS 866-1300 PRO-CYRL PRIMER FOLLOWED BY (2) FINISH COATS OF 866-300 SHER-CYRL HPA. COLOR SHALL BE SW-7515 "HOMESTEAD BROWN". PROVIDE MOCK-UP AND VERIFY COLOR W/ OWNER
		O.H. DOOR FINISH:	CLEAR ANODIZED ALUMINUM
		ACCESS PANEL:	STAINLESS STEEL

