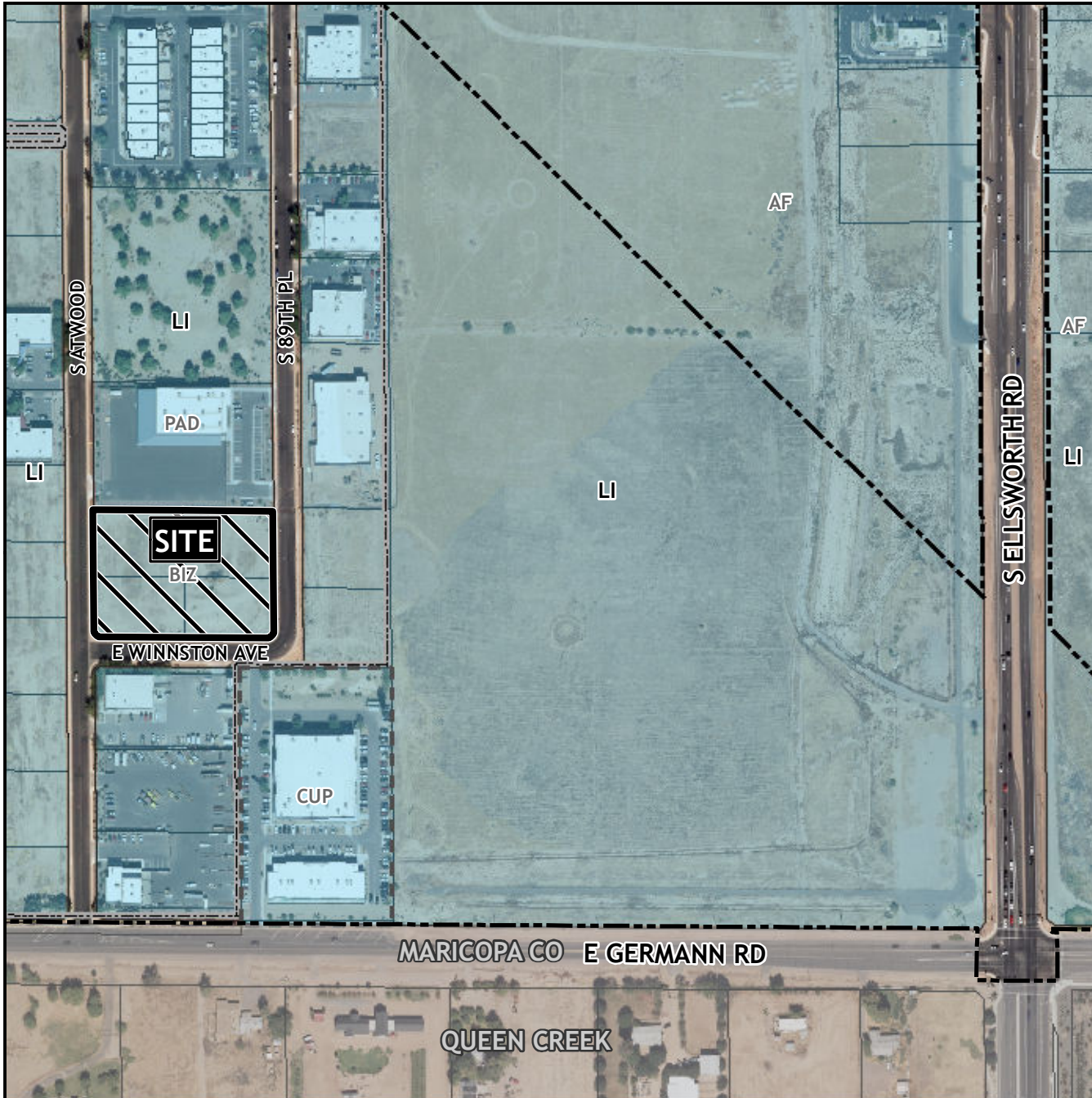


Planning and Zoning Vicinity Map: ZON24-00277

Case Details



CASE:

ZON24-00277

SITE / ADDRESS:

(District 6). Within the 7400 block of South 89th Place (west side), within the 8900 block of East Winnston Avenue (north side), and within the 7400 block of South Atwood (east side). Located west of Ellsworth Road and north of Germann Road. (2.4± acres).

REQUEST:

Rezone from Light Industrial with a Planned Area Development overlay and a Bonus Intensity Zone overlay (LI-PAD-BIZ) to Light Industrial with a PAD overlay and a new Bonus Intensity Zone overlay (LI-PAD-BIZ) and Major Site Plan Modification

