



Design Review Board



DRB24-00408

SRP Hangar at Falcon Field

Josh Grandlienard, Senior Planner

June 11, 2024



Request

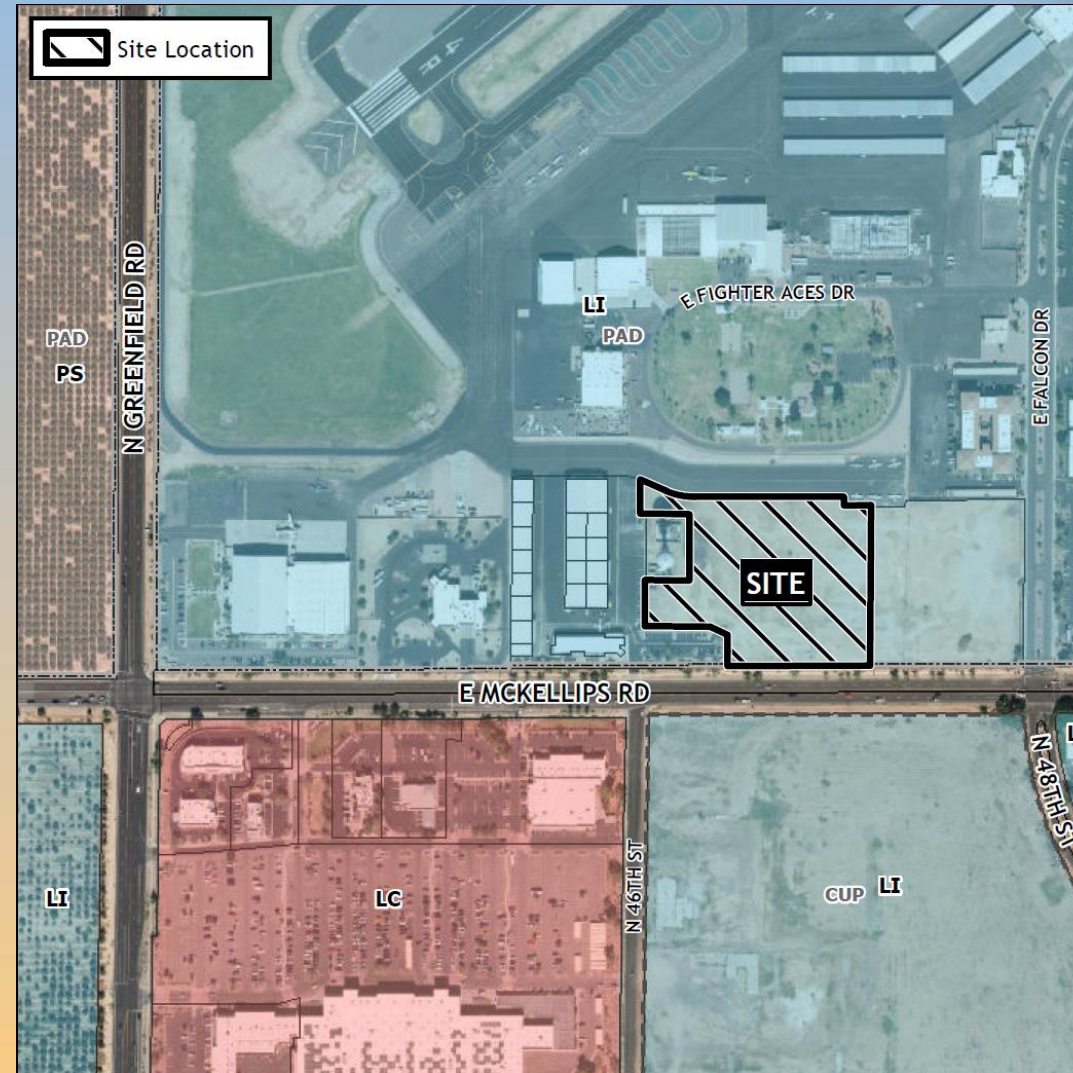
- Design Review
- To allow for a hangar





Location

- East of Greenfield Road
- North of McKellips Road





Site Photo

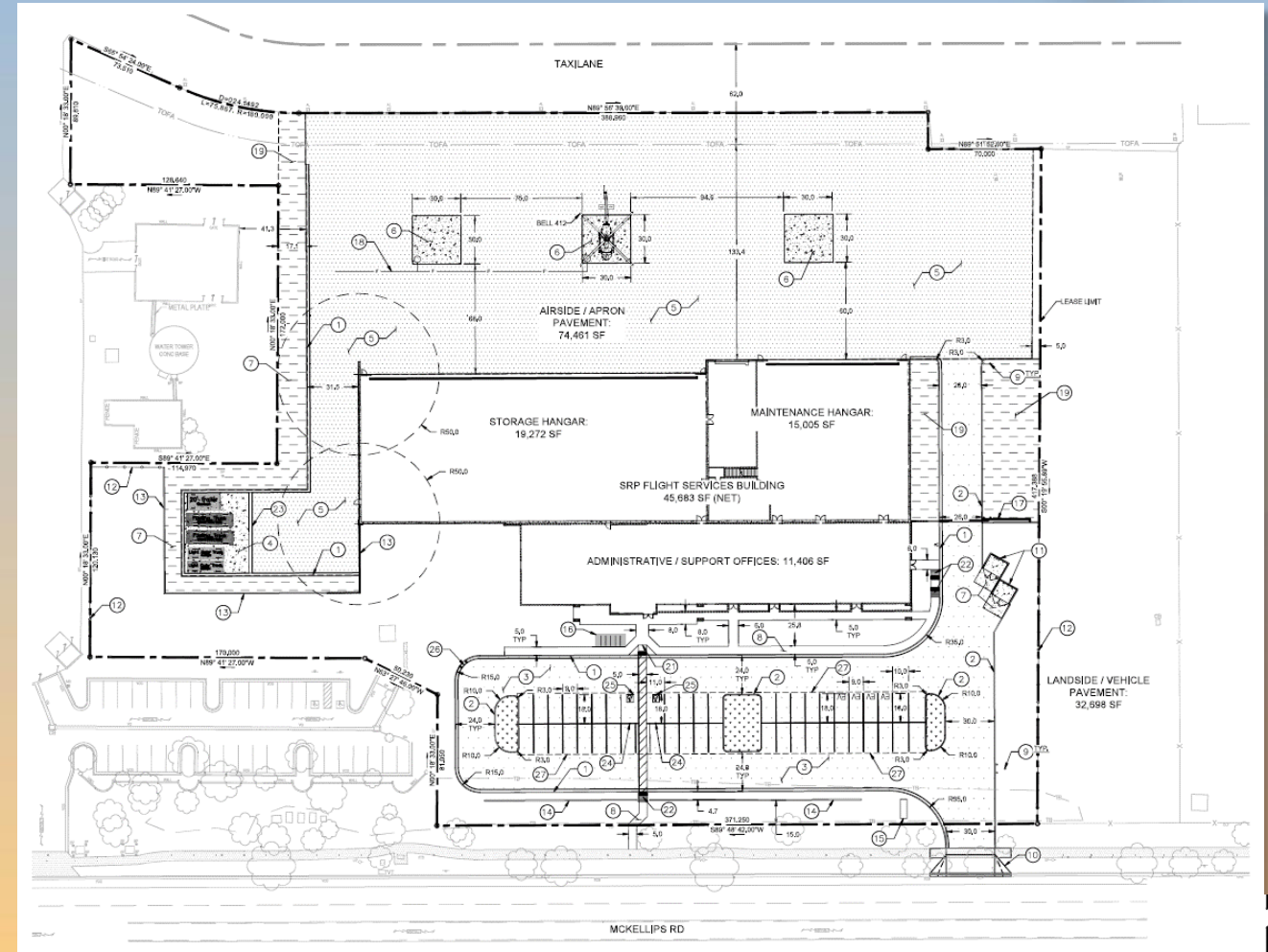


Looking north from McKellips Road



Site Plan

- Hangar proposed for Falcon Field
- Vehicular access to the site is provided from McKellips Road
- 44 parking spaces provided





Landscape Plan

MASTER PLANT SCHEDULE						
TREES *TREES SHALL MEET MINIMUM CALIPER SIZE OR WILL BE REJECTED-BOX SIZE LISTED IS FOR REFERENCE ONLY ** PER TABLE 11-33-2-E C.O.M. TITLE 11, ARTICLE 4, CHAPTER 33 *** MIN. STD TRUNK HEIGHT SHALL BE 3' ABOVE ROOTBALL						
SYMBOL	QTY.	BOTANICAL NAME / COMMON NAME	MIN. CONTAINER SIZE *	MIN. CALIPER	MIN. SIZE HT./W.D.	** CREDIT SF MATURITY SIZE
⊕	3	ACACIA SALICINA / WILLOW ACACIA	24" BOX	1.25"	6"x3.5" STD	100SF 30'x15' (EVERGREEN)
⊕	3	CAESALPINA CACALADO "SMOOTHIE" CASALDOTE (THORNLESS VARIETY)	25 GAL OR 24" BOX	1.25"	***6"x3" SEMI-STD	50SF 20'x20"
⊕	7	CHILOPSIS LINEARIS "BURGUNDY" OR OTHER COLOR OF SIMILAR SIZE	24" BOX	1.25"	***6"x3" SEMI-STD	50SF 20'x20"
⊕	6	PARKINSONIA (CERRODUM) PRAECOX PALO BREA	24" BOX	1.25"	***6"x3.5" SEMI-STD	50SF 25'x25' (SHADE TREE)
⊕	4	PROSPERIS X SEEDLESS "AZT" SEEDLESS HYBRID MESQUITE	24" BOX	1.25"	***6"x3.5" SEMI-STD	50SF 30'x30" (SHADE TREE)
⊕	2		36" BOX	2.5"		

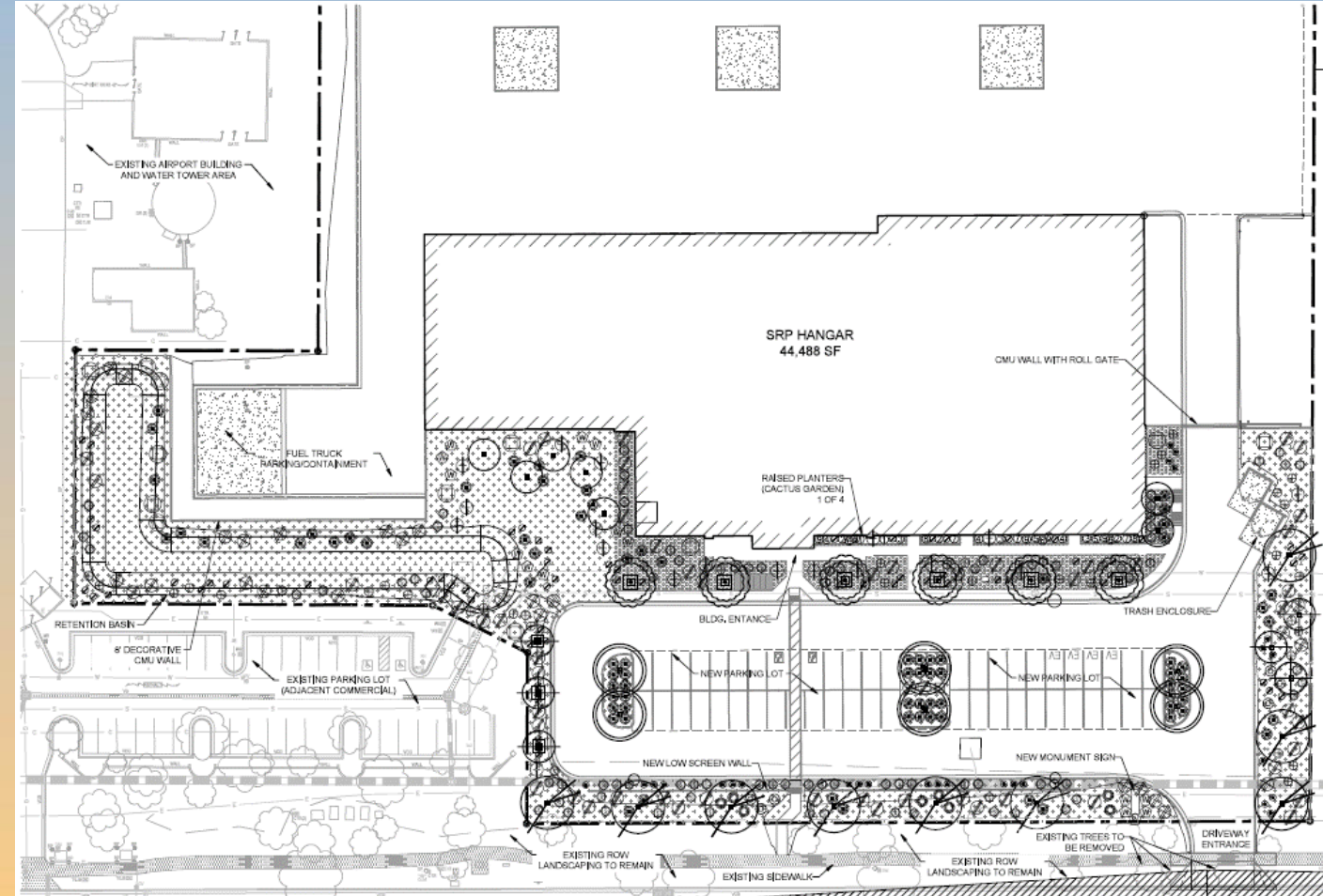
SHRUBS						
SYMBOL	QTY.	BOTANICAL NAME	COMMON NAME	CONTAINER SIZE	MINIMUM SIZE (HT./W.D.)	** MATURE SIZE (H/W)/CREDIT SF
⊕	59	CHRYSANTHEMUM MEXICANA	DAMNATA	5 GAL	8"x8"	12'x18'/10SF
⊕	15	CASTYRION WHEELERII	DESERT SPOON	5 GAL	8"x12"	3'x5'/10SF
⊕	6	EREMOPHILA HYDROPHILA "BLUEBELLS"	BLUEBELLS OR BLUE FLM BUSH	5 GAL	10"x12"	4'x5'/25SF
⊕	8	EREMOPHILA GLABRA SSP CAENDISA "WINTER BLAZE" (S)	WINTER BLAZE EREMOPHILA	5 GAL	12"x12"	3'x4.5'/10SF
⊕	19	EUPHORBIA ROIDA	COYOTE PLANT	5 GAL	12"x12"	3'x4.5'/25SF
⊕	84	HESPERALOE X PERRU PP#21728	PINK PARADE YUCCA (S)	5 GAL	12"x12"	4'x4'/25SF
⊕	38	JUSTICIA CALIFORNICA	CHUPAROSA	5 GAL	12"x12"	4'x4'/25SF
⊕	53	LEUCOPHYLLUM LANGMANNAE "ROO BRAND"	TEXAS SAGE ROO BRAND	5 GAL	10"x10"	4'x5'/25SF
⊕	27	RUELLIA BRITANNICA	PURPLE RUELLIA	5 GAL	8"x8"	3'x3'/10SF
⊕	12	TECOMA STANS	YELLOW BELLS	5 GAL	14"x12"	8'x8'/25SF

GROUNDCOVERS						
SYMBOL	QTY.	BOTANICAL NAME	COMMON NAME	CONTAINER SIZE	MINIMUM SIZE (HT./W.D.)	** MATURE SIZE (H/W)/CREDIT SF
⊕	80	EREMOPHILA GLABRA WINGENAE GOLD' (S)	OUTBACK SUNRISE EMU	5 GAL	10"x10"	2.5'x5'/25SF
⊕	34	LANTANA MONTIVIRENSIS "YELLOW TRAILING"	TRAILING LANTANA	5 GAL	10"x10"	2.5'x5'/25SF

CACTUS/AGAVE PLANTERS						
SYMBOL	QTY.	BOTANICAL NAME	COMMON NAME	CONTAINER SIZE	MINIMUM SIZE (HT./W.D.)	** MATURE SIZE (H/W)/CREDIT SF
⊕	2	AGAVE AMERICANA X MEXICANA ALBA	CENTER STRIPE CENTURY PLANT	5 GAL		4'x4'
⊕	3	AGAVE GEMINFLORA	TWIN FLOVERED AGAVE	5 GAL		3'x3'
⊕	3	AGAVE OVATIFLORA "FROSTY BLUE"	WHALES TONGUE AGAVE	5 GAL		3'x4'
⊕	3	ALOE X "BLUE ELF"	BLUE ELF ALOE	5 GAL		1'x2'
⊕	2	ECHINOCACTUS CRUSONII	GOLDEN BARREL CACTUS	5 GAL		2'x2'
⊕	5	ECHINOCACTUS ENGLERIANI	MEXICAN CACTUS	5 GAL		1'x1'
⊕	3	OPUNTIA BICOLOR	TEDDY BEAR CHOLLA	5 GAL		4'x3'
⊕	2	OPUNTIA VIOLEACEA "SANTA RITA"	SANTA RITA PRICKLY PEAR	5 GAL		4'x4'
⊕	3	TRICHOCACTUS TERSEGGOKI	SAN PEDRO CACTUS	5 GAL		10'x3'

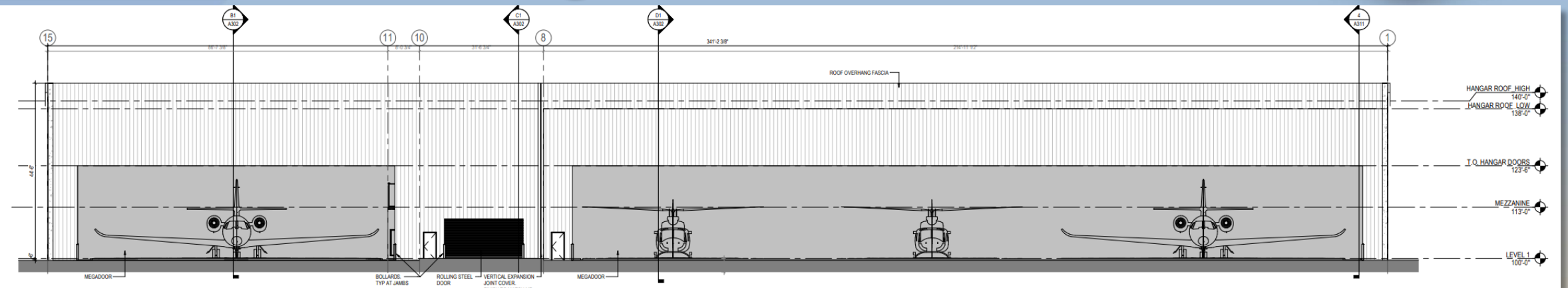
LANDSCAPE INFORMATION						
LANDSCAPE REQUIREMENTS PER CITY OF MESA TITLE 11, ARTICLE 4, CHAPTER 33 (R.O.W. AND PARKING LOT ONLY) REQUIRED:				TOTAL PLANTERS: 41,570 SF		
TREE SIZE:	24" BOX	24" BOX	NOTE A: RIGHT OF WAY (STREET FRONTAGE) HAS EXISTING LANDSCAPING/ROCK COVER TO REMAIN AND PROTECT IN PLACE. NO NEW IMPROVEMENTS PROPOSED.			
SHRUB/GROUND COVER SIZE:	24" BOX	5 GAL				
BOW-WALK/ELLS ROAD (A)	(13) TREE/25 LF	(32) SHRUBS/TREE	6 - SEE NOTE A&B			
TREES:			61 - SEE NOTE A&B			
SHRUBS:						
PLANTER GROUND COVER:	100% D.G. ROCK	100% PROVIDED	NOTE B: WITHIN PROPERTY LIMITS, ADDING ADDITIONAL PLANTS TO MEET MINIMUM TREES AND SHRUBS REQUIRED FOR FRONTAGE OF PER C.O.M. TITLE 11.			
PARKING LOT:	(1) TREE/15' ISLAND	(6) 80% 24" BOX	(4) 24" BOX			
	(1) TREE/30" BOX	(1) 10% 36" BOX	(4) 36" BOX			
	(3) SHRUBS PER TREE	(3) 5 GAL	(3) 5 GAL			

LANDSCAPE ROCK GROUND COVER			
KEY:	DESCRIPTION	KEY:	DESCRIPTION
⊕	ROCK TYPE A 3/4"-IN SCREENED DECOMPOSED GRANITE COLOR: GOLD, DEPTH 2"-IN 36,440 SF	⊕	ROCK TYPE B 3/4"-IN SCREENED DECOMPOSED GRANITE COLOR: APACHE BROWN, DEPTH 2"-IN 5,130 SF

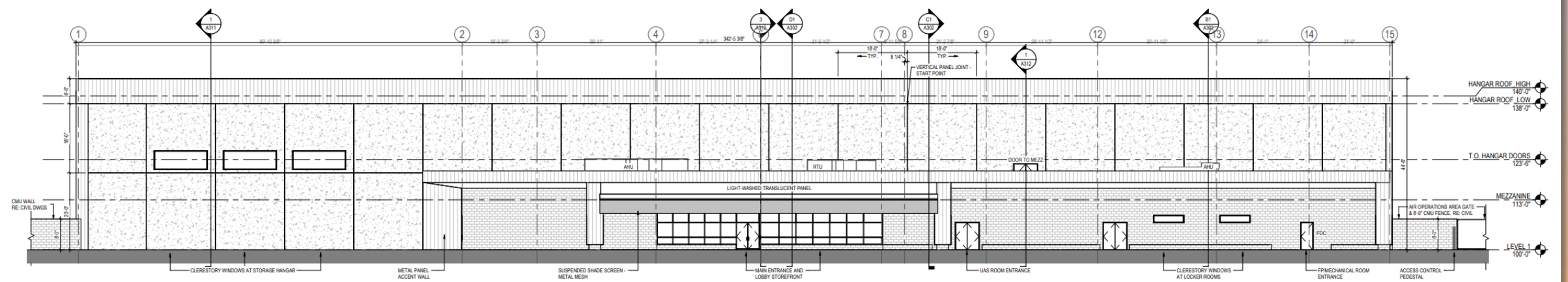




Building Elevations



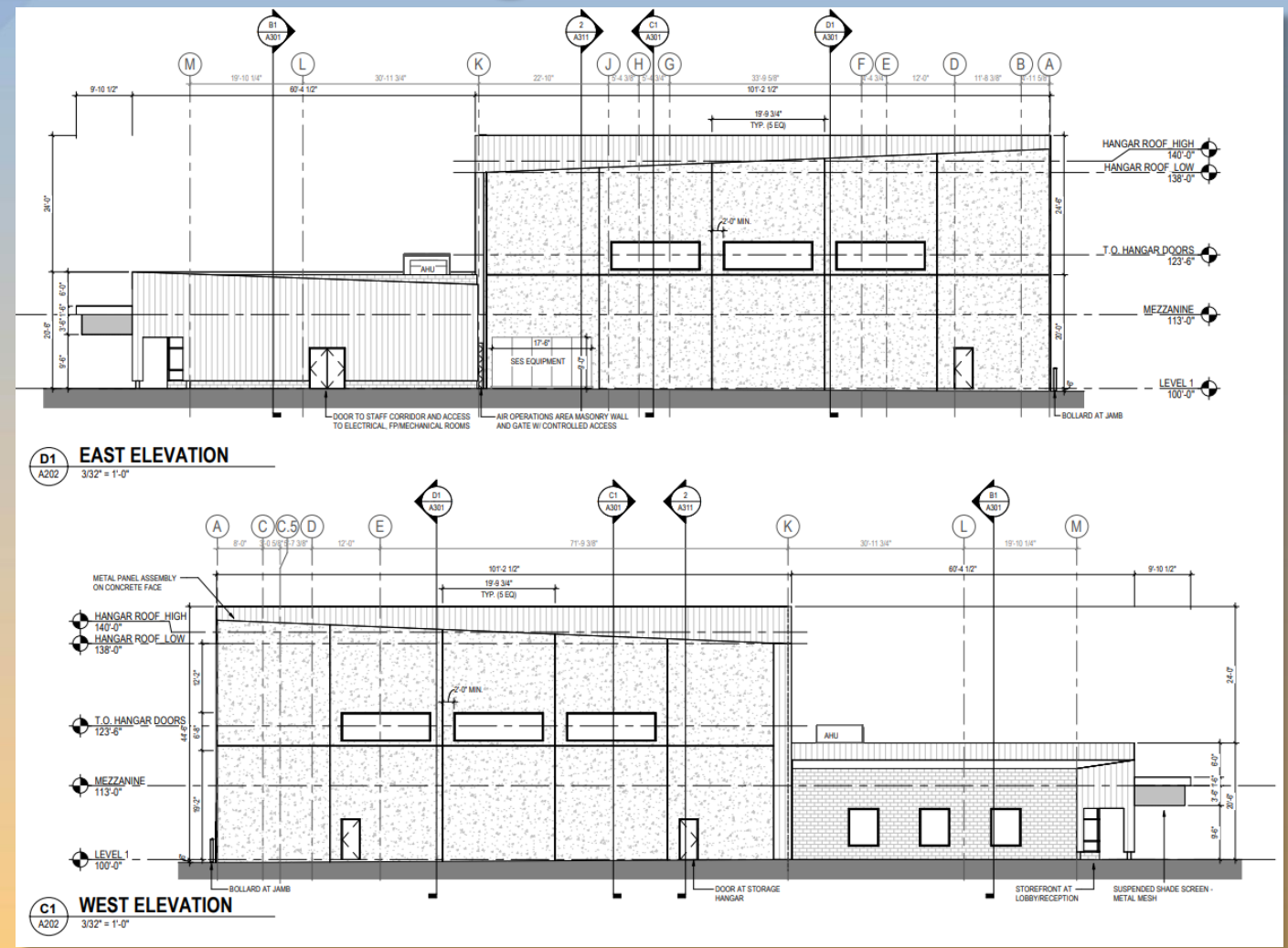
D1 NORTH ELEVATION
A201 3/32" = 1'-0"



C1 SOUTH ELEVATION
A201 3/32" = 1'-0"



Building Elevations





Site Rendering





Site Rendering





Colors and Materials



Field color

CONC-1
 Description: Integrally colored insulated concrete tilt-up panels.
 Manufacturer: Silbman Colors
 Field Color: Alabaster
 Finish: smooth finish
 *Aircraft Silhouettes created by reveals set into tilt-up walls, lighter color as shown created by sand blasted surface treatment



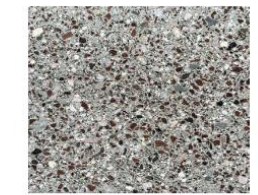
MP-1
 Description: Aluminum metal panel rainscreen assembly
 Color: ValsparFluoroon Classic II 369C6724 Mica Grey
 Size: 10' wide flat panels



GL-1
 Description: Insulated glazing unit in clear anodized aluminum frame
 Manufacturer: Vitro / Kawneer
 Color: Tinted glazing, Solarban 70(2) / Solexia



Southwest perspective, flight graphics integrated into tilt-up wall panels (final graphics TBD)



CMU-1
 Description: Integrally colored ground face masonry with center score
 Manufacturer: Trendstone
 Color: Palo Verde



ACRY-1
 Description: Colored acrylic panel at main entry. (Translucent - with back or top lighting)
 Manufacturer: Acrylite
 Color: Blue 5160-4



PER-1
 Description: Perforated panels at front canopy
 Manufacturer: MoNichols
 Color: Clear Anodized Aluminum



WD-1
 Description: Wall and soffit accent panels (metal panel with simulated wood grain pattern) at front entrance
 Manufacturer: Stonewood
 Color: Ashville Cherry



Southeast Perspective - looking at main entrance



Colors and Materials

tinted glazing (transparent & spandrel)

aluminum storefront frame (clear anodized)

GL-1
Description: Insulated glazing unit in clear anodized aluminum frame
Manufacturer: Vitro / Kawneer
Color: Tinted glazing, Solarban 70(2) / Solexia



Northeast Perspective

MP-1
Description: Aluminum metal panel rainscreen assembly
Color: ValsparFluorpon Classic II 399C6724 Mica Grey
Size: 16" wide flat panels



Northwest Perspective

HS-1
Description: Vertical lifting fabric (roll-up) hangar doors
Manufacturer: ASSA ABLOY (MegaDoor)
Color: Bottom panel - Gray, remaining panels - Translucent

tinted glazing (transparent & spandrel)

aluminum storefront frame (clear anodized)

GL-1
Description: Insulated glazing unit in clear anodized aluminum frame
Manufacturer: Vitro / Kawneer
Color: Tinted glazing, Solarban 70(2) / Solexia



Alternative Compliance

- ✓ Materials. Facades shall incorporate at least 3 different materials
- ✓ Materials. No more than 50% of the façade may be covered with one single material



Findings

Staff is seeking your review and recommendation on the following:

- ✓ Proposed building elevations and landscape design
- ✓ Alternative Compliance for building materials

Staff welcomes any feedback



Design Review Board