

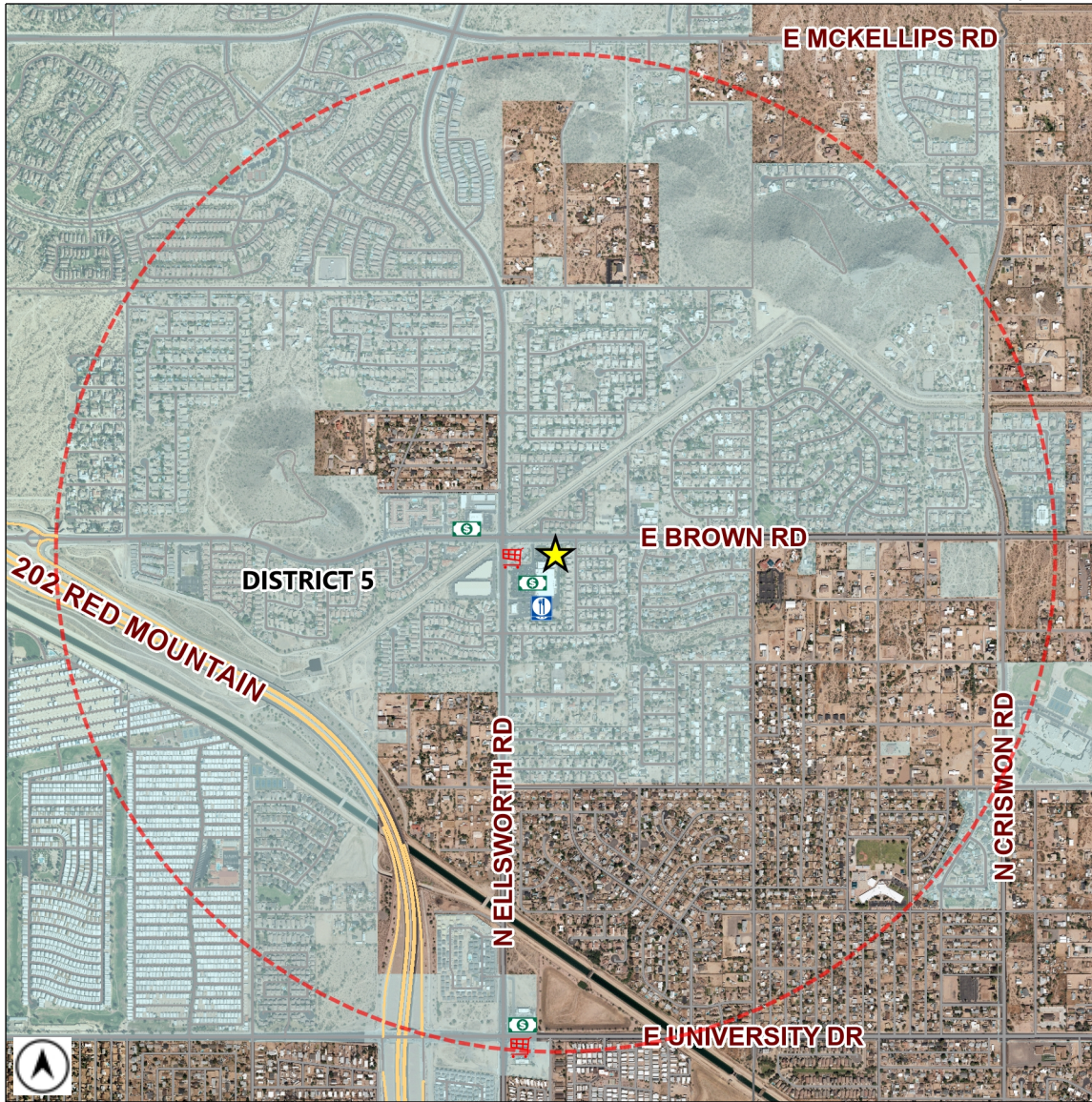


Liquor License Map

City of Mesa Tax & Licensing

Requesting Approval: **★ MR BREWS TAPHOUSE RED MOUNTAIN**
1157 N ELLSWORTH RD 101 - 103
 License Type: **RESTAURANT (PEND)**
 License Number: **LICA24-16050**

Estimated Population (1 Mile): **8053**
 Source: MAG ACS 2013-2017 5 year data



	BAR	0		CLUB	0		HOTEL-MOTEL	0		MICRO-BREWERY	0
	BAR (PEND)	0		CLUB (PEND)	0		HOTEL-MOTEL (PEND)	0		MICRO-BREWERY (PEND)	0
	BEER / WINE BAR	0		CONVEYANCE	0		IN-STATE PRODUCER	0		RESTAURANT	2
	BEER / WINE BAR (PEND)	0		CONVEYANCE (PEND)	0		IN-STATE PRODUCER (PEND)	0		RESTAURANT (PEND)	0
	BEER / WINE STORE	2		DOMESTIC FARM WINERY	0		LIQUOR STORE	3		WHOLESALE	0
	BEER / WINE STORE (PEND)	0		DOMESTIC FARM WINERY (PEND)	0		LIQUOR STORE (PEND)	0		WHOLESALE (PEND)	0
	BEER / WINE STORE / SAMPLING	0		GOVERNMENT	0		LIQUOR STORE / SAMPLING	0		1 MILE BUFFER	
	BEER / WINE STORE / SAMPLING (PEND)	0		GOVERNMENT (PEND)	0		LIQUOR STORE / SAMPLING (PEND)	0			

Total Count: 7 liquor licenses