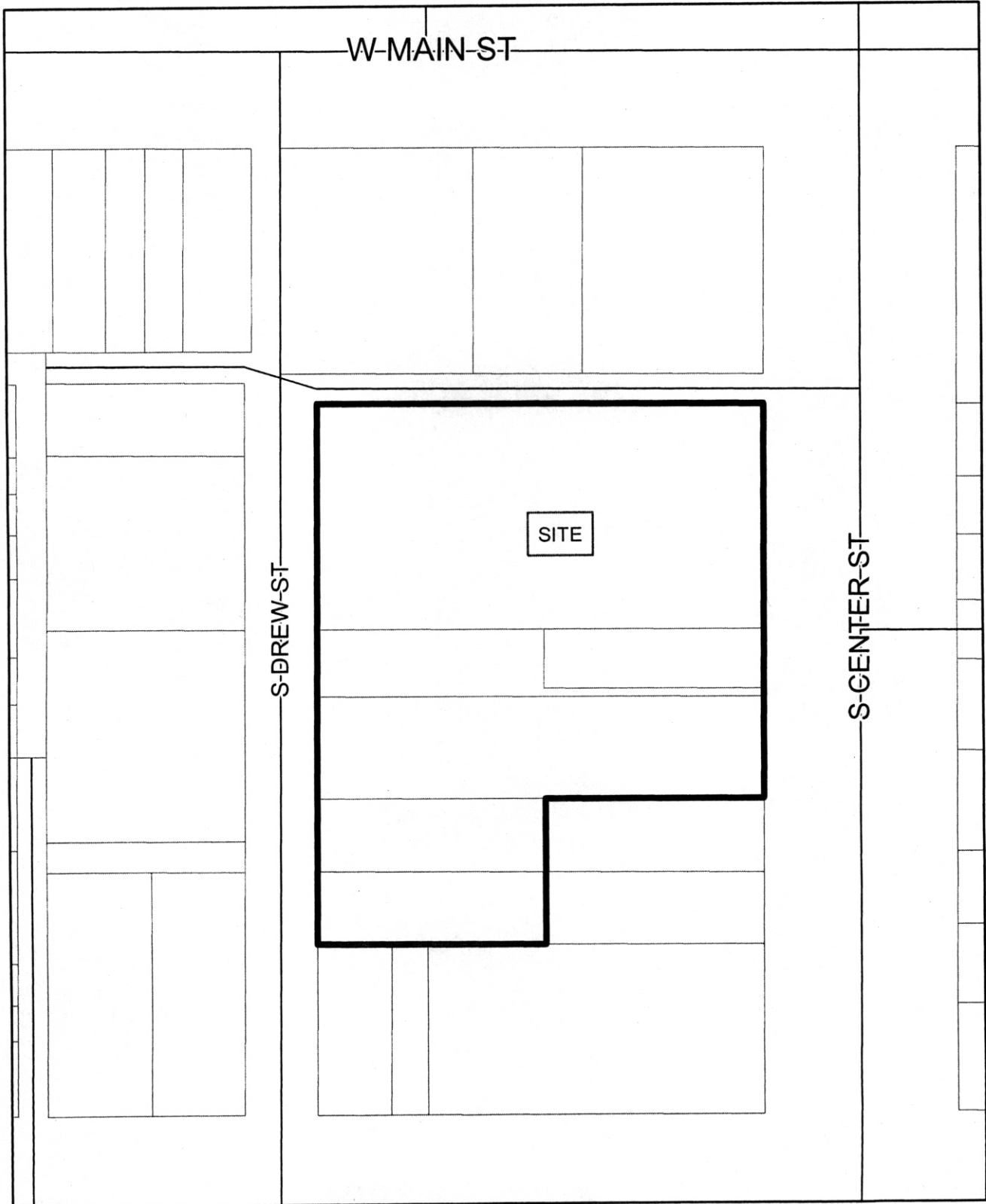


PLANNING AND ZONING VICINITY MAP



712-014

Z12-014

Z12-014

Z12-014

Z12-014



HERITAGE ACADEMY

"Building America's Heroes"

32 S. Center, Mesa, AZ 85210

5 January 2012

Project Narrative

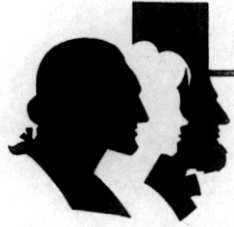
Heritage Academy is a public charter school serving approximately 600 students grades 7-12. In 2009, Heritage acquired three parcels with the purchase of the Luce building on 42 S. Center Street. One parcel holds a building which is now part of the school was included in a Council Use Permit (Case Number Z09-13) on 30 June 2009 and approved at a Regular Council Meeting on 8 July 2009. The two other parcels are not improved and were not included in the previous case.

Heritage is seeking to place a sport court on these two parcels for physical education programs at the school. The sport court would host three basketball courts. The courts would also have overlaid lines for either volleyball and/or tennis courts. Students would use the courts during school hours which are Monday – Thursday, 8:00 am – 3:30 pm during the months of August – May each year.

Construction on the project would be in two phases. The first phase would consist of a concrete slab with the court lines. This phase would also include the fencing and additional concrete work to complete missing pieces of sidewalks along North Drew Street. Fencing on the West side of the project would have the same look and feel as the ironwork along the other perimeter of the campus. Phase one would start immediately upon approval from the City with a goal to be ready for students by 1 August 2012.

The second phase would be the cover that would provide shade to the courts. During phase one, footings and fasteners would be included to reduce time and cost for a shade cover. A timeline for phase two has not been determined and would be re-submitted to the City for review.

Heritage hopes that by completing these courts, these lots would be more useful to the school and improve the look of the Downtown area.



HERITAGE ACADEMY

"Building America's Heroes"

32 S. Center, Mesa, AZ 85210

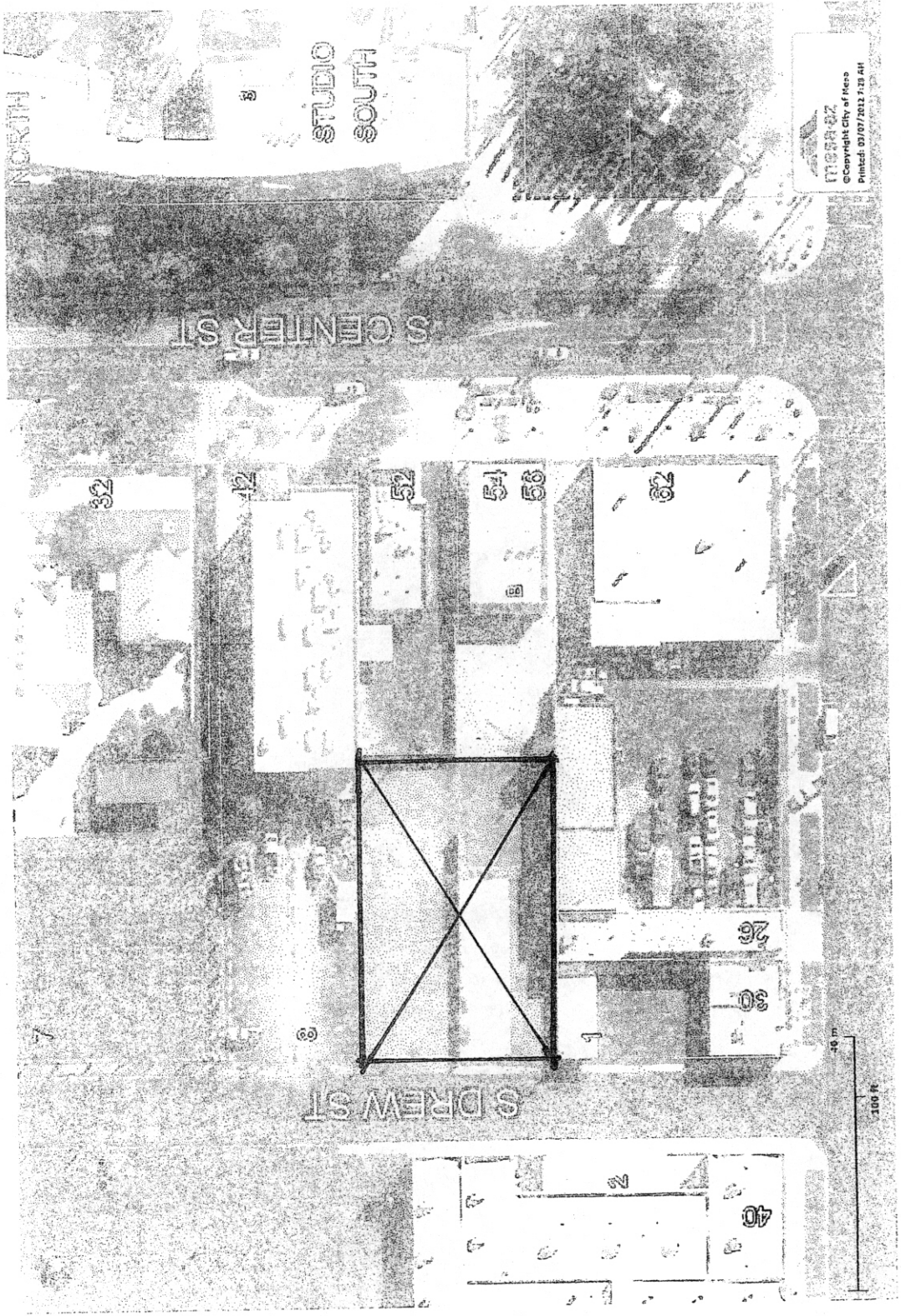
4 April 2012

Community Participation Plan Report

Heritage Academy is a public charter school serving approximately 600 students grades 7-12. In 2009, Heritage acquired three parcels with the purchase of the Luce building on 42 S. Center Street. One parcel has a building which is now part of the school was included in a Council Use Permit (Case Number Z09-13) on 30 June 2009 and approved at a Regular Council Meeting on 8 July 2009. The two other parcels are vacant and were not included in the previous case.

Heritage is seeking to place a sport court on these two parcels for physical education programs at the school. On 23 March, 2012, a notice of this meeting was sent to property owners within 500 feet of the school along with the letter concerning the council meeting. A notice was also posted on the front door at 32 S. Center on 4 April 2012. This notice will contain the general details concerning the time place and subject of the meeting.

As of 4 April 2012, no feedback from the letters has been received. A specific call was made to Brian Jeffery at the Mesa Fire Association as their building is directly adjacent to the proposed projects. This morning, Mr. Jeffery returned a call from a few days ago and left a message. A return call has been made, but a message was left as he was out of the office. We will eventually connect and forward any feedback received by Mr. Jeffery.



NORTH

STUDIO SOUTH

S CENTER ST

S DREW ST

MERRILL

© Copyright City of Merse
Printed: 03/07/2012 7:13 AM

32

42

52

54

56

62

26

30

40

100 FT

100 FT