



PLANT LEGEND

SYMBOL	SCIENTIFIC NAME	MATURE CANOPY	SIZE	QTY
	Acacia aneura	15' dia.	24" Box	22
	Mulga			
	Caesalpinia cacalaco	18' dia.	24" Box	18
	Cascalote 'Smoothie'			
	Chitalpa tashkentensis	25' dia.	36" Box	6
	Chitalpa			
	Parkinsonia praecox	25' dia.	24" Box	3
	Palo Brea			
	Prosopis hybrid 'Phoenix'	30' dia.	24" Box	9
	Thornless Mesquite			

SHRUBS/ACCENTS	COMMON NAME	SIZE
	Agave desmettiana	Smooth Agave
	Aloe hybrid 'Blue Elf'	Blue Elf Aloe
	Dasyliiron wheeleri	Desert Spoon
	Leucophyllum langmaniae 'Rio Bravo'	Rio Bravo Sage
	Muhlenbergia rigida 'Nashville'	Purple Muhly
	Muhlenbergia rigens	Deer Grass
	Russelia equisetiformis	Coral Fountain
	Simmondsia chinensis 'Vista'	Compact Jojoba

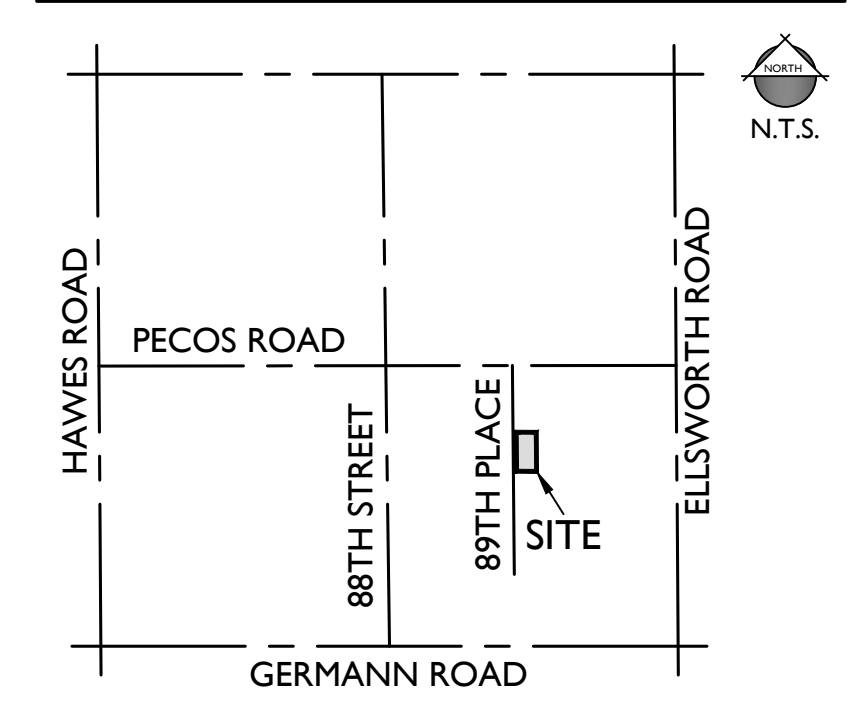
GROUNDCOVERS	COMMON NAME	SIZE
	Convolvulus cneorum	Bush Morning Glory
	Eremophila prostrata 'Outback Sunrise'	Outback Sunrise
	Lantana x 'New Gold'	New Gold Lantana

MATERIALS	SIZE	QTY
	"AZ Brown" Decomposed Granite with Shrub Plantings	17,813 S.F.
	1/2" Screened Granite	2" Depth Min.

KEYNOTES

- ① ENTRY DRIVE
- ② PARKING
- ③ TRUCK PARKING
- ④ SIDEWALK (SEE CIVIL)
- ⑤ TRASH ENCLOSURE (SEE ARCH)
- ⑥ PERIMETER WALL (SEE ARCH)
- ⑦ EXISTING SCREEN WALL

VICINITY MAP



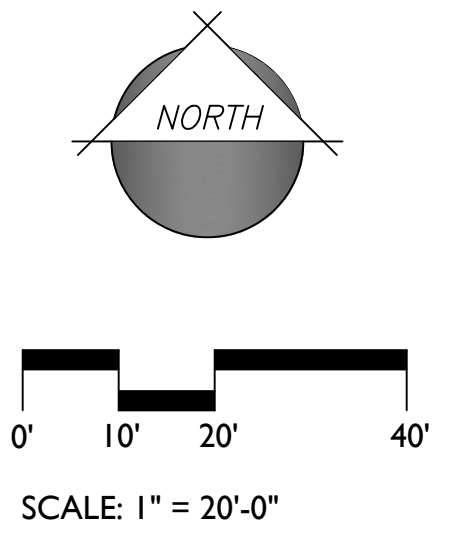
LANDSCAPE DATA

GROSS SITE AREA:	1.86 A.C. (80,909 S.F.)
NET SITE AREA:	1.60 A.C. (69,839 S.F.)
LANDSCAPE AREA:	16,326 S.F.
LANDSCAPE COVERAGE:	23.4%
MATURE TREE CANOPY AREA:	19,249 S.F.
MATURE TREE CANOPY COVERAGE:	27.6%

CITY OF MESA PLANT DATA

89TH PLACE FRONTAGE (319 L.F.)	REQUIRED	PROVIDED
1 TREE PER 25 L.F.	13 TREES	13 TREES
36" BOX (25%)	4 TREES	4 TREES
24" BOX (50%)	7 TREES	9 TREES
4 SHRUBS PER 25 L.F.	52 SHRUBS	52 SHRUBS
PROPERTY PERIMETER (748 L.F.)	REQUIRED	PROVIDED
3 TREES PER 100 L.F. OF ADJACENT PROPERTY LINE	23 TREES	23 TREES
24" BOX (50%)	12	23
15 GAL (50%)	11	0
20 SHRUBS PER 100 L.F. OF ADJACENT PROPERTY LINE	150 SHRUBS	150 SHRUBS
PARKING (19 ISLANDS)	REQUIRED	PROVIDED
1 TREE PER ISLAND	19 TREES	19 TREES
36" BOX (10%)	2	2
24" BOX (90%)	17	17
3 SHRUBS PER ISLAND	57 SHRUBS	57 SHRUBS
FOUNDATION PLANTING (374 L.F.)	REQUIRED	PROVIDED
1 TREE PER 50 L.F. OF EXTERIOR BUILDING WALL	8 TREES	8 TREES*
36" BOX (10%)	1	1
24" BOX (90%)	7	7
GROUND COVERAGE (17,813 S.F. LS AREA)	REQUIRED	PROVIDED
50% OF LANDSCAPE AREA	8,907 S.F.	10,460 S.F.

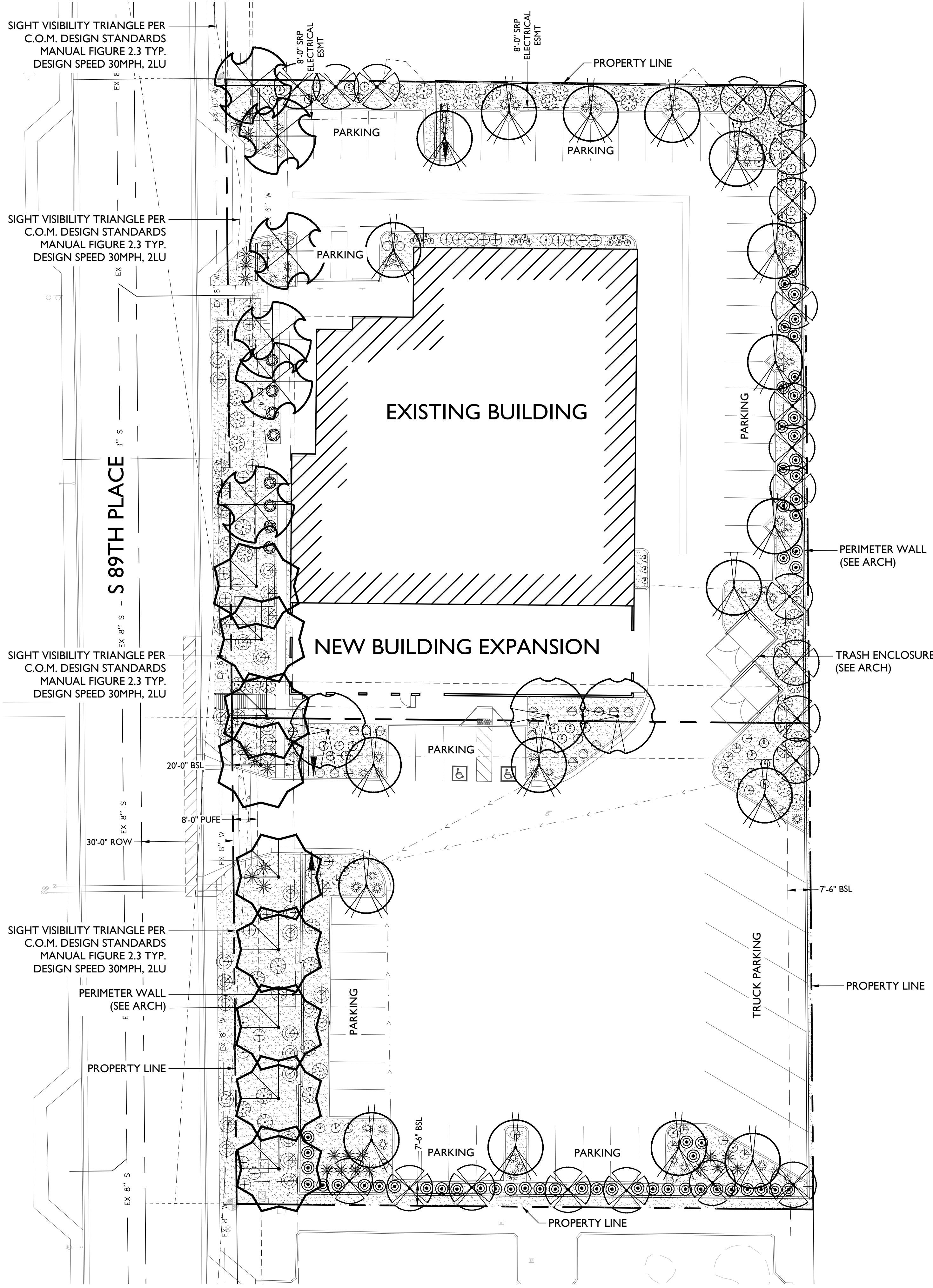
*INCLUDES 5 TREES FROM FRONTAGE AND PARKING LOT PLANTINGS THAT ARE WITHIN 30' OF BUILDING



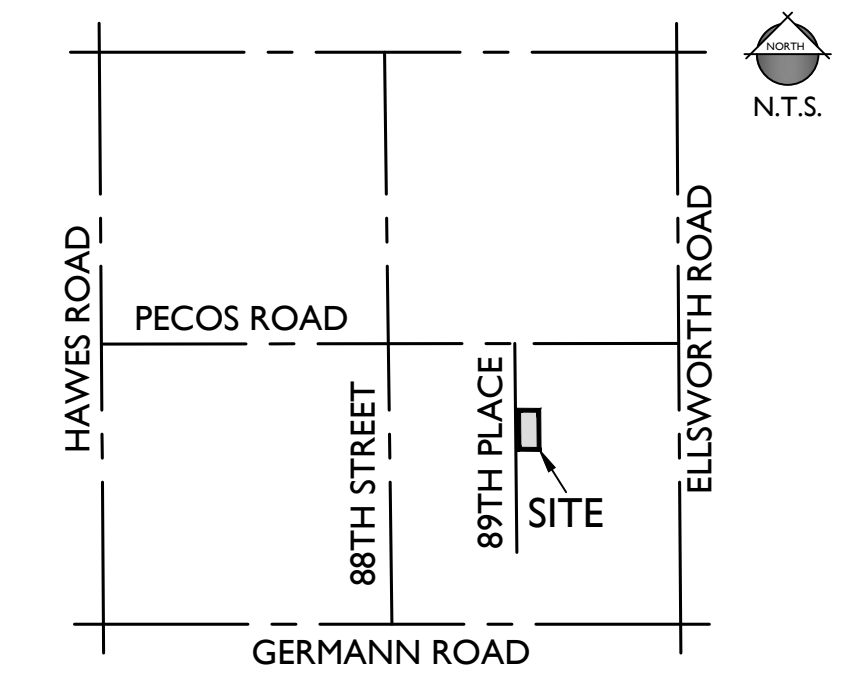
Mar 19, 2026 2:55pm S:\Projects\2025\25-0554 - Kaltech\Landscape\Drawings\Preliminary Plans\25-0554 - L-2.01 - Landscape Planting Plan.dwg

tthomas

25-0554



VICINITY MAP



PLANT LEGEND

SYMBOL	SCIENTIFIC NAME	COMMON NAME	MATURE CANOPY	SIZE	QTY
TREES					
⊗	<i>Acacia aneura</i>	Mulga	15' dia.	24" Box	22
⊗	<i>Caesalpinia cacalaco</i>	Cascalote 'Smoothie'	18' dia.	24" Box	18
⊗	<i>Chitalpa tashkentensis</i>	Chitalpa	25' dia.	36" Box	6
⊗	<i>Parkinsonia praecox</i>	Palo Brea	25' dia.	24" Box	3
⊗	<i>Prosopis hybrid 'Phoenix'</i>	Thornless Mesquite	30' dia.	24" Box	9
SHRUBS/ACCENTS					
⊙	<i>Agave desmettiana</i>	Smooth Agave	5 Gal	52	
⊙	<i>Aloe hybrid 'Blue Elf'</i>	Blue Elf Aloe	5 Gal	18	
⊙	<i>Dasyliion wheeleri</i>	Desert Spoon	5 Gal	24	
⊙	<i>Leucophyllum langmaniae 'Rio Bravo'</i>	Rio Bravo Sage	5 Gal	58	
⊙	<i>Muhlenbergia rigida 'Nashville'</i>	Purple Muhly	5 Gal	60	
⊙	<i>Muhlenbergia rigens</i>	Deer Grass	5 Gal	8	
⊙	<i>Russelia equisetiformis</i>	Coral Fountain	5 Gal	56	
⊙	<i>Simmondsia chinensis 'Vista'</i>	Compact Jojoba	5 Gal	27	
GROUNDCOVERS					
⊕	<i>Convolvulus cneorum</i>	Bush Morning Glory	1 Gal	25	
⊕	<i>Eremophila prostrata 'Outback Sunrise'</i>	Outback Sunrise	1 Gal	39	
⊕	<i>Lantana x 'New Gold'</i>	New Gold Lantana	1 Gal	28	
MATERIALS					
⊞	"AZ Brown" Decomposed Granite or Approved Equal	1/2" Screened 2" Depth Min.		17,813 S.F.	

