

NORTH ELEVATION COLOR/MATERIAL STUDY

DESCRIPTION	COLOR NAME:	TOTAL COVERAGE:
8 X 8 X 16 SMOOTH FACE MASONRY BLOCK, PAINTED	'PORPOISE' DE6373	73%
8 X 8 X 16 SPLIT FACE MASONRY BLOCK, PAINTED	'LOOKING GLASS' DE6376	27%
METAL PANELING = 12" STEEL CHANNEL, PAINTED	BERRIDGE 'BRISTOL BLUE'	0%
STOREFRONT GLAZING	-	0%

SOUTH ELEVATION COLOR/MATERIAL STUDY

DESCRIPTION	COLOR NAME:	TOTAL COVERAGE:
8 X 8 X 16 SMOOTH FACE MASONRY BLOCK, PAINTED	'PORPOISE' DE6373	47%
8 X 8 X 16 SPLIT FACE MASONRY BLOCK, PAINTED	'LOOKING GLASS' DE6376	37%
METAL PANELING = 12" STEEL CHANNEL, PAINTED	BERRIDGE 'BRISTOL BLUE'	7%
STOREFRONT GLAZING	-	9%

EAST ELEVATION COLOR/MATERIAL STUDY

DESCRIPTION	COLOR NAME:	TOTAL COVERAGE:
8 X 8 X 16 SMOOTH FACE MASONRY BLOCK, PAINTED	'PORPOISE' DE6373	65%
8 X 8 X 16 SPLIT FACE MASONRY BLOCK, PAINTED	'LOOKING GLASS' DE6376	22%
METAL PANELING = 12" STEEL CHANNEL, PAINTED	BERRIDGE 'BRISTOL BLUE'	6%
STOREFRONT GLAZING	-	7%

WEST ELEVATION COLOR/MATERIAL STUDY

DESCRIPTION	COLOR NAME:	TOTAL COVERAGE:
8 X 8 X 16 SMOOTH FACE MASONRY BLOCK, PAINTED	'PORPOISE' DE6373	65%
8 X 8 X 16 SPLIT FACE MASONRY BLOCK, PAINTED	'LOOKING GLASS' DE6376	22%
METAL PANELING = 12" STEEL CHANNEL, PAINTED	BERRIDGE 'BRISTOL BLUE'	6%
STORFRONT GLAZING	-	7%

GENERAL NOTES

- ALL SIGNAGE UNDER SEPARATE PERMIT.
- SEE STRUCTURAL FOR LINTEL INFORMATION.
- SEE DOOR SCHEDULE FOR DOOR HEIGHTS.
- SEE STRUCTURAL FOR CONTROL JOINTS.

MATERIAL SAMPLE APPROVAL

- PRIOR TO ORDERING, G.C. TO PROVIDE INDIVIDUAL SAMPLES OF ALL BUILDING COLORS AND MATERIALS FOR REVIEW AND APPROVAL BY THE ARCHITECT AND OWNER. (ie. PAINTED CMU, ETC.)
- ALL INDIVIDUAL SAMPLES TO BE PRESENTED AT ONE TIME, ONSITE IN SIZES OF NO LESS THAN 12" X 12".

MATERIAL KEY

MATERIAL	DESCRIPTION
RG1	8 X 8 X 16 SMOOTH FACE MASONRY BLOCK, PAINTED
SF1	8 X 8 X 16 SPLIT FACE MASONRY BLOCK, PAINTED
CF	CANOPY FRAME = 12" STEEL CHANNEL, PAINTED
CP	CANOPY DECK = METAL SLATS, PAINTED
MP	METAL PANELING = 12" STEEL CHANNEL, PAINTED
MC	METAL COPING, PAINTED

COLOR KEY

KEY	MANUF. - DUNN EDWARDS COLOR NAME:
1	'PORPOISE' DE6373
2	'LOOKING GLASS' DE6376
3	'COLD MORNING' DE6365
4	-

KEY	MATERIAL	NOTE
3	BOLLARDS	
1	SES	POWDER COAT TO MATCH ADJACENT WALL, BY VENDOR
-	TRANSFORMER	POWDER COAT TO MATCH ADJACENT WALL, BY VENDOR

- SEALANTS FOR PROJECTS TO MATCH ADJACENT MATERIAL COLORS - NO WHITE OR OFF WHITE COLORS.
- PAINTER TO PROVIDE TWO COATS SEALER TO ALL EXPOSED NATURAL BLOCK, PRECAST CONCRETE, UNPAINTED CONCRETE AND OTHER MATERIALS AS REQUIRED TO PROVIDE A WEATHER SEALED PROJECT. G.C. IS RESPONSIBLE FOR SUBMITTING ALL PRE-MANUFACTURED MATERIALS AND COLORS TO ARCHITECT FOR REVIEW AND APPROVAL. G.C. TO OBTAIN APPROVAL FROM UTILITY COMPANY BEFORE PAINTING TRANSFORMER.
-
-

STOREFRONT/GLAZING KEY

MATERIAL	COLOR
FRAMES [F1]	'CLEAR ANODIZED ALUMINUM
GLAZING [GL]	GLAZING 1" INSULATED GRAY REFLECTIVE

INSULATED GLAZING SYSTEM SPECIFICATION:

VITRO ARCHITECTURA GLASS OR EQUAL - 1" INSULATED GLAZING SYSTEM

U-FACTOR: 0.29
SOLAR HEAT GAIN COEFFICIENT (SHGC) : 0.17

OUTBOARD: 1/4" PPG SOLARCOOL GRAY (SRF #2)

AIRSPACE: 1/2" (AIR FILLED)

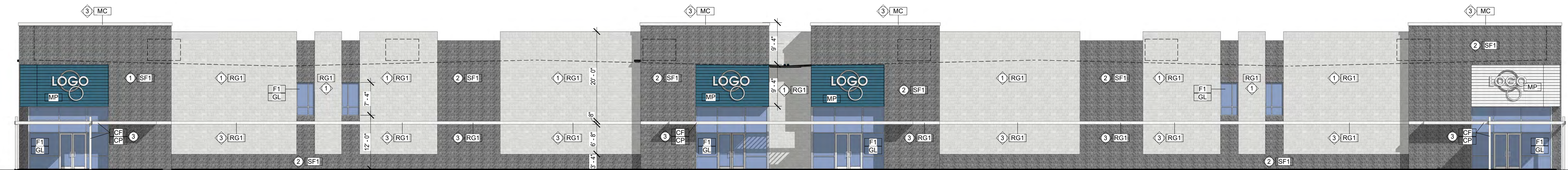
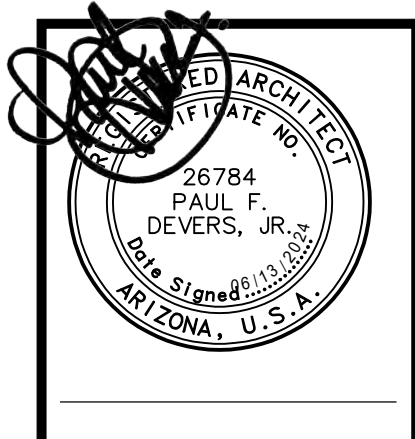
INBOARD: 1/4" PPG SOLARBAN 60 ON CLEAR (SRF #3)

- 'S' AT WINDOW LOCATIONS INDICATES SPANDREL PANELS.
- SEE WINDOW TYPES FOR LOCATIONS OF TEMPERED GLASS.

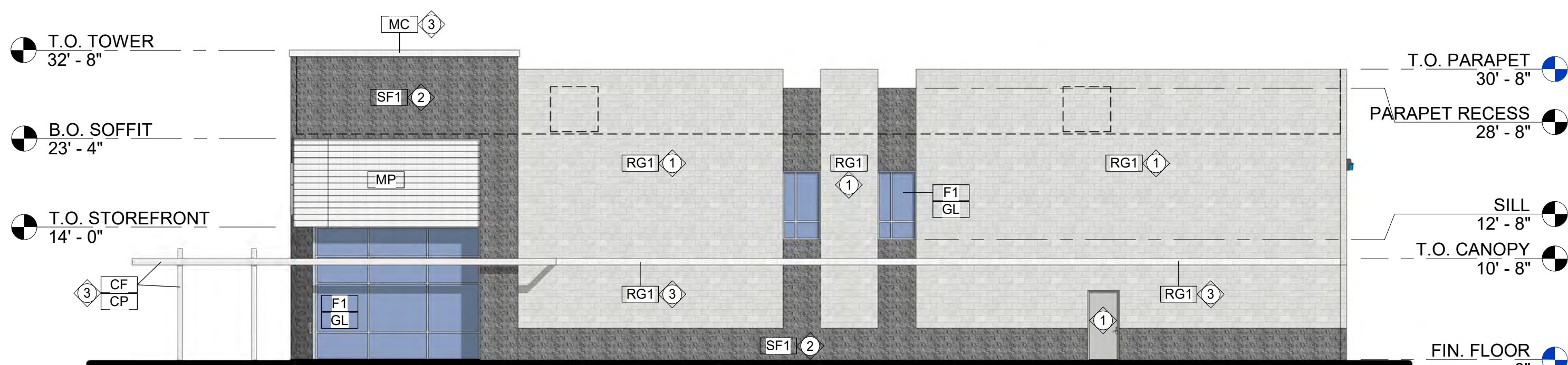


730 N. 52nd St. Ste. 203
Phoenix, Arizona 85008
P 602.393.5060

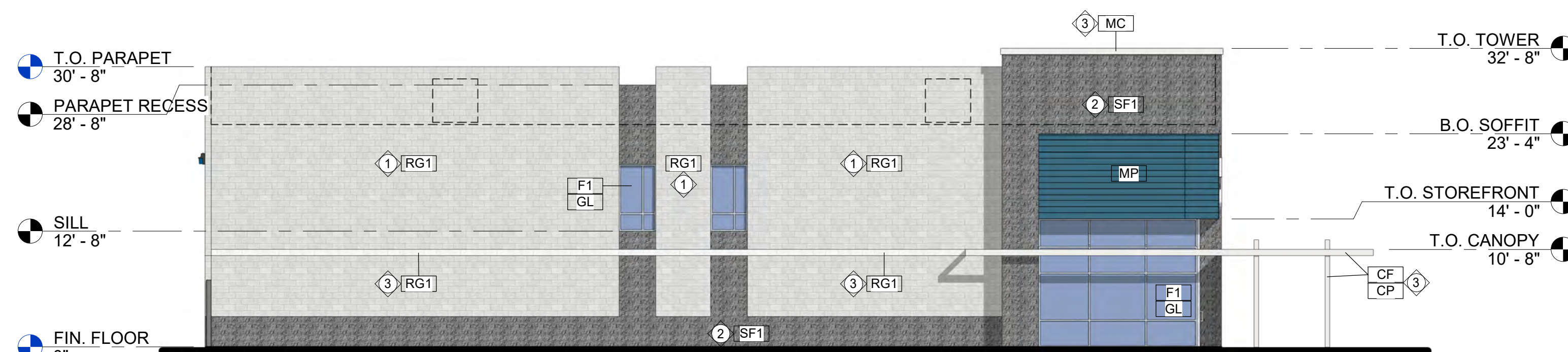
CawleyArchitects.com



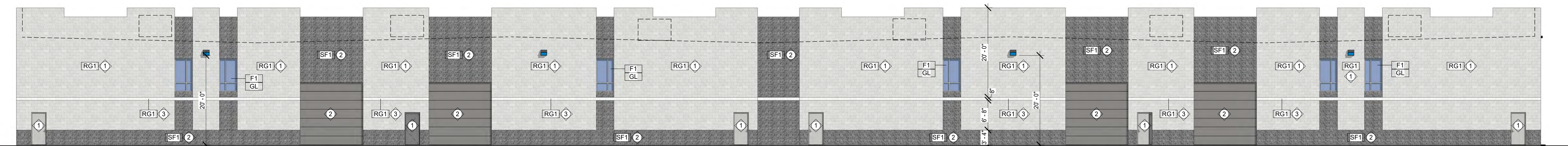
SOUTH ELEVATION



EAST ELEVATION



WEST ELEVATION



NORTH ELEVATION

EXTERIOR ELEVATIONS

3/32" = 1'-0"

0' | 4' | 8' | 16'

CLYDE
CAPITAL
WINNSTON
AVE.

NE CORNER OF
SATWOOD & E.
WINNSTON AVE.
MESA
ARIZONA
85212

DATE
DESIGN REVIEW
06-13-2024

DRAWN BY: BC

OWNERSHIP OF DOCUMENTS:
This drawing, including the architectural concept, design, and data, is an instrument of service and shall remain the property of Cawley Architects Inc. The drawing is for use at the location described herein and shall not be used in other locations. Any other use or release of these drawings may result in civil damages.

DISCREPANCIES AND CONFLICTS:
All discrepancies found in these documents or conflicts between these documents and field conditions shall be reported to Cawley Architects Inc for resolution before the commencement of the work.

EXTERIOR ELEVATIONS
COLOR

Project: 23083

A7.1C