

EXHIBIT B LEGAL DESCRIPTION PUFE ABANDONMENT

A PORTION OF THE PUFE RECORDED IN doc. 2001-0194534, RECORDS OF MARICOPA COUNTY, ARIZONA LOCATED IN THE NORTHWEST QUARTER OF SECTION 36, TOWNSHIP 1 NORTH, RANGE 6 EAST, OF THE GILA AND SALT RIVER MERIDIAN, MARICOPA COUNTY, ARIZONA MORE PARTICULARLY DESCRIBED AS FOLLOWS:

COMMENCING AT THE NORTHWEST CORNER OF SAID SECTION 36, FROM WHICH THE NORTH QUARTER CORNER OF SAID SECTION 36 BEARS NORTH 89°40'07" EAST, A DISTANCE OF 2640.56 FEET;

THENCE ALONG THE NORTH LINE OF SAID SECTION 36, NORTH 89°40'07" EAST, A DISTANCE OF 570.07 FEET;

THENCE LEAVING SAID NORTH LINE, SOUTH 00°19'53" EAST, A DISTANCE OF 661.39 FEET TO THE POINT OF BEGINNING;

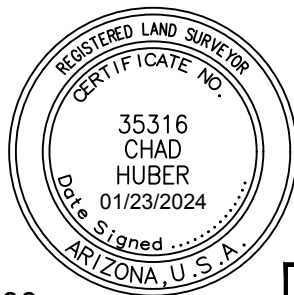
THENCE NORTH 89°46'40" EAST, A DISTANCE OF 20.00 FEET;

THENCE SOUTH 00°19'53" EAST, A DISTANCE OF 153.68 FEET;

THENCE SOUTH 89°40'07" WEST, A DISTANCE OF 20.00 FEET;

THENCE NORTH 00°19'53" WEST, A DISTANCE OF 153.72 FEET TO THE POINT OF BEGINNING.

SAID PARCEL CONTAINING 3,074 SQ.FT. OR 0.071 ACRES MORE OR LESS



CHAD W. HUBER
RLS 35316
7740 N. 16TH STREET, SUITE 300
PHOENIX, ARIZONA 85020
PH. 602-837-5511
chad.huber@kimley-horn.com

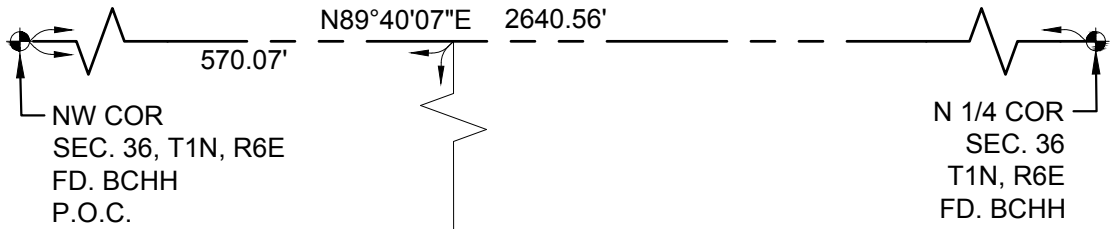
Kimley»Horn

7740 N. 16TH ST, Suite 300
PHOENIX, AZ 85020

Tel. No. (602) 837-5511

Scale	Drawn by	Checked by	Date	Project No.	Sheet No.
N/A	CWH	CWH	01/23/2024	091502440	1 OF 2

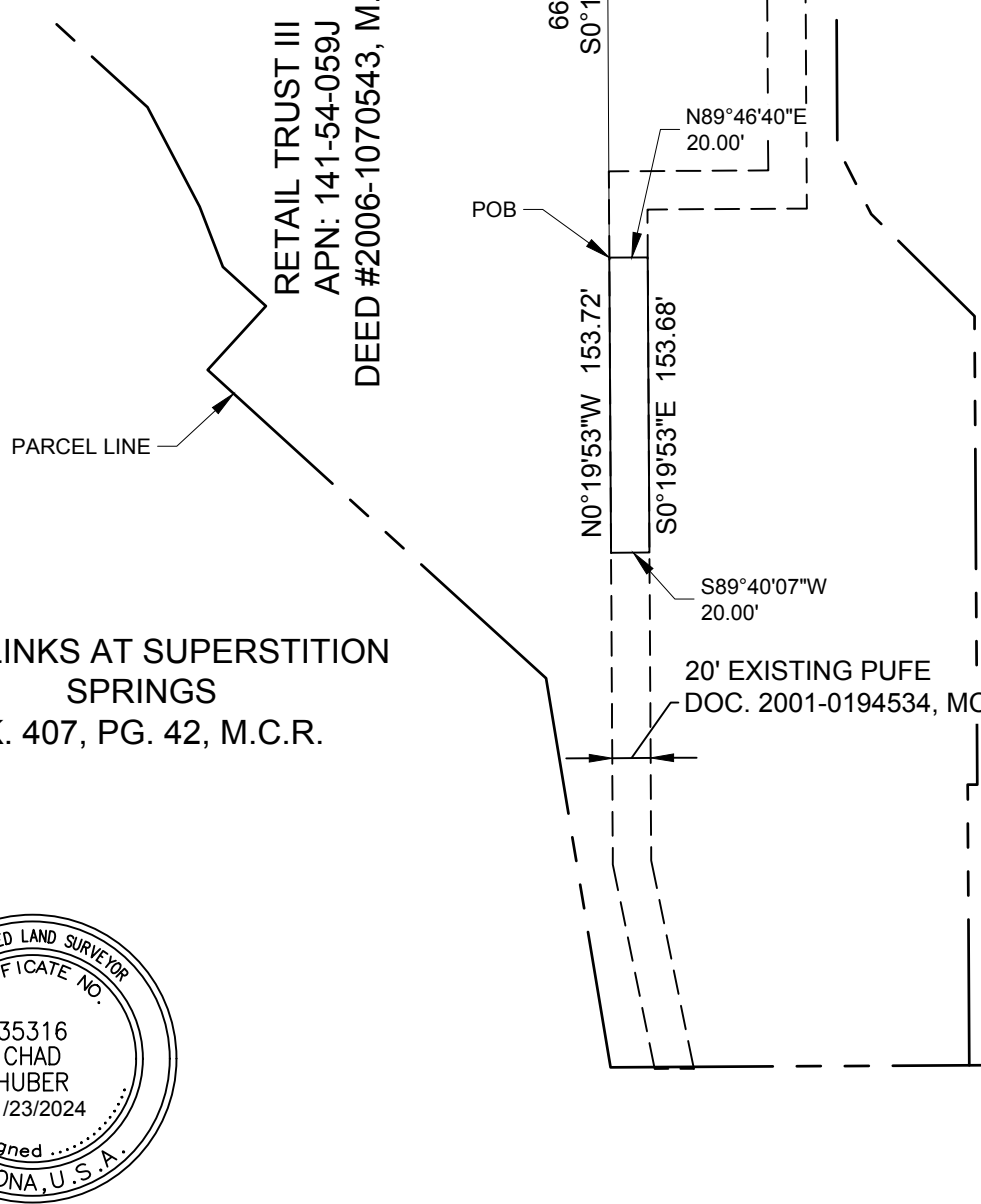
EXHIBIT B



NW COR
SEC. 36, T1N, R6E
FD. BCHH
P.O.C.

N 1/4 COR
SEC. 36
T1N, R6E
FD. BCHH

RETAIL TRUST III
APN: 141-54-059J
DEED #2006-1070543, M.C.R.



PARKLINKS AT SUPERSTITION
SPRINGS
BK. 407, PG. 42, M.C.R.



CHAD W. HUBER
RLS 35316
7740 N. 16TH STREET, SUITE 300
PHOENIX, ARIZONA 85020
PH. 602-837-5511
chad.huber@kimley-horn.com

Kimley»Horn

7740 N. 16TH ST, Suite 300
PHOENIX, AZ 85020

Tel. No. (602) 837-5511

Scale	Drawn by	Checked by	Date	Project No.	Sheet No.
N.T.S.	CWH	CWH	01/23/2024	091502440	2 OF 2