



Sirrine House

Sirrine House Improvements Design Package

11/21/2024

Project Goals



RESPECT THE HISTORY

Beyond mere historical restoration, the City of Mesa has embarked on a creative journey to reimagine the Sirrine House as a dynamic space for the community. This project will be integrated into the overall design with a keen eye on preserving the historic aesthetic of the Sirrine House.

- Incorporate design elements that complement the historic features of the Sirrine House.
- Ensure that all renovations and modern features respect the original architecture and materials.



URBAN FARMING

Urban farming at the Sirrine House is not just about growing food; The Sirrine House will promote sustainable urban agriculture, showcasing farming practices that align with environmental stewardship. This feature will blend seamlessly into the historical landscape, demonstrating how the past can meet the future of sustainable living.

- Establish on-site agricultural production focused on sustainability.
- Implement techniques such as composting, rainwater harvesting, and organic farming.
- Promote the farm-to-table concept by supplying locally grown produce to the community.
- Integrate the farming area into educational and community programs.
- Use the site as a model for urban farming in a historic, urban setting.



EDUCATIONAL HUB

The Sirrine House will be a community hub for education, providing enriching experiences for learners of all ages. School programs, historical tours, urban farming workshops, cut flowers, and cooking classes will all find a home within this historical site.

- Create educational programs centered on the history of the Sirrine House and urban farming.
- Offer workshops on topics like sustainable agriculture, cooking with locally grown produce, and floriculture.
- Provide interactive learning experiences for all age groups, from children to adults.

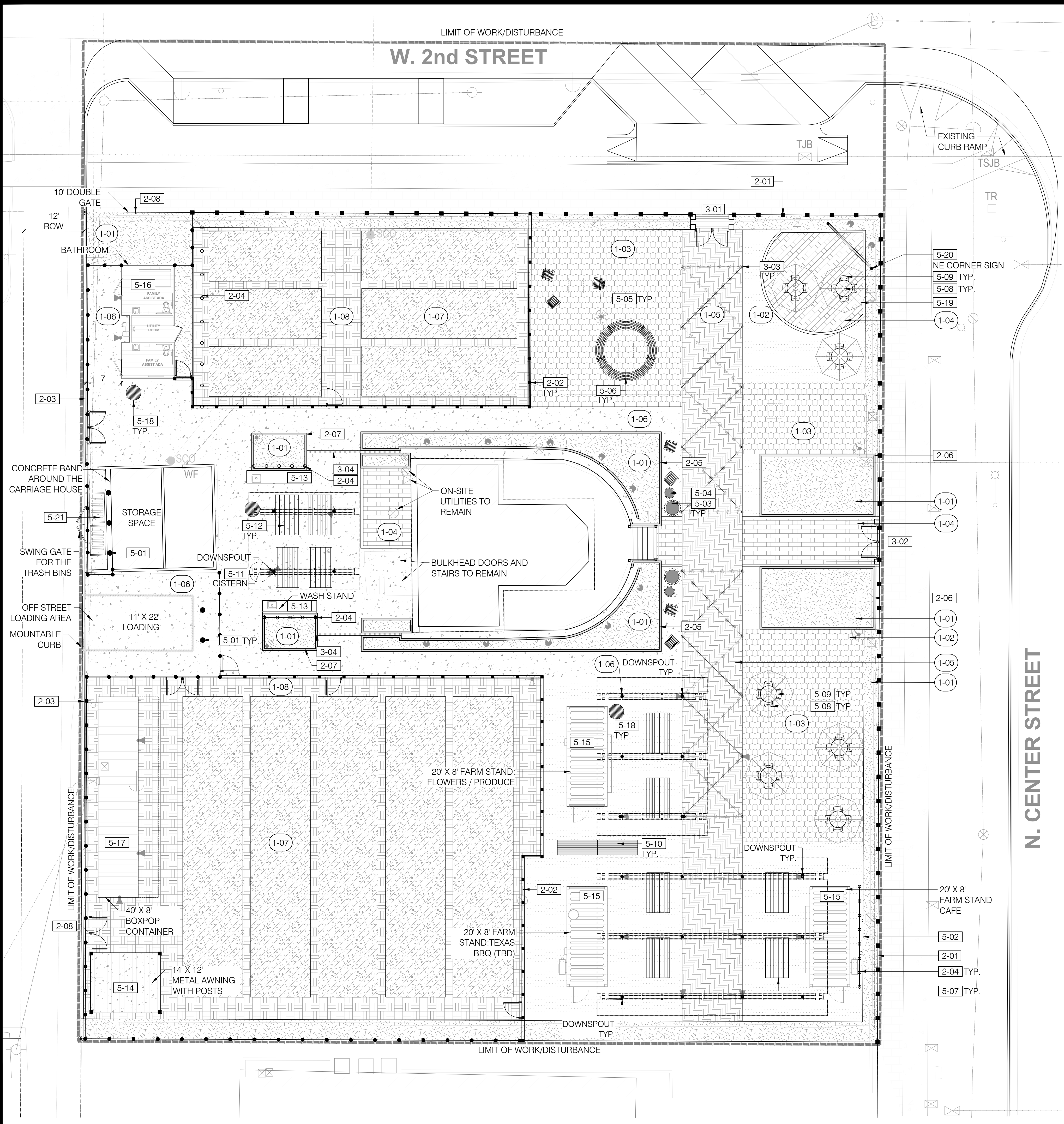


PUBLIC EVENTS

The Sirrine House will serve as a versatile venue for community events such as farm-to-table food service, local farm produce selling, weekly food trucks, etc. From cultural gatherings to educational workshops, this space will foster a sense of togetherness, making it a cornerstone of community life in Mesa.

- Host farm-to-table dinners, seasonal markets, and weekend food truck events.
- Organize community-based workshops, and cultural events.
- Provide a flexible space for small gatherings.
- Incorporate retail that promotes local culture, sustainability, and education.

DATE: 5/21/25



REFERENCE NOTES SCHEDULE		
SYMBOL	CODE	DESCRIPTION
1 - PAVING & SURFACING		
	1-01	DECOMPOSED GRANITE
	1-02	STABILIZED DECOMPOSED GRANITE
	1-03	REINFORCED DECOMPOSED GRANITE ON GRAVEL PAVE
	1-04	BRICK PAVER - SALVAGE
	1-05	CONCRETE PAVEMENT TYPE 1
	1-06	CONCRETE PAVEMENT TYPE 2
	1-07	PLANTING BED (BY OTHERS)
	1-08	FARM LAND SOIL (BY OTHERS)
2 - WALLS & FENCES		
	2-01	EXISTING FENCE TO REMAIN
	2-02	TRELLIS FENCE
	2-03	IRON TALL FENCE FOR SECURITY
	2-04	FREE STANDING GREEN SCREEN
	2-06	PLANTER AROUND THE BUILDING
	2-07	PLANTER AT ENTRY
	2-08	RAIN GARDEN PLANTER
	2-09	IRON DOUBLE SWING GATE
3 - METALS		
	3-01	TRELLIS ARBOR & GATE AT NORTH
	3-02	ENTRY GATE AT EAST
	3-03	STRING LIGHTS POST
	3-04	TRENCH GRATE
5 - FURNISHINGS		
	5-01	BOLLARDS
	5-02	SIGN TO REMAIN
	5-03	POT ARRIS - TALL
	5-04	POT ARRIS - SMALL
	5-05	ADIRONDACK CHAIRS
	5-06	CIRCULAR TREE BENCH
	5-07	PICNIC TABLE
	5-08	OUTDOOR CHAIRS - SLED BASE
	5-09	OUTDOOR TABLE
	5-10	GATHERING COUNTER
	5-11	RAINWATER CISTERN
	5-12	WORK BENCH
	5-13	WASH STATION
	5-14	FREE STANDING AWNING
	5-15	20' CONTAINER FARM STAND
	5-16	PUBLIC RESTROOM
	5-17	40' CONTAINER FOR OPERATION AREA
	5-18	TRASH RECEPTACLE
	5-19	OUTDOOR UMBRELLA
	5-20	NE CORNER SIGN
	5-21	REFUSE WASTE DUMPSTER

LAYOUT LEGEND	
SYMBOL	DESCRIPTION
	FIRE HYDRANT, RE: CIVIL
	EXISTING LIGHT, RE: CIVIL
	PEDESTRIAN LIGHT, RE: CIVIL
	LIMIT OF WORK / DISTURBANCE



SCALE
0 5' 10' 20'
SCALE: 1" = 10'-0"

NORTH

BENCHMARK:
90% Design
ELEVATION= (C.O.M. DATUM)

Revisions:

Dig Studio

3003 N. NORTH CENTRAL AVE.
SUITE 800, PHOENIX, ARIZONA 85012
P 602.595.4101 | DIGSTUDIO.COM

ARIZONA 811

Contact Arizona 811 at least two full working days before you begin excavation.
Call 811 or click Arizona811.com

CITY OF MESA
ENGINEERING DEPARTMENT

SIRRIE HOUSE
160 N CENTER ST, MESA, AZ 85201

LAYOUT & MATERIAL PLAN

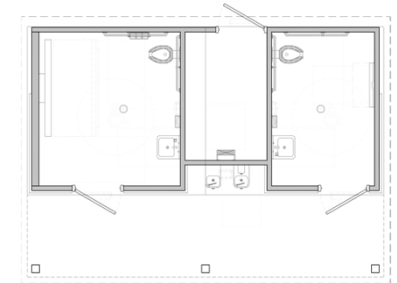
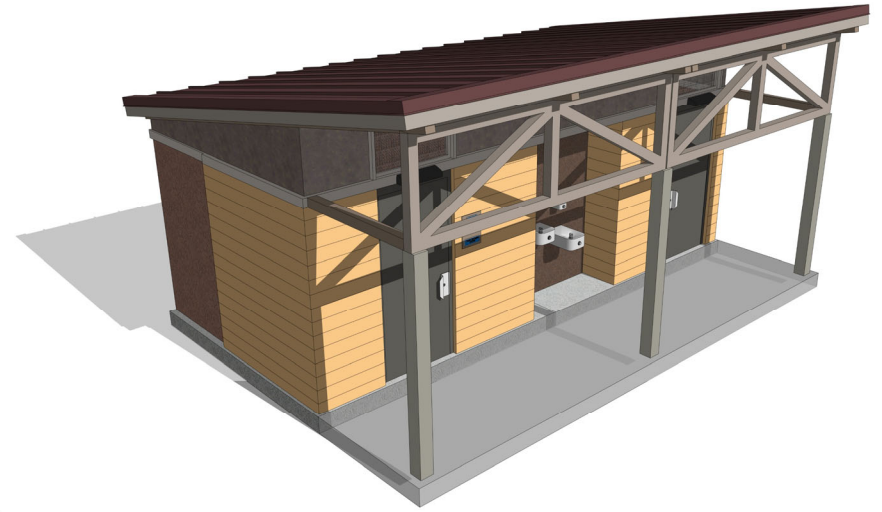
SHEET OF

CATALOG NUMBER:
LS101

DESIGNED BY: YJ. NK
APPROVED BY: CA

ACTIVITY: 05/15/2025
PROJ. NO.: CP1171SIRR

DATE: 5/21/25



FLOOR PLAN

SCALE: NOT TO SCALE

THIS CONCEPTUAL/ PRELIMINARY DESIGN AND THE 3D RENDERING IS AN ARTISTIC INTERPRETATION OF THE DESIGN. IT IS NOT MEANT TO BE AN EXACT RENDITION OF THE FINISH PRODUCT. SOME ITEMS MAY NOT BE STANDARD AND/OR SUBJECT TO CHANGE DURING PROJECT DEVELOPMENT



HOUSE SIRRINE

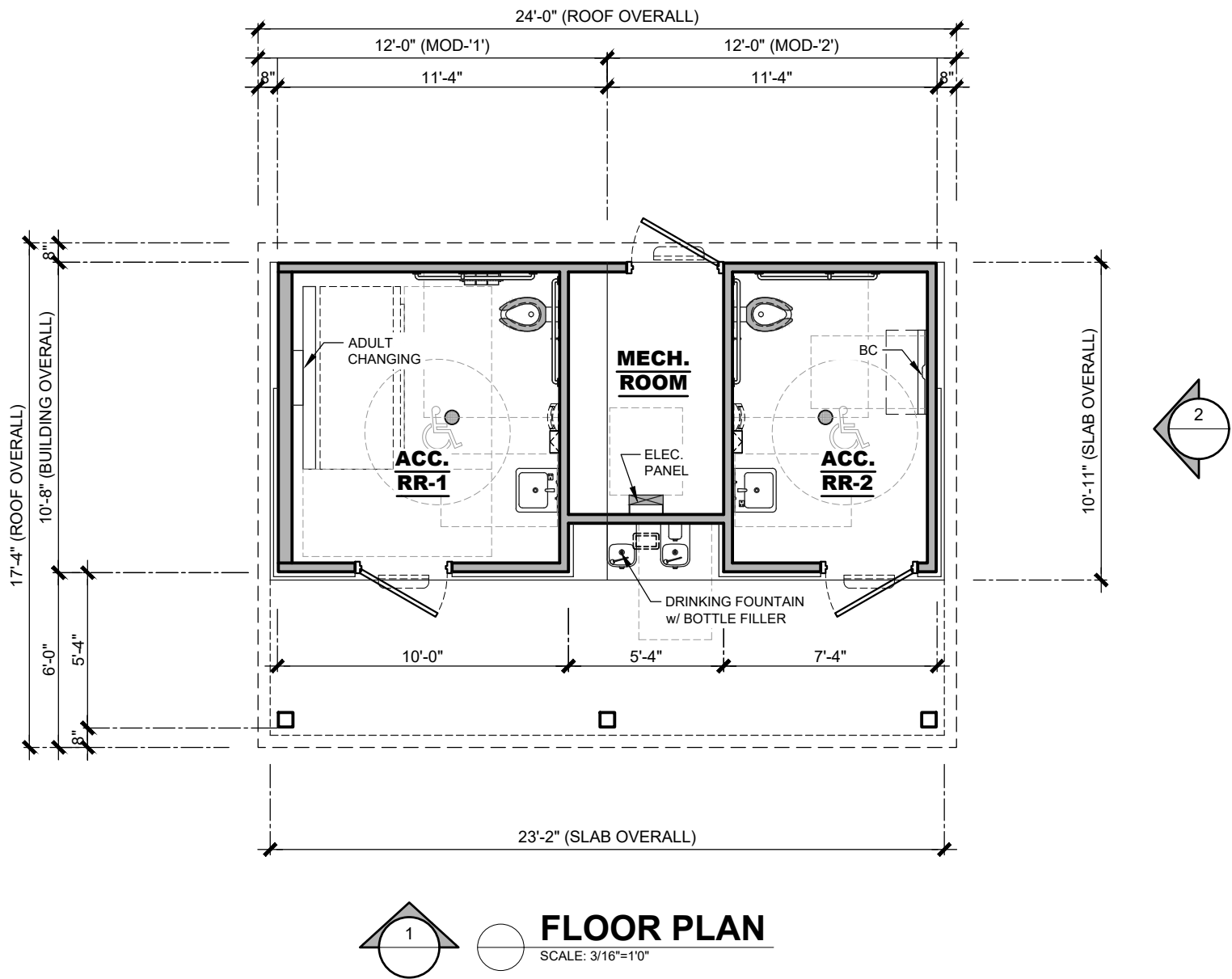
MEZA,
ARIZONA
**RESTROOM
BUILDING**



www.PublicRestroomCompany.com

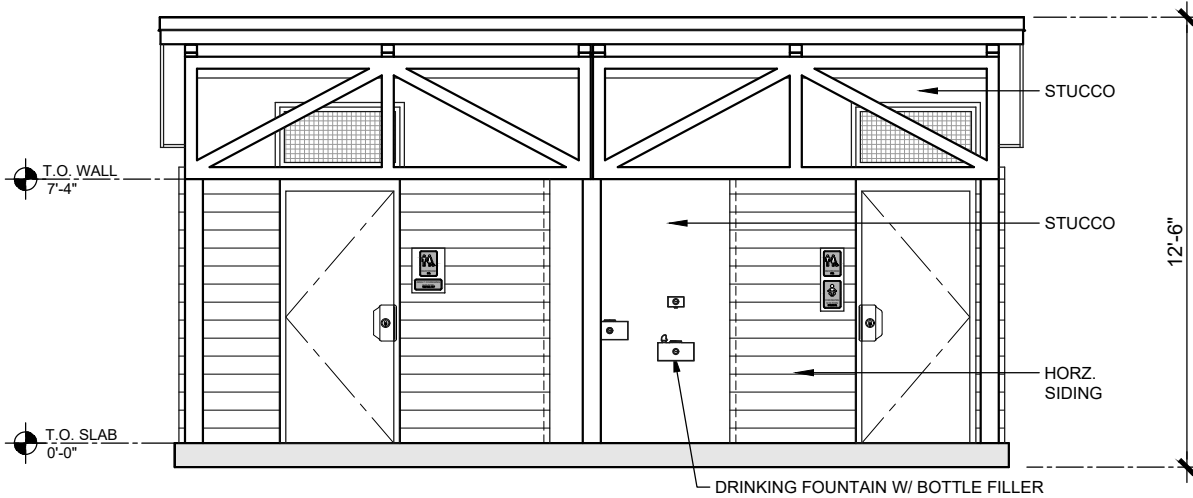
2587 BUSINESS PARKWAY
MINDEN NEVADA 89423
P: 888-888-2060 F: 888-888-1448

COPYRIGHT 2025,
PUBLIC RESTROOM
COMPANY THIS
MATERIAL IS THE
EXCLUSIVE PROPERTY
OF PUBLIC RESTROOM
COMPANY AND SHALL
NOT BE REPRODUCED,
USED OR DISCLOSED
TO OTHERS EXCEPT AS
AUTHORIZED BY THE
WRITTEN PERMISSION
OF PUBLIC RESTROOM
COMPANY.

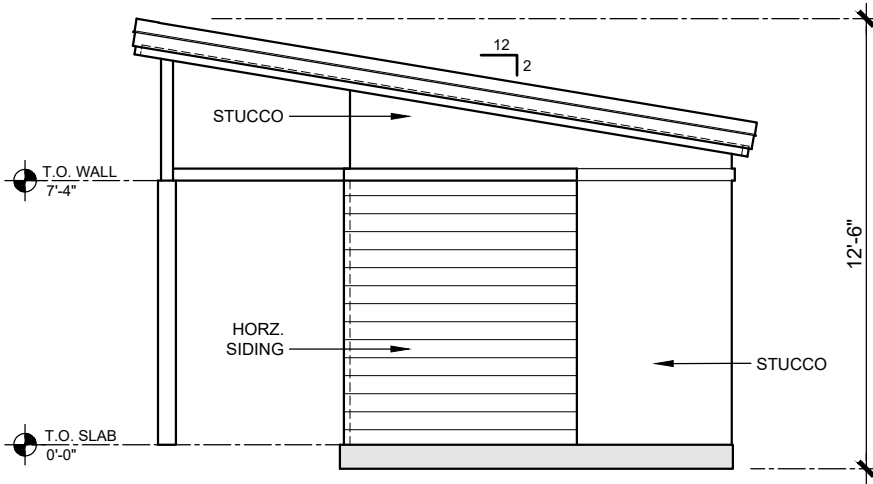


THIS CONCEPTUAL/ PRELIMINARY DESIGN AND THE 3D RENDERING IS AN ARTISTIC INTERPRETATION OF THE DESIGN. IT IS NOT MEANT TO BE AN EXACT RENDITION OF THE FINISH PRODUCT. SOME ITEMS MAY NOT BE STANDARD AND / OR SUBJECT TO CHANGE DURING PROJECT DEVELOPMENT

 <div>PUBLIC RESTROOM COMPANY Building Better Places To Go.™</div>	COPYRIGHT 2025, PUBLIC RESTROOM COMPANY. THIS MATERIAL IS THE EXCLUSIVE PROPERTY OF PUBLIC RESTROOM COMPANY AND SHALL NOT BE REPRODUCED, USED, OR DISCLOSED TO OTHERS EXCEPT AS AUTHORIZED BY THE WRITTEN PERMISSION OF PUBLIC RESTROOM COMPANY.	BUILDING TYPE:	RESTROOM BUILDING	REVISION #	-	REVISION DATE:		SHEET#	A-1
		PROJECT:	SIRRINE HOUSE MESA, AZ	PROJECT #:	13073	DRAWN BY:		MAX. PERSON / HOUR:	90 S
						START DATE:	3/13/2025		
						DRAWN BY:	EOR		



ELEVATION 1
SCALE: 3/16"=1'-0"

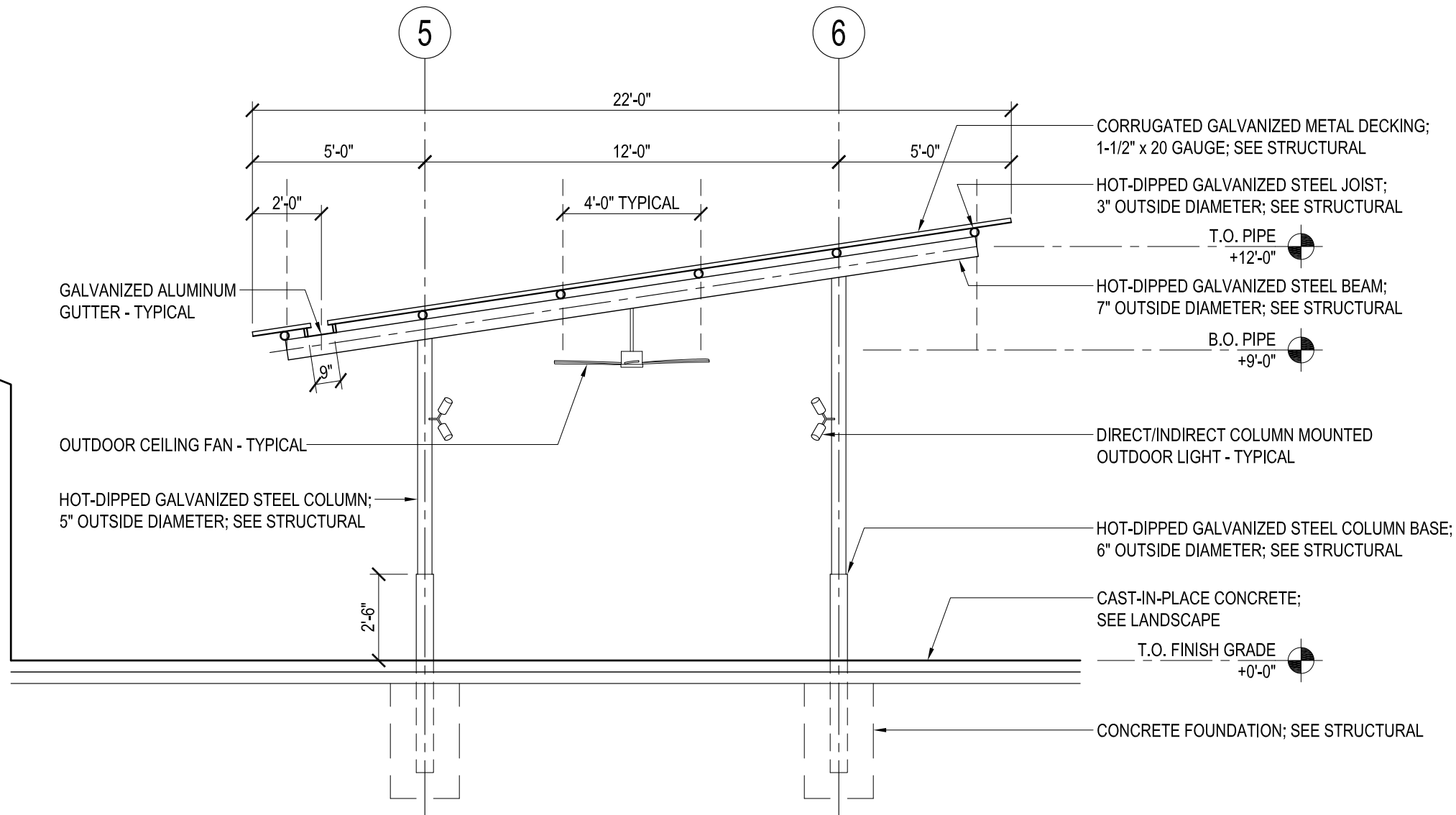


ELEVATION 2
SCALE: 3/16"=1'-0"

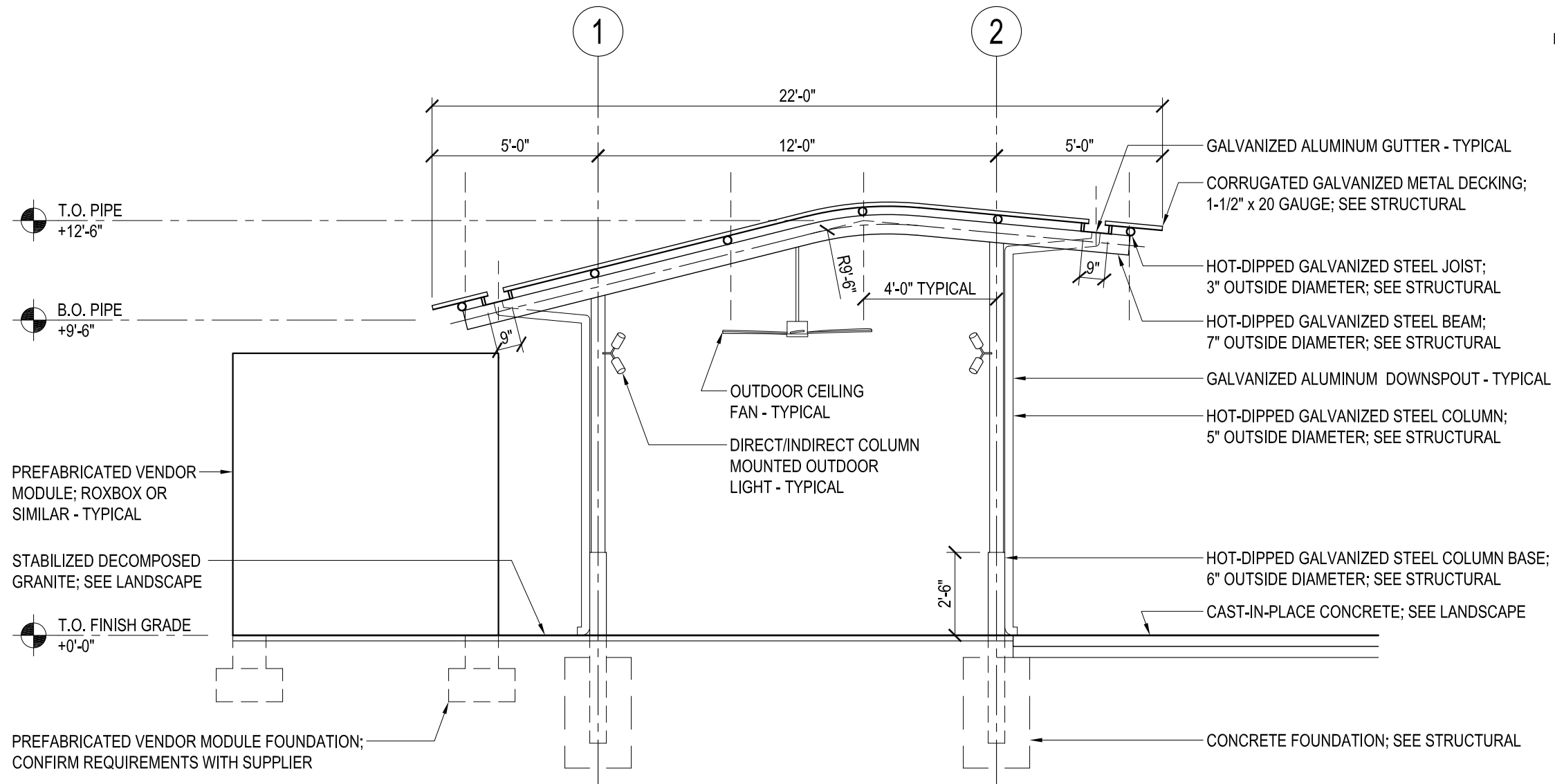
THIS CONCEPTUAL/ PRELIMINARY DESIGN AND THE 3D RENDERING IS AN ARTISTIC INTERPRETATION OF THE DESIGN. IT IS NOT MEANT TO BE AN EXACT RENDITION OF THE FINISH PRODUCT. SOME ITEMS MAY NOT BE STANDARD AND / OR SUBJECT TO CHANGE DURING PROJECT DEVELOPMENT

	COPYRIGHT 2025, PUBLIC RESTROOM COMPANY. THIS MATERIAL IS THE EXCLUSIVE PROPERTY OF PUBLIC RESTROOM COMPANY AND SHALL NOT BE REPRODUCED, USED, OR DISCLOSED TO OTHERS EXCEPT AS AUTHORIZED BY THE WRITTEN PERMISSION OF PUBLIC RESTROOM COMPANY.	BUILDING TYPE: RESTROOM BUILDING PROJECT: SIRRINE HOUSE MESA, AZ	REVISION # -	REVISION DATE:	SHEET# A-1 MAX. PERSON / HOUR: 90 S
			PROJECT #: 13073	DRAWN BY:	
				START DATE: 3/13/2025 DRAWN BY: EOR	

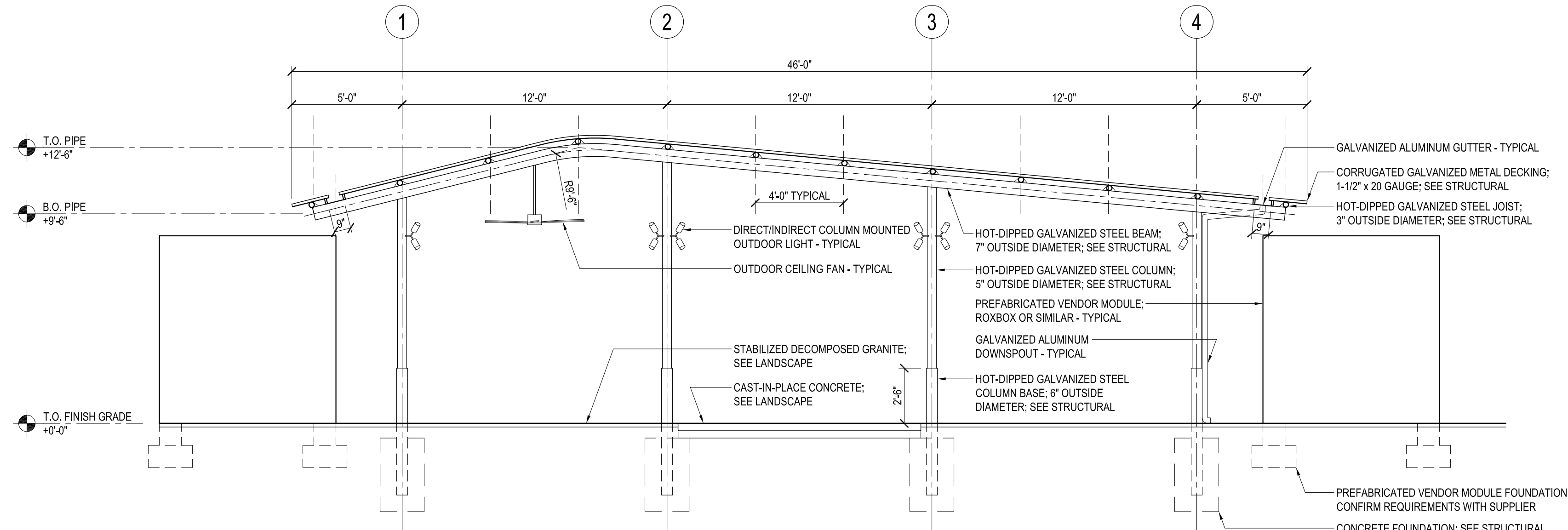
DATE: 4/27/25 C:\USERS\BRADLAN\LAST ARCHITECTS\PROJECTS\23-020 SIRRINE HOUSE\DESIGN\25-0422 STRUCTURAL\UPDATES\SIRRINE HOUSE-90_CANOPY DRAWINGS.DWG



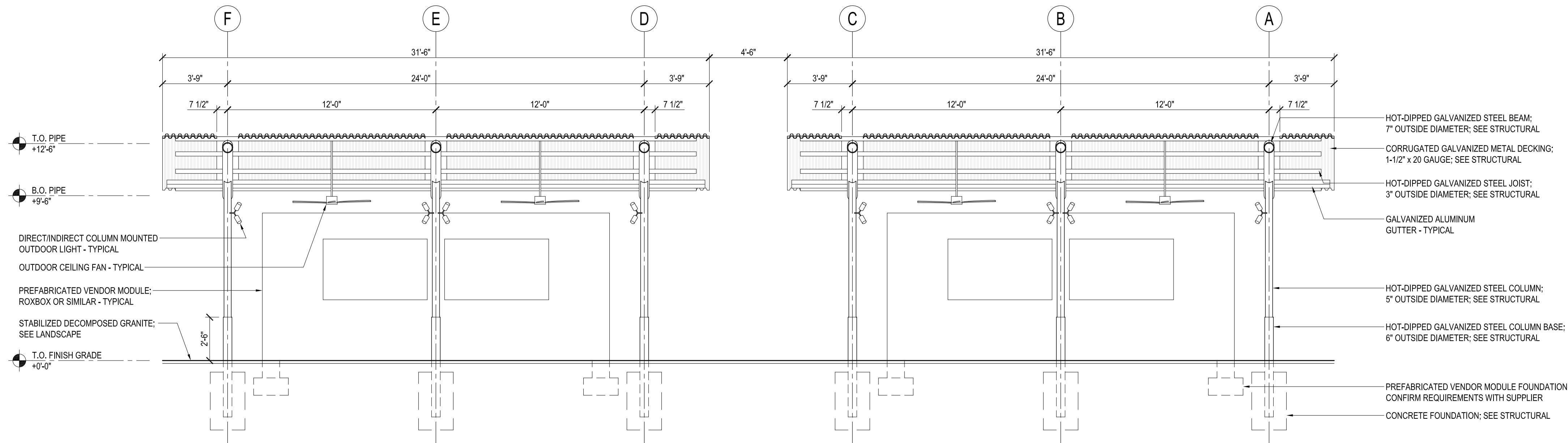
4 CARRIAGE HOUSE CANOPY SECTION
1/4" = 1'-0"



3 VENDOR CANOPY NORTH TRANSVERSE SECTION
1/4" = 1'-0"



2 VENDOR CANOPY SOUTH TRANSVERSE SECTION
1/4" = 1'-0"



1 VENDOR CANOPY LONGITUDINAL SECTION
1/4" = 1'-0"



SCALE		
	BENCHMARK:	
	90% Design	
	ELEVATION =	(C.O.M. DATUM)
	North	

3003 N. NORTH CENTRAL AVE.
SUITE 800, PHOENIX, ARIZONA 85012
P. 602.595.4101 | DIGSTUDIO.COM

Contact Arizona 811 at least two full working days before you begin excavation.
Call 811 or click Arizona811.com

	CITY OF MESA ENGINEERING DEPARTMENT	
	SIRRINE HOUSE 160 N CENTER ST, MESA, AZ 85201	
	CANOPY SECTIONS	DRAWING A4
DRAWN BY: LAST Architects ENGINEER: APPROVED BY:	SHEET 4 OF 4	CATALOG NUMBER:
ACTIVITY: 05/01/2025 PROJ. NO.: CP1171SRR		

LAST ARCHITECTS
515 E GRANT STREET, SUITE 109
PHOENIX, AZ 85004

Signage Alternative



Branding & Identity:
The signage will enhance the visibility of the Sirrine House from Center Street while also serving as a branding element that highlights its role as an educational hub.



Framing the View:
The signage will create a visually compelling frame for the Sirrine House, offering an ideal backdrop for photos and enhancing visitor engagement through social media moments.

Signage Alternative



Signage Alternative



Signage Alternative



Signage Alternative

