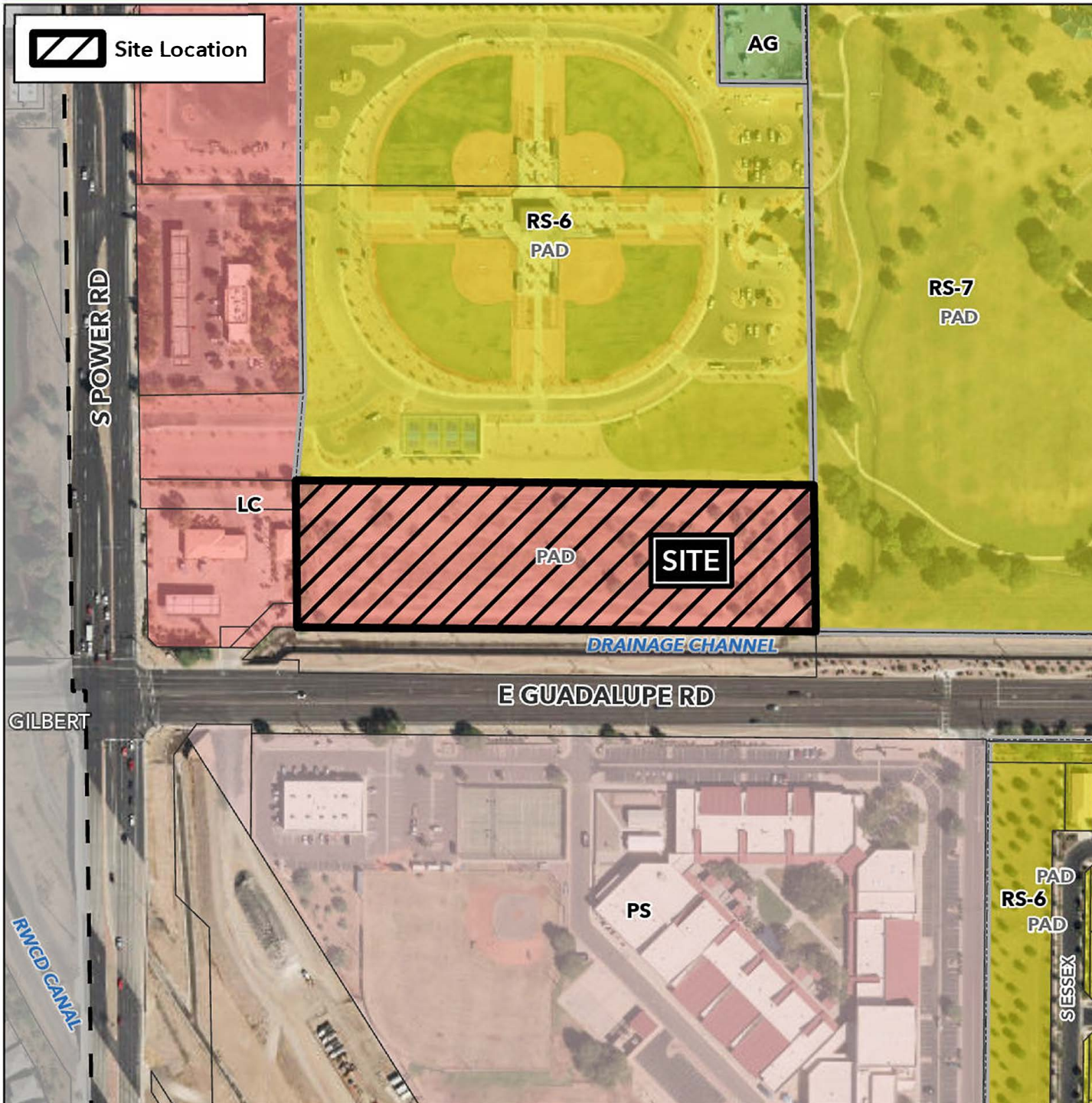


Planning and Zoning Vicinity Map: ZON24-00708

Case Details

 Site Location



Case:

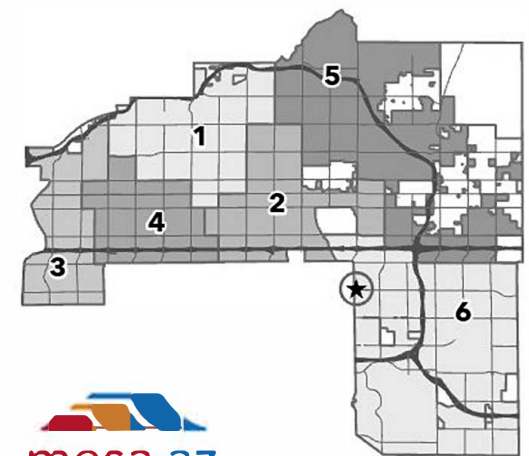
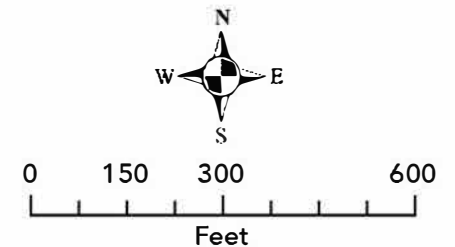
ZON24-00708

Site / Address:

(District 6). 5± acres located approximately 275 feet east of the northeast corner of South Power Road and East Guadalupe Road.

Request:

Rezone from Limited Commercial with Planned Area Development Overlay (LC-PAD) to Limited Commercial with a new Planned Area Development Overlay (LC-PAD), Council Use Permit, and Site Plan Review for a 120-unit multiple residence development.



 mesa·az