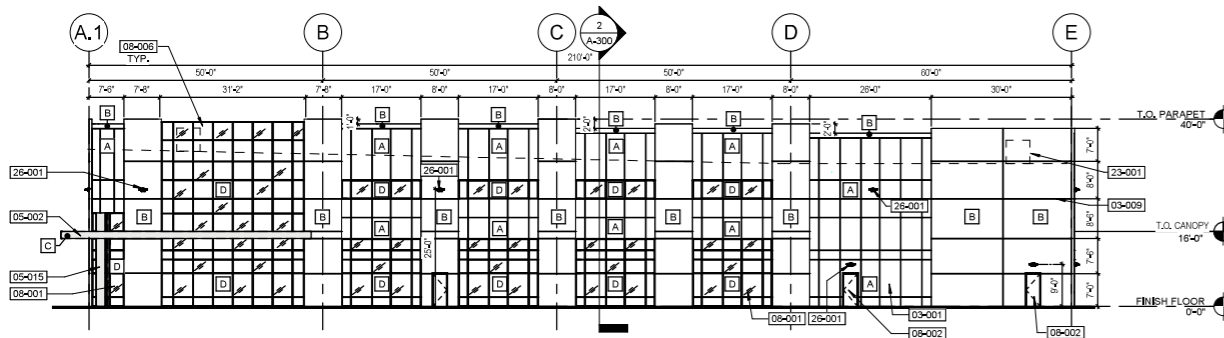
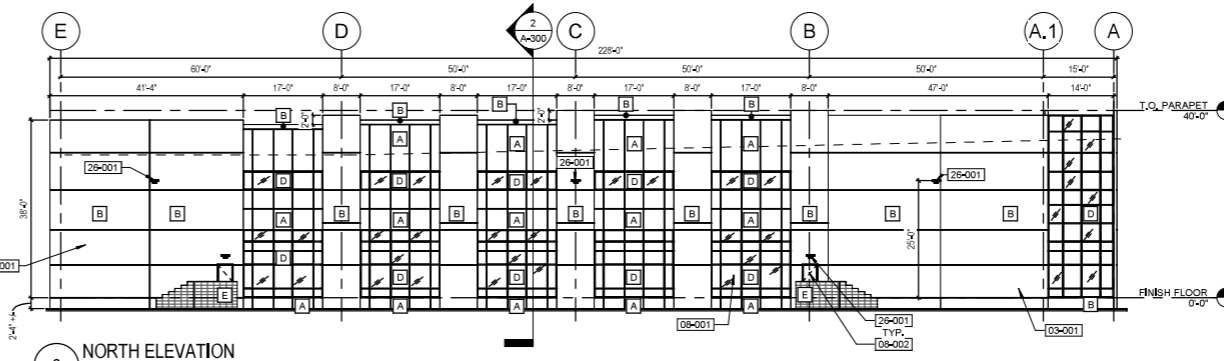


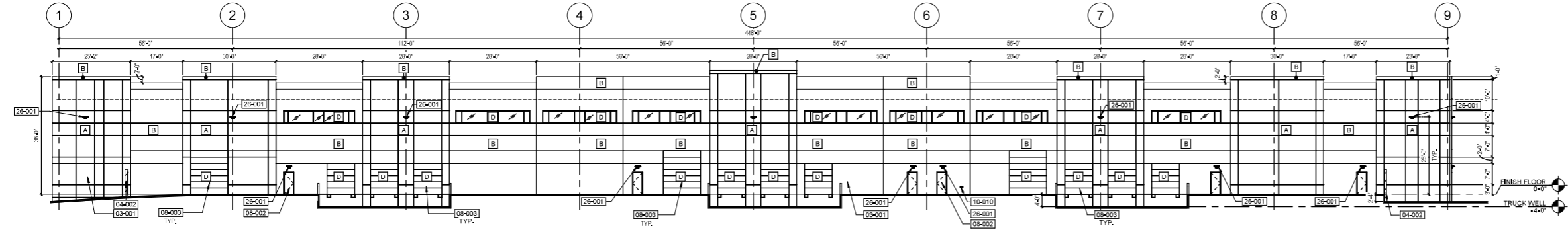
1 WEST ELEVATION
SCALE 1/16" = 1'-0"



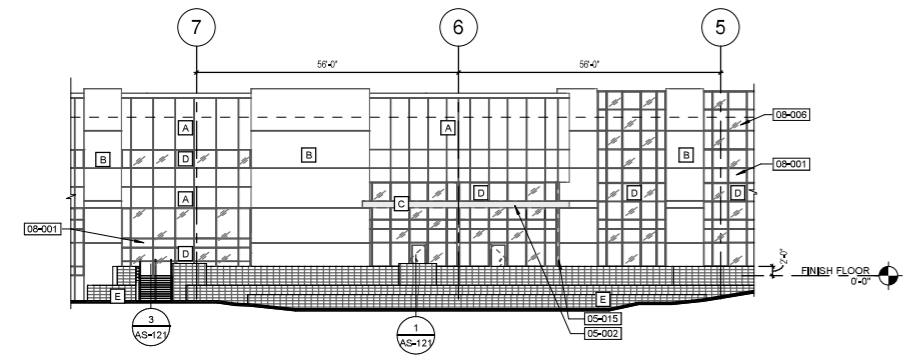
2 SOUTH ELEVATION
SCALE 1/16" = 1'-0"



3 NORTH ELEVATION
SCALE 1/16" = 1'-0"



4 EAST ELEVATION
SCALE 1/16" = 1'-0"



5 WEST PLANTER ELEVATION
SCALE 1/16" = 1'-0"

EXTERIOR MATERIAL LEGEND

COLOR PALETTE "A" PER LONGBOW DESIGN GUIDELINES

- A** SW7015 - GAUNTLET GRAY, LRV17
- B** SW9167 - POLISHED CONCRETE, LRV32
- C** ACCENT COLOR DEHW10 - ICY WHITE
- D** STOREFRONT SYSTEM: 1" INSULATED GLAZING, VIBRO FRAMES AND SOLARSHAI 777 WITH CLEAR ANNOZED ALUMINUM FRAME
- E** 8 X 8 X 1/8" STANDARD CMU, OLDCASTLE SUPERLITE-ECHELON INTEGRAL COLOR, MOJAVE BROWN-COCOA BROWN

KEYNOTES

- 03-001 EXTERIOR CONCRETE TILT PANEL WALL - UNPAINTED AT INTERIOR, PAINTED AT EXTERIOR PER ELEVATIONS INCLUDING BACK SIDE OF PARAPET.
- 03-009 TILT PANEL REVEAL
- 05-002 CMU GUARDRAIL, 42" MIN @ AFF
- 05-015 HIDE FLANGE COLUMN
- 08-001 STOREFRONT SYSTEM
- 08-002 HOLLOW METAL DOOR, PAINTED
- 08-003 OVERHEAD SECTIONAL DOOR, PAINTED
- 08-006 SPANDREL AT STOREFRONT SYSTEM
- 10-010 FIRE DEPARTMENT CONNECTION
- 26-001 FUTURE ROOF-MECHANICAL UNIT SCREENED BY PARAPET
- 26-001 WALL-MOUNTED LIGHT FIXTURE

DEUTSCH ARCHITECTURE GROUP
4600 E INDIAN SCHOOL RD., PHOENIX, ARIZONA 85018
602.940.2929 2929.CDM

REGISTERED ARCHITECT
66385
KAREN OHMANN
10/10/2008
Expires 10/30/27

LONGBOW 202 SHELL BUILDING
5818 E. MCDOWELL ROAD, MESA, AZ 85215

FIRST ISSUED: 11/07/24

REVISIONS

No.	DATE	DESCRIPTION

PROJECT NO: 24154.00
DRAWN BY: CM, RH, FO
CHECKED BY: KO
COPYRIGHT 2024: DEUTSCH ARCHITECTURE GROUP

EXTERIOR ELEVATIONS

NORTH ELEVATION

MATERIAL	AREA (SF)	%
CONCRETE TILT WALL		
COLOR A	1789	0.190
COLOR B	5478	0.582
WINDOWS	2119	0.225
CANOPY	0	0.000
OH DOOR	0	0.000
HM DOOR	24	0.003
	9410	1.000

EAST ELEVATION

MATERIAL	AREA (SF)	%
CONCRETE TILT WALL		
COLOR A	6903	0.394
COLOR B	8396	0.480
WINDOWS	743	0.042
CANOPY	0	0.000
OH DOOR	1322	0.076
HM DOOR	143	0.008
	17507	1.000

SOUTH ELEVATION

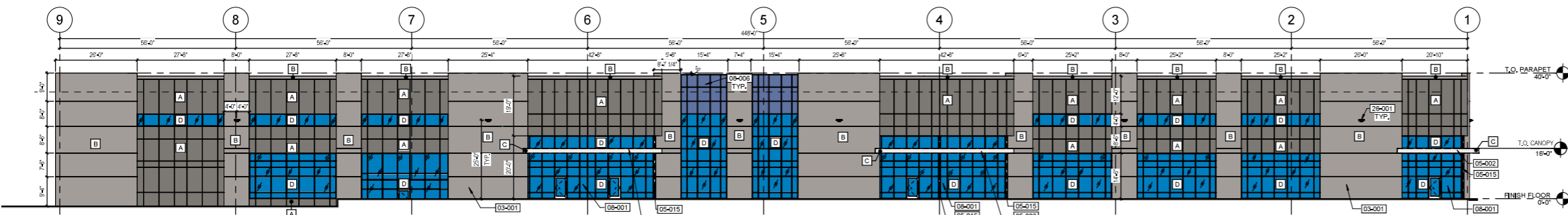
MATERIAL	AREA (SF)	%
CONCRETE TILT WALL		
COLOR A	2350	0.280
COLOR B	3263	0.389
WINDOWS	2653	0.316
CANOPY	79	0.009
OH DOOR	0	0.000
HM DOOR	48	0.006
	8393	1.000

WEST ELEVATION

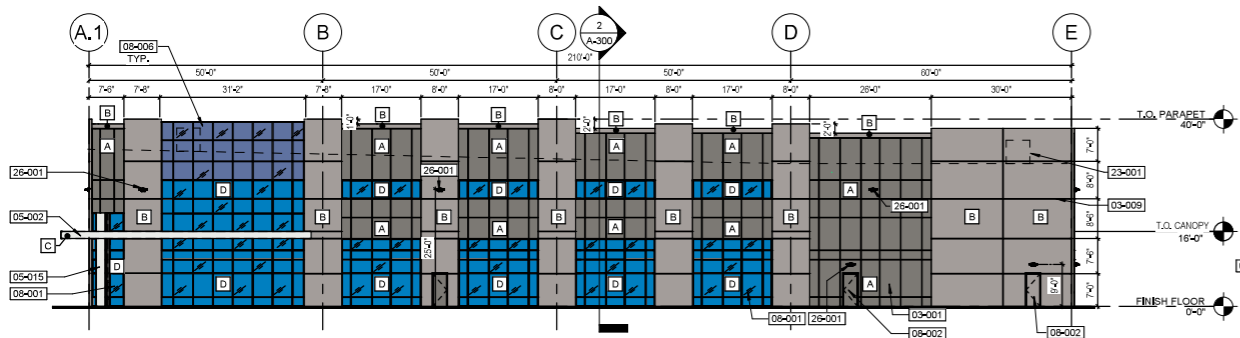
MATERIAL	AREA (SF)	%
CONCRETE TILT WALL		
COLOR A	5497	0.297
COLOR B	6784	0.367
WINDOWS	5988	0.324
CANOPY	238	0.013
OH DOOR	0	0.000
HM DOOR	0	0.000
	18507	1.000

© 2024 DEUTSCH ARCHITECTURE GROUP 11/17/2024 12:54:45 PM C:\Users\kjohn\Documents\24154-Longbow-McDowell and Shell Co. -\CD\Arch\A-200\A-200-Ext\11/17/2024\11/17/2024.dwg

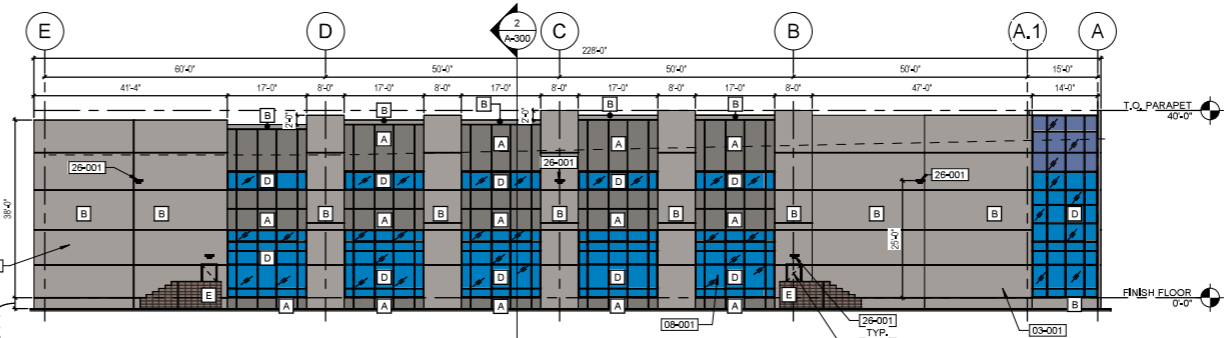
CONCEPTUAL AND SCHEMATIC DESIGNS, INCLUDING RENDERINGS, ARE CREATED FOR THE SOLE PURPOSE OF DEVELOPING A DESIGN CONCEPT. THEY ARE PART OF THE OVERALL DESIGN PROCESS THAT ULTIMATELY LEADS TO MORE DETAILED DRAWINGS, BUT THE INFORMATION DEPICTED IN THESE DESIGNS IS INCOMPLETE AND NOT INTENDED TO REPRESENT THE FULL SCOPE OF THE PROJECT DESIGN. THE USE OF THESE CONCEPTUAL AND SCHEMATIC DESIGNS/RENDERINGS FOR ANY PURPOSE OTHER THAN AS INTENDED BY THE ARCHITECT IS PROHIBITED.



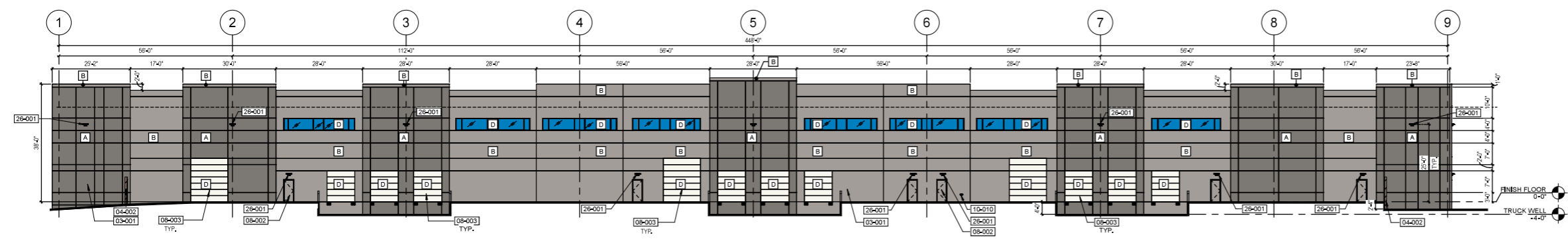
1 WEST ELEVATION
SCALE 1/16" = 1'-0"



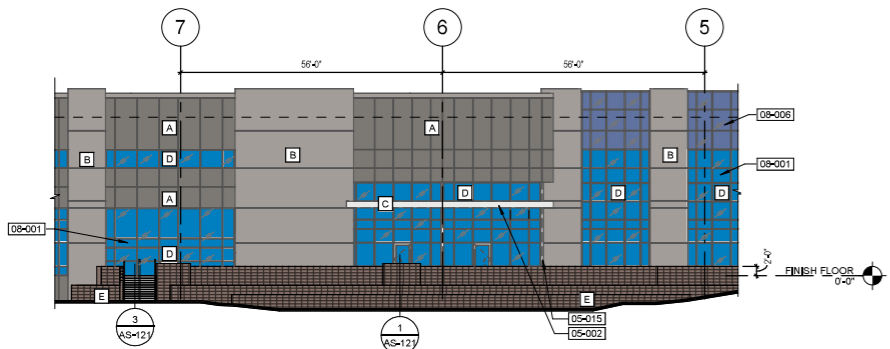
2 SOUTH ELEVATION
SCALE 1/16" = 1'-0"



3 NORTH ELEVATION
SCALE 1/16" = 1'-0"



4 EAST ELEVATION
SCALE 1/16" = 1'-0"



5 WEST PLANTER ELEVATION
SCALE 1/16" = 1'-0"

EXTERIOR MATERIAL LEGEND

COLOR PALETTE "A" PER LONGBOW DESIGN GUIDELINES

- A** SW7015 - GAUNTLET GRAY, LRV17
- B** SW9167 - POLISHED CONCRETE, LRV32
- C** ACCENT COLOR DEHW10 - ICY WHITE
- D** STOREFRONT SYSTEM: 1" INSULATED GLAZING, MERO FRAMES AND SOLARBAN 77 WITH CLEAR ANODIZED ALUMINUM FRAME
- E** 8' X 8' 1/2" STANDARD CMU OLDCASTLE SUPERLITE-ECHOLON INTEGRAL COLOR MOJAVE BROWN-COCOA BROWN

KEYNOTES

- 03-001 EXTERIOR CONCRETE TILT PANEL WALL - UNPAINTED AT INTERIOR, PAINTED AT EXTERIOR PER ELEVATIONS INCLUDING BACK SIDE OF PARAPET.
- 03-009 TILT PANEL REVEAL
- 03-002 CMU GUARDRAIL, 42" MIN @ AFF
- 05-002 STEEL CANOPY, PAINTED
- 05-015 HIDE FLANGE COLUMN
- 08-001 STOREFRONT SYSTEM
- 08-002 HOLLOW METAL DOOR, PAINTED
- 08-003 OVERHEAD SECTIONAL DOOR, PAINTED
- 08-006 SPANDREL AT STOREFRONT SYSTEM
- 15-010 FIRE DEPARTMENT CONNECTION
- 25-001 FUTURE ROOF-MECHANICAL UNIT SCREENED BY PARAPET
- 26-001 WALL-MOUNTED LIGHT FIXTURE

DEUTSCH
ARCHITECTURE GROUP

4600 E INDIAN SCHOOL RD.
PHOENIX, ARIZONA 85018
602.940.2929 2929.COM

REGISTERED ARCHITECT
66385
KAREN
OHMANN
K. Ohmann
Expires 10/30/27

LONGBOW 202 SHELL BUILDING
5818 E. MCDOWELL ROAD, MESA, AZ 85215

FIRST ISSUED: 11/07/24

REVISIONS

No.	DATE	DESCRIPTION

PROJECT NO: 24154.00
DRAWN BY: CM, RH, FO
CHECKED BY: KO
COPYRIGHT 2024: DEUTSCH ARCHITECTURE GROUP

EXTERIOR ELEVATIONS

A-200

NORTH ELEVATION			EAST ELEVATION		
MATERIAL	AREA (SF)	%	MATERIAL	AREA (SF)	%
CONCRETE TILT WALL			CONCRETE TILT WALL		
COLOR A	1789	0.190	COLOR A	6903	0.394
COLOR B	5478	0.582	COLOR B	8396	0.480
WINDOWS	2119	0.225	WINDOWS	743	0.042
CANOPY	0	0.000	CANOPY	0	0.000
OH DOOR	0	0.000	OH DOOR	1322	0.076
HM DOOR	24	0.003	HM DOOR	143	0.008
	9410	1.000		17507	1.000

SOUTH ELEVATION			WEST ELEVATION		
MATERIAL	AREA (SF)	%	MATERIAL	AREA (SF)	%
CONCRETE TILT WALL			CONCRETE TILT WALL		
COLOR A	2350	0.280	COLOR A	5497	0.297
COLOR B	3263	0.389	COLOR B	6784	0.367
WINDOWS	2653	0.316	WINDOWS	5988	0.324
CANOPY	79	0.009	CANOPY	238	0.013
OH DOOR	0	0.000	OH DOOR	0	0.000
HM DOOR	48	0.006	HM DOOR	0	0.000
	8393	1.000		18507	1.000

© 2024 DEUTSCH ARCHITECTURE GROUP 11/7/2024 12:52:53 PM C:\Users\kjh\OneDrive\Documents\24154-Longbow 202 Shell\CMU\Contactor\1-16-24\A-200.dwg

CONCEPTUAL AND SCHEMATIC DESIGNS, INCLUDING RENDERINGS, ARE CREATED FOR THE SOLE PURPOSE OF DEVELOPING A DESIGN CONCEPT. THEY ARE PART OF THE OVERALL DESIGN PROCESS THAT ULTIMATELY LEADS TO MORE DETAILED DRAWINGS, BUT THE INFORMATION DEPICTED IN THESE DESIGNS IS INCOMPLETE AND NOT INTENDED TO REPRESENT THE FULL SCOPE OF THE PROJECT DESIGN. THE USE OF THESE CONCEPTUAL AND SCHEMATIC DESIGNS/RENDERINGS FOR ANY PURPOSE OTHER THAN AS INTENDED BY THE ARCHITECT IS PROHIBITED.

PRELIMINARY - NOT FOR CONSTRUCTION



Longbow 202 Shell Building

Exterior Perspective

24154.00

11/07/24

1

SOUTHWEST PERSPECTIVE - DAYTIME

SCALE

1/4" = 1'-0"

CONCEPTUAL AND SCHEMATIC DESIGNS, INCLUDING RENDERINGS, ARE CREATED FOR THE SOLE PURPOSE OF DEVELOPING A DESIGN CONCEPT. THEY ARE PART OF THE OVERALL DESIGN PROCESS THAT ULTIMATELY LEADS TO MORE DETAILED DRAWINGS, BUT THE INFORMATION DEPICTED IN THESE DESIGNS IS INCOMPLETE AND NOT INTENDED TO REPRESENT THE FULL SCOPE OF THE PROJECT DESIGN. THE USE OF THESE CONCEPTUAL AND SCHEMATIC DESIGNS/RENDERINGS FOR ANY PURPOSE OTHER THAN AS INTENDED BY THE ARCHITECT IS PROHIBITED.



**4600 E INDIAN SCHOOL RD.
PHOENIX, ARIZONA 85018
602.840.2929 2929.COM**



2 **SOUTHWEST PERSPECTIVE - NIGHTTIME**
SCALE:

CONCEPTUAL AND SCHEMATIC DESIGNS, INCLUDING RENDERINGS, ARE CREATED FOR THE SOLE PURPOSE OF DEVELOPING A DESIGN CONCEPT. THEY ARE PART OF THE OVERALL DESIGN PROCESS THAT ULTIMATELY LEADS TO MORE DETAILED DRAWINGS, BUT THE INFORMATION DEPICTED IN THESE DESIGNS IS INCOMPLETE AND NOT INTENDED TO REPRESENT THE FULL SCOPE OF THE PROJECT DESIGN. THE USE OF THESE CONCEPTUAL AND SCHEMATIC DESIGNS/RENDERINGS FOR ANY PURPOSE OTHER THAN AS INTENDED BY THE ARCHITECT IS PROHIBITED.

Longbow 202 Shell Building

EXTERIOR PERSPECTIVE

24154.00

11/07/24



**4600 E INDIAN SCHOOL RD.
PHOENIX, ARIZONA 85018
602.840.2929 2929.COM**



3

NORTHWEST PERSPECTIVE

SCALE:

CONCEPTUAL AND SCHEMATIC DESIGNS, INCLUDING RENDERINGS, ARE CREATED FOR THE SOLE PURPOSE OF DEVELOPING A DESIGN CONCEPT. THEY ARE PART OF THE OVERALL DESIGN PROCESS THAT ULTIMATELY LEADS TO MORE DETAILED DRAWINGS, BUT THE INFORMATION DEPICTED IN THESE DESIGNS IS INCOMPLETE AND NOT INTENDED TO REPRESENT THE FULL SCOPE OF THE PROJECT DESIGN. THE USE OF THESE CONCEPTUAL AND SCHEMATIC DESIGNS/RENDERINGS FOR ANY PURPOSE OTHER THAN AS INTENDED BY THE ARCHITECT IS PROHIBITED.

Longbow 202 Shell Building

EXTERIOR PERSPECTIVE

24154.00

11/07/24



4600 E INDIAN SCHOOL RD.
PHOENIX, ARIZONA 85018
602.840.2929 2929.COM



4

CENTER WEST ENTRY PERSPECTIVE

SCALE

1/4" = 1'-0"

CONCEPTUAL AND SCHEMATIC DESIGNS, INCLUDING RENDERINGS, ARE CREATED FOR THE SOLE PURPOSE OF DEVELOPING A DESIGN CONCEPT. THEY ARE PART OF THE OVERALL DESIGN PROCESS THAT ULTIMATELY LEADS TO MORE DETAILED DRAWINGS, BUT THE INFORMATION DEPICTED IN THESE DESIGNS IS INCOMPLETE AND NOT INTENDED TO REPRESENT THE FULL SCOPE OF THE PROJECT DESIGN. THE USE OF THESE CONCEPTUAL AND SCHEMATIC DESIGNS/RENDERINGS FOR ANY PURPOSE OTHER THAN AS INTENDED BY THE ARCHITECT IS PROHIBITED.

Longbow 202 Shell Building

EXTERIOR PERSPECTIVE

24154.00

11/07/24



4600 E INDIAN SCHOOL RD.
PHOENIX, ARIZONA 85018
602.840.2929 2929.COM