



Design Review Board



DRB24-01010

Medina Station Freeway

Landmark Monument

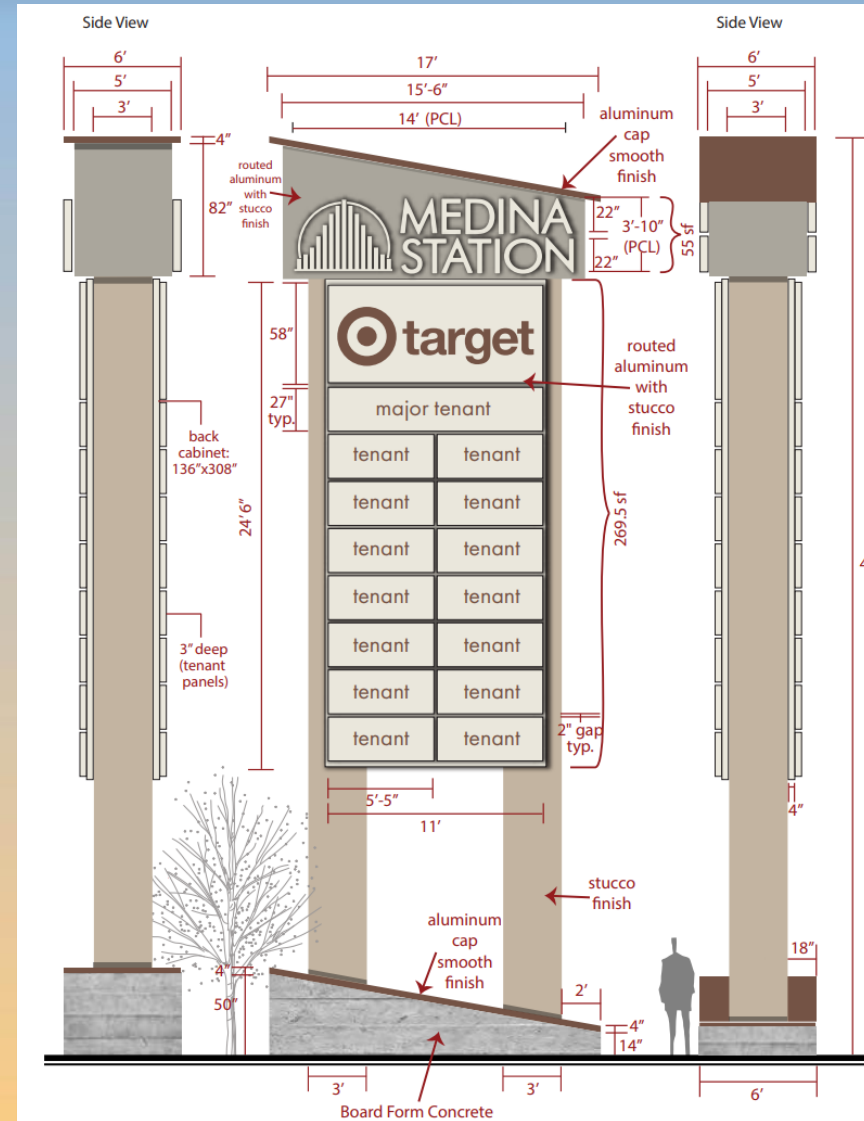
Cassidy Welch, Principal Planner

March 11, 2025



Request

- Design Review
- Freeway Landmark Monument (FLM)





Location

- South of Southern Avenue
- East of Signal Butte Road
- North of US-60 Freeway

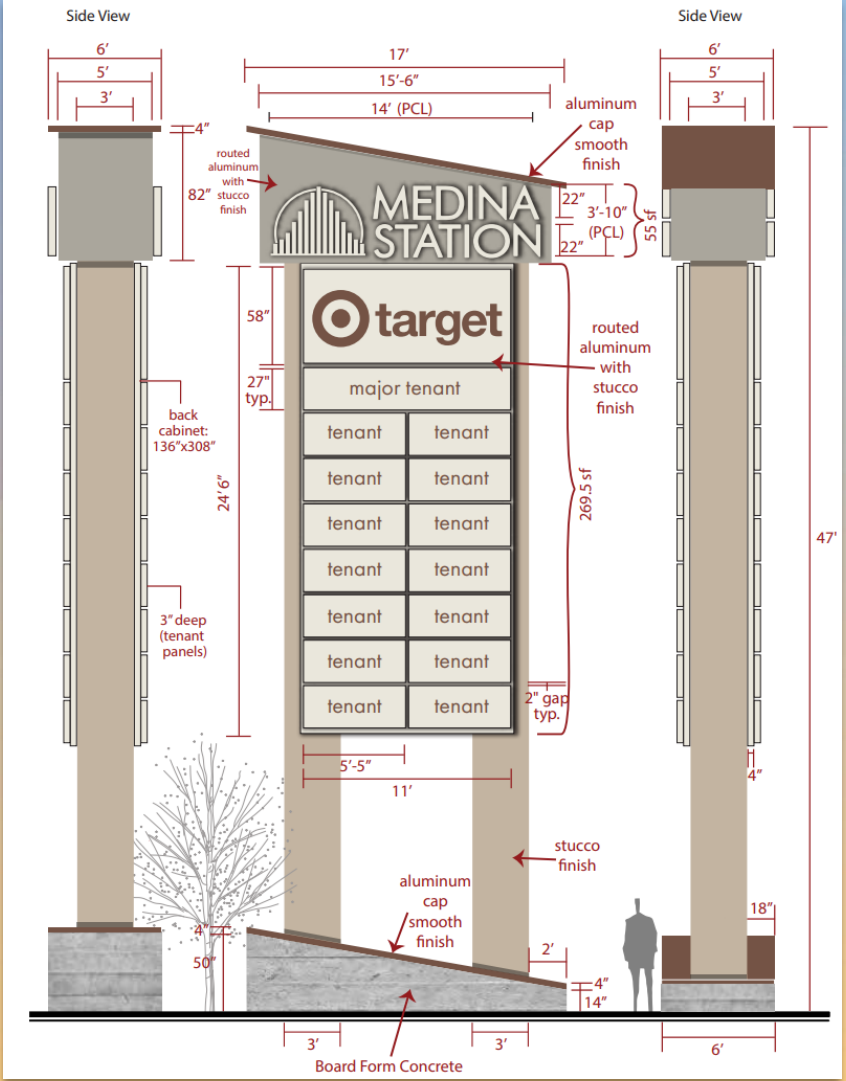




Site Photos



Looking east towards the site



Elevations

Compliance with Medina Station Design Guidelines:

- Simple, abstract rectangular forms
- Use of modern materials
- Limited ornamentation with decorative trims
- Desert tans and grays are encouraged



Renderings





Renderings





Findings

Staff is seeking your review and recommendation on the following:

- ✓ Complies with the 2040 Mesa General Plan
- ✓ Complies with FLM criteria

Staff recommends Approval with Conditions



Design Review Board