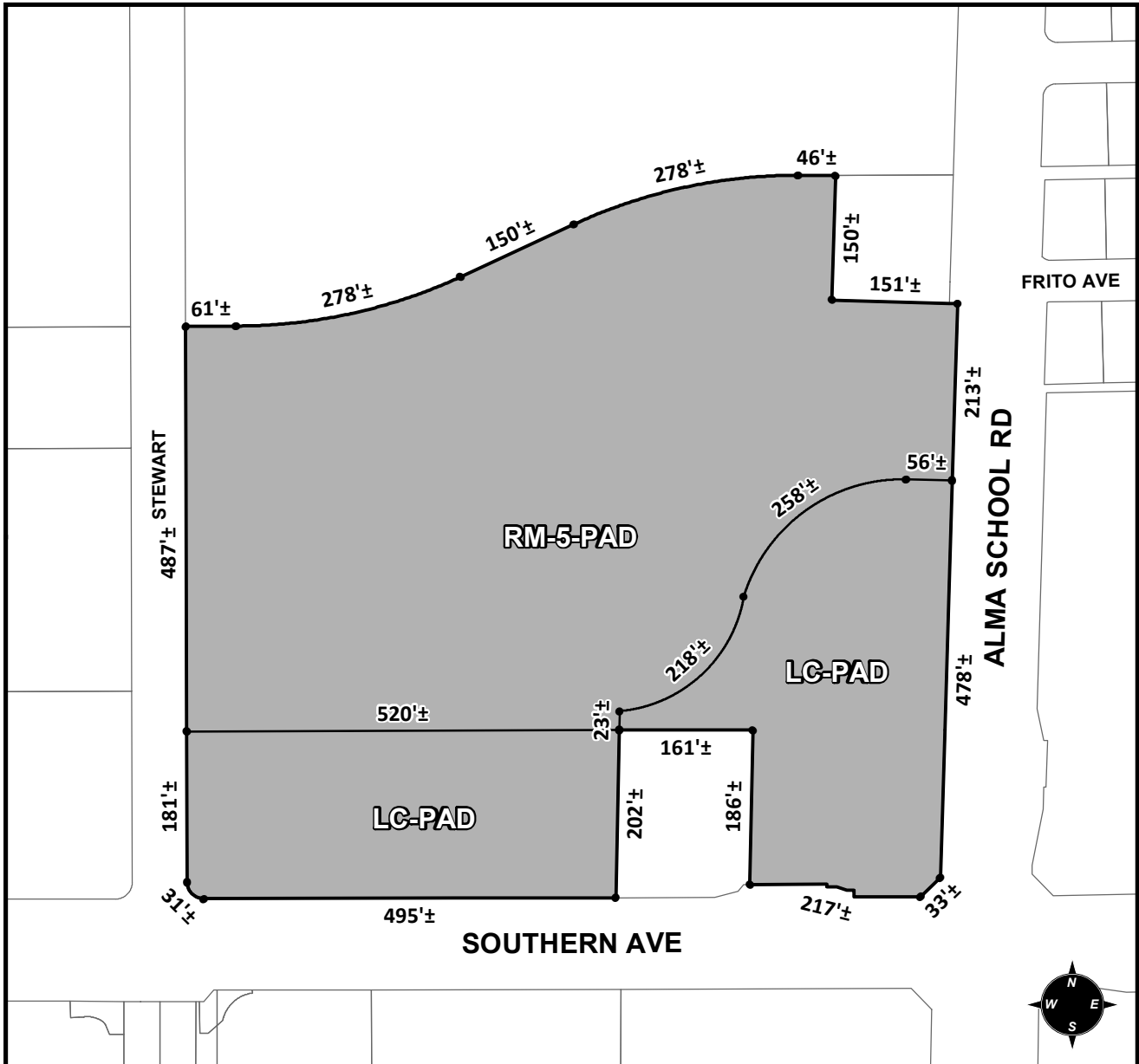




OFFICIAL SUPPLEMENTARY ZONING MAP AMENDING THE CITY OF MESA ZONING MAP



CASE: ZON18-00066
 ACREAGE: 16±
 REQUEST: REZONE FROM LC TO RM-5-PAD (10.5± ACRES) AND LC TO LC-PAD (5.5± ACRES)

ORDINANCE: _____

Please be advised that the attached zoning changes were approved by the Mesa City Council on _____, 2018 by Ordinance # _____. If you have any questions concerning these changes, contact the City of Mesa Planning Division at 480-644-2385.

_____ ATTEST: _____ DATE: _____
 MAYOR CITY CLERK