

August 9, 2023
3 Engineering Job No. 2121

EXHIBIT A
TEMPORARY RETENTION BASIN EASEMENT ABANDONMENT
LEGAL DESCRIPTION

A PORTION OF THAT CERTAIN 60-FOOT TEMPORARY RETENTION BASIN EASEMENT "H" DEDICATED ON LOTS 2, 3 AND 4, THE FINAL PLAT OF **ARIZONA HEALTH AND TECHNOLOGY PARK**, RECORDED IN BOOK 595 OF MAPS, PAGE 35, RECORDS OF MARICOPA COUNTY, ARIZONA, AND SHOWN ON LOT 1 OF THE SUBDIVISION PLAT FOR ARIZONA HEALTH AND TECHNOLOGY PARK-UNIT 2, RECORDED IN BOOK 1005 OF MAPS, PAGE 18 RECORDS OF MARICOPA COUNTY, ARIZONA, AND ALSO SHOWN ON LOT 1B OF **AMENDED LAND SPLIT**, RECORDED IN BOOK 1374 OF MAPS, PAGE 43, RECORDS OF SAID COUNTY MORE PARTICULARLY DESCRIBED AS FOLLOWS;

BEGINNING AT THE SOUTHEAST CORNER OF SAID LOT 1B;

THENCE SOUTH 89 DEGREES 40 MINUTES 44 SECONDS WEST ALONG THE SOUTH LINE OF SAID LOT 1B A DISTANCE OF 60.00 FEET;

THENCE NORTH 00 DEGREES 18 MINUTES 56 SECONDS WEST A DISTANCE OF 514.40 FEET;

THENCE ALONG AN ARC 115.20 FEET TO THE LEFT, HAVING A RADIUS OF 635.00 FEET, THE CHORD OF WHICH IS NORTH 05 DEGREES 30 MINUTES 46 SECONDS WEST FOR A DISTANCE OF 115.04 FEET TO THE NORTH LINE OF SAID LOT 1B;

THENCE NORTH 75 DEGREES 40 MINUTES 54 SECONDS EAST ALONG SAID NORTH LINE A DISTANCE OF 33.11 FEET;

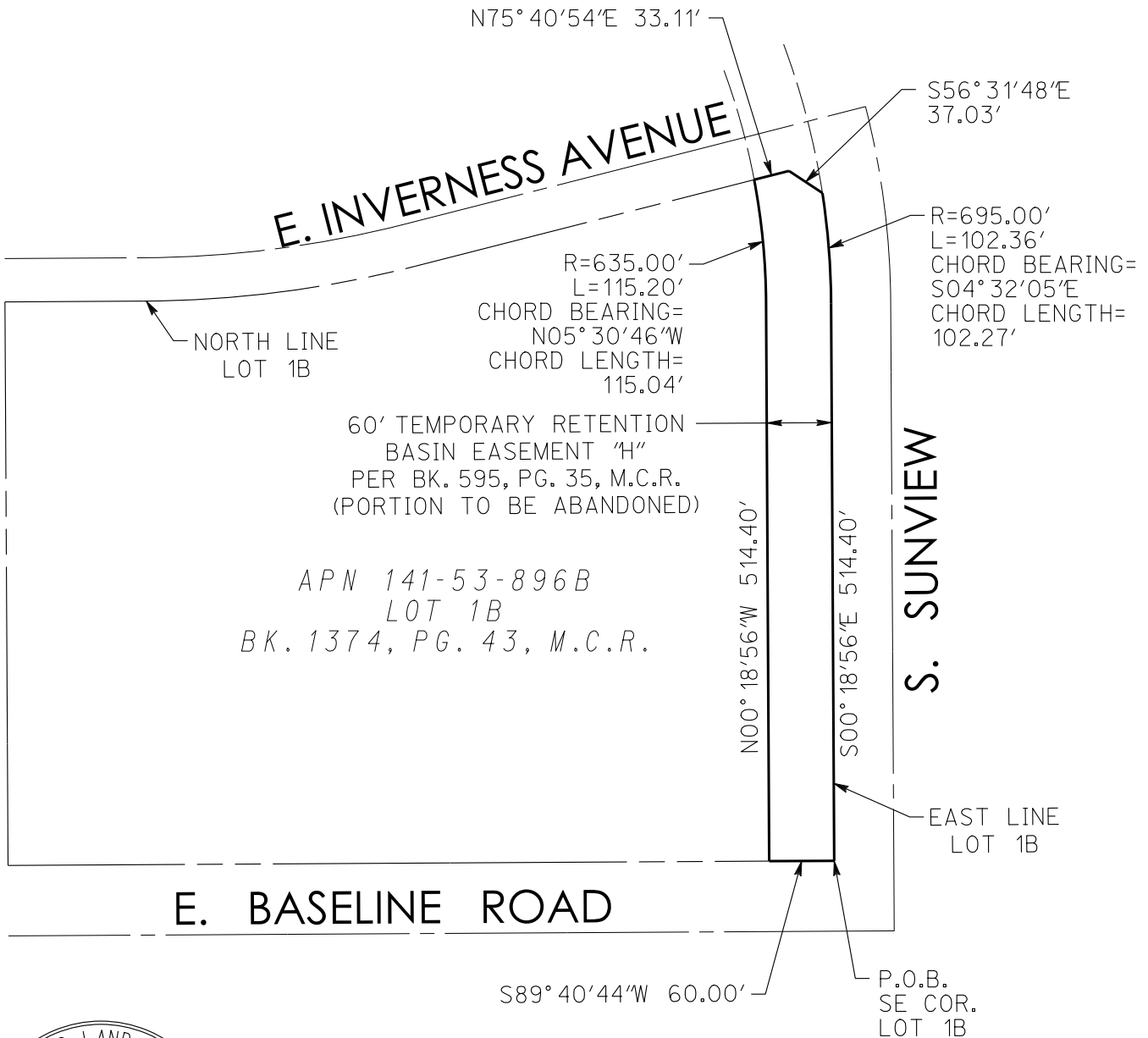
THENCE SOUTH 56 DEGREES 31 MINUTES 48 SECONDS EAST A DISTANCE OF 37.03 FEET TO THE EAST LINE OF SAID LOT 1B;

(THE FOLLOWING 2 COURSES RUN ALONG SAID EAST LINE)

THENCE ALONG AN ARC 102.36 FEET TO THE RIGHT, HAVING A RADIUS OF 695.00 FEET, THE CHORD OF WHICH IS SOUTH 04 DEGREES 32 MINUTES 05 SECONDS EAST FOR A DISTANCE OF 102.27 FEET;

THENCE SOUTH 00 DEGREES 18 MINUTES 56 SECONDS EAST A DISTANCE OF 514.40 FEET TO THE **POINT OF BEGINNING.**

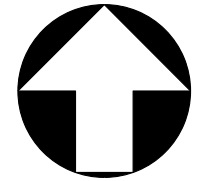
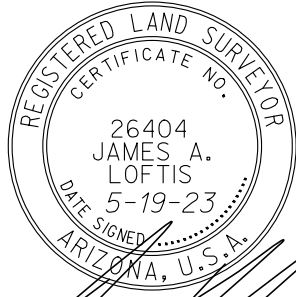




APN 141-53-896B
 LOT 1B
 BK. 1374, PG. 43, M.C.R.

LEGEND

- P.O.B. INDICATES POINT OF BEGINNING
- R INDICATES RADIUS
- L INDICATES ARC LENGTH



SCALE: 1"=150'

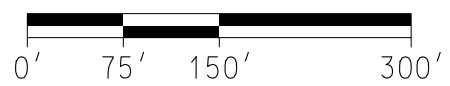


EXHIBIT "A"

**TEMPORARY RETENTION BASIN
 EASEMENT ABANDONMENT**



3 ENGINEERING, LLC
 6370 E. THOMAS ROAD, SUITE # 200 - SCOTTSDALE, ARIZONA 85251
 PHONE: (602) 334-4387 - FAX: (602) 490-3230
 WWW.3ENGINEERING.COM

DATE:	PROJECT NO.
5/19/23	2121