

ES1.0DR

the architectural design and data contained in these documents is an instrument of service provided by FINN architects, llc.

all discrepancies found in these documents, or conflicts between these documents and actual field conditions shall be reported to FINN architects, llc for resolution prior to commencement of the work.

discrepancies between bid amounts and these documents shall be reported to the general contractor prior to commencement of work.

notice of alternate billing cycle: this contract allows the owner to require submission of billings or estimates in billing cycles other than thirty days. a written description of such other billing cycle applicable to this project is available from the owner/owner's designated agent (see cover sheet for phone/address of owner) and the owner/designated agent shall provide this written description upon request.

december 06, 2024
schematic design
december 10, 2024
pre-application
february 06, 2025
team sp/scip/dbs kickoff
february 18, 2024
design development



UTV Stereo
PERFORMANCE AUDIO
a building expansion
7561 east baseline road,
mesa, arizona



FINN architects, llc
506 west perkins street, san tan valley, arizona 85143
finnarchitects.com
(480-206-8229)

KEYED NOTES	
1	ELECTRICAL CONTRACTOR SHALL PROVIDE LIGHT SHIELD TO EXISTING LIGHTING FIXTURE.

LIGHT FIXTURE SCHEDULE					
TAG	VOLTS	MANUFACTURER	PART #	LAMPING CCT/WATTS	DESCRIPTION/NOTES
SA	MVOLT	LITHONIA	WDGE2-LED-P5-30K-80CRI-SRM	LED (5921 lumens) 3000K/48W	LED WALL-PACK FIXTURE WITH 0-10V DIMMING DRIVER. VERIFY FINISH AND ALL OPTIONS.
SB	MVOLT	LITHONIA	WDGE2-LED-P3-30K-80CRI-VW-SRM	LED (3092 lumens) 3000K/23W	LED WALL-PACK FIXTURE WITH 0-10V DIMMING DRIVER. VERIFY FINISH AND ALL OPTIONS.
SBE	MVOLT	LITHONIA	WDGE2-LED-P3-30K-80CRI-VW-SRM-E10WH	LED (3092 lumens) 3000K/23W	LED WALL-PACK FIXTURE WITH 0-10V DIMMING DRIVER & 90-MINUTE EMERGENCY BATTERY BACK-UP. VERIFY FINISH AND ALL OPTIONS.
SC	MVOLT	LITHONIA	LDN6-30/10-L06AR-LSS-GZ10	LED (1514 lumens) 3000K/18W	16" LED WET LOCATION DOWNLIGHT WITH 0-10V 10% DIMMING DRIVER. VERIFY ALL OPTIONS.
SCE	MVOLT	LITHONIA	LDN6-30/10-L06AR-LSS-GZ10-EL	LED (1514 lumens) 3000K/18W	16" LED WET LOCATION DOWNLIGHT WITH 0-10V 10% DIMMING DRIVER & 90-MINUTE EMERGENCY BATTERY BACK-UP. VERIFY ALL OPTIONS.
SCHEDULE NOTES: 1. ALL EMERGENCY FIXTURE SHALL PROVIDE MINIMUM OF 90-MINUTE BATTERY BACK-UP, UNLESS A LIFE SAFETY GENERATOR IS PRESENT, THEN CONNECT TO EMERGENCY BACKED CIRCUITING IN THE AREA. IF THE GENERAL LIGHTING IN THE AREA IS HID, ALL FIXTURES IN THE AREA SHALL HAVE A MINIMUM OF A 10-MINUTE TIME DELAY. 2. ELECTRICAL CONTRACTOR SHALL PROVIDE A BASE BID OFF THIS LIGHT FIXTURE SCHEDULE. ALTERNATES MAY BE SUBMITTED AFTER AWARD OF CONTRACT. PROVIDING THEY ARE SUBMITTED WITH WRITTEN OWNER APPROVAL AND ITEMIZED DEDUCT FROM THE BASE BID. ANY RE-DESIGN REQUIRED BY AN ALTERNATE PACKAGE SHALL BE BILLED TO THE ELECTRICAL CONTRACTOR. 3. MODULAR WIRING IS ACCEPTABLE. 4. ALL DIMMED EMERGENCY FIXTURES SHALL BE PROVIDED WITH UL924 SHUNT RELAY DEVICE WHEN NOT PROVIDED INTEGRAL TO LIGHT FIXTURE. 5. ALL DIMMED LIGHTING ZONES SHALL HAVE DEDICATED NEUTRAL.					

electrical site lighting plan
scale: 1"=20'-0"

WELCH & SANDON DESIGN LLC, SHALL NOT BE HELD RESPONSIBLE FOR CHANGES THAT MAY OCCUR SHOULD FINAL BIDS AND/OR CONSTRUCTION BASED ON THESE DOCUMENT BE STARTED PRIOR TO PERMIT BEING ISSUED BY AHA.

WELCH & SANDON DESIGN, LLC
ELECTRICAL CONSULTING ENGINEERS
PROJECT CONTACT: GABRIEL
WSD PROJECT# 25-016
4864 E. BASELINE ROAD, SUITE #103
MESA, AZ 85206
PHONE 480.641.6383
www.welch-sandon.com

the architectural design and data contained in these documents is an instrument of service provided by FINN architects, llc.

all discrepancies found in these documents, or conflicts between these documents and actual field conditions shall be reported to FINN architects, llc for resolution prior to commencement of the work.

discrepancies between bid amounts and these documents shall be reported to the general contractor prior to commencement of work.

notice of alternate billing cycle: this contract allows the owner to require submission of billings or estimates in billing cycles other than thirty days. a written description of such other billing cycle applicable to this project is available from the owner/owner's designated agent (see cover sheet for phone/address of owner) and the owner/designated agent shall provide this written description upon request.

december 06, 2024
schematic design
december 10, 2024
pre-application
february 06, 2025
team sp/scip/dbs kickoff
february 18, 2024
design development



UTV Stereo
PERFORMANCE AUDIO
a building expansion
7561 east baseline road,
mesa, arizona

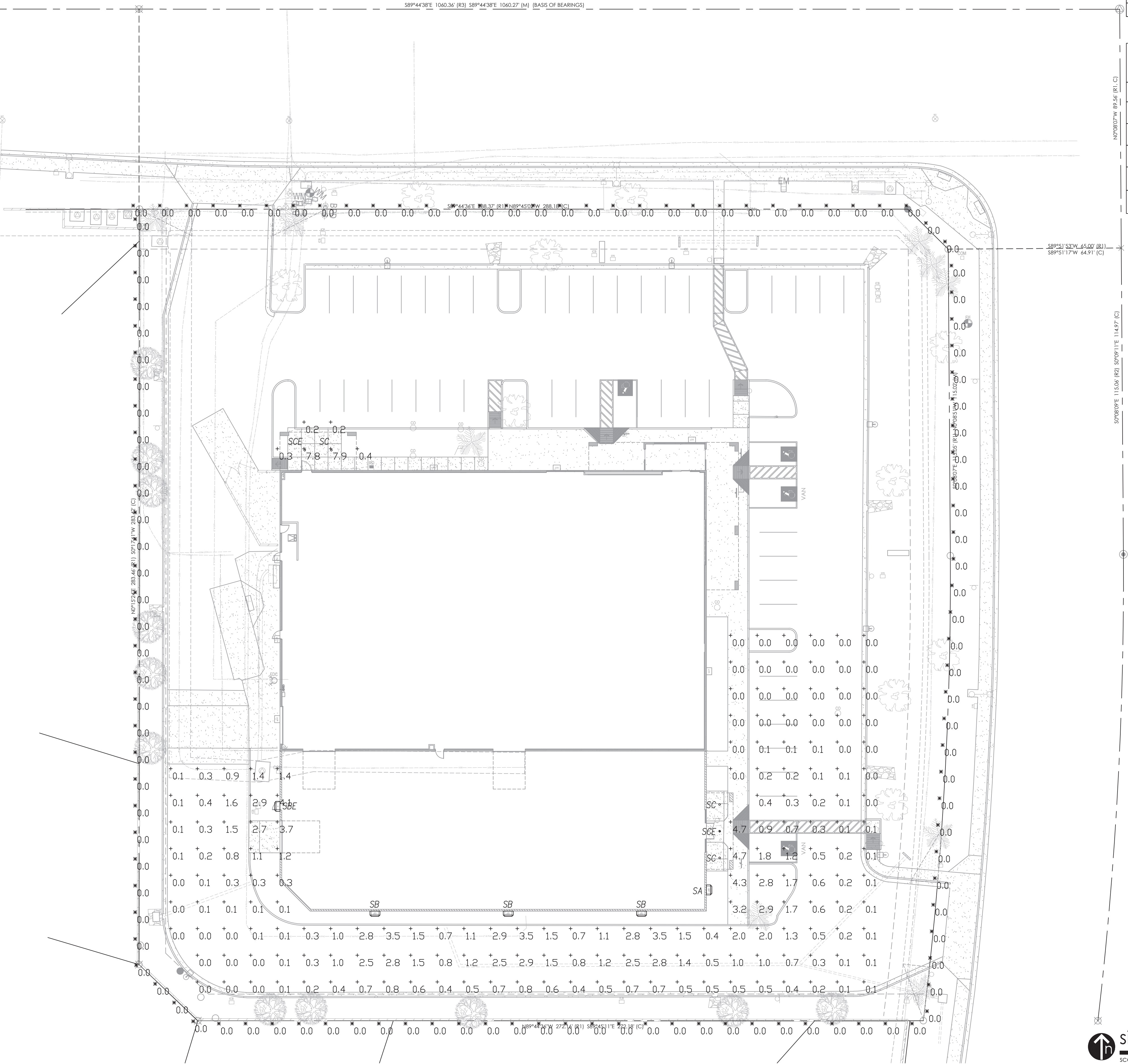


STATISTICS

DESCRIPTION	SYMB	AVG	MAX	MIN	MAX/MIN	AVG/MIN
PROPERTY LINE - FC @ 3' AFG	X	0.0 fc	0.0 fc	0.0 fc	N/A	N/A
SITE - FC @ GRADE	+	0.9 fc	7.9 fc	0.0 fc	N/A	N/A

SCHEDULE

LABEL	MANUF.	CATALOG NUMBER	DESCRIPTION	LAMP
SA	LITHONIA	WDGE2 LED P5 30K 80CRI VW SRM (FINISH)	WALL PACK WITH VISUAL COMFORT TYPE 5	LED - 3000K
SB	LITHONIA	WDGE2 LED P3 30K 80CRI VW SRM (FINISH)	WALL PACK WITH VISUAL COMFORT TYPE 3	LED - 3000K
SBE	LITHONIA	WDGE2 LED P3 30K 80CRI VW SRM E10WH (FINISH)	WALL PACK WITH EM BATTERY PACK & VISUAL COMFORT - TYPE 3	LED - 3000K
SC	LITHONIA	LDN6 30/10 L06AR LSS MVOLT GZ10	6" RECESSED DOWNLIGHT	LED - 3000K
SCE	LITHONIA	LDN6 30/10 L06AR LSS MVOLT GZ10 EL	6" RECESSED DOWNLIGHT WITH EM BATTERY PACK	LED - 3000K



site photometrics plan

scale: 1"=20'-0"

WELCH & SANDON DESIGN LLC, SHALL NOT BE HELD RESPONSIBLE FOR CHANGE ORDERS THAT MAY OCCUR SHOULD FINAL BIDS AND/OR CONSTRUCTION BASED ON THESE DOCUMENT BE STARTED PRIOR TO PERMIT BEING ISSUED BY AHA.

WELCH & SANDON DESIGN, LLC
ELECTRICAL CONSULTING ENGINEERS
PROJECT CONTACT: GABRIEL
WSD PROJECT# 25-016
4864 E. BASELINE ROAD, SUITE #103
MESA, AZ 85206
PHONE 480.641.6383
www.welch-sandon.com

E3.0DR

the architectural design and data contained in these documents is an instrument of service provided by FINN architects, llc.

all discrepancies found in these documents, or conflicts between these documents and actual field conditions shall be reported to FINN architects, llc for resolution prior to commencement of the work.

discrepancies between bid amounts and these documents shall be reported to the general contractor prior to commencement of work.

notice of alternate billing cycle: this contract allows the owner to require submission of billing estimates in billing cycles other than thirty days. a written description of such other billing cycle applicable to this project is available from the owner/owner's designated agent (see cover sheet for phone/address of owner) and the owner/designated agent shall provide this written description upon request.

december 06, 2024
schematic design
december 10, 2024
pre-application
february 06, 2025
team sp/cip/dbs kickoff
february 18, 2024
design development



UTV Stereo
PERFORMANCE AUDIO
a building expansion
7561 east baseline road,
mesa, arizona



WELCH & SANDON DESIGN LLC, SHALL NOT BE HELD RESPONSIBLE FOR CHANGE ORDERS THAT MAY OCCUR SHOULD FINAL BIDS AND/OR CONSTRUCTION BASED ON THESE DOCUMENT BE STARTED PRIOR TO PERMIT BEING ISSUED BY AHA.

WELCH & SANDON DESIGN, LLC
ELECTRICAL CONSULTING ENGINEERS

PROJECT CONTACT: GABRIEL

WSD PROJECT# 25-016

4864 E. BASELINE ROAD, SUITE #103
MESA, AZ 85206
PHONE 480.641.6383
www.welch-sandon.com

FINN architects, llc
finnarchitects.com
506 west perkins street, san tan valley, arizona 85143
(480-206-8229)

WDGE2 LED
Architectural Wall Sconce
Visual Comfort Optic

Specifications
Depth (D1): 7"
Depth (D2): 1.5"
Height: 9"
Width: 11.5"
Weight: 13.5 lbs (without options)

Catalog Number: SA/SB/SBE

Notes

Type

Items marked by a shaded background qualify for the Design Select program and ship in 15 days or less. To learn more about Design Select, visit www.acuitybrands.com/designselect. *See ordering tree for details.

WDGE LED Family Overview

Luminaire	Optics	Standard Efficacy, 2°C	Light LM, 20°C	Sensor	P6	P1	P2	P3	P4	P5	P6
WDGE1 LED	Visual Comfort	4W	18W	Standalone / r/light	750	1,200	2,000	3,000	4,500	6,000	—
WDGE2 LED	Visual Comfort	10W	18W	Standalone / r/light	—	1,200	2,000	3,000	4,500	6,000	—
WDGE3 LED	Precision Reflective	10W	18W	Standalone / r/light	700	1,200	2,000	3,200	4,200	—	—
WDGE3 LED	Precision Reflective	15W	18W	Standalone / r/light	6,000	7,500	8,500	10,000	12,000	—	—
WDGE4 LED	Precision Reflective	—	—	Standalone / r/light	—	12,000	16,000	18,000	20,000	22,000	25,000

Ordering Information

EXAMPLE: WDGE2 LED P3 40K 80CRI VF VMVLT SRM DOBXD

Series	Package	Color Temperature	CRI	Distribution	Voltage	Mounting
WDGE2 LED	P1	P1SW	27K / 2700K	80CRI	VF	Visual comfort forward throw
	P2	P2SW	30K / 3000K	90CRI	VF	Visual comfort forward throw
	P3	P3SW	35K / 3500K	90CRI	VF	Visual comfort forward throw
	P4	P4SW	40K / 4000K	90CRI	VF	Visual comfort forward throw
	P5	P5SW	50K / 5000K	90CRI	VF	Visual comfort forward throw

Options

Option	Description	Option	Description
E4WH	Emergency battery backup, Certified in CA Title 20 MAE(S) (40W, 0°C min)	DOBXD	Dark bronze
E10WH	Emergency battery backup, Certified in CA Title 20 MAE(S) (10W, 0°C min)	DBLKD	Black
E20WH	Emergency battery backup, Certified in CA Title 20 MAE(S) (20W, 0°C min)	DNAXD	Natural aluminum
E30WH	Emergency battery backup, Certified in CA Title 20 MAE(S) (30W, 0°C min)	DWIXD	White
PE	PhotoCell, Button Type	DSKSD	Sandstone
DS	Dual switching (comes with 2 drivers and 2 light engines, see page 3 for details)	DOBTX	Textured dark bronze
DS	Dual switching (comes with 2 drivers and 2 light engines, see page 3 for details)	DBLTX	Textured black
DS	Dual switching (comes with 2 drivers and 2 light engines, see page 3 for details)	DNATX	Textured natural aluminum
BCE	Bottom conduit entry for back box (PB04). Total of 4 entry points.	DWIXSD	Textured white
DSLE	Dual Switching (1 Driver, 2 Light Engines)	DSKTX	Textured sandstone
COE	Coastal Construction?		

LITHONIA LIGHTING COMMERCIAL OUTDOOR One Lithonia Way • Conyers, Georgia 30012 • Phone: 1-800-705-SERV (3786) • www.lithonia.com

WDGE2 LED Rev. 02/24/25

LITHONIA LIGHTING

Catalog Number

Notes

Type: SC/SCE

FEATURES & SPECIFICATIONS

INTENDED USE — Typical applications include corridors, lobbies, conference rooms and private offices.

CONSTRUCTION — Galvanized steel mounting/plaster frame; galvanized steel junction box with bottom-hinged access covers and spring latches. Reflectors are retained by tension springs.

Vertically adjustable mounting brackets with commercial bar hangers provide 3-3/4" total adjustment. Two combination 1/2-3/4" and four 1/2" knockouts for straight through conduit runs. Capacity: 8 (4 in, 4 out). No. 12 AWG conductors, rated for 90°C.

Accommodates 12"-24" jacket spacing.

Passive cooling thermal management for 25°C standard; high ambient (40°C) option available. Light engine and drivers are accessible from above or below utility.

Max ceiling thickness: 1-1/2".

OPTICS — LEDs are binned to a 3-step MacAdam Ellipse; 80 CRI minimum; 90 CRI optional.

LED light source concealed with diffusing optical lens.

General illumination lighting with 1.5:1:1 and 5:1:1 ratio to source and source image.

Self-flanged anodized reflectors in specular, semi-specular, or matte diffuse finishes. Also available in white and black painted reflector.

A-CAPABLE LUMINAIRE — This item is an A+ capable luminaire, which has been designed and tested to provide consistent color appearance and out-of-the-box control compatibility with simple commissioning when used with Acuity Brands controls products. All configurations of this luminaire are calibrated and tested to meet the Acuity Brands' specifications for chromatic consistency — including color rendering, color fidelity and color temperature tolerance around standard CIE chromaticity coordinates. To learn more about A+ standards, specifications, and testing visit www.acuitybrands.com/ahp.

UGR — UGR is a measure for glare aimed at a reader with a cut-off equal to or less than 60deg per CIE117:1996 Discomfort Glare in Interior Lighting.

ELECTICAL — Multi-volt (120-277V, 50/60Hz) 0-10V dimming drivers mounted to junction box, 10% or 1% minimum dimming level available.

LUMEN MAINTENANCE — 70% lumen maintenance at 60,000 hours; L70/60,000 hours.

LISTINGS — Certified in US and Canadian safety standards. Wet location standard (covered outlets). IP55 rated. Drivers are RoHS compliant.

GOVERNMENT PROCUREMENT — BAA — Product with the BAA option qualifies as a domestic end product under the Buy American Act as implemented in the FAR and DFARS. Product with the BAA option also qualifies as manufactured in the United States under DOT Buy America regulations.

BABA — Build America Buy America: Product with the BAA option also qualifies as produced in the United States under the definitions of the Build America, Buy America Act.

Please refer to www.acuitybrands.com/flag-america for additional information.

WARRANTY — 5-year limited warranty. This is the only warranty provided and no other statements in this specification sheet create any warranty of any kind. All other express and implied warranties are disclaimed. Complete warranty terms located at: www.acuitybrands.com/support/warranty/terms-and-conditions.

Note: Actual performance may differ as a result of end-user environment and application.

All values are design or typical values, measured under laboratory conditions at 25 °C.

Specifications subject to change without notice.

PERFORMANCE DATA

Nominal Lumens	Lumens	Wattage	Lm/W
500	5279	5.8	90.5
750	7581	8.9	85.1
1000	9501	10.4	91.0
1500	1514	17.5	86.4
2000	2096	22.5	89.1
2500	2594	28.3	86.6
3000	3021	34.8	86.9
4000	4008	44.3	90.6
5000	4975	53.7	86.3

Notes

- Tested in accordance with IESNA LM-79-08.
- Tested to current IES and NEMA standards under stabilized laboratory conditions.
- CRI: 80 typical.

Dimensions

Open Trim: 6" Open and Wallwash LED Non-IC New Construction Downlight

Wallwash Trim

DIMENSIONS

LDN6 500-3000 Lumens

See page 4 for other fixture dimensions

LITHONIA LIGHTING

LDN6

Design Select options indicated by this color background.

ORDERING INFORMATION Lead times will vary depending on options selected. Consult with your sales representative.

Example: LDN6 35/15 L06 AR LSS VMVLT E210

Series	Color Temperature	Lumens	Trim Style	Trim Color	Trim Finish	Flange Color	Voltage
LDN6 4" round	27 / 2700K	05 500 lumens	LDN6 Downlight	ELR Clear	LSS Semi-specular	ELSW White painted flange	VMVLT Multi-volt
	35 / 3500K	07 750 lumens					
	40 / 4000K	10 1000 lumens					
	50 / 5000K	15 1500 lumens					
		20 2000 lumens					
		25 2500 lumens					
		30 3000 lumens					
		40 4000 lumens					
		50 5000 lumens					

Driver	Emergency	Control Input	Options
GZ10 0-10V driver dims to 10%	(Blank) No Emergency Needed	(Blank) No Control Input Needed	HA0 High ambient option (40°C)
GZ10 0-10V driver dims to 10%	ELR Battery pack 10W constant power, non-T20 compliant, integral test switch	XT Wireless voice control with "Just One Touch" pairing	CP Chicago Phoenix
D1 Minimum dimming 10% driver for use with XT	ELR Battery pack 10W constant power, non-T20 compliant, remote test switch	NPP160 nLight* network power/play pack with 0-10V dimming for non-dimmable LEDs (GZ10, GZ11)	RRL RELC* ready luminaire connectors enable a simple and consistent factory installed option across all A+ luminaires
EZ1 Minimum dimming 1% driver for use with XT	ELSD Self-diagnostic battery pack 10W constant power, non-T20 compliant, integral test switch	NPP160ER nLight* network power/play pack with 0-10V dimming for non-dimmable LEDs (GZ10, GZ11)	Buy America/Act and/or Build America Buy America Qualified
EZ1 0-10V dimmable driver with smooth and flicker-free deep dimming performance down to 1% dim to dark	ELSD Self-diagnostic battery pack 10W constant power, non-T20 compliant, remote test switch	NPS80EZ nLight* dimming pack controls 0-10V dimmable LEDs (GZ10, GZ11)	BAA Buy America/Act and/or Build America Buy America Qualified
E24B eLED DALI SOLIDBRIE dim to dark	E10WCP Battery pack 10W constant power, T20 compliant, integral test switch	NAD nLight* Air Dimming Pack Wireless Controls. Controls features an emergency circuit, not available with battery pack options	80CRI High CRI (90+)
	E10WCPFR Battery pack 10W constant power, T20 compliant, remote test switch	NLAIR2 nLight* Air Dimming Pack Wireless Controls. Controls features an emergency circuit, not available with battery pack options	SF Single fuse
	E10WSTAR Emergency battery pack, 10W with remote test switch and lotsa STAR technology	NLAIR2 nLight* Air Dimming Pack Wireless Controls. Controls features an emergency circuit, not available with battery pack options	

Option Value Ordering Restrictions

Option value	Restriction
Lumens	Overall height varies based on lumen package; refer to dimensional chart.
WS, BR	Not available with finishes.
JAY	Not available with emergency options.
SL	Must specify voltage 120V or 277V.
10W, 10BL	Available with clear 24" reflector only.
EL, ELA, ELSD, ELSD, ELSDCP, ELSDCPFR	12.5" of plenum depth or top access required for battery pack maintenance.
NPP160, NPP160ER, NPS80EZ, NPS80ZER	Specify voltage. ER for use with generator supply EM power. Will require an emergency hot feed and normal hot feed. See UL 924 Sequence of Operation table.
NAD	Feature begins at 80% light level. Must be specified with NPS80EZ or NPS80ZER. Only available with T21 drivers.
NLAIR, NLAIR2, NLAIR2ER, NLAIR2ER2	Not available with CP, NPS80EZ, NPS80ZER, NPP160, NPP160ER or NAD options. Not recommended for metal ceiling installations.
NAD	Feature height 6.5" for all lumen packages with H65.
CP	Must specify voltage for 5000lm and above. 5000lm with marked spacing 24" x 24" x 14" H. Not available with emergency battery pack option.
XT	Must specify D10 or D1 driver. Not available with nLight options. Not available with CP. Not recommended for metal ceiling installation. Not for use with emergency backup power systems other than battery packs.
Reflex* Options	Refer to BRL specification sheet on acuitybrands.com for further details.
BRLAE	Commercial features should disconnect the TSP before unpluging the BRL, so it does not go into discharge mode.
BRLC25	BRLC25 option is to be used with the OnePass CUL, CUL, CUL, CUL, CUL and CUL for 0-20V low voltage controls applications. Not available with integral dimming sensors.
TRALTRD, FRALTRD	RALTRD for pricing only. Replace with applicable RAL number and finish when ready to order. See the RAL BROCHURE for available color options.
LCPC, LCPC	LCPC options for pricing only. Custom color chip needs to be sent to your Customer Revolution specialist before order can be processed. Click HERE for more details.
E10WSTAR	Not available with wet location. E1, E2A, D05, CP, 347V, NPS80EZ, NLAIR2ER, NLAIR2ER2, ALSD & ALSDWTRAL. OR 3000-4500 lumens w/XT. Top access installation or 12.5" plenum clearance required for roomside installation. Not available with integral test switch.

Accessories: Order as separate catalog number.

Accessories	Description
EAC DSM 375	Compact interruptible emergency AC power system
EAC DSM 125	Compact interruptible emergency AC power system
GBAG 12	Oversized wire ring with 8" outside diameter
SC46	Sloped Ceiling Adapter. Degree of slope must be specified (50, 100, 150, 200, 250, 300). Ex. SC46 100

design select

Items marked by a shaded background qualify for the Design Select program and ship in 15 days or less. To learn more about Design Select, visit www.acuitybrands.com/designselect. *See ordering tree for details.

(Maximum order quantity for design select lead times is 112.)

LITHONIA LIGHTING

DOWNLIGHTING: One Lithonia Way Conyers, GA 30012 Phone: 800-705-SERV (3786) www.lithonia.com

© 2019-2024 Acuity Brands Lighting, Inc. All rights reserved. Rev. 10/08/24