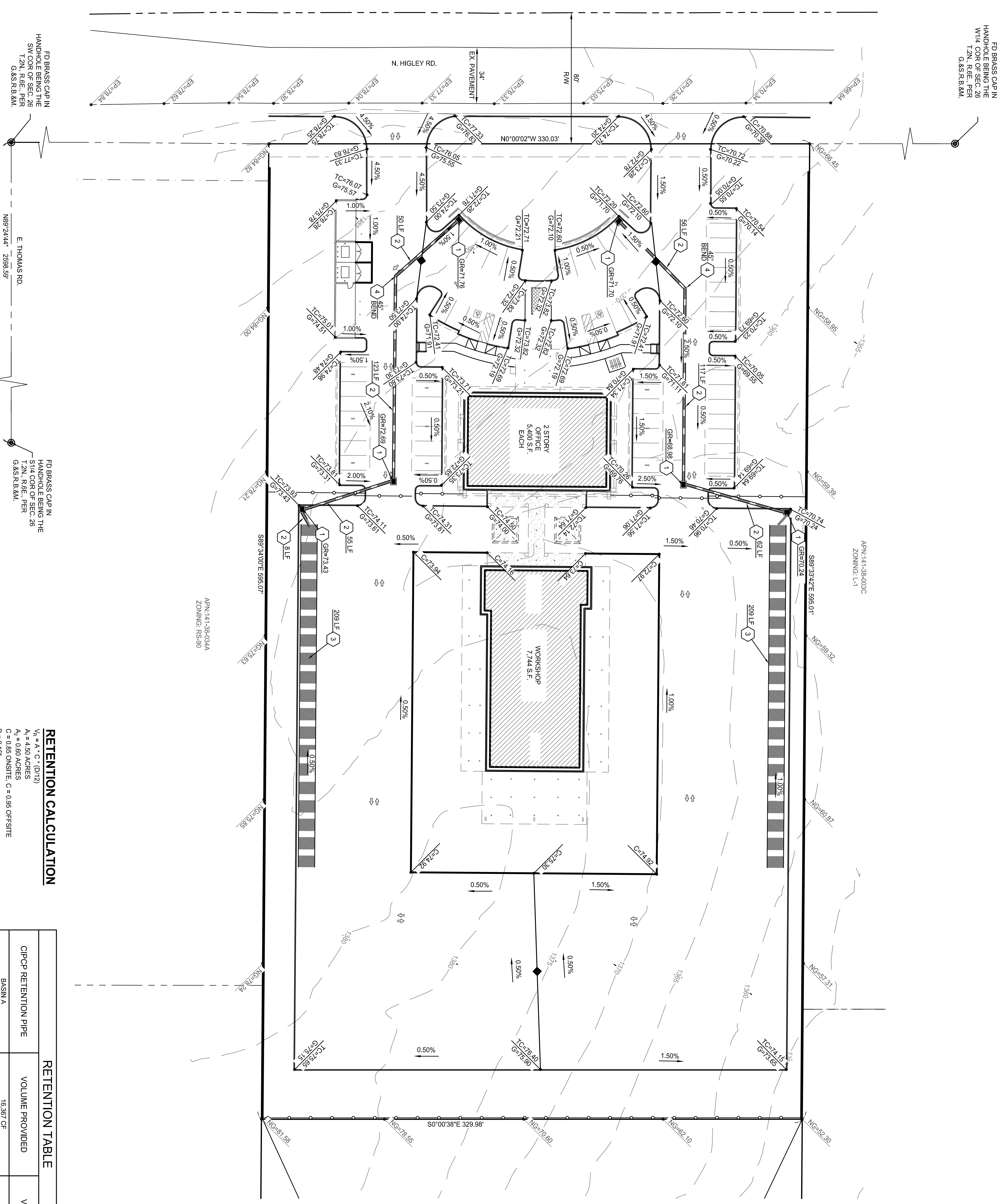


ZONING: L-1



FD BRASS CAP IN HANDHOLE BEING THE W/4 COR. OF SEC. 26 T2N, R6E, PER G&S R.B. 8.M.

FD BRASS CAP IN HANDHOLE BEING THE SW/4 COR. OF SEC. 26 T2N, R6E, PER G&S R.B. 8.M.

E. THOMAS RD. N89°24'44" - 2989.69'

FD BRASS CAP IN HANDHOLE BEING THE SW/4 COR. OF SEC. 26 T2N, R6E, PER G&S R.B. 8.M.

APN:141-38-003C ZONING: L-1

APN:141-38-034A ZONING: RS-90

**RETENTION CALCULATION**

$V_R = A \cdot C \cdot (D/12)$   
 $A_1 = 4.50$  ACRES  
 $A_2 = 0.60$  ACRES  
 $C = 0.85$  ONSITE,  $C = 0.95$  OFF-SITE  
 $D = 2.15'$   
 $V_R = 4.50$  ACRES  $\cdot 0.85 \cdot (2.15/12) = 4.9360$   
 $V_R = 29.85221$  C.F.

**RETENTION TABLE**

CIPCP RETENTION PIPE	VOLUME PROVIDED	VOLUME REQUIRED
BASIN A	16,387 CF	29,882.21 C.F.
BASIN B	16,387 CF	
TOTAL	32,774 CF	

- STORM DRAIN NOTES**
1. INSTALL CATCH BASIN PER M.A.G. STD. DTL. 535, TYPE "F".
  2. INSTALL 18" HDPE STORM DRAIN PIPE, LENGTH PER PLAN.
  3. INSTALL 10" DIA. UNDERGROUND CMP RETENTION PIPE.
  4. INSTALL 18" HDPE BEND, TYPE PER PLAN.

NOT APPROVED FOR CONSTRUCTION

JOB NO. 202210070  
 PRELIMINARY GRADING PLAN  
 SHEET NO. 1  
 1 OF 1

Contact Arizona 811 at least two full working days before you begin excavation

Call 811 or click Arizona811.com

**PRELIMINARY GRADING PLAN**

PROJECT: **HIGLEY 202 COMMERCE INDUSTRIAL**

3813 N. HIGLEY ROAD, MESA, AZ 85215

REVISIONS:


**BFH Group**

3707 EAST SOUTHERN AVENUE  
 MESA, ARIZONA, 85206  
 PHONE: 480.734.1446