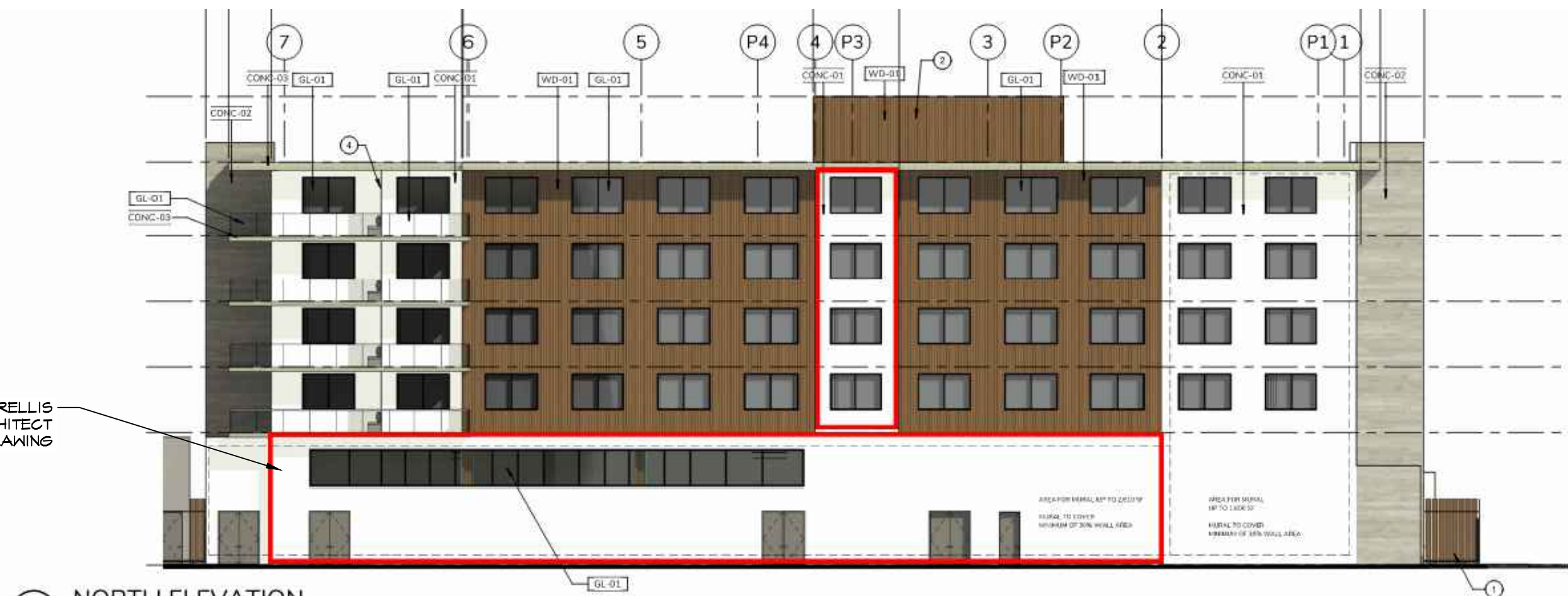


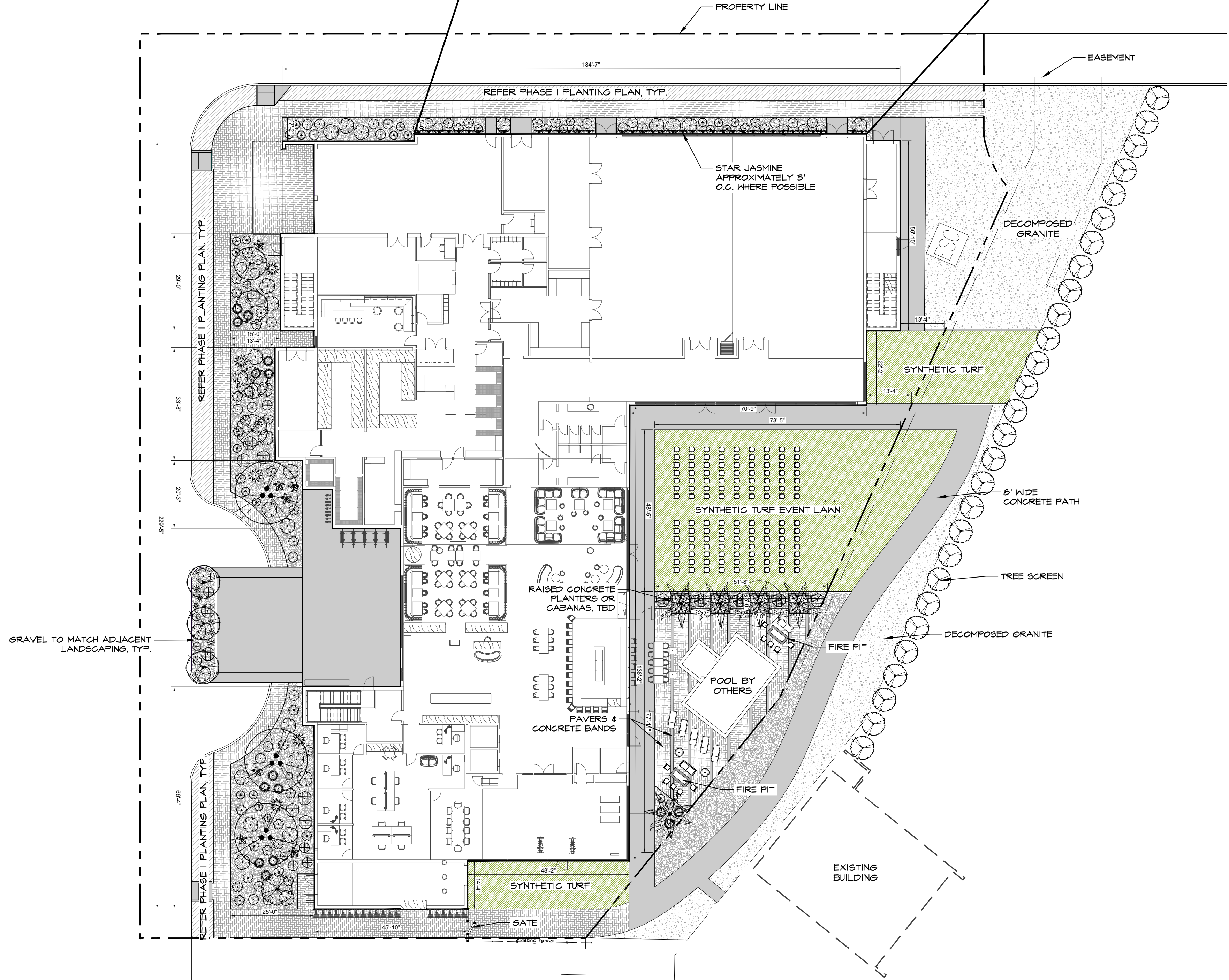
NO.	DATE	DESCRIPTION



2 NORTH ELEVATION
NTS

STAR JASMINE TO BE GROWN ON STAINLESS CABLE TRELLIS AS SHOWN IN IMAGE TO THE LEFT
SCS CABLE SOLUTIONS, LLC
800-330-4115
WWW.STAINLESSCABLESOLUTIONS.COM

AREAS FOR CABLE TRELLIS DELINEATED IN RED- REFER ARCHITECT FOR SCALE ELEVATION DRAWING



PLANT SCHEDULE

SYMBOL	BOTANICAL / COMMON NAME	CONT	QTY	SHADE SF.	SHADE SF. MULTIPLIED
	LAGERSTROEMIA INDICA / CRAPE MYRTLE	24"BOX	5	80 SF.	400 SF.
	PARKINSONIA X 'DESERT MUSEUM' / DESERT MUSEUM PALO VERDE	36" BOX	3	276 SF.	829 SF.
	PHOENIX DACTYLIFERA / RESORT STYLE DATE PALM	24" BOX	5	148 SF.	738 SF.
	PRUNUS CAROLINIANA 'COMPACTA' / COMPACT CAROLINA CHERRY	24"BOX	28	40 SF.	1,114 SF.
	VITEX AGNUS-CASTUS / CHASTE TREE	24" BOX	3	214 SF.	214 SF.
SYMBOL	BOTANICAL / COMMON NAME	SIZE	QTY	TOTAL SF.	
	AGAVE AMERICANA 'MEDIO-PICTA ALBA' / STRIPED CENTURY PLANT	5 GAL	7	3,245 SF.	
	AGAVE PARRYI TRUNCATA / ARTICHOKE PARRY'S AGAVE	5 GAL	6		
	HESPERALOE PARVIFLORA / RED YUCCA	5 GAL	5		
	LANTANA SELLOWIANA / PURPLE LANTANA	1 GAL	28		
	RHAPHIOLEPIS INDICA 'PINKIE' / INDIAN HAWTHORNE	5 GAL	14		
	ROSA ACICULARIS 'NOARE' TM / RED FLOWER CARPET ROSE	5 GAL	33		
	ECHINOCACTUS GRUSONII / GOLDEN BARREL CACTUS	5 GAL	5		
GRASSES					
	MUHLENBERGIA CAPILLARIS 'REGAL MIST' TM / MUHLY	5 GAL	15		
	MUHLENBERGIA LINDHEIMERI 'AUTUMN GLOW' / AUTUMN GLOW MUHLY	5 GAL	5		
	PENISSETUM ALOPECUROIDES 'HAMELN' / HAMELN DWARF FOUNTAIN GRASS	5 GAL	24		
VINES					
	TRACHELOSPERMUM JASMINOIDES 'STAR' / STAR JASMINE	3 GAL	37		
ANNUALS/PERENNIALS					
	DELOSPERMA NUBIGENUM / ICE PLANT	1 GAL	53		
	HEMEROCALLIS X 'STELLA DE ORO' / STELLA DE ORO DAYLILY	1 GAL	6		
	SALVIA GREGGII / AUTUMN SAGE	1 GAL	2		

ROCK MULCH TO BE A MINIMUM OF 1", AND 3" THICK, PER CITY. DEWITT PRO-5 5 OZ. WOVEN WEED BARRIER OR SIMILAR TO BE INSTALLED UNDER ALL ROCK MULCH IN PLANTER AREAS.

TABLE 11-33-2-E: VEGETATION CREDIT TABLE

TYPE OF PLANT MATERIAL	CREDIT IN SF.	TOTAL IN SF.
EVERGREEN TREE (AT LEAST 25 FT. TALL AT MATURITY)	100	800
SHADE TREE	50	150
ORNAMENTAL TREE	25	125
LARGE SHRUB (MORE THAN 8' TALL AT MATURITY)	50	-
MEDIUM SHRUB (4-8' TALL AT MATURITY)	25	475
SMALL SHRUB (LESS THAN 4' TALL AT MATURITY)	10	200
COLUMNAR DECIDUOUS OR EVERGREEN TREE	25	-
COLUMNAR EVERGREEN SHRUB (LESS THAN 8' TALL AT MATURITY)	10	-
EVERGREEN GROUND COVER	25	1,675
PERENNIAL PLANT AND GROUND COVER, BULB/TUBER AND ORNAMENTAL GRASS	5	355
1. DWARF TREES OR TREE VARIETIES WITH A MATURE WIDTH OF LESS THAN 10'	25	-
2. LARGE ORNAMENTAL GRASS, OVER 4' TALL AT MATURITY	10	50

