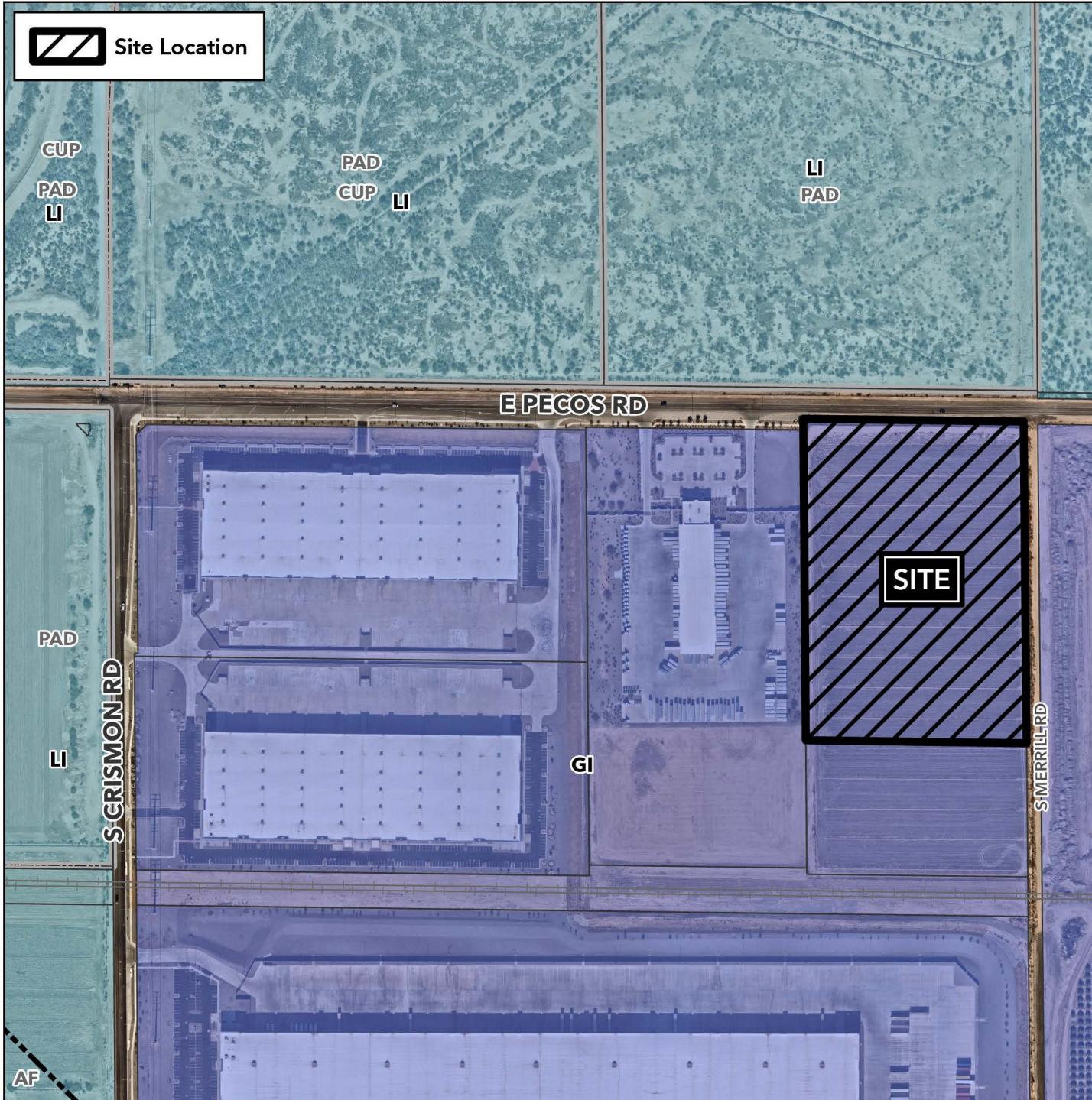


Planning and Zoning Vicinity Map: ZON24-00548

Case Details

 Site Location



Case:

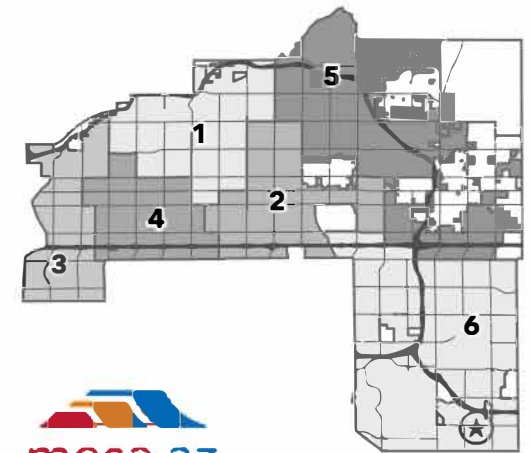
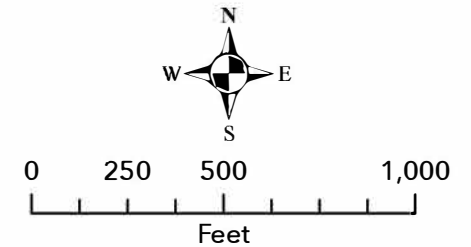
ZON24-00548

Site / Address:

(District 6). 13± acres located approximately 2,600 feet west of the southwest corner of East Pecos Road and South Signal Butte Road.

Request:

Site Plan Review for the development of an approximately 49,747± square foot freight/truck terminal and warehouse.




mesa·az