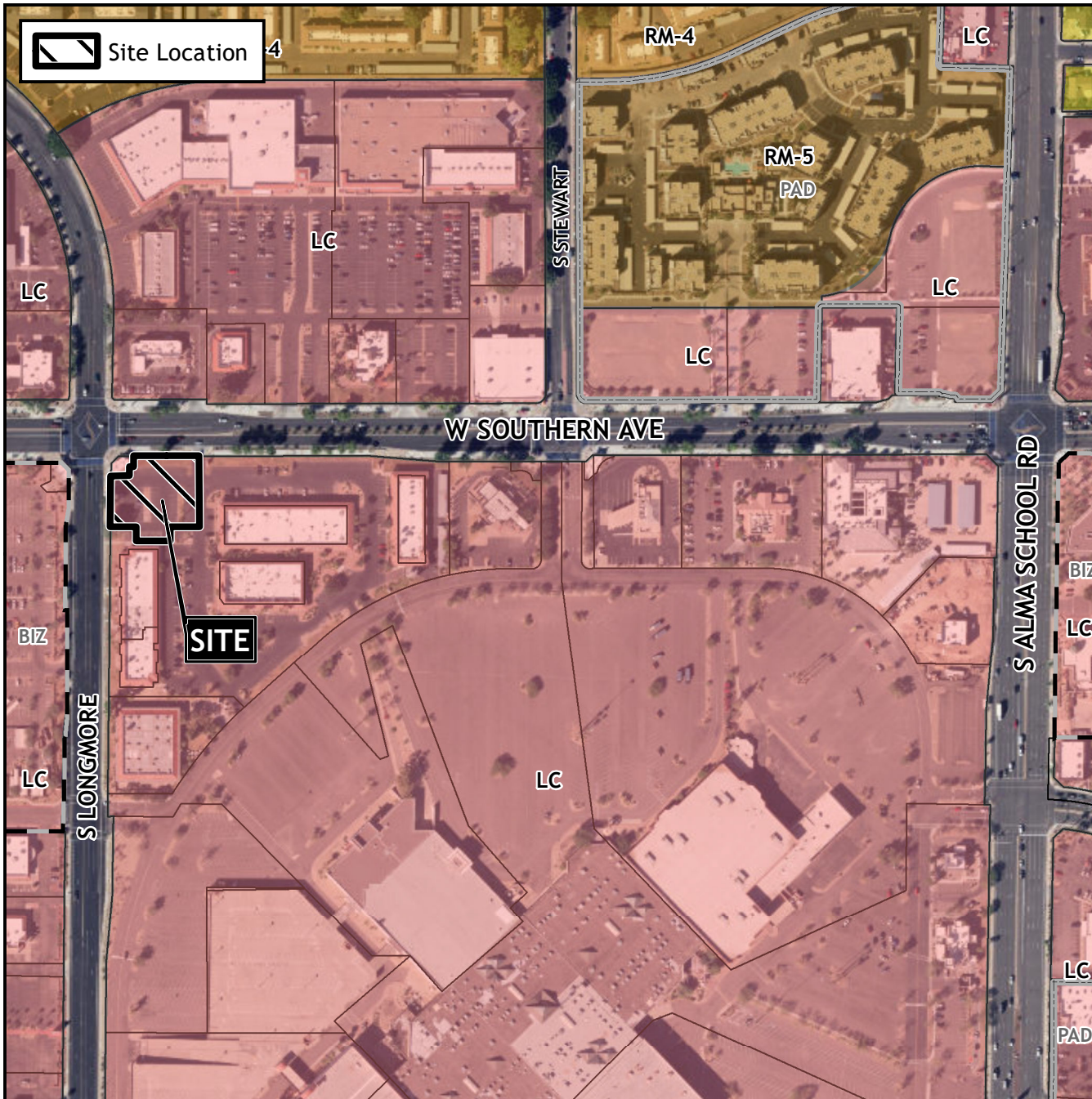


# Planning and Zoning Vicinity Map: ZON23-00221



## Case Details

CASE:

PRE-PLAT :

ZON23-00221

### SITE / ADDRESS:

(District 3). Within the 1200 block of South Longmore (east side) and within the 1400 block of West Southern Avenue (south side). Located west of Alma School Road on the south side of Southern Avenue. (1± acre).

### REQUEST:

Site Plan Review. This request will allow for a medical office development.

