

EXTERIOR BUILDING MATERIALS							
TOTAL MATERIAL AREA (NORTH ONLY)				= 2,071 SF			
TOTAL MATERIAL AREA (EAST ONLY)				= 2,914 SF			
TOTAL MATERIAL AREA (SOUTH ONLY)				= 2,071 SF			
TOTAL MATERIAL AREA (WEST ONLY)				= 2,914 SF			
TOTAL MATERIAL AREA (ALL 4 ELEVATIONS) = 9,970 SF							
	MATERIAL / ITEM	MANUFACTURER	PRODUCT / COLOR	NORTH ELEV. AREA SF (%)	EAST ELEV. AREA SF (%)	SOUTH ELEV. AREA SF (%)	WEST ELEV. AREA SF (%)
001	FIELD BRICK	INTERSTATE BRICK	PEWTER L-4	988 SF (47%)	913 SF (31%)	1,073 SF (51%)	1,010 SF (35%)
002	ACCENT BRICK	INTERSTATE BRICK	PLATINUM	42 SF (2%)	82 SF (3%)	40 SF (1%)	81 SF (2%)
003	WAINSCOT & STEEPLE BRICK	GENERAL SHALE	THUNDERCLOUD	438 SF (21%)	853 SF (29%)	295 SF (14%)	849 SF (29%)
004	CONCRETE ROOF TILE	EAGLE ROOFING	5699 GRAY	-	-	-	-
005	EIFS REVEAL PANEL	PAINT - DUNN EDWARDS	STEVEARENO BEIGE DEC766 (FLAT)	133 SF (6%)	N/A	37 SF (1%)	N/A
006	PRECAST CONCRETE	-	NATURAL GREY	46 SF (2%)	79 SF (3%)	47 SF (2%)	73 SF (2%)
007	STEEPLE METAL	-	PREFINISHED BONE WHITE	153 SF (7%)	153 SF (5%)	153 SF (7%)	153 SF (5%)
008	METAL FASCIA & RAKE	-	PREFINISHED BONE WHITE	-	-	-	-
009	STOREFRONT DRS./FRAME/GLAZG.	-	WHITE	23 SF (1%)	242 SF (8%)	97 SF (4%)	196 SF (7%)
010	METAL LOUVERS	-	TO MATCH ADJACENT BRICK COLOR	-	-	-	-
011	VINYL WINDOWS / GLAZING	-	WHITE / OBSCURE	50 SF (2%)	138 SF (5%)	50 SF (2%)	166 SF (5%)
012	HOLLOW METAL DOOR / FRAME	-	WHITE	-	-	-	-
013	CHURCH SIGNS	-	BARRE GRAY GRANITE	-	-	-	-



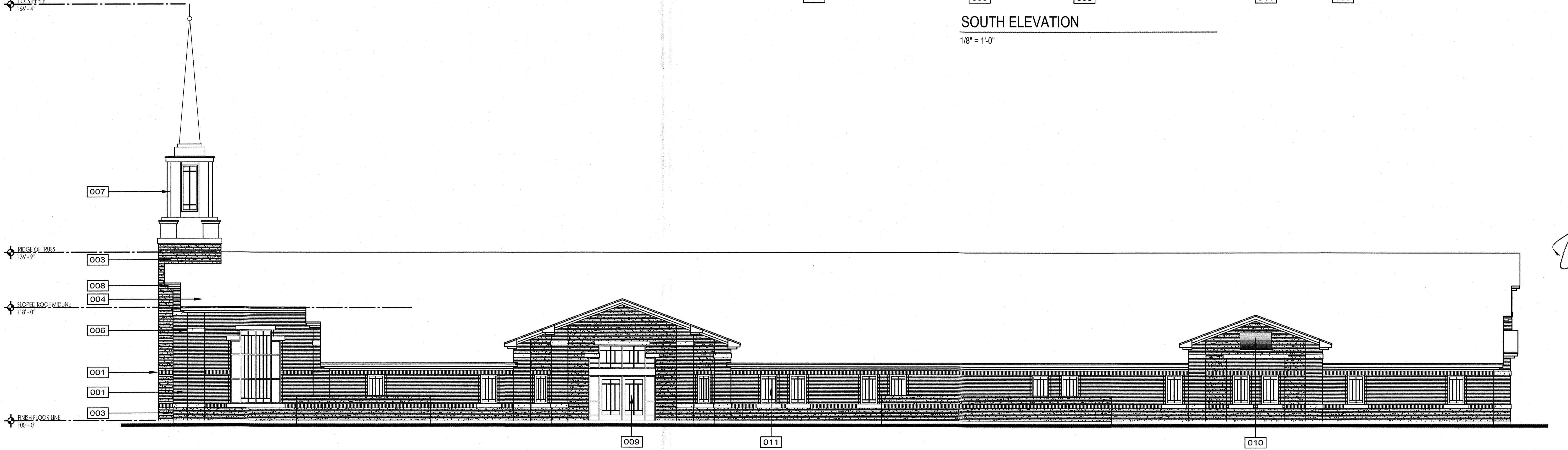
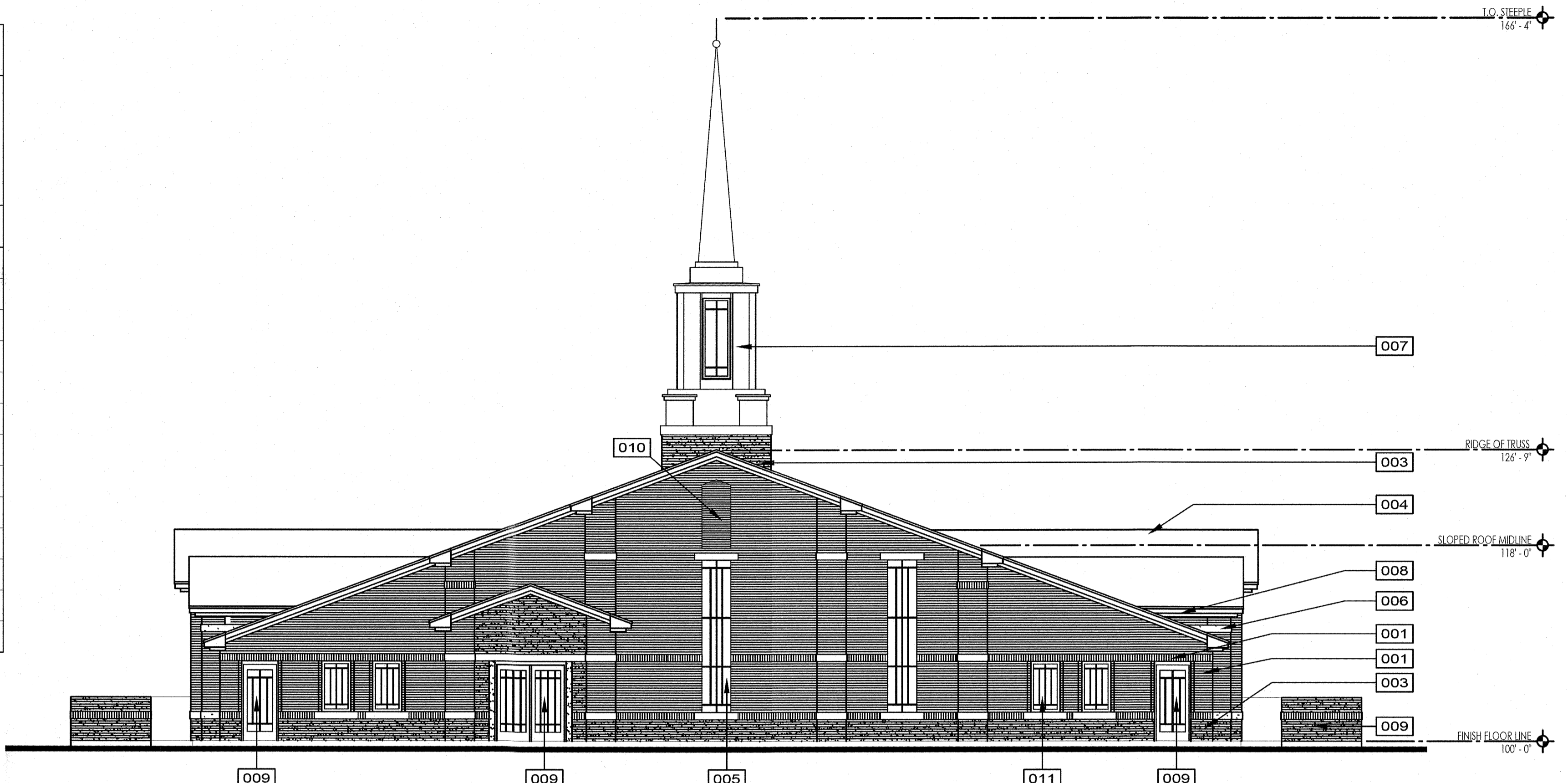
Project Number  
2023-29

EXTERIOR ELEVATIONS

32 31 30 29 28 27 26 25 24 23 22 21 20 19 18 17 16 15 14 13 12 11 10 9 8 7 6 5 4 3 2 1

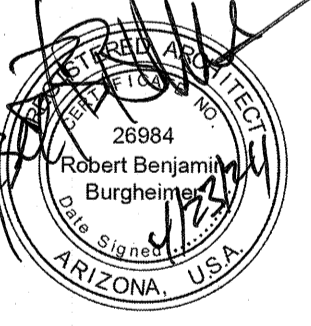
A  
B  
C  
D  
E  
F  
G  
H  
I  
J  
K  
L  
M  
N  
O  
P  
Q  
R  
S  
T  
U  
V  
W  
X

EXTERIOR BUILDING MATERIALS							
TOTAL MATERIAL AREA (NORTH ONLY)				= 2,071 SF			
TOTAL MATERIAL AREA (EAST ONLY)				= 2,914 SF			
TOTAL MATERIAL AREA (SOUTH ONLY)				= 2,071 SF			
TOTAL MATERIAL AREA (WEST ONLY)				= 2,914 SF			
TOTAL MATERIAL AREA (ALL 4 ELEVATIONS)				= 9,970 SF			
	MATERIAL / ITEM	MANUFACTURER	PRODUCT / COLOR	NORTH ELEV. AREA SF (%)	EAST ELEV. AREA SF (%)	SOUTH ELEV. AREA SF (%)	WEST ELEV. AREA SF (%)
001	FIELD BRICK	INTERSTATE BRICK	PEWTER L-4	988 SF (47%)	913 SF (31%)	1,073 SF (51%)	1,010 SF (35%)
002	ACCENT BRICK	INTERSTATE BRICK	PLATINUM	42 SF (2%)	82 SF (3%)	40 SF (1%)	81 SF (2%)
003	WAINSCOT & STEEPLE BRICK	GENERAL SHALE	THUNDERCLOUD	438 SF (21%)	853 SF (29%)	295 SF (14%)	849 SF (29%)
004	CONCRETE ROOF TILE	EAGLE ROOFING	5699 GRAY	-	-	-	-
005	EIFS REVEAL PANEL	PAINT - DUNN EDWARDS	STEVEARENO BEIGE DEC766 (FLAT)	133 SF (6%)	N/A	37 SF (1%)	N/A
006	PRECAST CONCRETE	-	NATURAL GREY	46 SF (2%)	79 SF (3%)	47 SF (2%)	73 SF (2%)
007	STEEPLE METAL	-	PREFINISHED BONE WHITE	153 SF (7%)	153 SF (5%)	153 SF (7%)	153 SF (5%)
008	METAL FASCIA & RAKE	-	PREFINISHED BONE WHITE	-	-	-	-
009	STOREFRONT DRS./FRAME/GLAZ'G.	-	WHITE	23 SF (1%)	242 SF (8%)	97 SF (4%)	196 SF (7%)
010	METAL LOUVERS	-	TO MATCH ADJACENT BRICK COLOR	-	-	-	-
011	VINYL WINDOWS / GLAZING	-	WHITE / OBSCURE	50 SF (2%)	138 SF (5%)	50 SF (2%)	166 SF (5%)
012	HOLLOW METAL DOOR / FRAME	-	WHITE	-	-	-	-
013	CHURCH SIGNS	-	BARRE GRAY GRANITE	-	-	-	-



**Sketch**  
Architecture Company  
204 East Southern Avenue, Mesa, Arizona 85205, ph 480.986.8015, fax 480.986.8032

**MESA ARIZONA EASTMARK GRANGER 250-4SC**  
THE CHURCH OF JESUS CHRIST OF LATTER-DAY SAINTS  
MESA AZ EASTMARK STAKE  
OWNER'S PROPERTY NO. 5014427201010  
10621 E. WILLIAMSFIELD RD., MESA, AZ 85212



Project Number  
2023-29

EXTERIOR  
ELEVATIONS

**A202**

32 31 30 29 28 27 26 25 24 23 22 21 20 19 18 17 16 15 14 13 12 11 10 9 8 7 6 5 4 3 2 1