

EXHIBIT "A"
LEGAL DESCRIPTION

PUBLIC UTILITIES EASEMENT ABANDONMENT

A PORTION OF THE PUBLIC UTILITIES EASEMENT RECORDED IN DOC. NO. 2003-1554823 AND DOC. NO. 88-613198, RECORDS OF MARICOPA COUNTY, ARIZONA LOCATED IN THE SOUTHWEST QUARTER OF SECTION 35, TOWNSHIP 1 NORTH, RANGE 5 EAST OF THE GILA AND SALT RIVER MEDIAN, MARICOPA COUNTY, ARIZONA, MORE PARTICULARLY DESCRIBED AS FOLLOWS:

COMMENCING AT THE SOUTHWEST CORNER OF SAID SECTION 35 FROM WHICH THE WEST QUARTER CORNER OF SAID SECTION 35 BEARS NORTH 00°00'39" WEST, A DISTANCE OF 2638.32 FEET;

THENCE ALONG THE WEST LINE OF THE SOUTHWEST QUARTER OF SAID SECTION 35, NORTH 00°00'39" WEST, A DISTANCE OF 1681.01 FEET;

THENCE LEAVING SAID WEST LINE, SOUTH 86°17'15" EAST, A DISTANCE OF 302.05 FEET TO THE BEGINNING OF A CURVE CONCAVE NORTHERLY, HAVING A RADIUS OF 1000.00 FEET;

THENCE ALONG THE ARC OF SAID CURVE, TO THE LEFT, THROUGH A CENTRAL ANGLE OF 08°04'09", AN ARC LENGTH OF 140.83 FEET;

THENCE NORTH 00°14'45" WEST, A DISTANCE OF 56.66 FEET TO THE POINT OF BEGINNING;

THENCE NORTH 00°14'45" WEST, A DISTANCE OF 239.30 FEET;

THENCE SOUTH 89°45'15" WEST, A DISTANCE OF 126.22 FEET;

THENCE NORTH 00°14'45" WEST, A DISTANCE OF 113.75 FEET;

THENCE SOUTH 89°45'15" WEST, A DISTANCE OF 201.85 FEET;

THENCE NORTH 07°37'01" EAST, A DISTANCE OF 248.44 FEET;

THENCE NORTH 81°15'42" EAST, A DISTANCE OF 450.39 FEET;

THENCE NORTH 00°14'45" WEST, A DISTANCE OF 8.04 FEET;

THENCE SOUTH 89°59'11" EAST, A DISTANCE OF 193.28 FEET;

THENCE SOUTH 00°33'58" EAST, A DISTANCE OF 20.00 FEET;

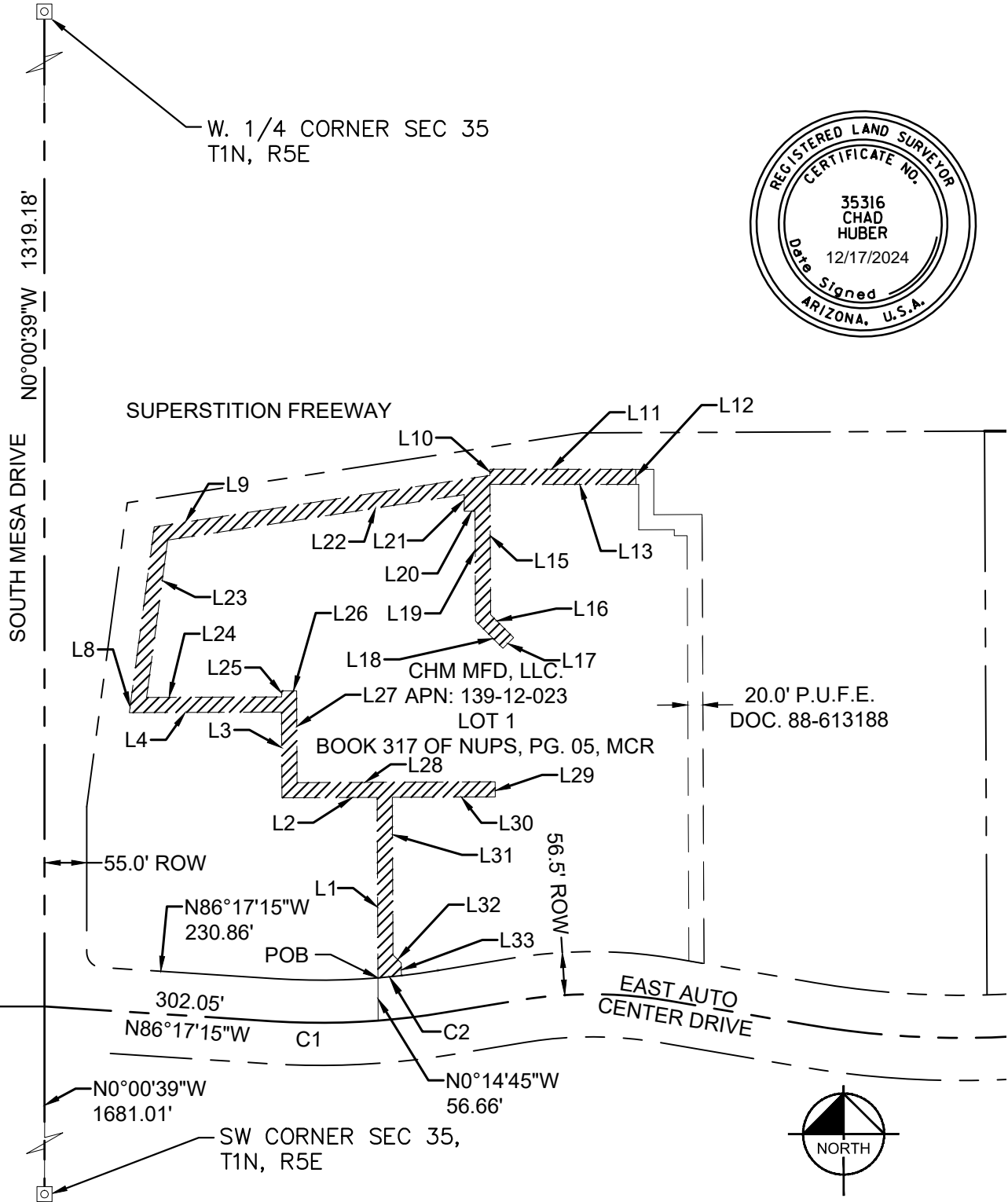
THENCE NORTH 89°59'11" WEST, A DISTANCE OF 193.39 FEET;

THENCE SOUTH 00°14'46" EAST, A DISTANCE OF 172.94 FEET;

THENCE SOUTH 45°14'45" EAST, A DISTANCE OF 42.95 FEET;
THENCE SOUTH 44°45'15" WEST, A DISTANCE OF 20.00 FEET;
THENCE NORTH 45°14'45" WEST, A DISTANCE OF 51.24 FEET;
THENCE NORTH 00°14'45" WEST, A DISTANCE OF 145.73 FEET;
THENCE NORTH 90°00'00" WEST, A DISTANCE OF 14.41 FEET;
THENCE NORTH 00°00'00" EAST, A DISTANCE OF 22.05 FEET;
THENCE SOUTH 81°15'42" WEST, A DISTANCE OF 397.72 FEET;
THENCE SOUTH 07°37'01" WEST, A DISTANCE OF 210.51 FEET;
THENCE NORTH 89°45'15" EAST, A DISTANCE OF 178.90 FEET;
THENCE NORTH 00°14'45" WEST, A DISTANCE OF 8.00 FEET;
THENCE NORTH 89°45'15" EAST, A DISTANCE OF 20.00 FEET;
THENCE SOUTH 00°14'45" EAST, A DISTANCE OF 121.75 FEET;
THENCE NORTH 89°45'15" EAST, A DISTANCE OF 262.72 FEET;
THENCE SOUTH 00°14'45" EAST, A DISTANCE OF 20.00 FEET;
THENCE SOUTH 89°45'15" WEST, A DISTANCE OF 136.51 FEET;
THENCE SOUTH 00°14'45" EAST, A DISTANCE OF 208.88 FEET;
THENCE SOUTH 45°14'45" EAST, A DISTANCE OF 15.56 FEET;
THENCE SOUTH 00°14'45" EAST, A DISTANCE OF 16.54 FEET TO THE
BEGINNING OF A CURVE CONCAVE NORTHERLY WHOSE RADIUS BEARS
NORTH 06°30'27" WEST, A DISTANCE OF 943.50 FEET;
THENCE ALONG THE ARC OF SAID CURVE, THROUGH A CENTRAL ANGLE OF
1°53'22", AN ARC LENGTH OF 31.11 FEET TO THE POINT OF BEGINNING.
SAID PARCEL CONTAINS 38,814 SQ. FEET, MORE OR LESS.



EXHIBIT A



CHAD W. HUBER
 RLS 35316
 1661 E. CAMELBACK ROAD, SUITE 400
 PHOENIX, ARIZONA 85016
 PH. 602-837-5511
 chad.huber@kimley-horn.com

LEGEND
 P.O.B. - POINT OF BEARING
 P.U.F.E. - PUBLIC UTILITY FACILITIES EASEMENT
 R.O.W. - RIGHT OF WAY

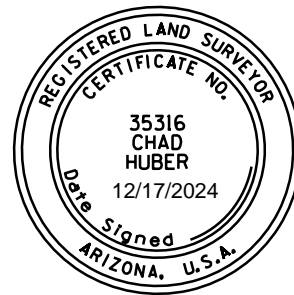
Kimley»»Horn
 1661 E. Camelback Road, Suite 400
 PHOENIX, AZ 85016
 Tel. No. (602) 837-5511

Scale	Drawn by	Checked by	Date	Project No.	Sheet No.
1"=200'	BAT	CWH	06/10/2024	291798002	1 OF 2

EXHIBIT A

CURVE TABLE					
NO.	DELTA	RADIUS	LENGTH	CHORD BEARING	CHORD
C1	8°04'09"	1000.00'	140.83'	S89°40'41"W	140.72'
C2	1°53'22"	943.50'	31.11'	N84°26'14"E	31.11'

LINE TABLE			LINE TABLE			LINE TABLE			LINE TABLE		
NO.	BEARING	LENGTH	NO.	BEARING	LENGTH	NO.	BEARING	LENGTH	NO.	BEARING	LENGTH
L1	N00°14'45"W	239.30'	L12	S00°33'58"E	20.00'	L21	S00°00'00"E	22.05'	L29	S00°14'45"E	20.00'
L2	S89°45'15"W	126.22'	L13	S89°59'11"E	193.39'	L22	S81°15'42"W	397.72'	L30	S89°45'15"W	136.51'
L3	N00°14'45"W	113.75'	L15	S00°14'44"E	172.94'	L23	S07°37'01"W	210.51'	L31	S00°14'45"E	208.88'
L4	S89°45'15"W	201.85'	L16	S45°14'45"E	42.95'	L24	N89°45'15"E	178.90'	L32	S45°14'45"E	15.56'
L8	N07°37'01"E	248.44'	L17	S44°45'15"W	20.00'	L25	N00°14'45"W	8.00'	L33	S00°14'45"E	16.54'
L9	N81°15'42"E	450.39'	L18	N45°14'45"W	51.24'	L26	N89°45'15"E	20.00'			
L10	S00°14'45"E	8.04'	L19	N00°14'45"W	145.73'	L27	S00°14'45"E	121.75'			
L11	N89°59'11"W	193.28'	L20	N90°00'00"E	14.41'	L28	N89°45'15"E	262.72'			



CHAD W. HUBER
 RLS 35316
 1661 E. CAMELBACK ROAD, SUITE 400
 PHOENIX, ARIZONA 85016
 PH. 602-837-5511
 chad.huber@kimley-horn.com

<h2 style="margin: 0;">Kimley»»Horn</h2>					
1661 E. Camelback Road, Suite 400 PHOENIX, AZ 85016			Tel. No. (602) 837-5511		
Scale	Drawn by	Checked by	Date	Project No.	Sheet No.
1"=200'	BAT	CWH	06/10/2024	291798002	2 OF 2