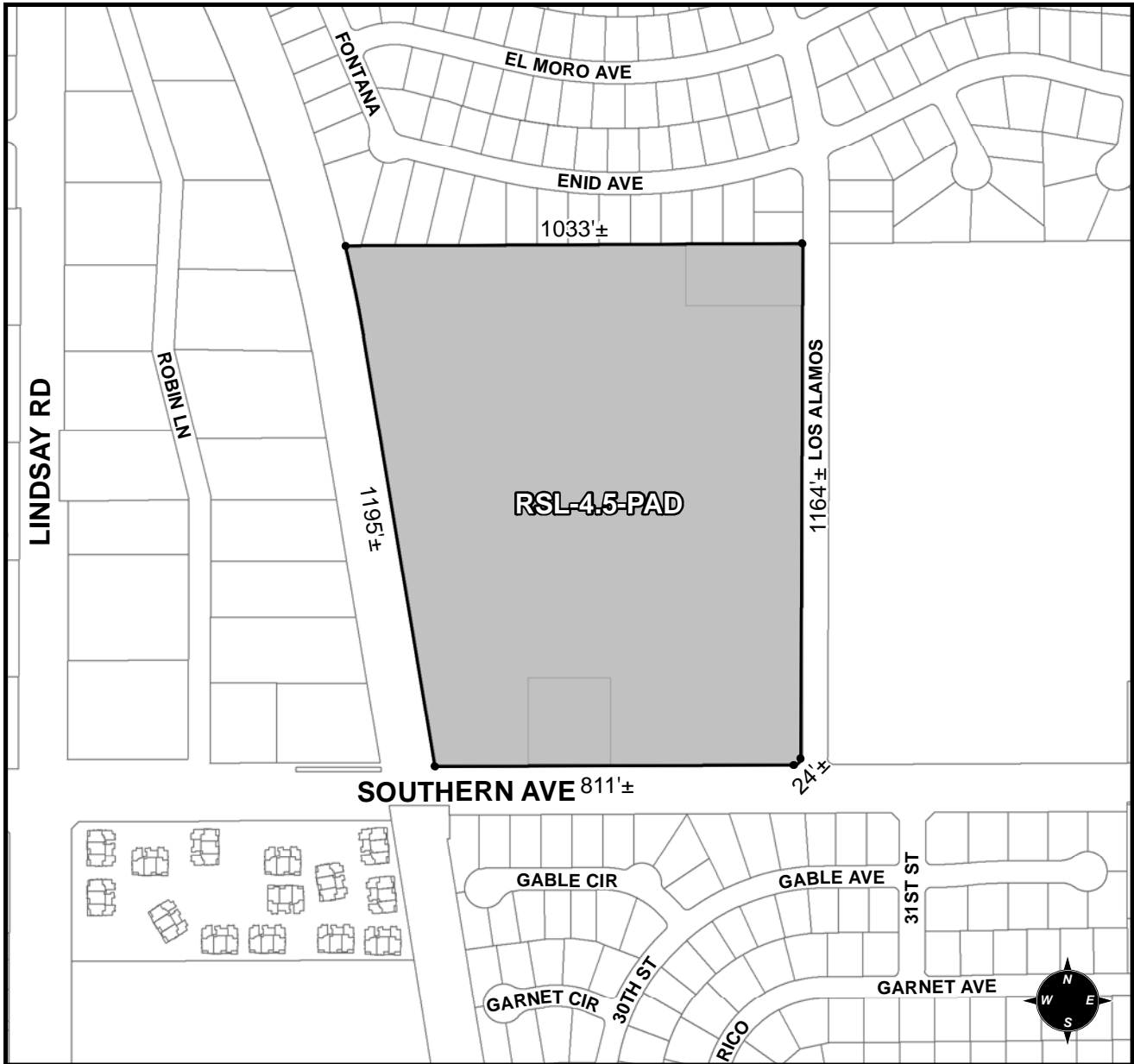




# OFFICIAL SUPPLEMENTARY ZONING MAP AMENDING THE CITY OF MESA ZONING MAP



CASE: Z17-036  
 ACREAGE: 27.0±  
 REQUEST: REZONE FROM AG TO RSL-4.5-PAD

ORDINANCE: \_\_\_\_\_

Please be advised that the attached zoning changes were approved by the Mesa City Council on \_\_\_\_\_, 2017 by Ordinance # \_\_\_\_\_. If you have any questions concerning these changes, contact the City of Mesa Planning Division at 480-644-2385.

\_\_\_\_\_ ATTEST: \_\_\_\_\_ DATE: \_\_\_\_\_  
 MAYOR CITY CLERK