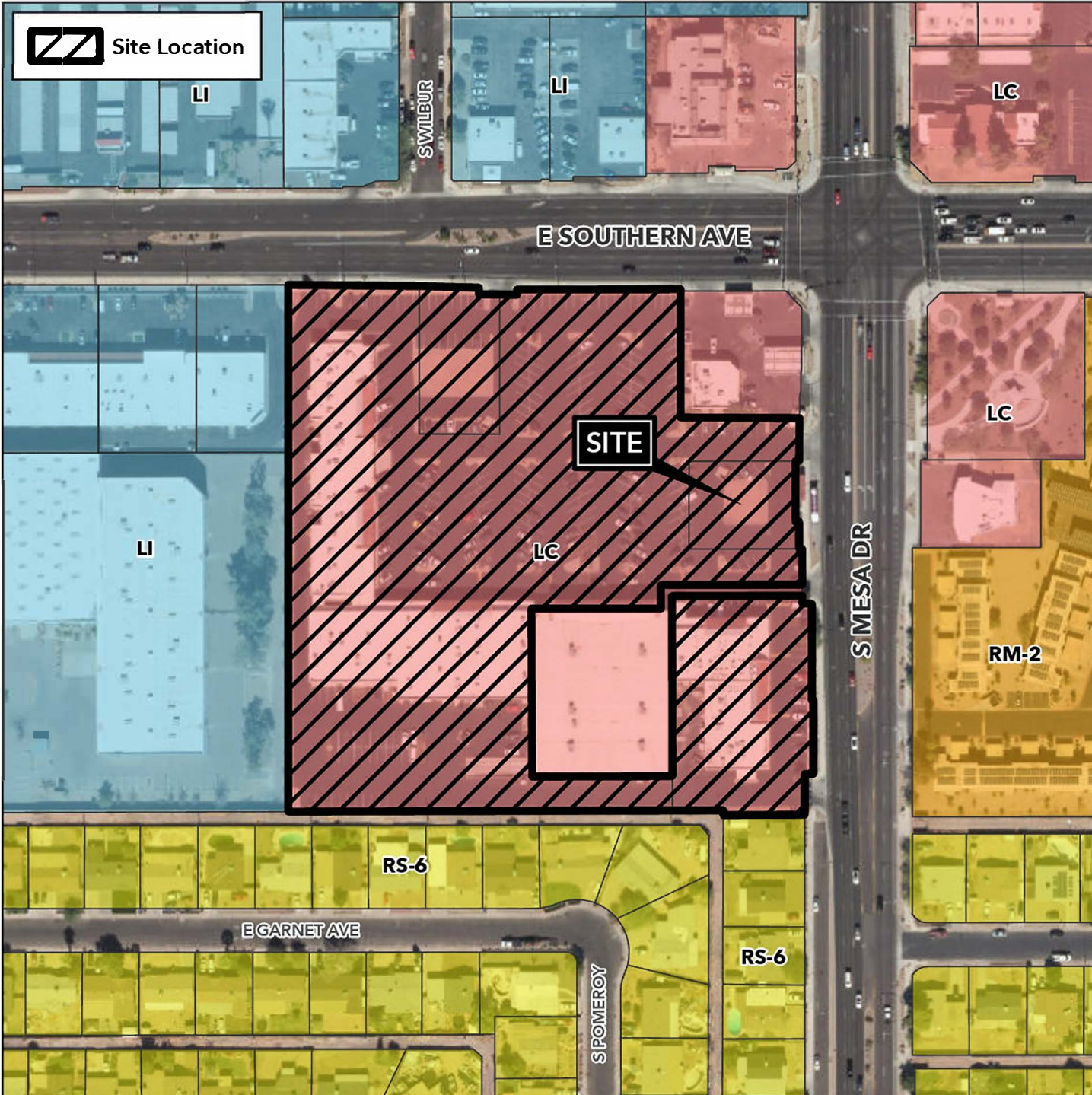


# Planning and Zoning Vicinity Map: ZON23-00935

## Case Details



### Case:

ZON23-00935

### Site / Address:

(District 4). Within the 300 block of East Southern Avenue (south side) and the 1200 block of South Mesa Drive (west side). Located west of Mesa Drive and south of Southern Avenue. (7.5± acres).

### Request:

Major site plan modification. This request will allow for a limited service restaurant with a drive-thru facility

