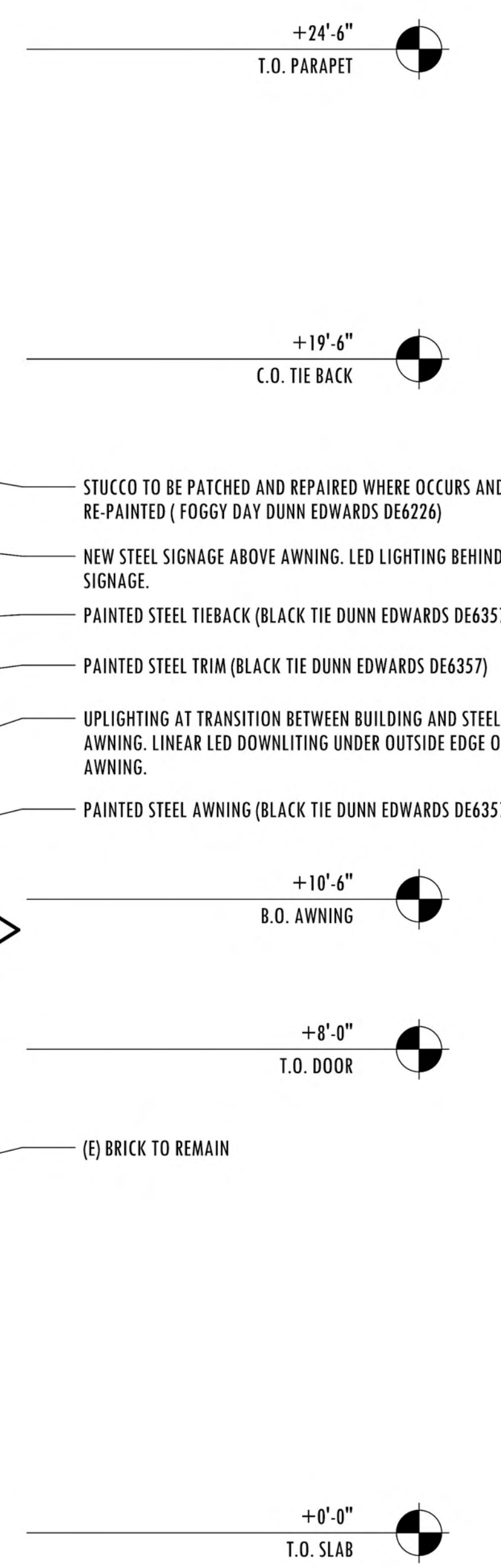




NEW STOREFRONT WITH DOUBLE DOORS IN MATTE BLACK ANOIZED FINISH AT RECESSED ENTRY  
 NEW ROMAN BRICK SILL TO MATCH EXISTING STACKED BOND PATTERN. SALVAGE AND REUSE ALL (E) BRICK  
 (E) BRICK TO REMAIN  
 REMOVE (E) PAINT. MATCH FINISH OF (E) BRICK

(E) STREET LAMPS TO REMAIN  
 NEW STOREFRONT IN MATTE BLACK ANOIZED FINISH  
 NEW ROMAN BRICK SILL TO MATCH EXISTING STACKED BOND PATTERN. SALVAGE AND REUSE ALL (E) BRICK



1 ELEVATION  
 1/2" = 1'-0"  
 0 1' 2' 5' 10'

DESIGN REVIEW BOARD  
 THESE DRAWINGS ARE AN INSTRUMENT OF SERVICE AND THE PROPERTY OF 180 DEGREES DESIGN INC. THESE DRAWINGS MAY NOT BE REPRODUCED, COPIED, OR OTHERWISE USED IN ANY MANNER WITHOUT THE EXPRESS WRITTEN PERMISSION OF 180 DEGREES DESIGN INC.

PROJECT NUMBER 23054  
 DRAWN BY XG  
 ISSUE DATE 10/28/2024

REVISIONS	R01	R02	R03	R04





DESIGN REVIEW BOARD  
 NOT FOR CONSTRUCTION  
 THESE DRAWINGS ARE AN INSTRUMENT OF SERVICE AND  
 THE PROPERTY OF 180 DEGREES DESIGN INC. THESE  
 DRAWINGS MAY NOT BE REPRODUCED, AND  
 ANY REPRODUCTION OR USE, WITHOUT  
 THE EXPRESS WRITTEN PERMISSION OF 180 DEGREES  
 DESIGN INC.

PROJECT NUMBER 23054  
 DRAWN BY XG  
 ISSUE DATE 10/28/2024

REVISIONS	R01	R02	R03	R04

