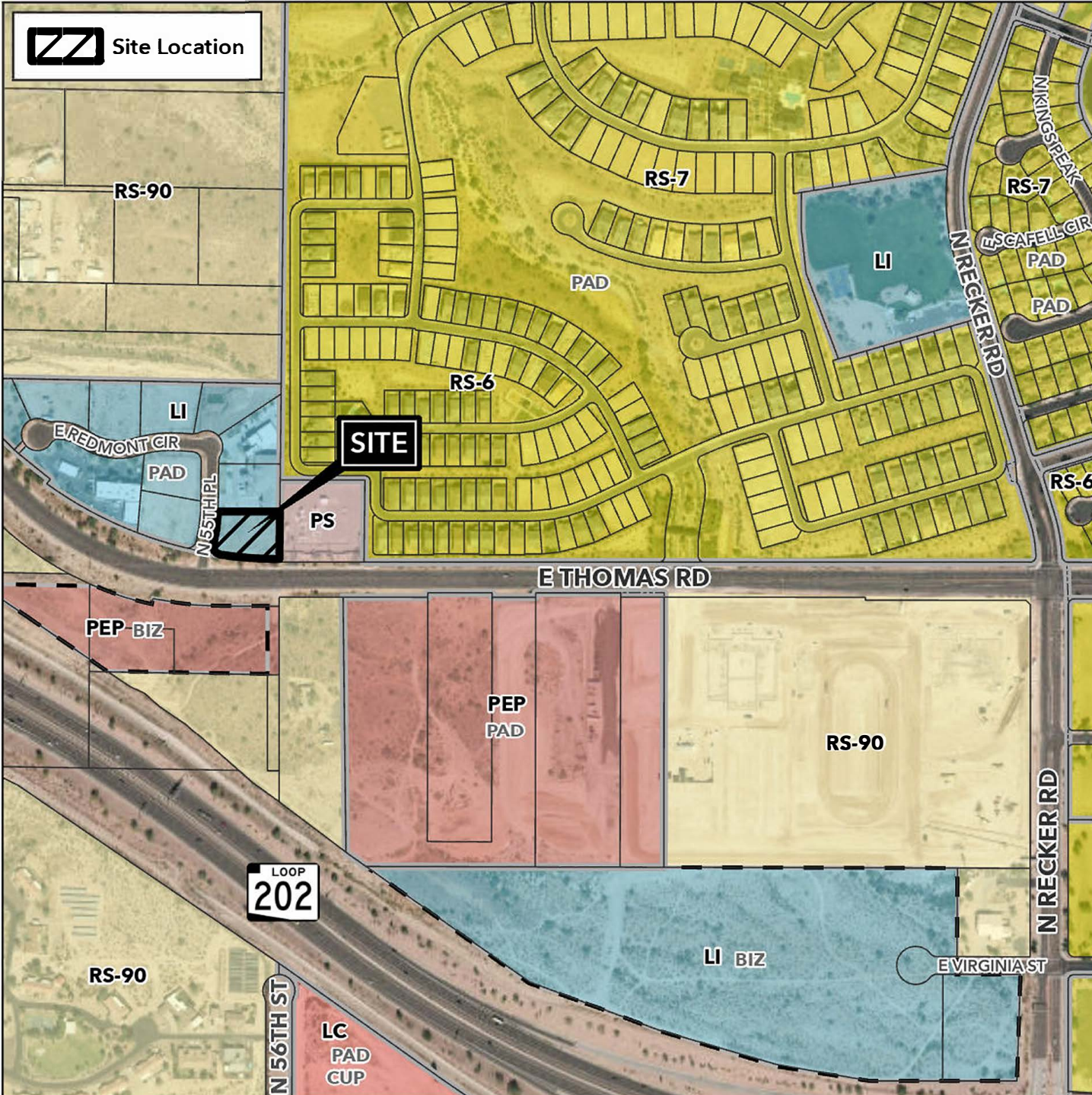


Planning and Zoning Vicinity Map: ZON24-00711

Case Details



Case:

ZON24-00711

Site / Address:

(District 5). 1± acre located at the northeast corner of East Thomas Road and North 55th Place approximately 2,600 feet west of North Recker Road.

Request:

Rezone from Light Industrial with a Planned Area Development Overlay (LI-PAD) to Light Industrial with a Planned Area Development and Bonus Intensity Zone Overlays (LI-PAD-BIZ) and Site Plan Review to allow for an industrial development.

