



Design Review Board



DRB22-00547



Request

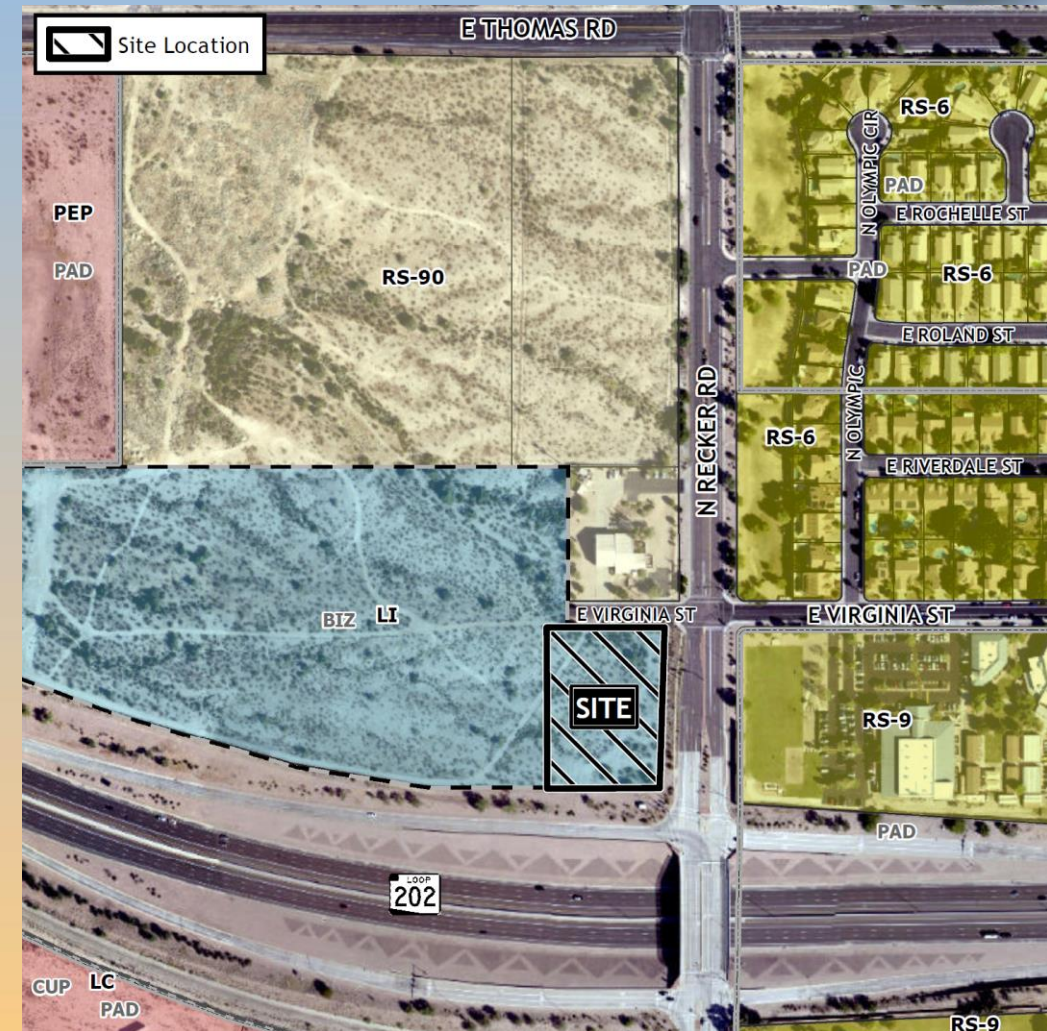
- Design Review
- To allow a commercial development





Location

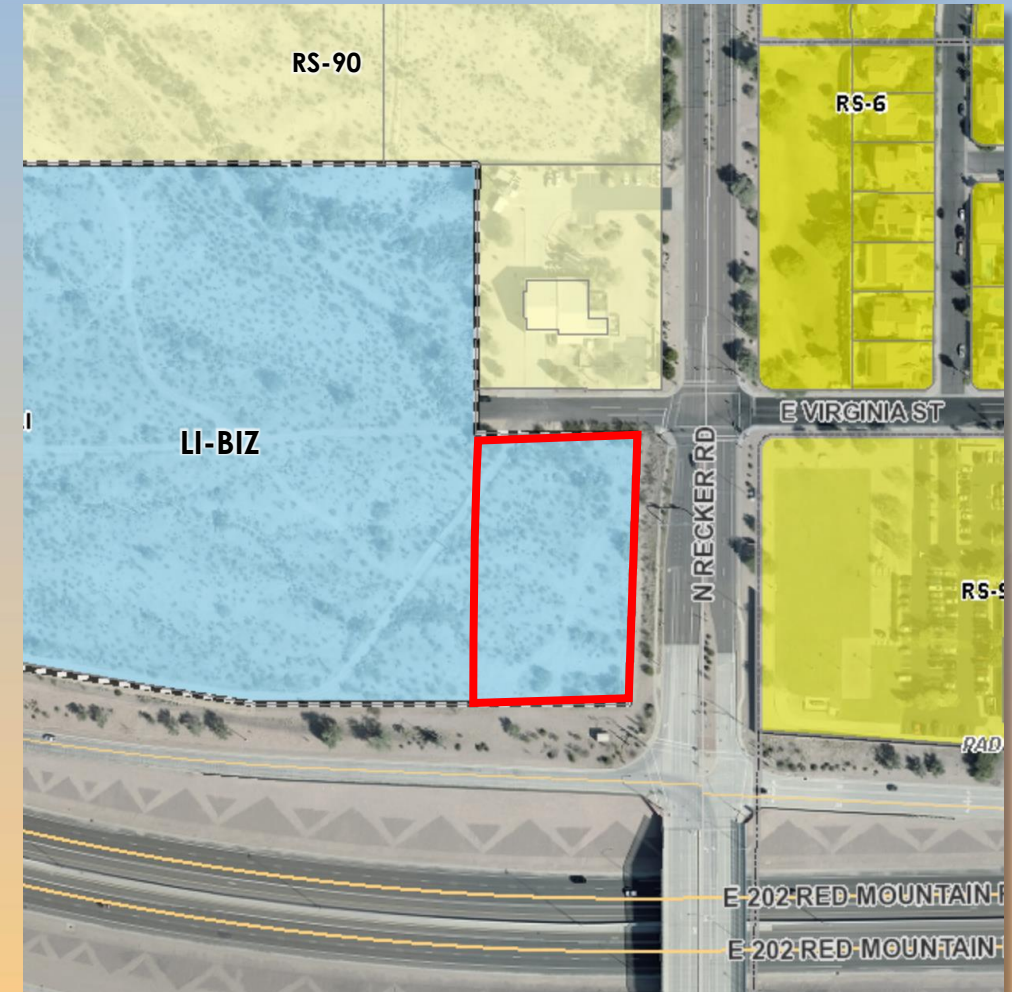
- North of the Red Mountain 202 Freeway
- South of Virginia Road
- West of Recker Road





Zoning

- Light Industrial with a Bonus Intensity Zone Overlay (LI-BIZ)
- Permitted in the LI-BIZ District





Site Photos



Looking south from Virginia Street



Site Photos

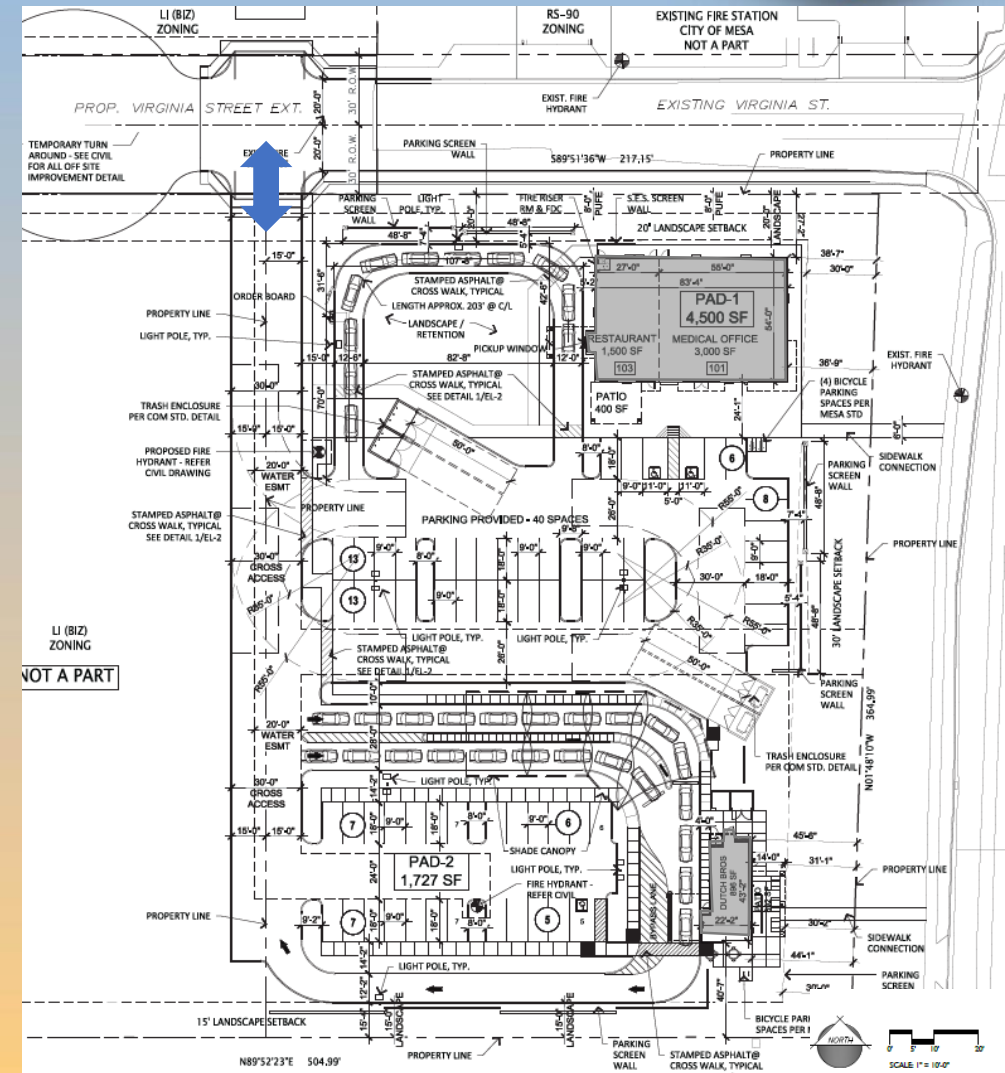


Looking west from Recker Road



Site Plan

- PAD 1 = 4,500 sq. ft. Multi-Tenant Building with drive-thru
- PAD 2 = 896 sq. ft. Limited Service Restaurant with drive-thru facilities





Landscape Plan

PLANT LEGEND

SYMBOL	SCIENTIFIC NAME	COMMON NAME	SIZE	QTY
--------	-----------------	-------------	------	-----

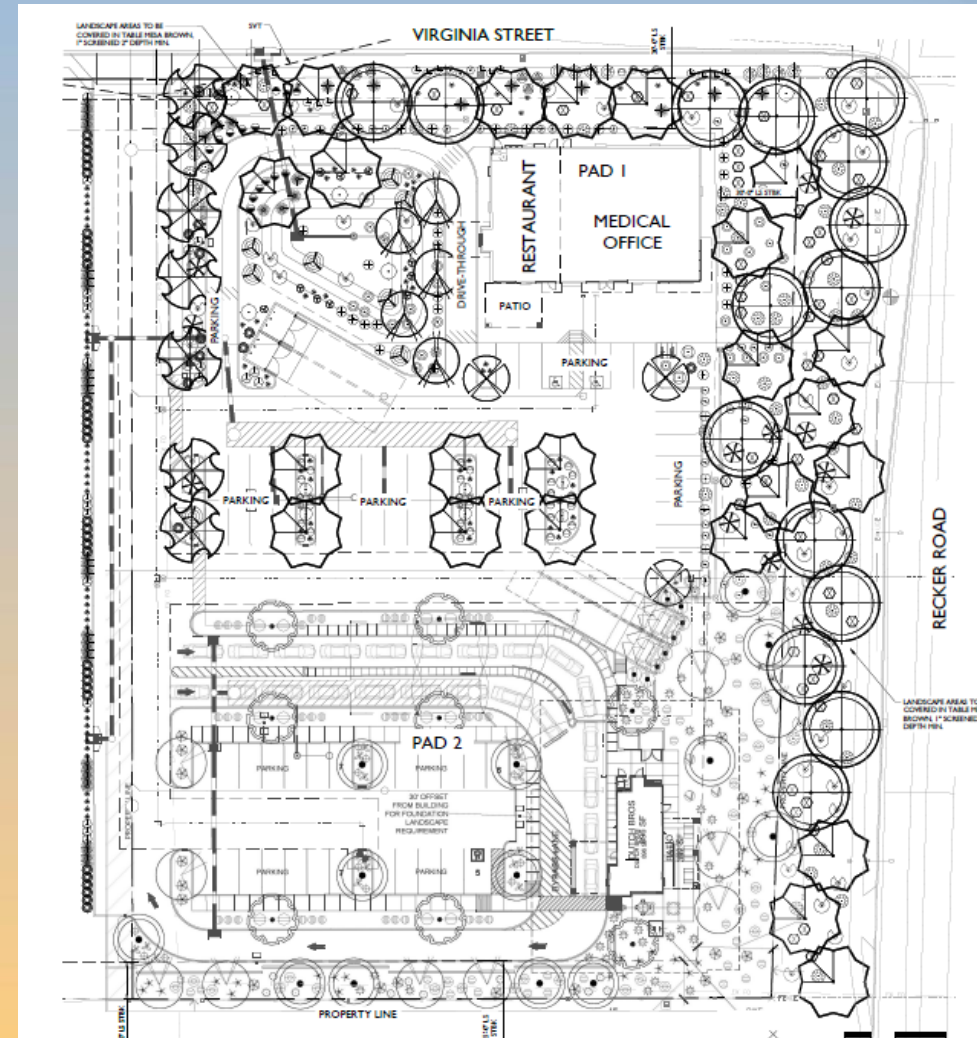
TREES				
	<i>Acacia senaria</i>	Hedge	36" Box	3
	<i>Camellia sasanqua</i>	Camellia 'Sasanqua'	36" Box	5
	<i>Citrus aurantium</i>	Citrus	36" Box	7
	<i>Ficus religiosa</i>	Thurston Fig	36" Box	24
	<i>Ulmus parvifolia</i>	Chinese Elm	36" Box	13

SHRUBS/ACCENTS				
	<i>Agave americana</i>	Century Plant	5 Gal	4
	<i>Aloe vera</i>	Blue Aloe	5 Gal	4
	<i>Bougainvillea laevis</i>	La Jolla Bougainvillea	5 Gal	29
	<i>Calliandra eriophylla</i>	Pink Fairy Duster	5 Gal	31
	<i>Grevillea robusta</i>	San Marcos Hibiscus	5 Gal	31
	<i>Hebe x exoniifolia</i>	Glenn Hebe	5 Gal	45
	<i>Hebe x exoniifolia 'Red Tipped'</i>	Red Tipped Hebe	5 Gal	38
	<i>Leucosiphon frutescens 'No Brains'</i>	No Brains Sage	5 Gal	30
	<i>Leucosiphon frutescens 'Cinnamon'</i>	Cinnamon Sage	5 Gal	9
	<i>Muhlenbergia bioretii 'Autumn Glow'</i>	'Autumn Glow' Holly	5 Gal	40
	<i>Muhlenbergia rigida</i>	Deer Grass	5 Gal	43
	<i>Muhlenbergia rigida 'Violeta'</i>	Purple Holly	5 Gal	5
	<i>Paeonia moutanensis</i>	Lady's Slipper	5 Gal	10
	<i>Paeonia moutanensis 'Whisper's Dream'</i>	Dwarf Pink Orange	5 Gal	22
	<i>Ruscus aculeatus</i>	Desert Ruscus	5 Gal	3
	<i>Rosella apiculata</i>	Coral Fountain	5 Gal	4
	<i>Senecio wrightii</i>	Feather Cocks	5 Gal	5
	<i>Scaevola taccada 'Violet'</i>	Compact Jolly	5 Gal	38
	<i>Tecoma x 'Orange Jubilee'</i>	Orange Jubilee	5 Gal	13
	<i>Tecoma x 'Gold Star'</i>	Yellow Bell	5 Gal	8
	<i>Yucca puberula</i>	Pale Leaf Yucca	5 Gal	83

GROUND COVERS				
	<i>Cordyline allamanda</i>	Bath Planting Glory	1 Gal	41
	<i>Eriophyllum lanatum 'Outback Sunset'</i>	Outback Sunset	1 Gal	12
	<i>Lantana x 'Dallas Red'</i>	Dallas Red Lantana	1 Gal	18
	<i>Lantana montealemana</i>	Trailing Purple Lantana	1 Gal	14
	<i>Lantana x 'New Gold'</i>	New Gold Lantana	1 Gal	22

MATERIALS

	Decomposed Granite	1" Screened 2" Depth, Min.	35,143 SF
--	--------------------	-------------------------------	-----------





Elevations – PAD 1

FINISH PERCENTAGES

STUCCO	-	49%
BRICK VENEER	-	15%
TILE	-	26%
GLAZING	-	10%



FINISH PERCENTAGES

STUCCO	-	39%
BRICK VENEER	-	23%
TILE	-	15%
GLAZING	-	23%



FINISH PERCENTAGES

STUCCO	-	45%
BRICK VENEER	-	35%
TILE	-	18%
GLAZING	-	2%



FINISH PERCENTAGES

STUCCO	-	48%
BRICK VENEER	-	30%
TILE	-	22%
GLAZING	-	0%



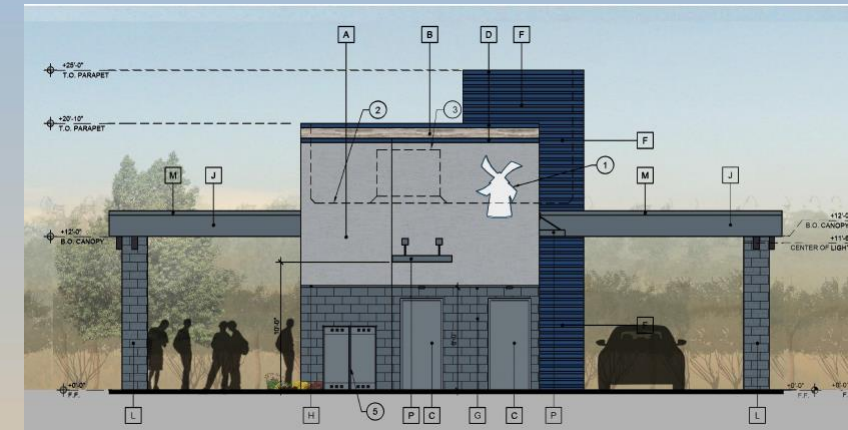


Elevations – PAD 2

East Elevation



South Elevation



STUCCO	22%
BARNWOOD	39.5%
HOLLOW METAL DOOR	2%
BLUE METAL PARAPET CAP	2%
STOREFRONT SYSTEM	6%
BLUE HORIZONTAL RIBBED METAL	7%
BLOCK VENEER	16%
DARK GRAY METAL	5.5%

West Elevation



North Elevation



STUCCO	8%
BARNWOOD	25.5%
BLUE METAL PARAPET CAP	1%
STOREFRONT SYSTEM	9%
BLUE HORIZONTAL RIBBED METAL	38.5%
BLOCK VENEER	7%
DARK GRAY METAL	11%

STUCCO	19.5%
BARNWOOD	31.5%
BLUE METAL PARAPET CAP	1.5%
STOREFRONT SYSTEM	4.5%
BLUE HORIZONTAL RIBBED METAL	23%
BLOCK VENEER	15.5%
DARK GRAY METAL	4.5%

STUCCO	41.5%
BARNWOOD	2.5%
BLUE METAL PARAPET CAP	2.5%
HOLLOW METAL DOOR	8%
BLUE HORIZONTAL RIBBED METAL	17%
BLOCK VENEER	17%
DARK GRAY METAL	11.5%



Renderings – PAD 1





Renderings – PAD 2





Colors and Materials

<p>A STUCCO - PAINT COLOR TO MATCH: FINISH: FINE SAND MFG: SHERWIN WILLIAMS COLOR: NATURAL TAN SPEC #: SW 7567</p>	<p>B STOREFRONT MULLION: MFG: KAWNEER COLOR: CLEAR ANODIZED</p>	<p>C TILE: MFG: DAL TILE COLOR: CALCATTA ARIES SPEC: PANORAMIC PORCELAIN SURFACES</p>
<p>D STUCCO - PAINT COLOR TO MATCH: FINISH: FINE SAND MFG: SHERWIN WILLIAMS COLOR: ANONYMOUS SPEC #: SW 7046</p>	<p>E THIN BRICK VENEER: FINISH: GRAIN MFG: SUMMIT BRICK COLOR: ESPRESSO</p>	<p>F THIN BRICK VENEER: FINISH: GRAIN MFG: SUMMIT BRICK COLOR: THISTLEDOWN</p>
<p>G PAINTED METAL PARAPET CAP: MFG: SHERWIN WILLIAMS COLOR: URBANE BRONZE SPEC #: SW 7048</p>	<p>H PAINTED METAL CANOPY & AWNINGS: MFG: SHERWIN WILLIAMS COLOR: RED BARN SPEC #: SW 7591</p>	<p>J PAINTED HOLLOW METAL DOORS: MFG: SHERWIN WILLIAMS COLOR: ANONYMOUS SPEC #: SW 746</p>

PAD 1
RECKER & 202 RETAIL
NWC OF RECKER ROAD AND LOOP 202
3358 N RECKER ROAD MESA AZ 85215
DATE: 08-29-2022 (PRELIMINARY)

MB-1
RKAAM 21065.00

<p>SPLIT FACE MASONRY 8x8x16 BLOCK MANUFACT: SUPERLITE COLOR: COCOA BLDG DB DARK GRAY</p>		
<p>PREFINISHED METAL FASCIA MANUFACT: TAYLOR METALS COLOR: BLDG DB DARK GRAY</p>	<p>METAL PARAPET CAP MANUFACT: TAYLOR METALS COLOR: PACIFIC BLUE</p>	
<p>SYNTHETIC STUCCO SYSTEM FINISH: SMOOTH SAND FINISH COLOR: BLDG DB LIGHT GRAY</p>	<p>METAL PANEL SIDING (HORIZONTAL) MANUFACT: TAYLOR METALS COLOR: PACIFIC BLUE</p>	<p>PORCELAIN TILE (WOOD PLANK LOOK) MANUFACT: ELDORADO STONE SERIES: VINTAGE RANCH COLOR: "SADDLEWOOD"</p>
<p>ALUMINUM STOREFRONT MANUFACT: KAWNEER COLOR: CLEAR ANODIZED</p>	<p>1" INSULATED GLAZING (U=0.29, SHGC= 0.28)</p>	

PHNX
DESIGN

COLOR MATERIAL BOARD
PAD 2

DUTCH BROS
Cafe



Findings

Staff is seeking your review and recommendation on the following:

- ✓ Proposed building and landscape architecture

Staff welcomes any feedback



Design Review Board