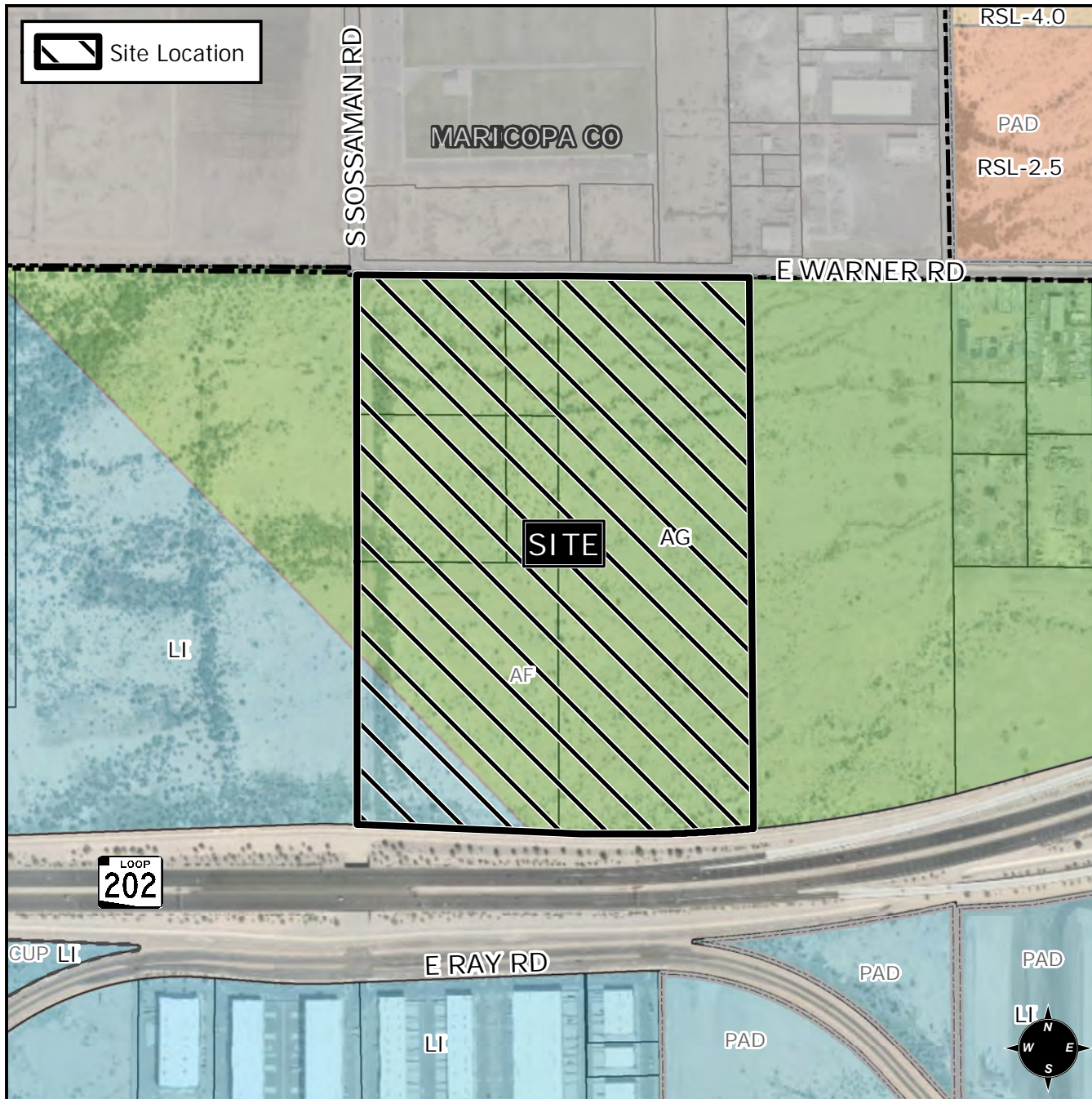


Planning and Zoning Vicinity Map: ZON21-00394

Case Details



CASE: ZON21-00394 PRE-PLAT :

SITE / ADDRESS:
 District 6. Within the 7600 to 7800 block of east Warner Road (south side) and within the 4400 to 4700 block of the South Sossaman Road alignment (east side). Located east of the Sossaman Road alignment on the south side of Warner Road. (101.7± acres).

REQUEST:
 Rezone from Light Industrial (LI) and Agricultural (AG) to Light Industrial with a Planned Area Development (LI-PAD) overlay; and Site Plan Review. This request will allow for the development of an industrial business park.

