



**1 NORTH BUILDING - NORTH ELEVATION**

**EXTERIOR MATERIAL DISTRIBUTION:**

A	B	C	D	STUCCO:	±66 %
J	K	GLAZING:	±23 %		
E	FIBER CEMENT WALL PANEL:	±0 %			
F	G	H	I	CMU:	±11 %



**2 NORTH BUILDING - EAST ELEVATION**

**EXTERIOR MATERIAL DISTRIBUTION:**

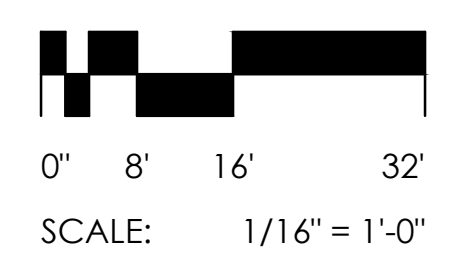
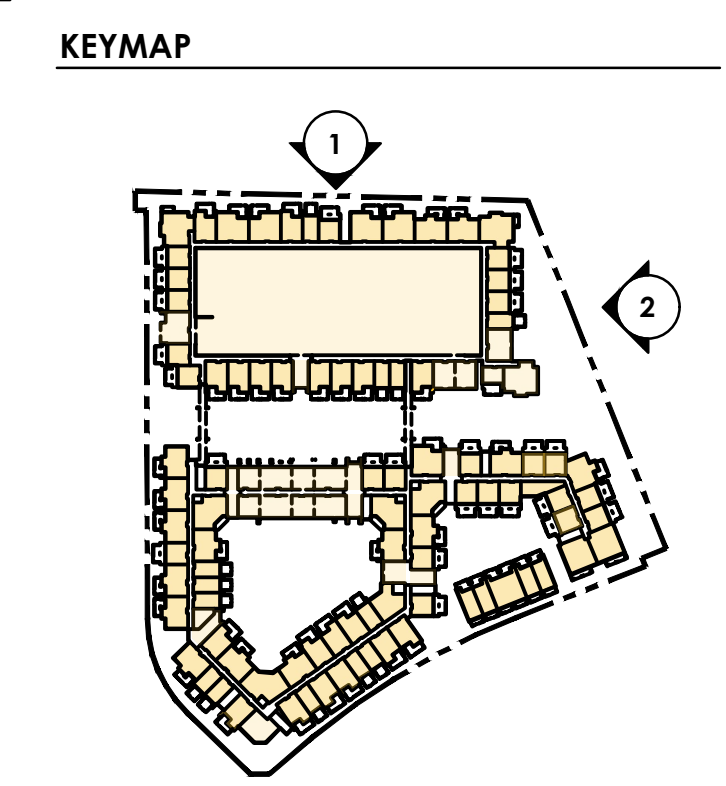
A	B	C	D	STUCCO:	±62 %
J	K	GLAZING:	±22 %		
E	FIBER CEMENT WALL PANEL:	±0 %			
F	G	H	I	CMU:	±15 %

**EXTERIOR MATERIALS**

A	STUCCO COLOR 1	DUNN EDWARDS - DEHW08 "CLASSIC WHITE"
B	STUCCO COLOR 2	DUNN EDWARDS - DE6374 "SILVER POLISH"
C	STUCCO COLOR 3	SHERWIN-WILLIAMS - SW6219 "RAIN"
D	STUCCO COLOR 4	DUNN EDWARDS - DE6378 "JET"
E	FIBER CEMENT WALL PANEL	EQUITONE [NATURA] - N972 OR EQUAL
F	CMU	ECHELON TRENDSTONE "DURANGO" 8X4X16 GROUND FACE
G	CMU	SUPERLITE - TRENDSTONE "OPAL" 2X8X16 VENEER CMU
H	DECORATIVE SCREEN	PAINTED TO MATCH B
I	CMU	3D BLOCK - OPAL
J	STOREFRONT	ARCADIA - "CLEAR ANODIZED"
K	VINYL WINDOWS	TBD - "BLACK VINYL"
L	EXTERIOR METALS	DUNN EDWARDS - DE6378 "JET"
M	SOFFIT PANEL	VOLTERRA - DOUG FIR "DARK WALNUT"

**OVERALL EXTERIOR MATERIAL DISTRIBUTION:**

A	B	C	D	STUCCO:	±56 %
J	K	GLAZING:	±22 %		
E	FIBER CEMENT WALL PANEL:	±4 %			
F	G	H	I	CMU / DECORATIVE SCREEN:	±18 %







**3 NORTH BUILDING - SOUTH ELEVATION**

**EXTERIOR MATERIAL DISTRIBUTION:**

A	B	C	D	STUCCO:	±61 %
J	K	GLAZING:	±23 %		
E	FIBER CEMENT WALL PANEL:	±0 %			
F	G	H	I	CMU:	±17 %



**4 NORTH BUILDING - WEST ELEVATION**

**EXTERIOR MATERIAL DISTRIBUTION:**

A	B	C	D	STUCCO:	±50 %
J	K	GLAZING:	±23 %		
E	FIBER CEMENT WALL PANEL:	±0 %			
F	G	H	I	CMU:	±27 %

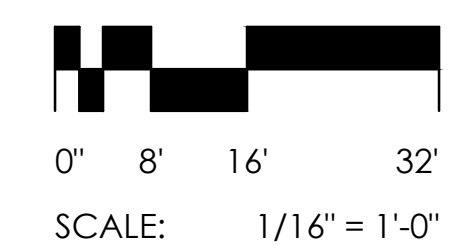
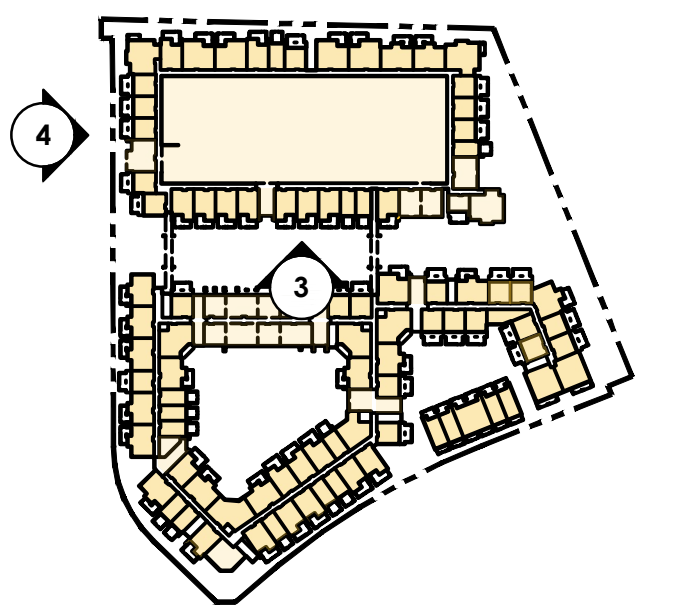
**EXTERIOR MATERIALS**

A	STUCCO COLOR 1	DUNN EDWARDS - DEHW08 "CLASSIC WHITE"
B	STUCCO COLOR 2	DUNN EDWARDS - DE6374 "SILVER POLISH"
C	STUCCO COLOR 3	SHERWIN-WILLIAMS - SW6219 "RAIN"
D	STUCCO COLOR 4	DUNN EDWARDS - DE6378 "JET"
E	FIBER CEMENT WALL PANEL	EQUITONE [NATURA] - N972 OR EQUAL
F	CMU	ECHELON TRENDSTONE "DURANGO" 8X4X16 GROUND FACE
G	CMU	SUPERLITE - TRENDSTONE "OPAL" 2X8X16 VENER CMU
H	DECORATIVE SCREEN	PAINTED TO MATCH B
I	CMU	3D BLOCK - OPAL
J	STOREFRONT	ARCADIA - "CLEAR ANODIZED"
K	VINYL WINDOWS	TBD - "BLACK VINYL"
L	EXTERIOR METALS	DUNN EDWARDS - DE6378 "JET"
M	SOFFIT PANEL	VOLTERRA - DOUG FIR "DARK WALNUT"

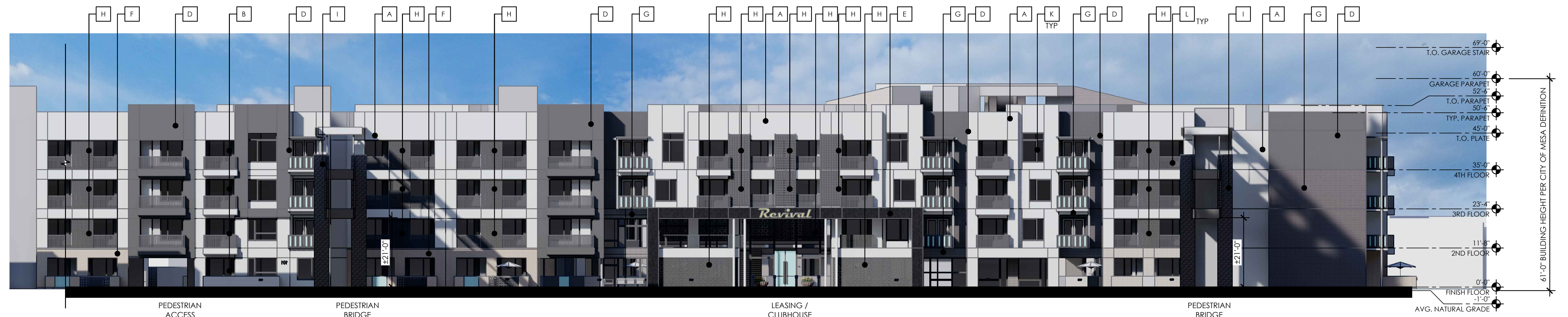
**OVERALL EXTERIOR MATERIAL DISTRIBUTION:**

A	B	C	D	STUCCO:	±56 %
J	K	GLAZING:	±22 %		
E	FIBER CEMENT WALL PANEL:	±4 %			
F	G	H	I	CMU / DECORATIVE SCREEN:	±18 %

**KEYMAP**







**5 SOUTH BUILDING - NORTH ELEVATION**

**EXTERIOR MATERIAL DISTRIBUTION:**

A	B	C	D	STUCCO:	±47 %
J	K	GLAZING:	±24 %		
E	FIBER CEMENT WALL PANEL:	±2 %			
F	G	H	I	CMU:	±27 %



**6 SOUTH BUILDING - EAST ELEVATION**

**EXTERIOR MATERIAL DISTRIBUTION:**

A	B	C	D	STUCCO:	±50 %
J	K	GLAZING:	±16 %		
E	FIBER CEMENT WALL PANEL:	±14 %			
F	G	H	I	CMU:	±20 %

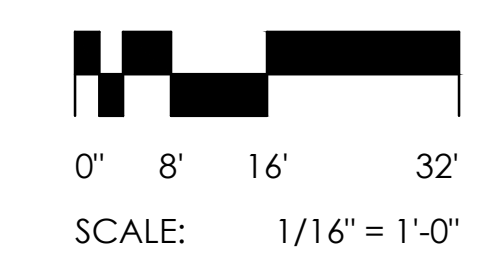
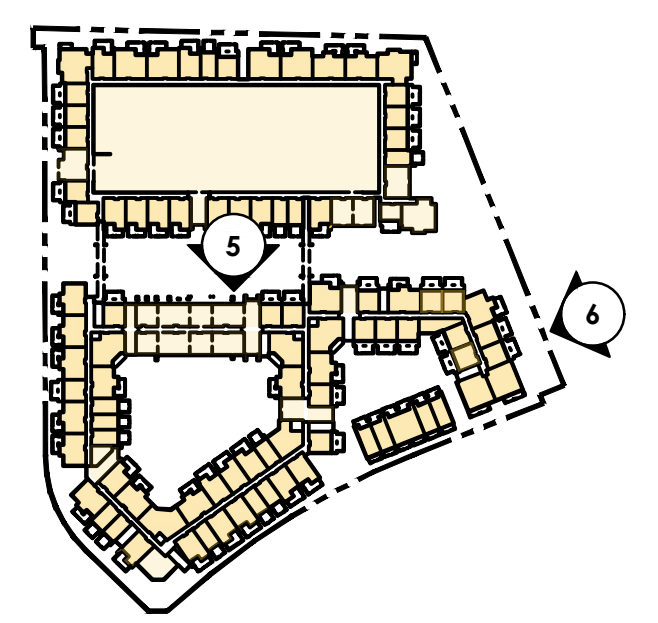
**EXTERIOR MATERIALS**

A	STUCCO COLOR 1	DUNN EDWARDS - DEHW08 "CLASSIC WHITE"
B	STUCCO COLOR 2	DUNN EDWARDS - DE6374 "SILVER POLISH"
C	STUCCO COLOR 3	SHERWIN-WILLIAMS - SW6219 "RAIN"
D	STUCCO COLOR 4	DUNN EDWARDS - DE6378 "JET"
E	FIBER CEMENT WALL PANEL	EQUITONE [NATURA] - N972 OR EQUAL
F	CMU	ECHELON TRENDSSTONE "DURANGO" 8X4X16 GROUND FACE
G	CMU	SUPERLITE - TRENDSSTONE "OPAL" 2X8X16 VENERER CMU
H	DECORATIVE SCREEN	PAINTED TO MATCH B
I	CMU	3D BLOCK - OPAL
J	STOREFRONT	ARCADIA - "CLEAR ANODIZED"
K	VINYL WINDOWS	TBD - "BLACK VINYL"
L	EXTERIOR METALS	DUNN EDWARDS - DE6378 "JET"
M	SOFFIT PANEL	VOLTERRA - DOUG FIR "DARK WALNUT"

**OVERALL EXTERIOR MATERIAL DISTRIBUTION:**

A	B	C	D	STUCCO:	±56 %
J	K	GLAZING:	±22 %		
E	FIBER CEMENT WALL PANEL:	±4 %			
F	G	H	I	CMU / DECORATIVE SCREEN:	±18 %

**KEYMAP**



**RESIDENCES AT DOBSON ROAD AND CUBS WAY**  
 MESA, ARIZONA  
 GPA/REZONING/SITE PLAN 3RD SUBMITTAL  
 MARCH 13, 2023  
 (REVISED APRIL 7, 2023)

**EXTERIOR COLOR ELEVATIONS**  
 Preliminary Not For Construction

**A3.2.3**





**7 SOUTH BUILDING - SOUTH ELEVATION EAST**

**EXTERIOR MATERIAL DISTRIBUTION:**

A	B	C	D	STUCCO:	±34 %
J	K	GLAZING:	±23 %		
E	FIBER CEMENT WALL PANEL:	±43 %			
F	G	H	I	CMU:	±0 %



**8 SOUTH BUILDING - SOUTH ELEVATION WEST**

**EXTERIOR MATERIAL DISTRIBUTION:**

A	B	C	D	STUCCO:	±61 %
J	K	GLAZING:	±21 %		
E	FIBER CEMENT WALL PANEL:	±5 %			
F	G	H	I	CMU:	±14 %

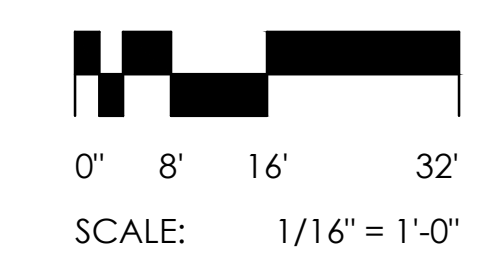
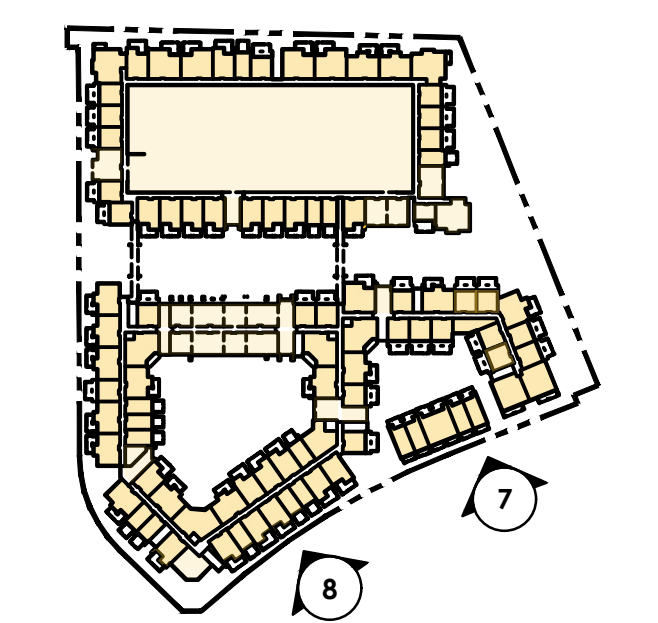
**EXTERIOR MATERIALS**

A	STUCCO COLOR 1	DUNN EDWARDS - DEHW08 "CLASSIC WHITE"
B	STUCCO COLOR 2	DUNN EDWARDS - DE6374 "SILVER POLISH"
C	STUCCO COLOR 3	SHERWIN-WILLIAMS - SW6219 "RAIN"
D	STUCCO COLOR 4	DUNN EDWARDS - DE6378 "JET"
E	FIBER CEMENT WALL PANEL	EQUITONE [NATURA] - N972 OR EQUAL
F	CMU	ECHELON TRENDSTONE "DURANGO" 8X4X16 GROUND FACE
G	CMU	SUPERLITE - TRENDSTONE "OPAL" 2X8X16 VENEER CMU
H	DECORATIVE SCREEN	PAINTED TO MATCH B
I	CMU	3D BLOCK - OPAL
J	STOREFRONT	ARCADIA - "CLEAR ANODIZED"
K	VINYL WINDOWS	TBD - "BLACK VINYL"
L	EXTERIOR METALS	DUNN EDWARDS - DE6378 "JET"
M	SOFFIT PANEL	VOLTERRA - DOUG FIR "DARK WALNUT"

**OVERALL EXTERIOR MATERIAL DISTRIBUTION:**

A	B	C	D	STUCCO:	±56 %
J	K	GLAZING:	±22 %		
E	FIBER CEMENT WALL PANEL:	±4 %			
F	G	H	I	CMU / DECORATIVE SCREEN:	±18 %

**KEYMAP**



**RESIDENCES AT DOBSON ROAD AND CUBS WAY**  
 MESA, ARIZONA  
 GPA/REZONING/SITE PLAN 3RD SUBMITTAL  
 MARCH 13, 2023  
 (REVISED APRIL 7, 2023)

**EXTERIOR COLOR ELEVATIONS**  
 Preliminary Not For Construction

**A3.2.4**

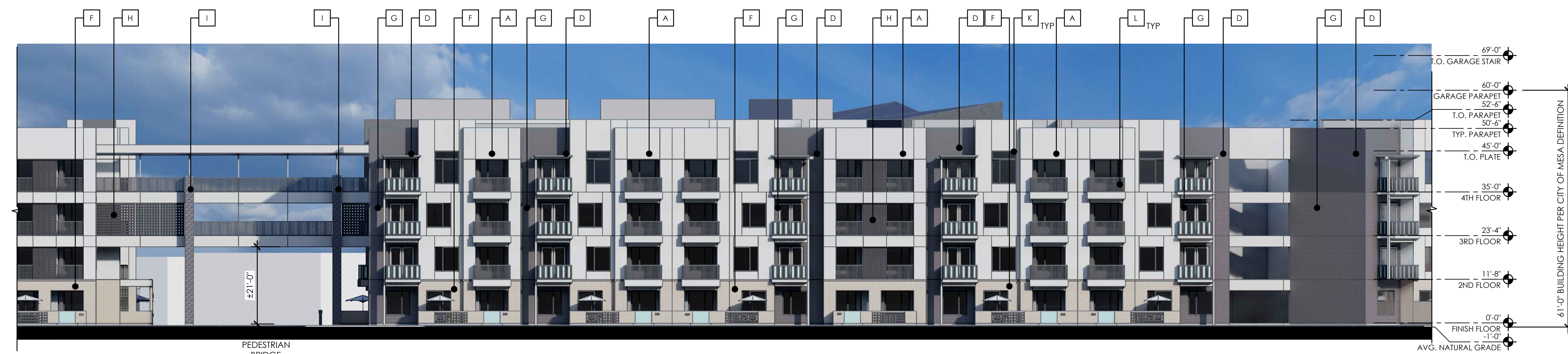




**9 SOUTH BUILDING - SOUTHWEST ELEVATION**

**EXTERIOR MATERIAL DISTRIBUTION:**

A	B	C	D	STUCCO:	±53 %
J	K	GLAZING:	±20 %		
E	FIBER CEMENT WALL PANEL:	±6 %			
F	G	H	I	CMU:	±21 %



**10 SOUTH BUILDING - WEST ELEVATION**

**EXTERIOR MATERIAL DISTRIBUTION:**

A	B	C	D	STUCCO:	±49 %
J	K	GLAZING:	±21 %		
E	FIBER CEMENT WALL PANEL:	±0 %			
F	G	H	I	CMU:	±30 %

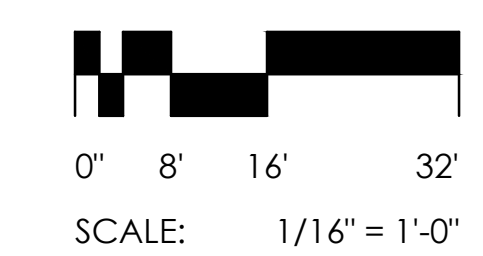
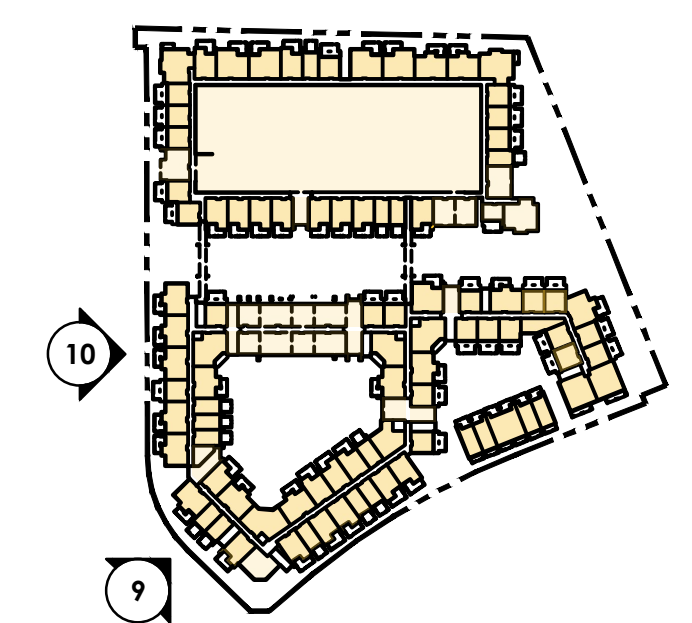
**EXTERIOR MATERIALS**

A	STUCCO COLOR 1	DUNN EDWARDS - DEHW08 "CLASSIC WHITE"
B	STUCCO COLOR 2	DUNN EDWARDS - DE6374 "SILVER POLISH"
C	STUCCO COLOR 3	SHERWIN-WILLIAMS - SW6219 "RAIN"
D	STUCCO COLOR 4	DUNN EDWARDS - DE6378 "JET"
E	FIBER CEMENT WALL PANEL	EQUITONE [NATURA] - N972 OR EQUAL
F	CMU	ECHELON TRENDSTONE "DURANGO" 8X4X16 GROUND FACE
G	CMU	SUPERLITE - TRENDSTONE "OPAL" 2X8X16 VENEER CMU
H	DECORATIVE SCREEN	PAINTED TO MATCH B
I	CMU	3D BLOCK - OPAL
J	STOREFRONT	ARCADIA - "CLEAR ANODIZED"
K	VINYL WINDOWS	TBD - "BLACK VINYL"
L	EXTERIOR METALS	DUNN EDWARDS - DE6378 "JET"
M	SOFFIT PANEL	VOLTERRA - DOUG FIR "DARK WALNUT"

**OVERALL EXTERIOR MATERIAL DISTRIBUTION:**

A	B	C	D	STUCCO:	±56 %
J	K	GLAZING:	±22 %		
E	FIBER CEMENT WALL PANEL:	±4 %			
F	G	H	I	CMU / DECORATIVE SCREEN:	±18 %

**KEYMAP**



**RESIDENCES AT DOBSON ROAD AND CUBS WAY**  
 MESA, ARIZONA  
 GPA/REZONING/SITE PLAN 3RD SUBMITTAL  
 MARCH 13, 2023  
 (REVISED APRIL 7, 2023)

EXTERIOR COLOR ELEVATIONS  
 Preliminary Not For Construction

**A3.2.5**